

# Anti-Lysyl oxidase like 2 Recombinant Rabbit Monoclonal Antibody



**Catalog #: 4378**

## Aliases

LOXL2; Lysyl Oxidase Like 2; WS9-14; LOR; Lysyl Oxidase-Related Protein WS9-14; Lysyl Oxidase-Related Protein 2; Lysyl Oxidase-Like Protein 2; Lysyl Oxidase Homolog 2; Lysyl Oxidase-Like 2 Delta E13; Lysyl Oxidase-Like 2 Protein; Lysyl Oxidase Related 2; Lysyl Oxidase-Like 2; EC 1.4.3.13; EC 1.4.3; LOR2

## Background

Gene Name: LOXL2

NCBI Gene Entry: [4017](#)

UniProt Entry: [Q9Y4K0](#)

## Application Information

Molecular Weight: Predicted, 87 kDa; observed, 53;106 kDa

Clonality: Rabbit monoclonal antibody

Clone ID: 24GB10920

Species Reactivity: Human, mouse, rat

Applications Tested: Western blotting (WB), immunocytochemistry (IC), flow cytometry (FCM)

## Immunogen

A synthesized peptide derived from human LOXL2

## Isotype

Rabbit IgG

## Storage Buffer

Supplied in PBS (pH 7.4) containing 50% glycerol, and 0.02% sodium azide.

## Storage

Store at -20 °C for one year.

## Recommended Dilutions

Western Blotting (WB): 1:1,000-1:5,000

Immunocytochemistry (IC): 1:100-1:1,000

Flow Cytometry (FCM): 1:2,000

---

### SUPPORT

SUPPORT@GENUINBIOTECH.COM  
TEL: +1-540-855-7041

### ORDERS

SALES@GENUINBIOTECH.COM  
FAX: +1-540-855-7041

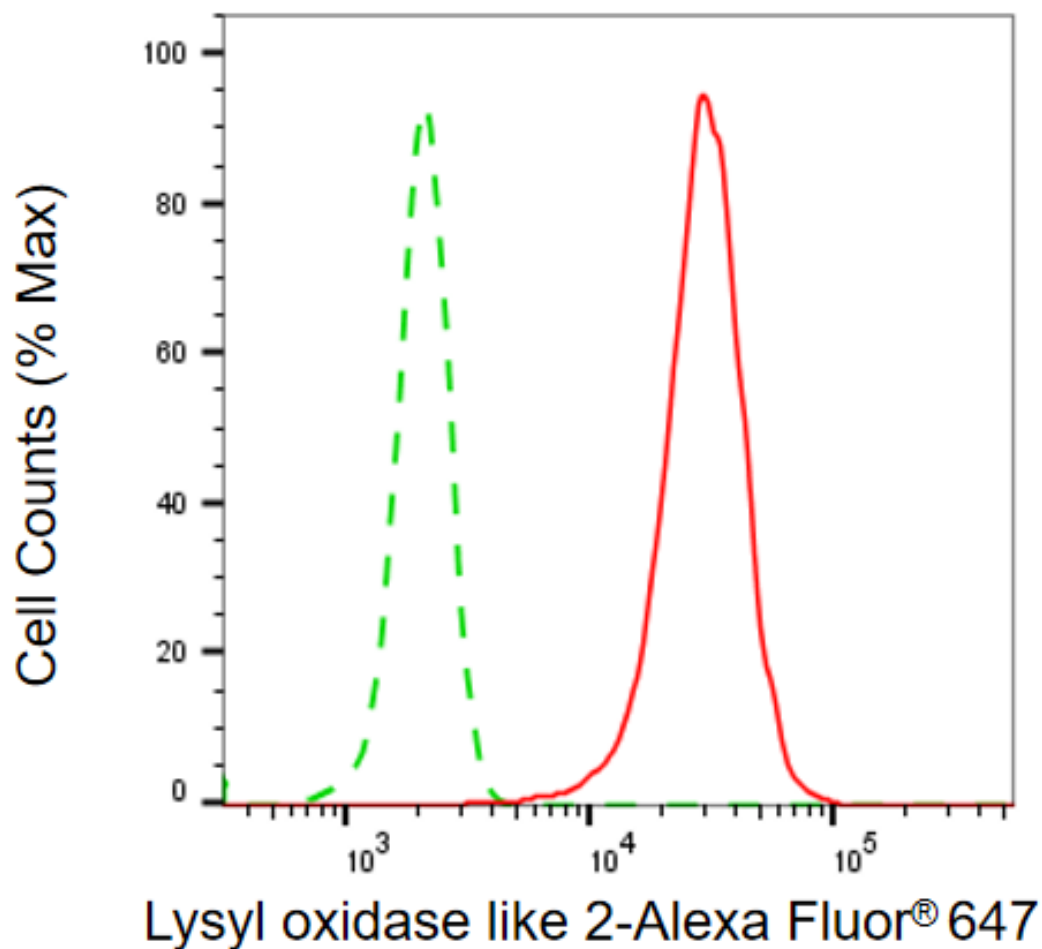
[WWW.GENUINBIOTECH.COM](http://WWW.GENUINBIOTECH.COM)

# Anti-Lysyl oxidase like 2 Recombinant Rabbit Monoclonal Antibody

PAGE 2

**Note:** This product is for research use only.

## Validation Data



Flow cytometric analysis of Lysyl oxidase like 2 expression in HepG2 cells using anti-Lysyl oxidase like 2 antibody (Cat#4378, 1:2,000). Green, isotype control; red, Lysyl oxidase like 2.

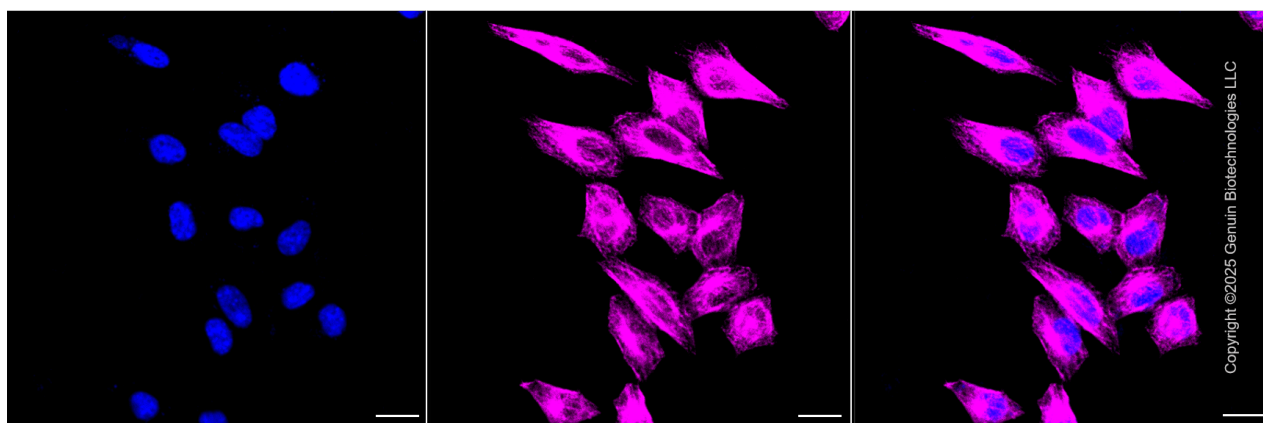
### SUPPORT

SUPPORT@GENUINBIOTECH.COM  
TEL: +1-540-855-7041

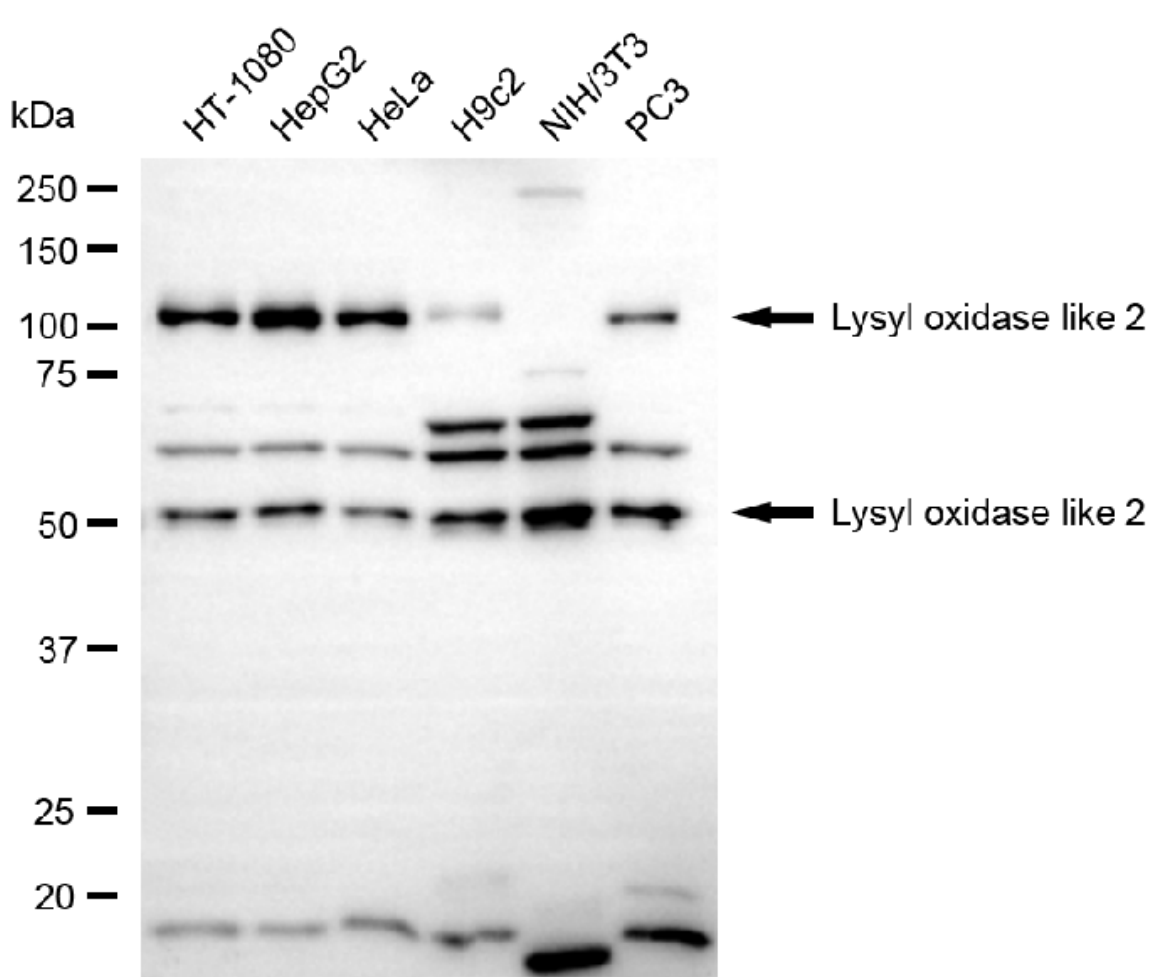
### ORDERS

SALES@GENUINBIOTECH.COM  
FAX: +1-540-855-7041

WWW.GENUINBIOTECH.COM



Immunocytochemical staining of HepG2 cells with anti-Lysyl oxidase like 2 antibody (Cat#4378, 1:1,000) . Nuclei were stained blue with DAPI; Lysyl oxidase like 2 was stained magenta with Alexa Fluor® 647. Images were taken using Leica stellaris 5. Protein abundance based on laser Intensity and smart gain: Medium. Scale bar, 20 µm.



Western blotting analysis using anti-lysyl oxidase like 2 antibody (Cat#4378). Total cell lysates (30 µg) from various cell lines were loaded and separated by SDS-PAGE. The blot was incubated

## **Anti-Lysyl oxidase like 2 Recombinant Rabbit Monoclonal Antibody**

PAGE 4

with anti-lysyl oxidase like 2 antibody (Cat#4378, 1:5,000) and HRP-conjugated goat anti-rabbit secondary antibody (Cat#201, 1:20,000) respectively. Image was developed using FeQ™ ECL Substrate Kit (Cat#226).

---

### **SUPPORT**

SUPPORT@GENUINBIOTECH.COM  
TEL: +1-540-855-7041

### **ORDERS**

SALES@GENUINBIOTECH.COM  
FAX: +1-540-855-7041

**WWW.GENUINBIOTECH.COM**