

# Anti-Ubiquitin specific peptidase 13 Recombinant Rabbit Monoclonal Antibody



**Catalog #: 4382**

## Aliases

USP13; Ubiquitin Specific Peptidase 13; Ubiquitin Specific Protease 13 (Isopeptidase T-3); Ubiquitin-Specific-Processing Protease 13; Ubiquitin Carboxyl-Terminal Hydrolase 13; Deubiquitinating Enzyme 13; Ubiquitin Thioesterase 13; Isopeptidase T-3; IsoT-3; ISOT-3; ISOT3; Ubiquitin Specific Peptidase 13 (Isopeptidase T-3); Ubiquitin Thiolesterase 13; EC 3.4.19.12; EC 3.1.2.15

## Background

Gene Name: USP13

NCBI Gene Entry: [8975](#)

UniProt Entry: [Q92995](#)

## Application Information

Molecular Weight: Predicted, 97 kDa; observed, 97 kDa

Clonality: Rabbit monoclonal antibody

Clone ID: 24GB10940

Species Reactivity: Human, mouse, rat

Applications Tested: Western blotting (WB), flow cytometry (FCM), immunocytochemistry (IC)

## Immunogen

A synthesized peptide derived from human USP13

## Isotype

Rabbit IgG

## Storage Buffer

Supplied in PBS (pH 7.4) containing 50% glycerol, and 0.02% sodium azide.

## Storage

Store at -20 °C for one year.

## Recommended Dilutions

Western Blotting (WB): 1:1,000-1:5,000

Flow Cytometry (FCM): 1:2,000

Immunocytochemistry (IC): 1:100-1:1,000

---

### SUPPORT

SUPPORT@GENUINBIOTECH.COM  
TEL: +1-540-855-7041

### ORDERS

SALES@GENUINBIOTECH.COM  
FAX: +1-540-855-7041

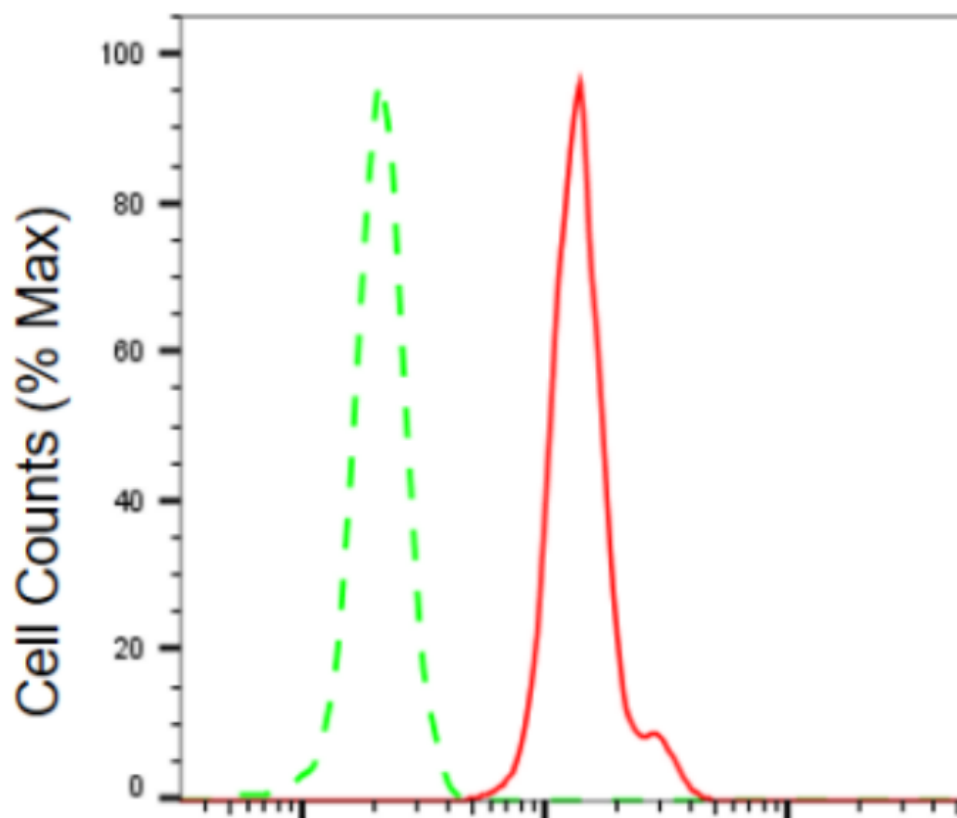
[WWW.GENUINBIOTECH.COM](http://WWW.GENUINBIOTECH.COM)

# Anti-Ubiquitin specific peptidase 13 Recombinant Rabbit Monoclonal Antibody

PAGE 2

**Note:** This product is for research use only.

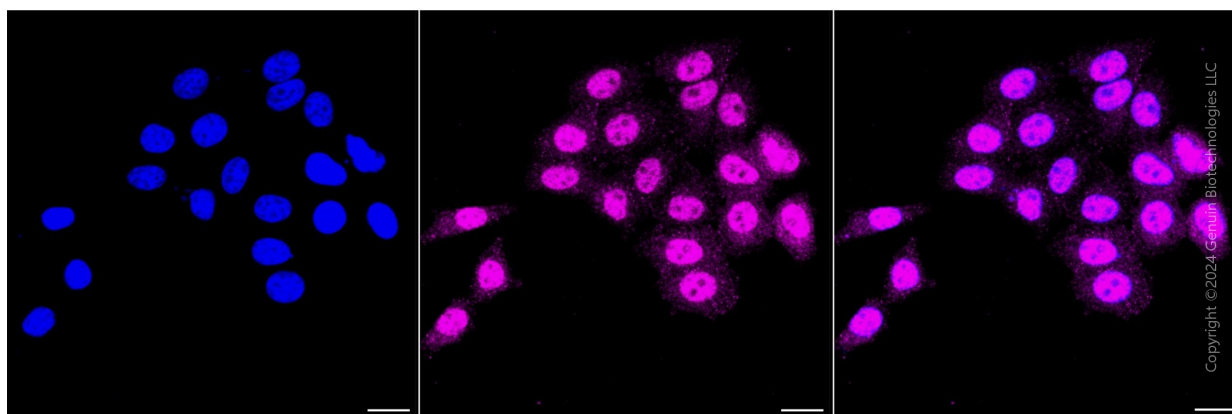
## Validation Data



Copyright ©2024 Genuin Biotechnologies LLC

## Ubiquitin specific peptidase 13-Alexa Fluor® 647

Flow cytometric analysis of ubiquitin specific peptidase 13 expression in HepG2 cells using anti-ubiquitin specific peptidase 13 antibody (Cat#4382, 1:2,000). Green, isotype control; red, ubiquitin specific peptidase 13.



Copyright ©2024 Genuin Biotechnologies LLC

### SUPPORT

SUPPORT@GENUINBIOTECH.COM  
TEL: +1-540-855-7041

### ORDERS

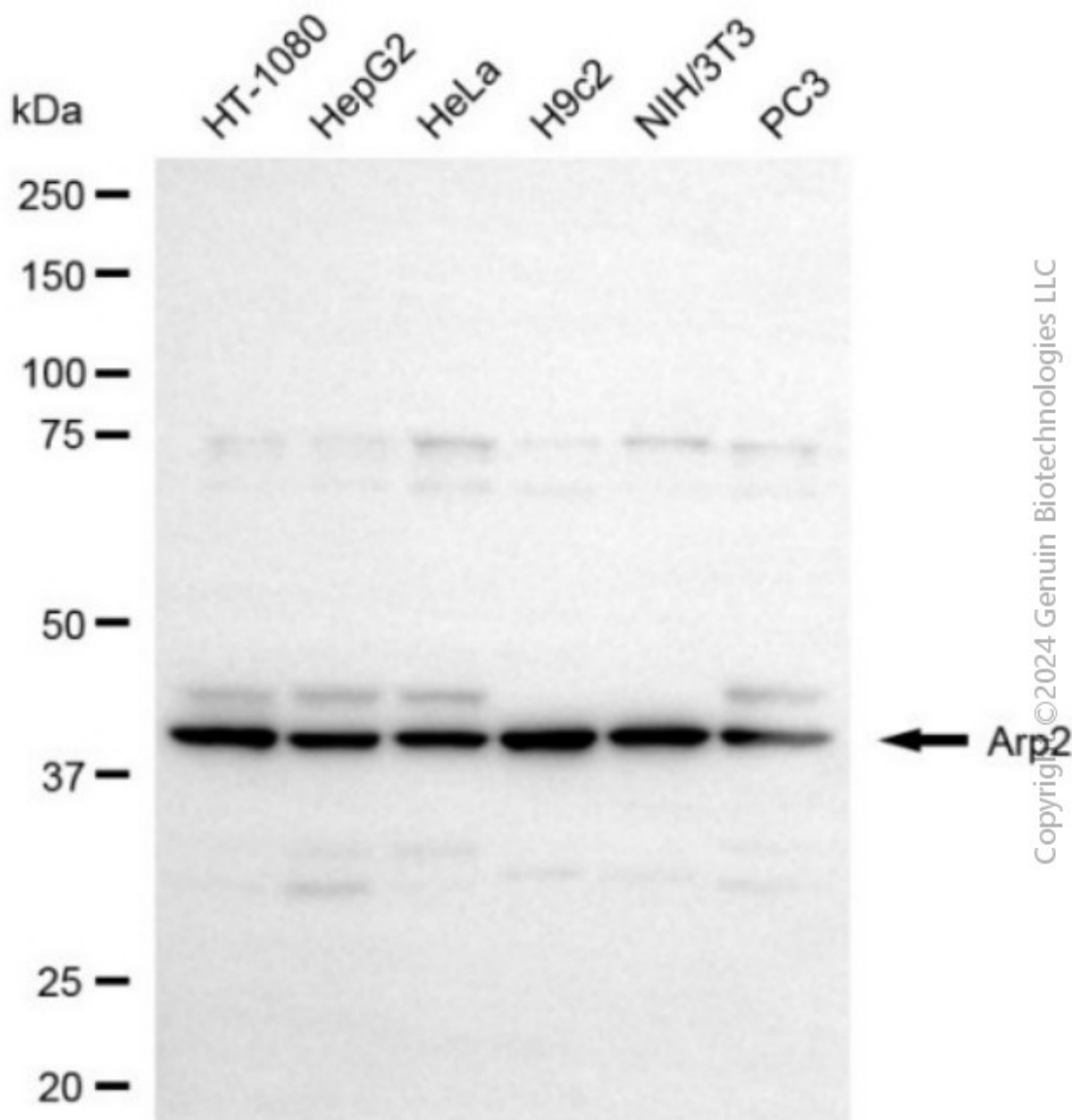
SALES@GENUINBIOTECH.COM  
FAX: +1-540-855-7041

WWW.GENUINBIOTECH.COM

## Anti-Ubiquitin specific peptidase 13 Recombinant Rabbit Monoclonal Antibody

PAGE 3

Immunocytochemical staining of HepG2 cells with anti-Ubiquitin specific peptidase 13 antibody (Cat#4382, 1:1,000). Nuclei were stained blue with DAPI; Ubiquitin specific peptidase 13 was stained magenta with Alexa Fluor® 647. Images were taken using Leica stellaris 5. Protein abundance based on laser Intensity and smart gain: Medium. Scale bar, 20 µm.



Western blotting analysis using anti-ubiquitin specific peptidase 13 antibody (Cat#4382). Total cell lysates (30 µg) from various cell lines were loaded and separated by SDS-PAGE. The blot was incubated with anti-ubiquitin specific peptidase 13 antibody (Cat#4382, 1:5,000) and HRP-conjugated goat anti-rabbit secondary antibody (Cat#201, 1:20,000) respectively. Image was developed using FeQ™ ECL Substrate Kit (Cat#226).

### SUPPORT

SUPPORT@GENUINBIOTECH.COM  
TEL: +1-540-855-7041

### ORDERS

SALES@GENUINBIOTECH.COM  
FAX: +1-540-855-7041

WWW.GENUINBIOTECH.COM

**Anti-Ubiquitin specific peptidase 13**  
**Recombinant Rabbit Monoclonal Antibody**

PAGE 4

---

**SUPPORT**

SUPPORT@GENUINBIOTECH.COM  
TEL: +1-540-855-7041

**ORDERS**

SALES@GENUINBIOTECH.COM  
FAX: +1-540-855-7041

**WWW.GENUINBIOTECH.COM**