

Anti-Glutamic-oxaloacetic transaminase 1 Recombinant Rabbit Monoclonal Antibody



Catalog #: 4383

Aliases

GOT1; Glutamic-Oxaloacetic Transaminase 1; Glutamate Oxaloacetate Transaminase 1; AST1; SGOT; AST; Glutamic-Oxaloacetic Transaminase 1, Soluble; Aspartate Aminotransferase, Cytoplasmic; Cysteine Aminotransferase, Cytoplasmic; Cysteine Transaminase, Cytoplasmic; Aspartate Aminotransferase 1; Aspartate Transaminase 1; Transaminase A; EC 2.6.1.1; CAspAT; CCAT; Glutamic-Oxaloacetic Transaminase 1, Soluble (Aspartate Aminotransferase 1); Testis Secretory Sperm-Binding Protein Li 196a; Growth-Inhibiting Protein 18; EC 2.6.1.3; ASTQTL1; GIG18

Background

Gene Name: GOT1

NCBI Gene Entry: [2805](#)

UniProt Entry: [P17174](#)

Application Information

Molecular Weight: Predicted, 46 kDa; observed, 47 kDa

Clonality: Rabbit monoclonal antibody

Clone ID: 24GB10945

Species Reactivity: Human, mouse, rat

Applications Tested: Western blotting (WB), flow cytometry (FCM), immunocytochemistry (IC)

Immunogen

A synthesized peptide derived from human Aspartate Aminotransferase

Isotype

Rabbit IgG

Storage Buffer

Supplied in PBS (pH 7.4) containing 50% glycerol, and 0.02% sodium azide.

Storage

Store at -20 °C for one year.

Recommended Dilutions

Western Blotting (WB): 1:1,000-1:5,000

Flow Cytometry (FCM): 1:2,000

SUPPORT

SUPPORT@GENUINBIOTECH.COM
TEL: +1-540-855-7041

ORDERS

SALES@GENUINBIOTECH.COM
FAX: +1-540-855-7041

WWW.GENUINBIOTECH.COM

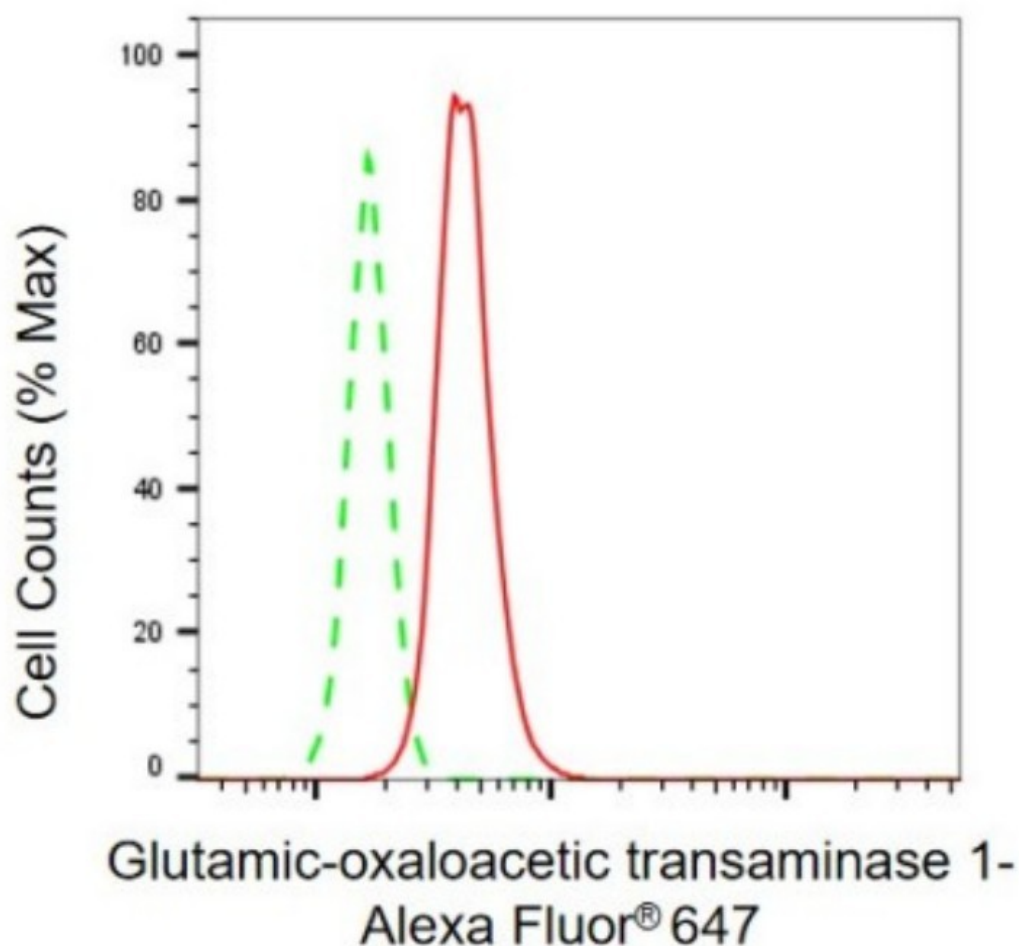
Anti-Glutamic-oxaloacetic transaminase 1 Recombinant Rabbit Monoclonal Antibody

PAGE 2

Immunocytochemistry (IC): 1:100-1:1,000

Note: This product is for research use only.

Validation Data



Copyright ©2024 Genuin Biotechnologies LLC

Flow cytometric analysis of glutamic-oxaloacetic transaminase 1 expression in C2C12 cells using anti-glutamic-oxaloacetic transaminase 1 antibody (Cat#4383, 1:2,000). Green, isotype control; red, glutamic-oxaloacetic transaminase 1.

SUPPORT

SUPPORT@GENUINBIOTECH.COM
TEL: +1-540-855-7041

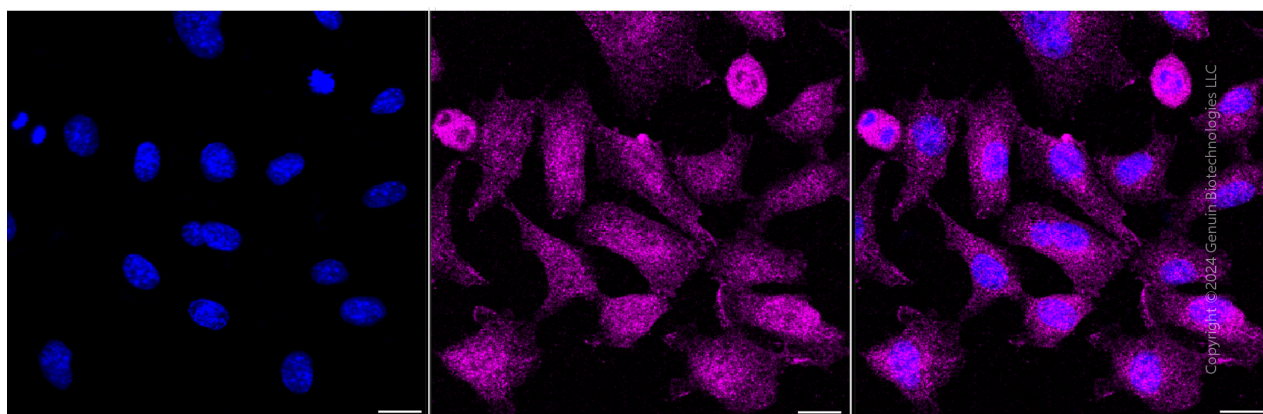
ORDERS

SALES@GENUINBIOTECH.COM
FAX: +1-540-855-7041

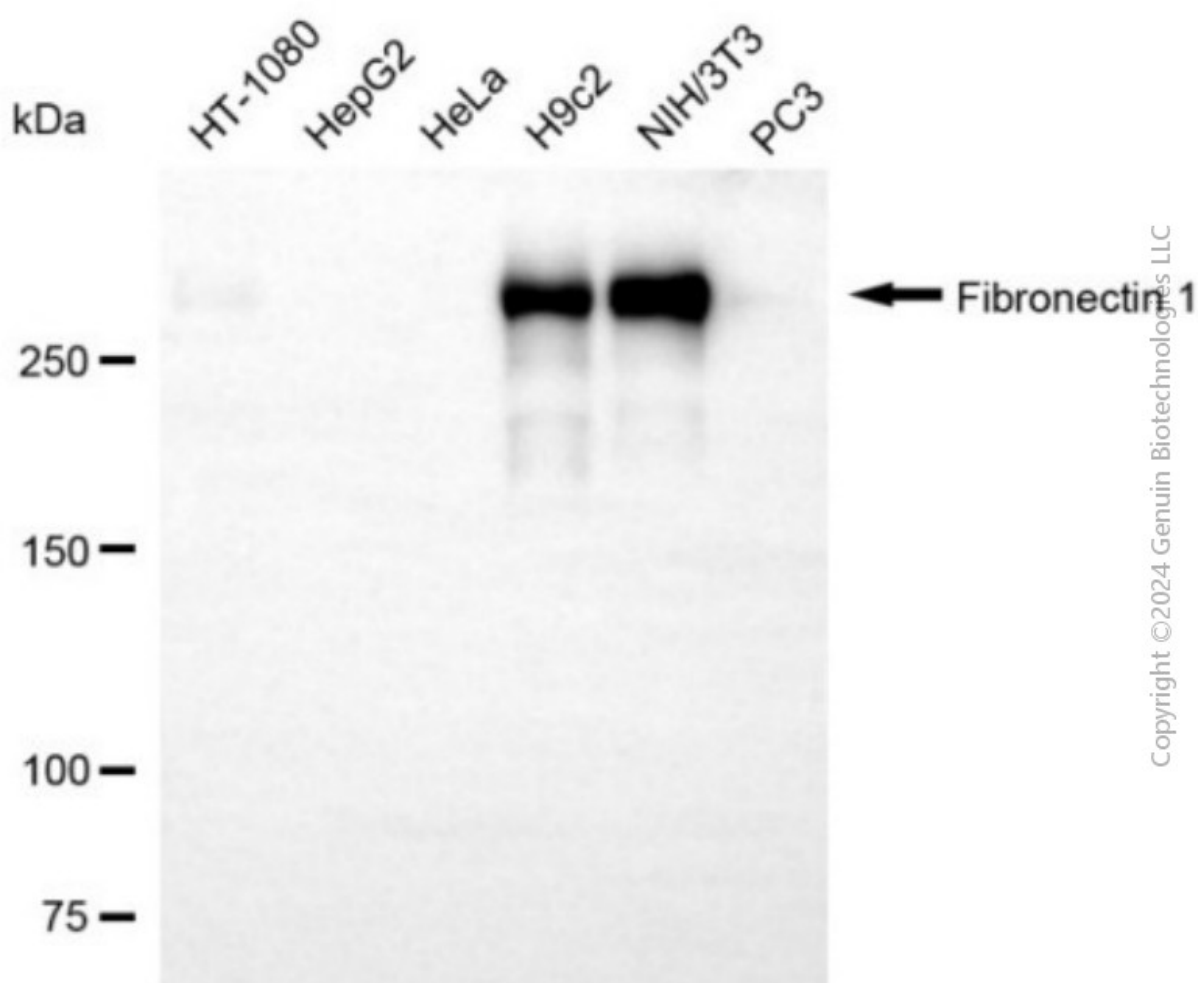
WWW.GENUINBIOTECH.COM

Anti-Glutamic-oxaloacetic transaminase 1 Recombinant Rabbit Monoclonal Antibody

PAGE 3



Immunocytochemical staining of C2C12 cells with anti-Glutamic-oxaloacetic transaminase 1 antibody (Cat#4383, 1:1,000). Nuclei were stained blue with DAPI; Glutamic-oxaloacetic transaminase 1 was stained magenta with Alexa Fluor® 647. Images were taken using Leica stellaris 5. Protein abundance based on laser Intensity and smart gain: Low. Scale bar, 20 μ m.



SUPPORT

SUPPORT@GENUINBIOTECH.COM
TEL: +1-540-855-7041

ORDERS

SALES@GENUINBIOTECH.COM
FAX: +1-540-855-7041

WWW.GENUINBIOTECH.COM

Anti-Glutamic-oxaloacetic transaminase 1 Recombinant Rabbit Monoclonal Antibody

PAGE 4

Western blotting analysis using anti-glutamic-oxaloacetic transaminase 1 antibody (Cat#4383). Total cell lysates (30 µg) from various cell lines were loaded and separated by SDS-PAGE. The blot was incubated with anti-glutamic-oxaloacetic transaminase 1 antibody (Cat#4383, 1:5,000) and HRP-conjugated goat anti-rabbit secondary antibody (Cat#201, 1:20,000) respectively. Image was developed using NaQ™ ECL Substrate Kit (Cat#716).

SUPPORT

SUPPORT@GENUINBIOTECH.COM
TEL: +1-540-855-7041

ORDERS

SALES@GENUINBIOTECH.COM
FAX: +1-540-855-7041

WWW.GENUINBIOTECH.COM