

# Anti-PAK2 Recombinant Rabbit Monoclonal Antibody



**Catalog #: 4385**

## Aliases

PAK2; P21 (RAC1) Activated Kinase 2; PAK65; S6/H4 Kinase; P21 Protein (Cdc42/Rac)-Activated Kinase 2; Serine/Threonine-Protein Kinase PAK 2; P21 (CDKN1A)-Activated Kinase 2; P21-Activated Kinase 2; EC 2.7.11.1; Gamma-PAK; PAKgamma; PAK-2; P58; EC 2.7.11; PAKGAMMA; KNO2

## Background

Gene Name: PAK2

NCBI Gene Entry: [5062](#)

UniProt Entry: [Q13177](#)

## Application Information

Molecular Weight: Predicted, 58 kDa; observed, 61 kDa

Clonality: Rabbit monoclonal antibody

Clone ID: 24GB10955

Species Reactivity: Human, mouse, rat

Applications Tested: Western blotting (WB), flow cytometry (FCM), immunocytochemistry (IC)

## Immunogen

A synthesized peptide derived from human PAK2

## Isotype

Rabbit IgG

## Storage Buffer

Supplied in PBS (pH 7.4) containing 50% glycerol, and 0.02% sodium azide.

## Storage

Store at -20 °C for one year.

## Recommended Dilutions

Western Blotting (WB): 1:1,000-1:5,000

Flow Cytometry (FCM): 1:2,000

Immunocytochemistry (IC): 1:100-1:1,000

---

### SUPPORT

SUPPORT@GENUINBIOTECH.COM  
TEL: +1-540-855-7041

### ORDERS

SALES@GENUINBIOTECH.COM  
FAX: +1-540-855-7041

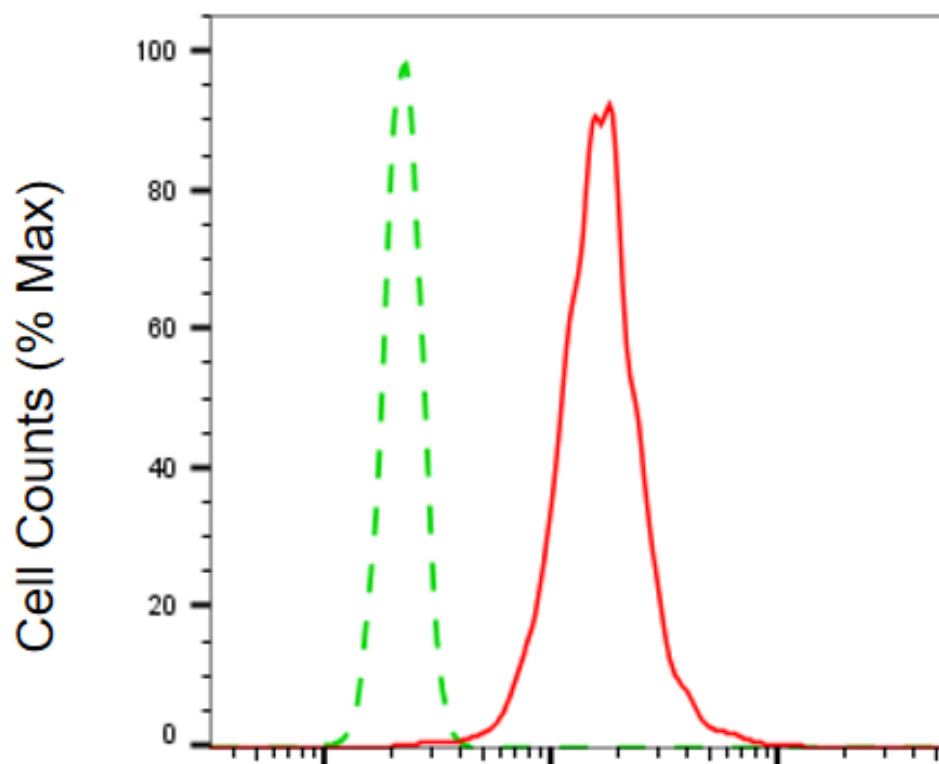
[WWW.GENUINBIOTECH.COM](http://WWW.GENUINBIOTECH.COM)

# Anti-PAK2 Recombinant Rabbit Monoclonal Antibody

PAGE 2

**Note:** This product is for research use only.

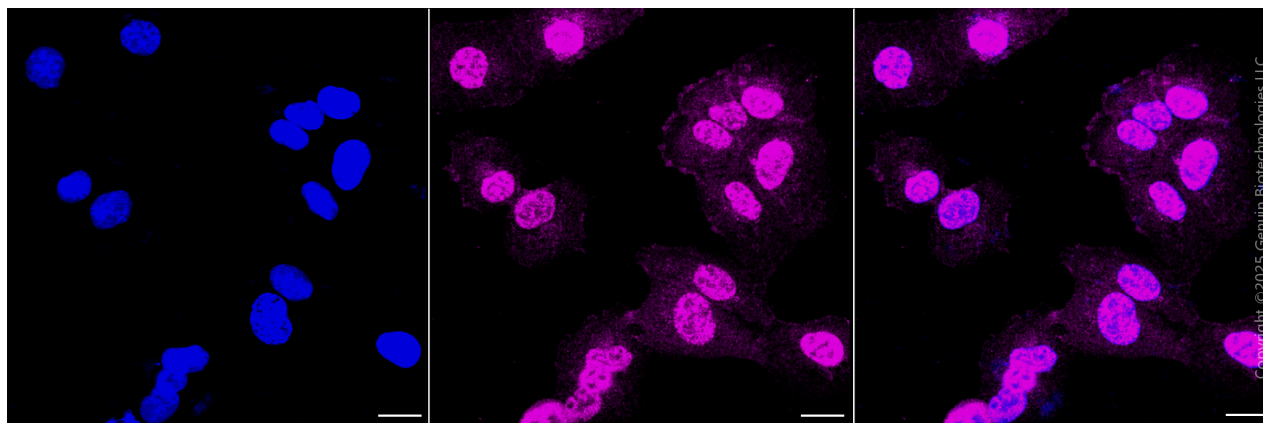
## Validation Data



Copyright ©2025 Genuin Biotechnologies LLC

PAK2-Alexa Fluor® 647

Flow cytometric analysis of PAK2 expression in HT-1080 cells using anti-PAK2 antibody (Cat#4385, 1:2,000). Green, isotype control; red, PAK2.



Copyright ©2025 Genuin Biotechnologies LLC

Immunocytochemical staining of HT-1080 cells with anti-PAK2 antibody (Cat#4385, 1:1,000).

### SUPPORT

SUPPORT@GENUINBIOTECH.COM  
TEL: +1-540-855-7041

### ORDERS

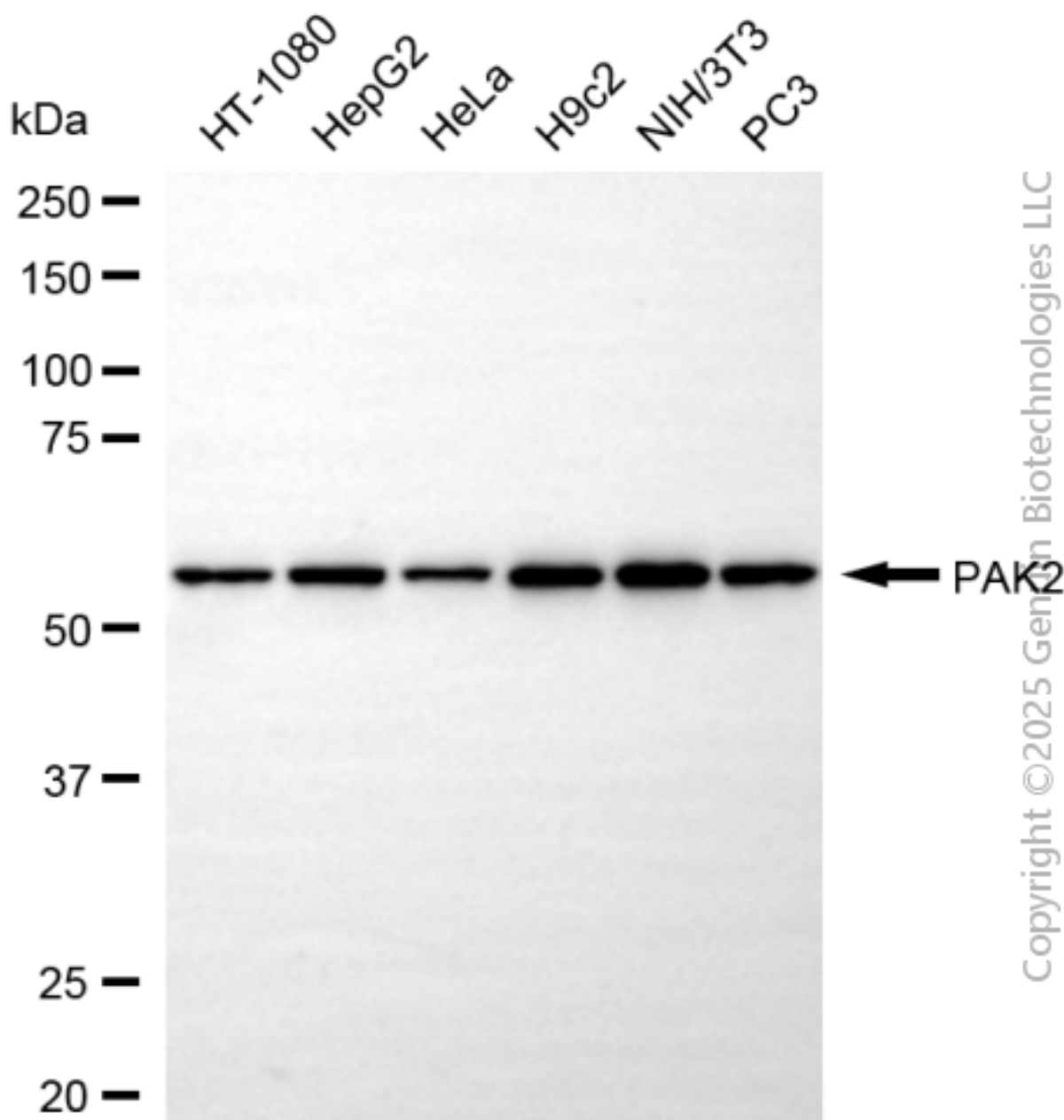
SALES@GENUINBIOTECH.COM  
FAX: +1-540-855-7041

WWW.GENUINBIOTECH.COM

## Anti-PAK2 Recombinant Rabbit Monoclonal Antibody

PAGE 3

Nuclei were stained blue with DAPI; PAK2 was stained magenta with Alexa Fluor® 647. Images were taken using Leica stellaris 5. Protein abundance based on laser Intensity and smart gain: High. Scale bar, 20 µm.



Western blotting analysis using anti-PAK2 antibody (Cat#4385). Total cell lysates (30 µg) from various cell lines were loaded and separated by SDS-PAGE. The blot was incubated with anti-PAK2 antibody (Cat#4385, 1:5,000) and HRP-conjugated goat anti-rabbit secondary antibody (Cat#201, 1:20,000) respectively. Image was developed using NaQ™ ECL Substrate Kit (Cat#716).

### SUPPORT

SUPPORT@GENUINBIOTECH.COM  
TEL: +1-540-855-7041

### ORDERS

SALES@GENUINBIOTECH.COM  
FAX: +1-540-855-7041

WWW.GENUINBIOTECH.COM