

Anti-Growth factor receptor bound protein 2 Recombinant Rabbit Monoclonal Antibody



Catalog #: 4387

Aliases

GRB2; Growth Factor Receptor Bound Protein 2; Growth Factor Receptor-Bound Protein 2; NCKAP2; SH2/SH3 Adapter GRB2; Protein Ash; ASH; Epidermal Growth Factor Receptor-Binding Protein GRB2; Epididymis Secretory Sperm Binding Protein; Growth Factor Receptor-Bound Protein 3; Antibodyundant SRC Homology; Adapter Protein GRB2; EGFRBP-GRB2; MSTP084; Grb3-3; MST084; HT027

Background

Gene Name: GRB2

NCBI Gene Entry: [2885](#)

UniProt Entry: [P62993](#)

Application Information

Molecular Weight: Predicted, 25 kDa; observed, 25 kDa

Clonality: Rabbit monoclonal antibody

Clone ID: 24GB10965

Species Reactivity: Human, mouse, rat

Applications Tested: Western blotting (WB), flow cytometry (FCM)

Immunogen

A synthesized peptide derived from human GRB2

Isotype

Rabbit IgG

Storage Buffer

Supplied in PBS (pH 7.4) containing 50% glycerol, and 0.02% sodium azide.

Storage

Store at -20 °C for one year.

Recommended Dilutions

Western Blotting (WB): 1:1,000-1:5,000

Flow Cytometry (FCM): 1:2,000

SUPPORT

SUPPORT@GENUINBIOTECH.COM
TEL: +1-540-855-7041

ORDERS

SALES@GENUINBIOTECH.COM
FAX: +1-540-855-7041

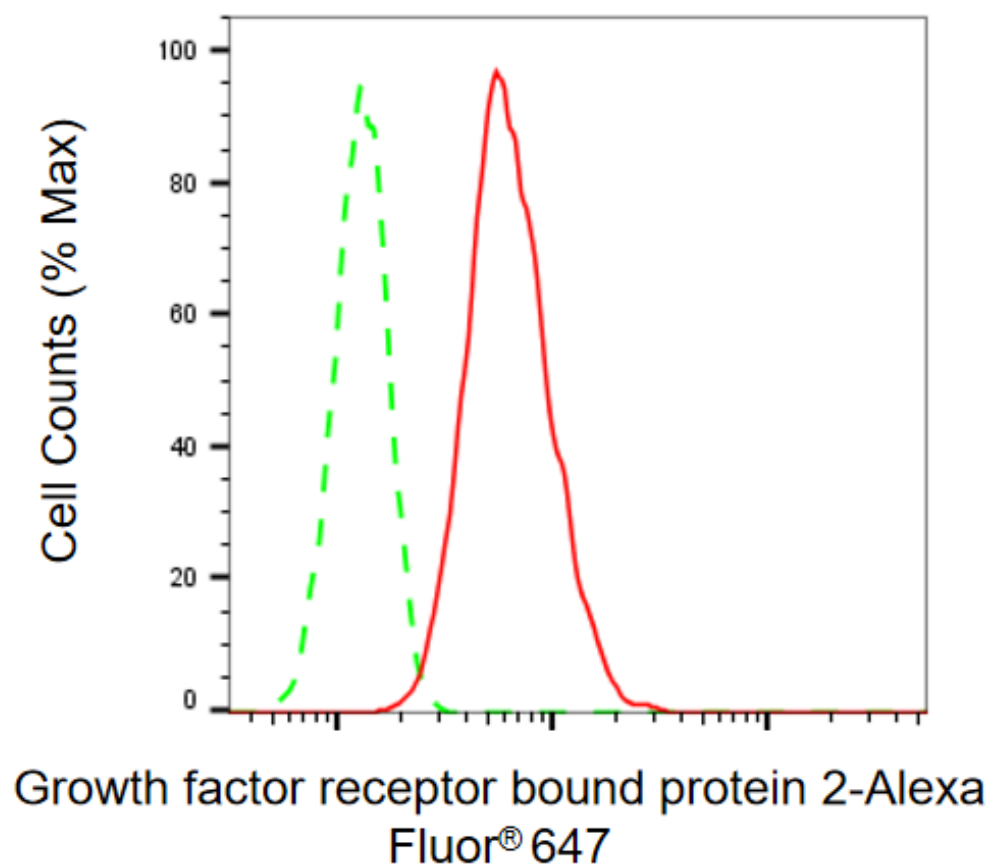
WWW.GENUINBIOTECH.COM

Anti-Growth factor receptor bound protein 2 Recombinant Rabbit Monoclonal Antibody

PAGE 2

Note: This product is for research use only.

Validation Data



Copyright ©2025 Genuin Biotechnologies LLC

Flow cytometric analysis of Growth factor receptor bound protein 2 expression in HT-1080 cells using anti-Growth factor receptor bound protein 2 antibody (Cat#4387, 1:2,000). Green, isotype control; red, Growth factor receptor bound protein 2.

SUPPORT

SUPPORT@GENUINBIOTECH.COM
TEL: +1-540-855-7041

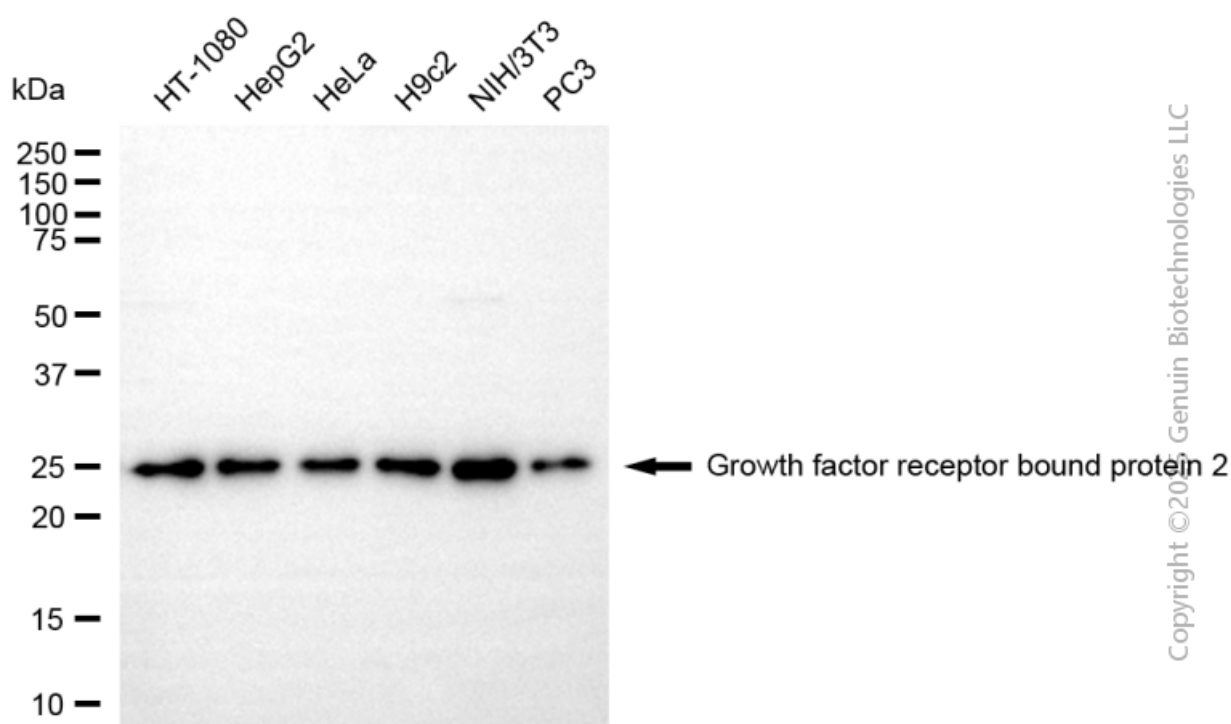
ORDERS

SALES@GENUINBIOTECH.COM
FAX: +1-540-855-7041

WWW.GENUINBIOTECH.COM

Anti-Growth factor receptor bound protein 2 Recombinant Rabbit Monoclonal Antibody

PAGE 3



Western blotting analysis using anti-growth factor receptor bound protein 2 antibody (Cat#4387). Total cell lysates (30 µg) from various cell lines were loaded and separated by SDS-PAGE. The blot was incubated with anti-growth factor receptor bound protein 2 antibody (Cat#4387, 1:5,000) and HRP-conjugated goat anti-rabbit secondary antibody (Cat#201, 1:20,000) respectively. Image was developed using NaQ™ ECL Substrate Kit (Cat#716).

SUPPORT

SUPPORT@GENUINBIOTECH.COM
TEL: +1-540-855-7041

ORDERS

SALES@GENUINBIOTECH.COM
FAX: +1-540-855-7041

WWW.GENUINBIOTECH.COM