

Anti-DNA ligase 4 Recombinant Rabbit Monoclonal Antibody



Catalog #: 4394

Aliases

LIG4; DNA Ligase 4; Polydeoxyribonucleotide Synthase [ATP] 4; DNA Ligase IV; Ligase IV, DNA, ATP-Dependent; Polynucleotide Ligase; DNA Repair Enzyme; DNA Joinase; EC 6.5.1.1; Sealase; LIG4S

Background

Gene Name: LIG4

NCBI Gene Entry: [3981](#)

UniProt Entry: [P49917](#)

Application Information

Molecular Weight: Predicted, 104 kDa; observed, 103 kDa

Clonality: Rabbit monoclonal antibody

Clone ID: 24GB11000

Species Reactivity: Human

Applications Tested: Western blotting (WB), flow cytometry (FCM), immunocytochemistry (IC)

Immunogen

A synthesized peptide derived from human DNA Ligase IV

Isotype

Rabbit IgG

Storage Buffer

Supplied in PBS (pH 7.4) containing 50% glycerol, and 0.02% sodium azide.

Storage

Store at -20 °C for one year.

Recommended Dilutions

Western Blotting (WB): 1:1,000-1:5,000

Flow Cytometry (FCM): 1:2,000

Immunocytochemistry (IC): 1:100-1:1,000

Note: This product is for research use only.

SUPPORT

SUPPORT@GENUINBIOTECH.COM
TEL: +1-540-855-7041

ORDERS

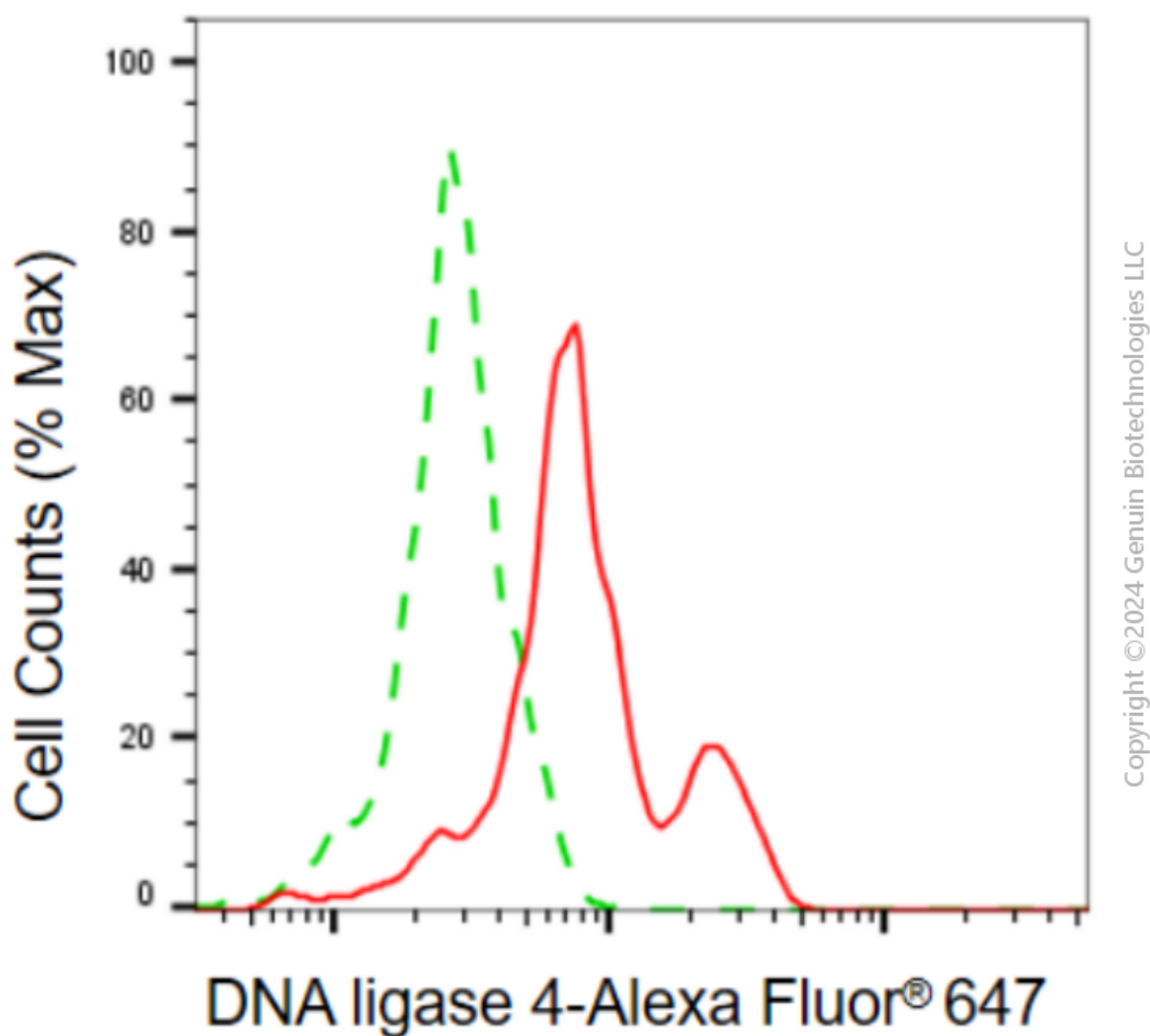
SALES@GENUINBIOTECH.COM
FAX: +1-540-855-7041

WWW.GENUINBIOTECH.COM

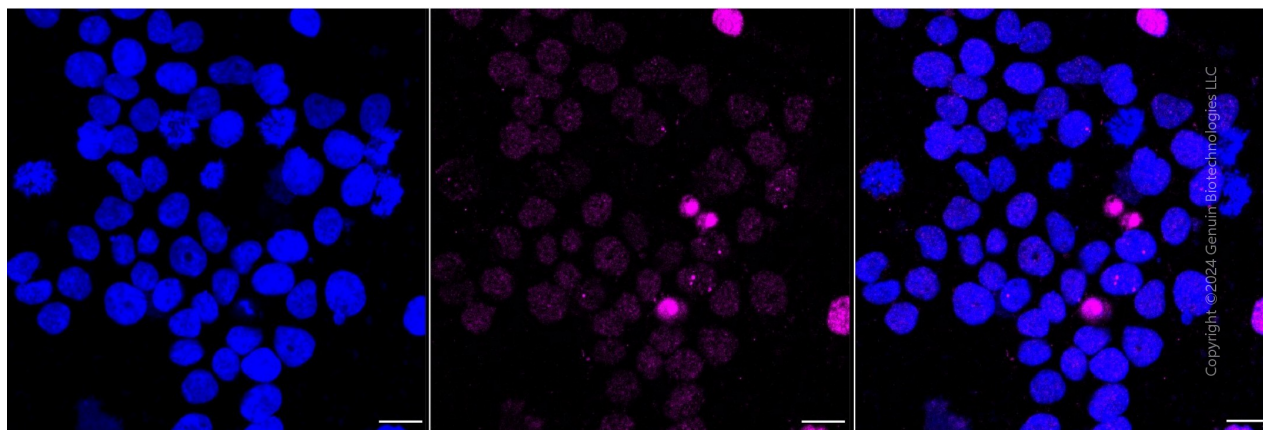
Anti-DNA ligase 4 Recombinant Rabbit Monoclonal Antibody

PAGE 2

Validation Data



Flow cytometric analysis of DNA ligase 4 expression in HeLa cells using anti-DNA ligase 4 antibody (Cat#4394, 1:2,000). Green, isotype control; red, DNA ligase 4.



SUPPORT

SUPPORT@GENUINBIOTECH.COM
TEL: +1-540-855-7041

ORDERS

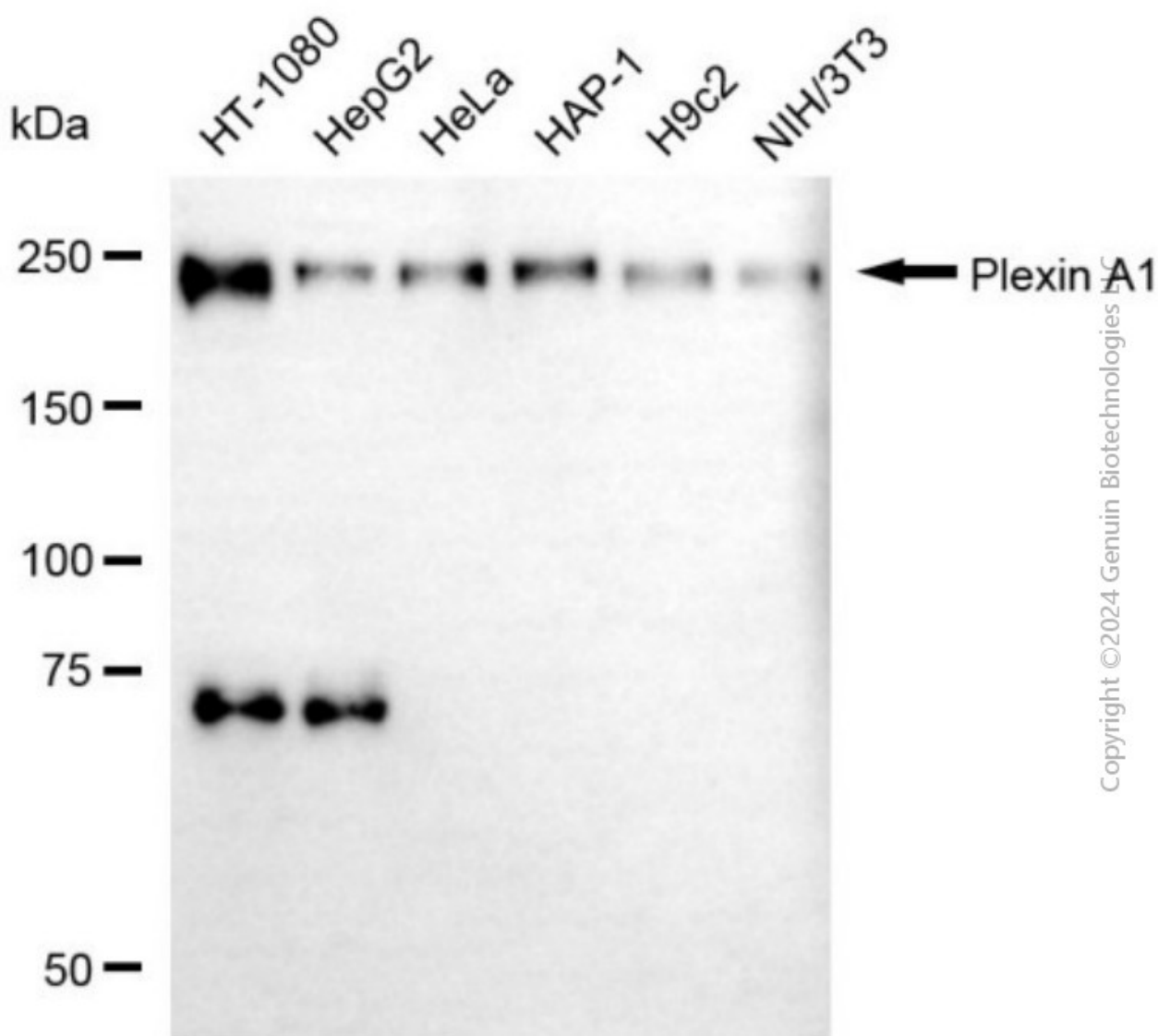
SALES@GENUINBIOTECH.COM
FAX: +1-540-855-7041

WWW.GENUINBIOTECH.COM

Anti-DNA ligase 4 Recombinant Rabbit Monoclonal Antibody

PAGE 3

Immunocytochemical staining of Hela cells with anti-DNA ligase 4 antibody (Cat#4394, 1:1,000). Nuclei were stained blue with DAPI; DNA ligase 4 was stained magenta with Alexa Fluor® 647. Images were taken using Leica stellaris 5. Protein abundance based on laser Intensity and smart gain: Low. Scale bar, 20 μ m.



Western blotting analysis using anti-DNA ligase 4 antibody (Cat#4394). Total cell lysates (30 μ g) from various cell lines were loaded and separated by SDS-PAGE. The blot was incubated with anti-DNA ligase 4 antibody (Cat#4394, 1:5,000) and HRP-conjugated goat anti-rabbit secondary antibody (Cat#201, 1:20,000) respectively. Image was developed using NaQ™ ECL Substrate Kit (Cat#716).

SUPPORT

SUPPORT@GENUINBIOTECH.COM
TEL: +1-540-855-7041

ORDERS

SALES@GENUINBIOTECH.COM
FAX: +1-540-855-7041

WWW.GENUINBIOTECH.COM