

# Anti-Zinc Finger E-Box Binding Homeobox 1 Recombinant Rabbit Monoclonal Antibody



**Catalog #: 4396**

## Aliases

ZEB1; Zinc Finger E-Box Binding Homeobox 1; AREB6; Zfhx1a; Zfhbp; FECD6; TCF8; BZP; Transcription Factor 8 (Represses Interleukin 2 Expression); Posterior Polymorphous Corneal Dystrophy 3; Zinc Finger E-Box-Binding Homeobox 1; Negative Regulator Of IL2; NIL-2-A; PPCD3; ZEB; Zinc Finger Homeodomain Enhancer-Binding Protein; Delta-Crystallin Enhancer Binding Factor 1; NIL-2-A Zinc Finger Protein; Transcription Factor 8; DELTAEF1; NIL2A; TCF-8

## Background

Gene Name: ZEB1

NCBI Gene Entry: [6935](#)

UniProt Entry: [P37275](#)

## Application Information

Molecular Weight: Predicted, 124 kDa; observed, 200 kDa

Clonality: Rabbit monoclonal antibody

Clone ID: 24GB11010

Species Reactivity: Human, mouse

Applications Tested: Western blotting (WB), flow cytometry (FCM), immunocytochemistry (IC)

## Immunogen

A synthesized peptide derived from human AREB6

## Isotype

Rabbit IgG

## Storage Buffer

Supplied in PBS (pH 7.4) containing 50% glycerol, and 0.02% sodium azide.

## Storage

Store at -20 °C for one year.

## Recommended Dilutions

Western Blotting (WB): 1:1,000-1:5,000

Flow Cytometry (FCM): 1:2,000

Immunocytochemistry (IC): 1:100-1:1,000

---

### SUPPORT

SUPPORT@GENUINBIOTECH.COM  
TEL: +1-540-855-7041

### ORDERS

SALES@GENUINBIOTECH.COM  
FAX: +1-540-855-7041

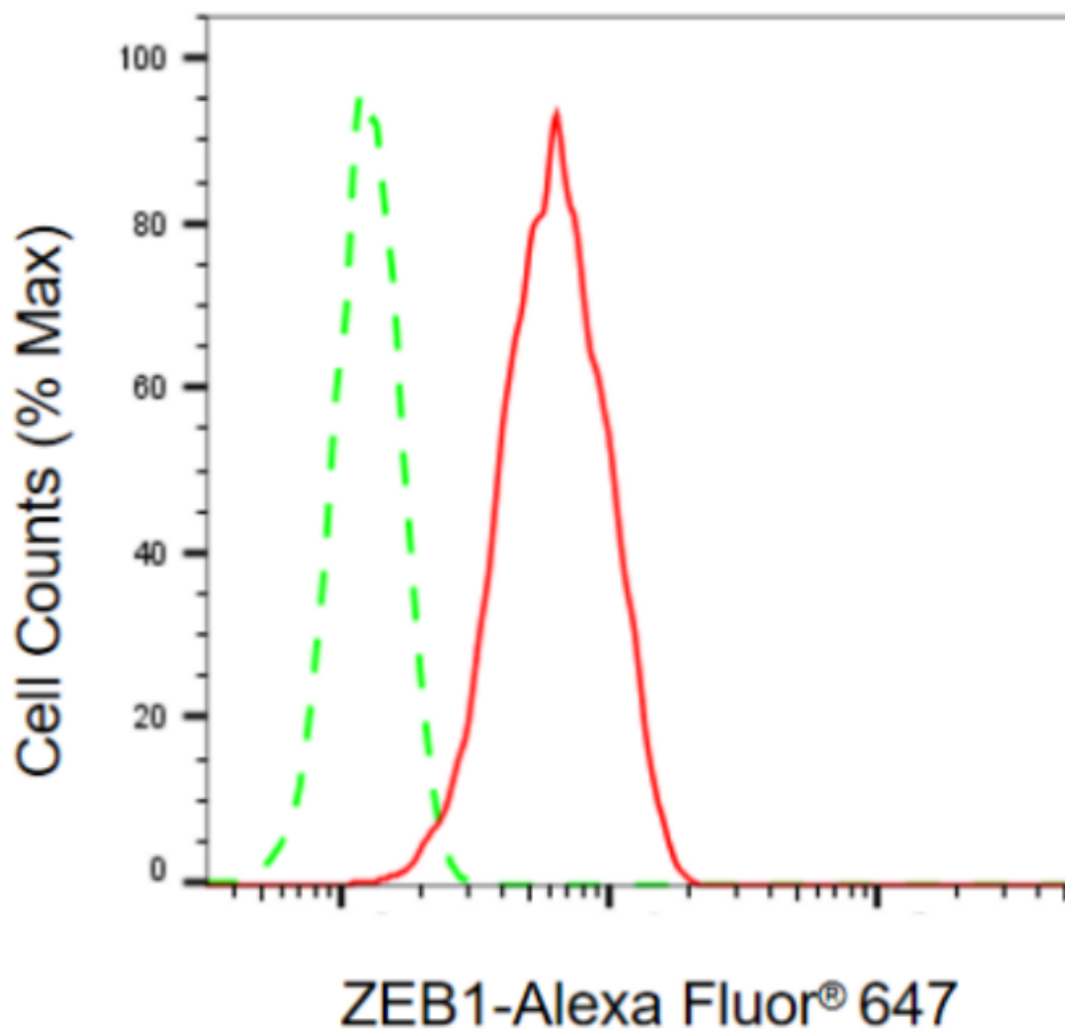
[WWW.GENUINBIOTECH.COM](http://WWW.GENUINBIOTECH.COM)

# Anti-Zinc Finger E-Box Binding Homeobox 1 Recombinant Rabbit Monoclonal Antibody

PAGE 2

**Note:** This product is for research use only.

## Validation Data



Copyright ©2024 Genuin Biotechnologies LLC

Flow cytometric analysis of ZEB1 expression in C2C12 cells using anti-ZEB1 antibody (Cat#4396, 1:2,000). Green, isotype control; red, ZEB1.

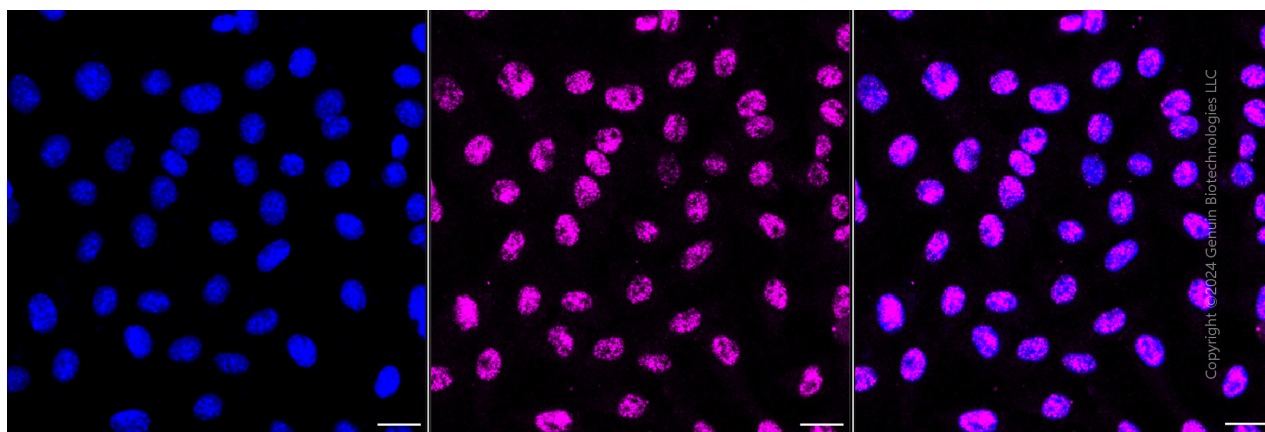
### SUPPORT

SUPPORT@GENUINBIOTECH.COM  
TEL: +1-540-855-7041

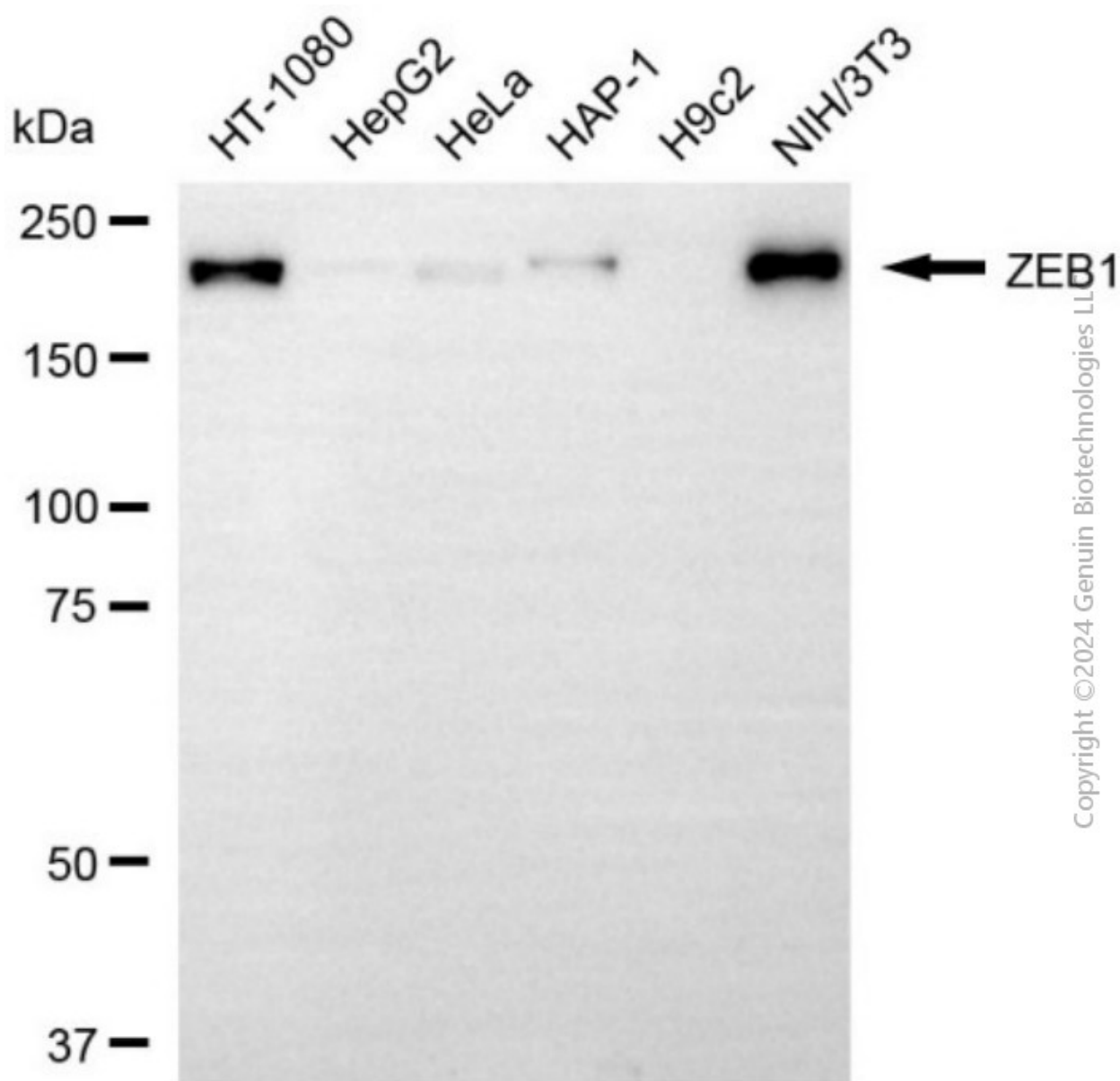
### ORDERS

SALES@GENUINBIOTECH.COM  
FAX: +1-540-855-7041

[WWW.GENUINBIOTECH.COM](http://WWW.GENUINBIOTECH.COM)



Immunocytochemical staining of C2C12 cells with anti-ZEB1 antibody (Cat#4396, 1: 1,000). Nuclei were stained blue with DAPI; ZEB1 was stained magenta with Alexa Fluor® 647. Images were taken using Leica stellaris 5. Protein abundance based on laser Intensity and smart gain: Medium. Scale bar, 20  $\mu$ m.



Western blotting analysis using anti-ZEB1 antibody (Cat#4396). Total cell lysates (30 µg) from various cell lines were loaded and separated by SDS-PAGE. The blot was incubated with anti-ZEB1 antibody (Cat#4396, 1:5,000) and HRP-conjugated goat anti-rabbit secondary antibody (Cat#201, 1:20,000) respectively. Image was developed using NaQ™ ECL Substrate Kit (Cat#716).