

Anti-Cullin 1 Recombinant Rabbit Monoclonal Antibody



Catalog #: 4397

Aliases

CUL1; Cullin 1; Cullin-1; CUL-1

Background

Gene Name: CUL1

NCBI Gene Entry: [8454](#)

UniProt Entry: [Q13616](#)

Application Information

Molecular Weight: Predicted, 90 kDa; observed, 80 kDa

Clonality: Rabbit monoclonal antibody

Clone ID: 24GB11015

Species Reactivity: Human, mouse, rat

Applications Tested: Western blotting (WB), flow cytometry (FCM), immunocytochemistry (IC)

Immunogen

A synthesized peptide derived from human Cullin 1

Isotype

Rabbit IgG

Storage Buffer

Supplied in PBS (pH 7.4) containing 50% glycerol, and 0.02% sodium azide.

Storage

Store at -20 °C for one year.

Recommended Dilutions

Western Blotting (WB): 1:1,000-1:5,000

Flow Cytometry (FCM): 1:2,000

Immunocytochemistry (IC): 1:100-1:1,000

Note: This product is for research use only.

Validation Data

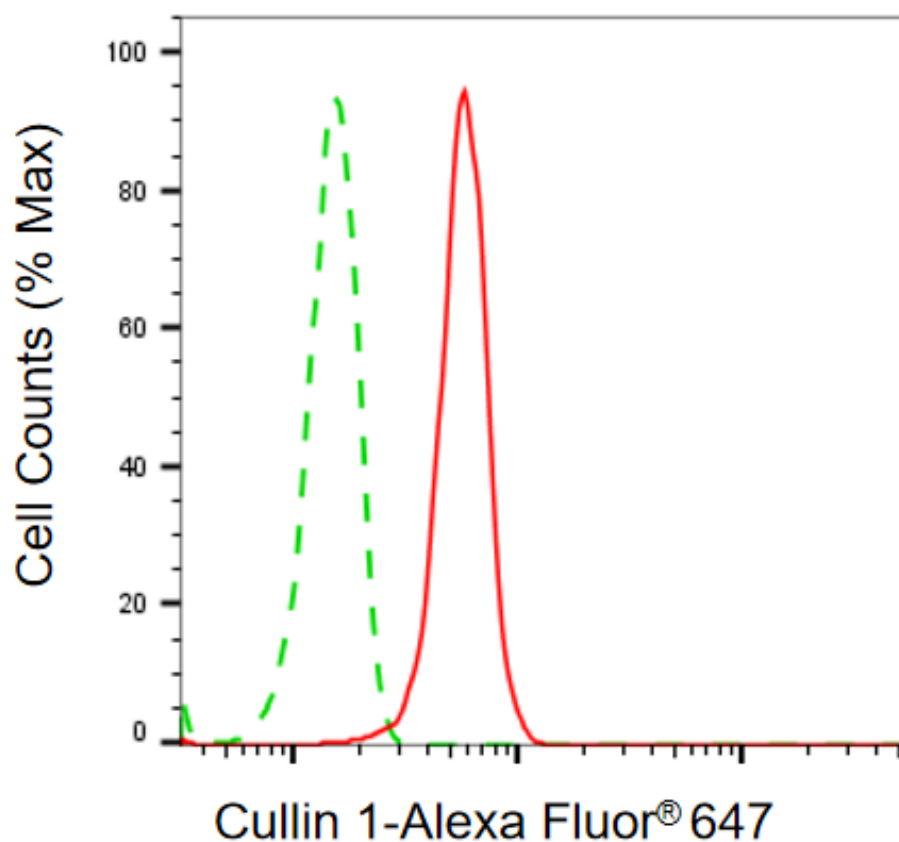
SUPPORT

SUPPORT@GENUINBIOTECH.COM
TEL: +1-540-855-7041

ORDERS

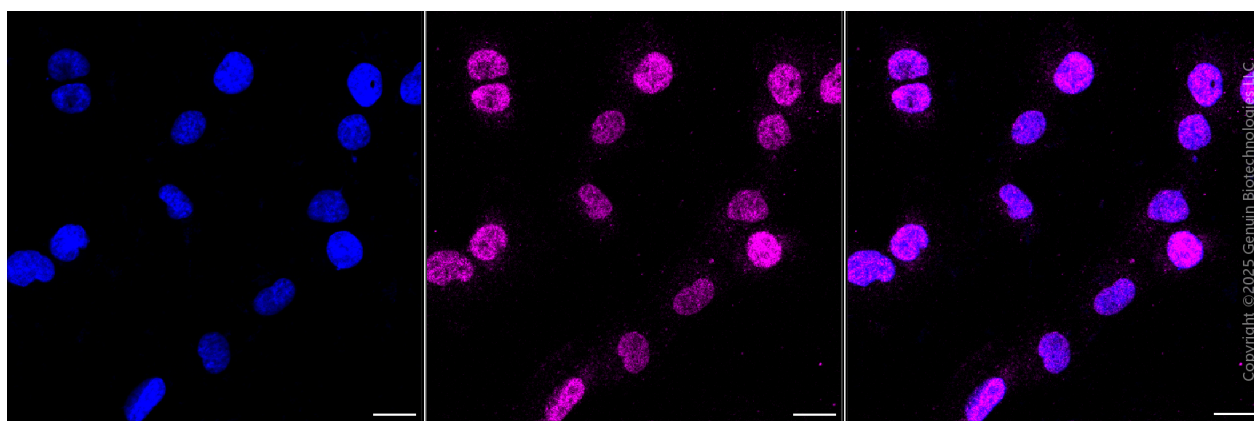
SALES@GENUINBIOTECH.COM
FAX: +1-540-855-7041

WWW.GENUINBIOTECH.COM



Copyright ©2025 Genuin Biotechnologies LLC

Flow cytometric analysis of Cullin 1 expression in HT-1080 cells using anti-Cullin 1 antibody (Cat#4397, 1:2,000). Green, isotype control; red, Cullin 1.



Immunocytochemical staining of HT-1080 cells with anti-Cullin 1 antibody (Cat#4397, 1:1,000). Nuclei were stained blue with DAPI; Cullin 1 was stained magenta with Alexa Fluor® 647. Images were taken using Leica stellaris 5. Protein abundance based on laser Intensity and smart gain: Medium. Scale bar, 20 μ m.

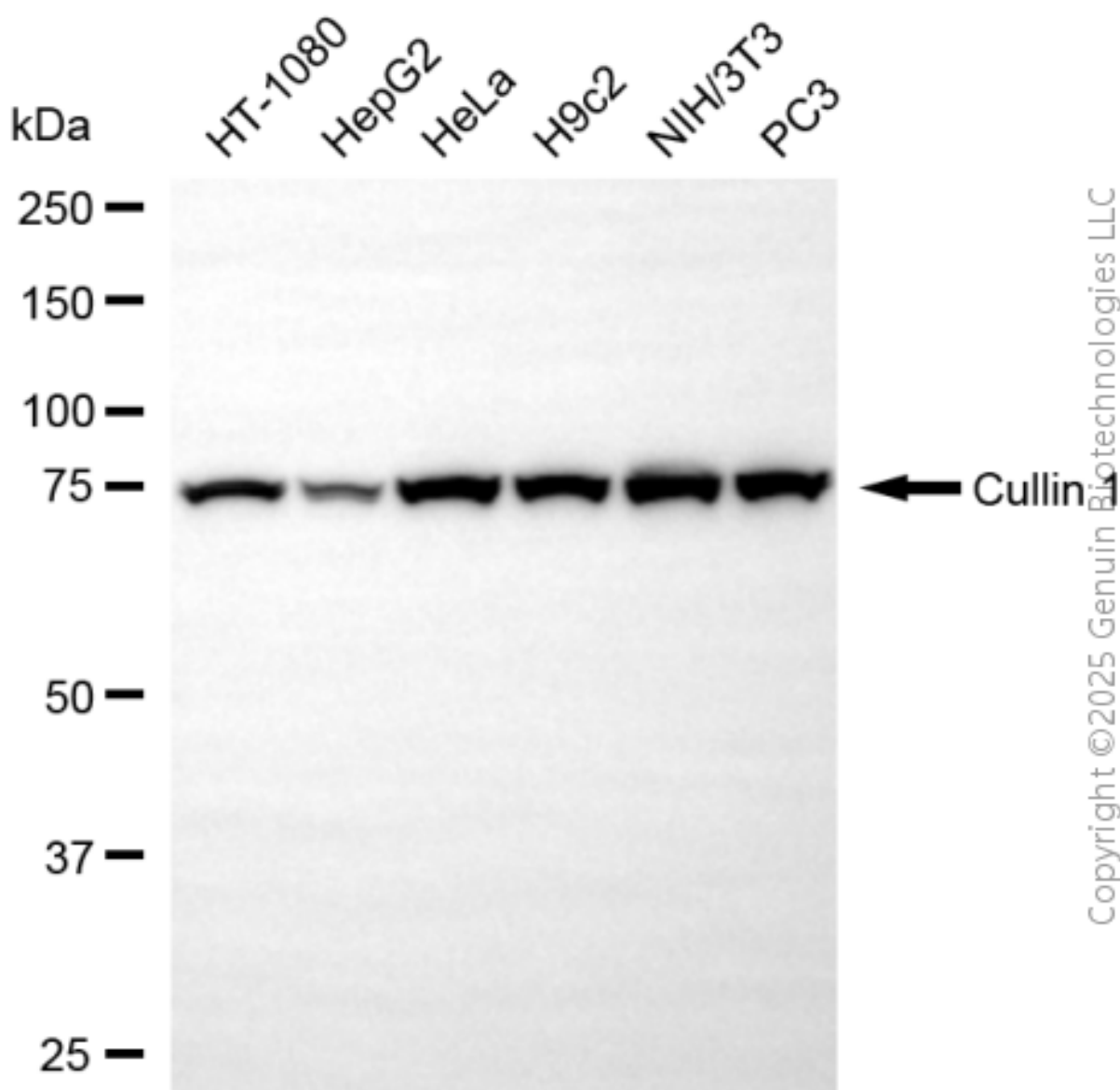
SUPPORT

SUPPORT@GENUINBIOTECH.COM
TEL: +1-540-855-7041

ORDERS

SALES@GENUINBIOTECH.COM
FAX: +1-540-855-7041

WWW.GENUINBIOTECH.COM



Western blotting analysis using anti-cullin 1 antibody (Cat#4397). Total cell lysates (30 μ g) from various cell lines were loaded and separated by SDS-PAGE. The blot was incubated with anti-cullin 1 antibody (Cat#4397, 1:5,000) and HRP-conjugated goat anti-rabbit secondary antibody (Cat#201, 1:20,000) respectively. Image was developed using NaQTM ECL Substrate Kit (Cat#716).