

# Anti-Methyl-CpG Binding Domain Protein 2 Recombinant Rabbit Monoclonal Antibody



**Catalog #: 4398**

## Aliases

MBD2; Methyl-CpG Binding Domain Protein 2; Methyl-CpG-Binding Domain Protein 2;  
Demethylase; DMTase; Methyl-CpG-Binding Protein MBD2; NY-CO-41

## Background

Gene Name: MBD2

NCBI Gene Entry: [8932](#)

UniProt Entry: [Q9UBB5](#)

## Application Information

Molecular Weight: Predicted, 43 kDa; observed, 29,43 kDa

Clonality: Rabbit monoclonal antibody

Clone ID: 24GB11020

Species Reactivity: Human, mouse, rat

Applications Tested: Western blotting (WB), flow cytometry (FCM), immunocytochemistry (IC)

## Immunogen

A synthesized peptide derived from human MBD2

## Isotype

Rabbit IgG

## Storage Buffer

Supplied in PBS (pH 7.4) containing 50% glycerol, and 0.02% sodium azide.

## Storage

Store at -20 °C for one year.

## Recommended Dilutions

Western Blotting (WB): 1:2,000-1:10,000

Immunocytochemistry (IC): 1:100-1:1,000

Flow Cytometry (FCM): 1:2,000

**Note:** This product is for research use only.

## Validation Data

---

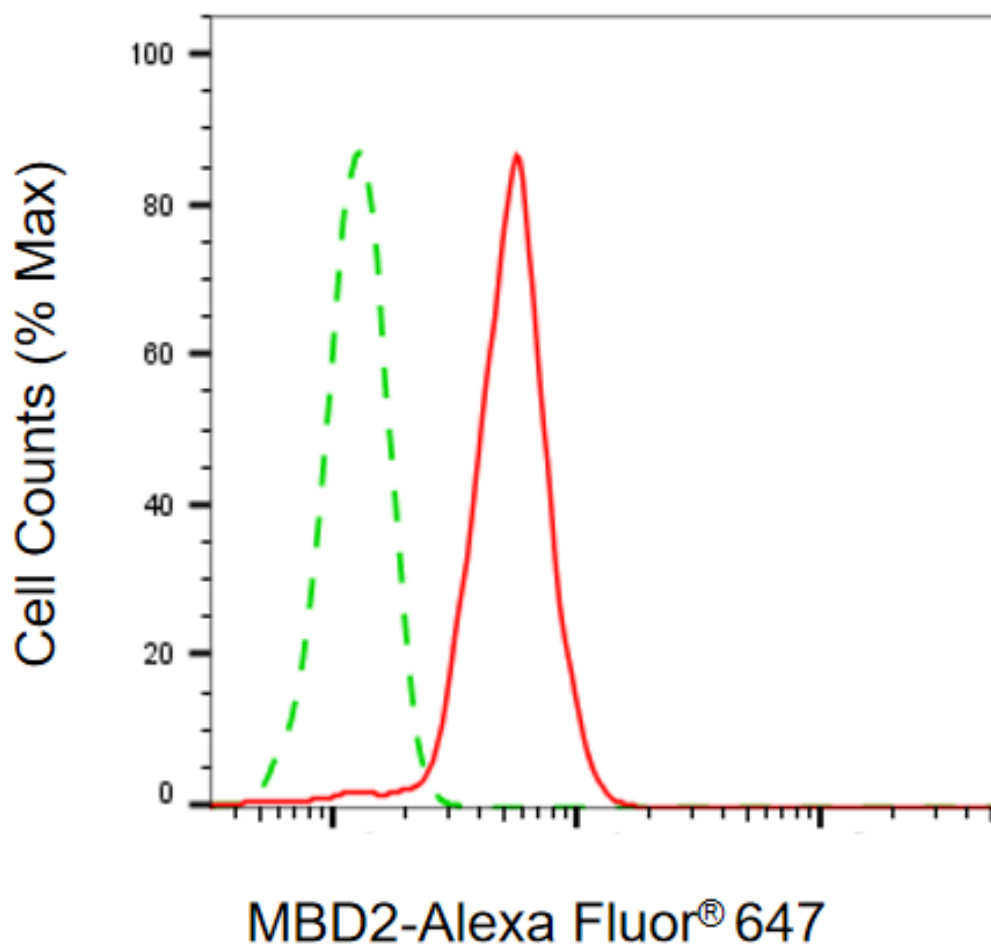
### SUPPORT

SUPPORT@GENUINBIOTECH.COM  
TEL: +1-540-855-7041

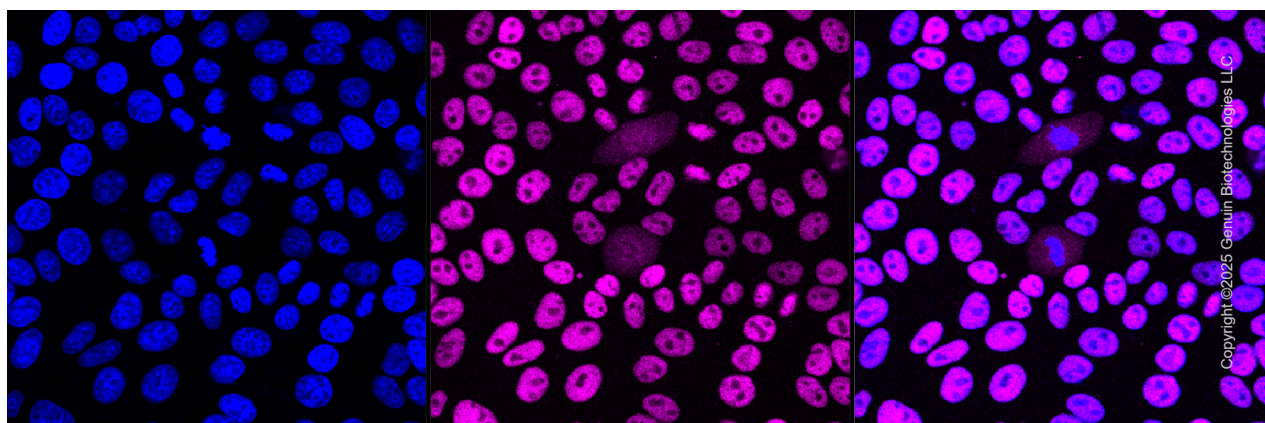
### ORDERS

SALES@GENUINBIOTECH.COM  
FAX: +1-540-855-7041

[WWW.GENUINBIOTECH.COM](http://WWW.GENUINBIOTECH.COM)



Flow cytometric analysis of MBD2 expression in HepG2 cells using anti-MBD2 antibody (Cat#4398, 1:2,000). Green, isotype control; red, MBD2.

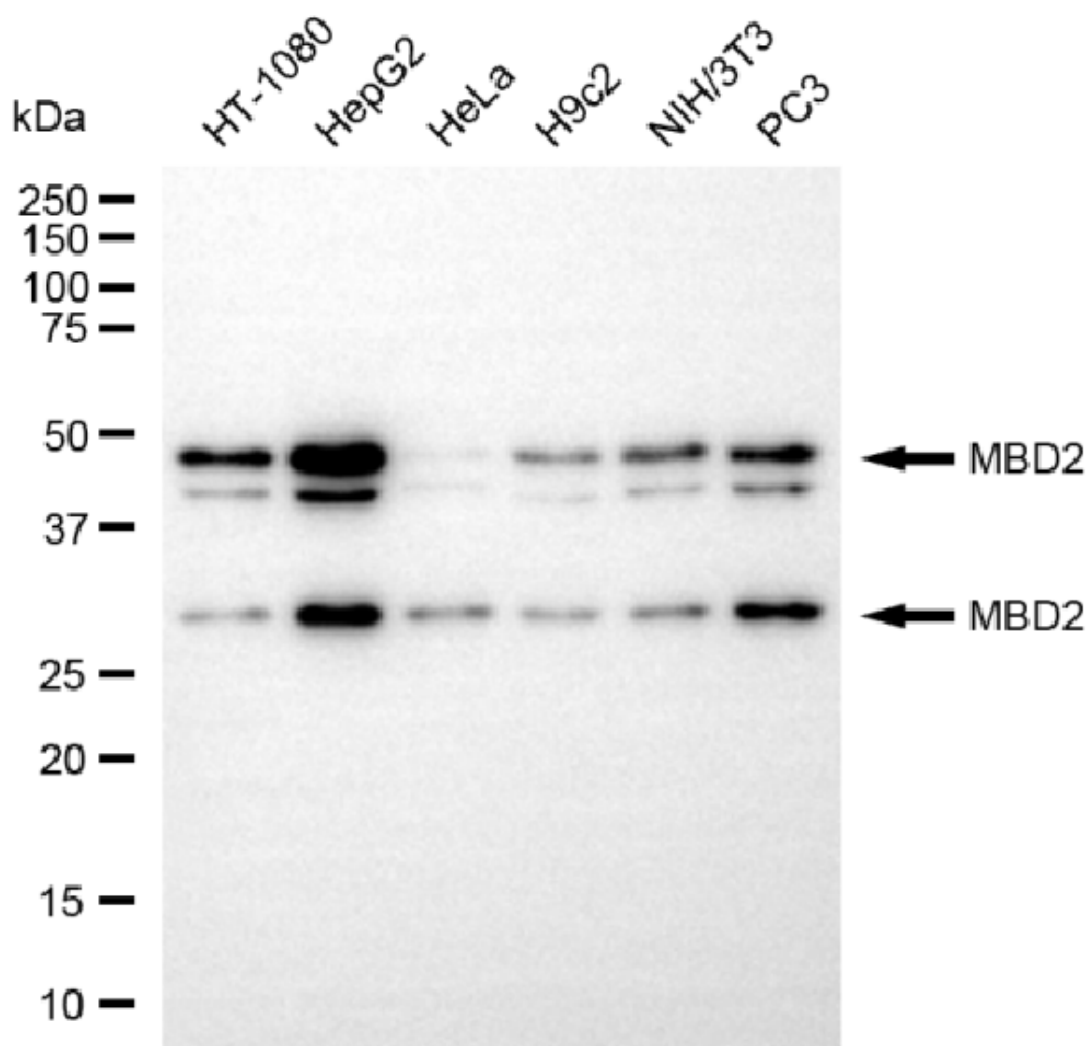


Immunocytochemical staining of HepG2 cells with anti-MBD2 antibody (Cat#4398, 1:1,000). Nuclei were stained blue with DAPI; MBD2 was stained magenta with Alexa Fluor® 647. Images were taken using Leica stellaris 5. Protein abundance based on laser Intensity and smart gain:

## Anti-Methyl-CpG Binding Domain Protein 2 Recombinant Rabbit Monoclonal Antibody

PAGE 3

Medium. Scale bar, 20  $\mu$ m.



Copyright ©2025 Genuin Biotechnologies LLC

Western blotting analysis using anti-MBD2 antibody (Cat#4398). Total cell lysates (30  $\mu$ g) from various cell lines were loaded and separated by SDS-PAGE. The blot was incubated with anti-MBD2 antibody (Cat#4398, 1:10,000) and HRP-conjugated goat anti-rabbit secondary antibody (Cat#201, 1:20,000) respectively. Image was developed using NaQ™ ECL Substrate Kit (Cat#716).

### SUPPORT

SUPPORT@GENUINBIOTECH.COM  
TEL: +1-540-855-7041

### ORDERS

SALES@GENUINBIOTECH.COM  
FAX: +1-540-855-7041

WWW.GENUINBIOTECH.COM