

# Anti-PFKFB3 Recombinant Rabbit Monoclonal Antibody



**Catalog #: 4399**

## Aliases

PFKFB3; 6-Phosphofructo-2-Kinase/Fructose-2,6-Bisphosphatase 3; 6-Phosphofructo-2-Kinase/Fructose-2,6-Bisphosphatase 3; 6PF-2-K/Fru-2,6-P2ase Brain/Placenta-Type Isozyme 3; Renal Carcinoma Antigen NY-REN-56; 6PF-2-K/Fru-2,6-P2ase 3; PFK/FBPase 3; IPFK-2; Inducible 6-Phosphofructo-2-Kinase/Fructose-2,6-Bisphosphatase; Fructose-6-Phosphate,2-Kinase/Fructose-2,6-Bisphosphatase; 6-Phosphofructo-2-Kinase/ Fructose-2,6-Bisphosphatase; IPFK2; PFK2

## Background

Gene Name: PFKFB3

NCBI Gene Entry: [5209](#)

UniProt Entry: [Q16875](#)

## Application Information

Molecular Weight: Predicted, 60 kDa; observed, 58 kDa

Clonality: Rabbit monoclonal antibody

Clone ID: 24GB11025

Species Reactivity: Human, rat

Applications Tested: Western blotting (WB), flow cytometry (FCM), immunocytochemistry (IC)

## Immunogen

A synthesized peptide derived from human PFKFB3

## Isotype

Rabbit IgG

## Storage Buffer

Supplied in PBS (pH 7.4) containing 50% glycerol, and 0.02% sodium azide.

## Storage

Store at -20 °C for one year.

## Recommended Dilutions

Western Blotting (WB): 1:1,000-1:5,000

Flow Cytometry (FCM): 1:2,000

Immunocytochemistry (IC): 1:100-1:1,000

---

### SUPPORT

SUPPORT@GENUINBIOTECH.COM  
TEL: +1-540-855-7041

### ORDERS

SALES@GENUINBIOTECH.COM  
FAX: +1-540-855-7041

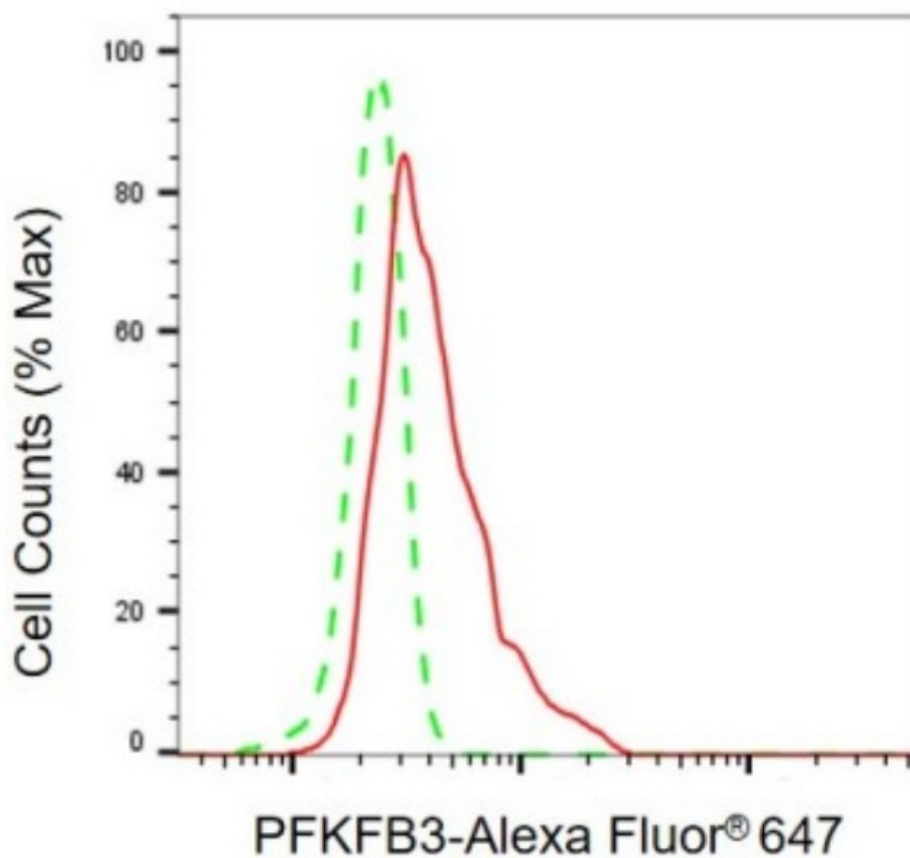
[WWW.GENUINBIOTECH.COM](http://WWW.GENUINBIOTECH.COM)

# Anti-PFKFB3 Recombinant Rabbit Monoclonal Antibody

PAGE 2

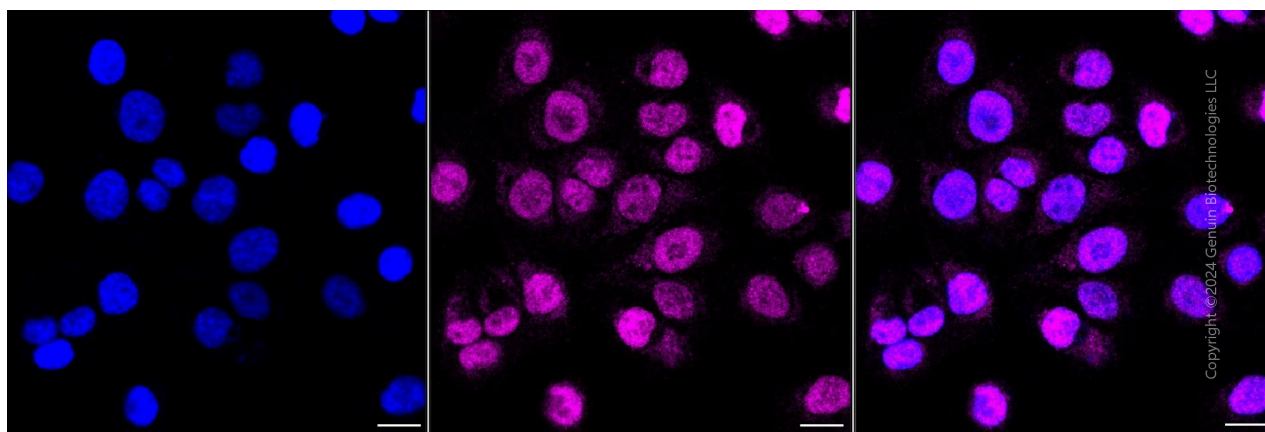
**Note:** This product is for research use only.

## Validation Data



Copyright ©2024 Genuin Biotechnologies LLC

Flow cytometric analysis of PFKFB3 expression in HT-1080 cells using anti-PFKFB3 antibody (Cat#4399, 1:2,000). Green, isotype control; red, PFKFB3.



Copyright ©2024 Genuin Biotechnologies LLC

Immunocytochemical staining of HT-1080 cells with anti-PFKFB3 antibody (Cat#4399, 1:1,000).

### SUPPORT

SUPPORT@GENUINBIOTECH.COM  
TEL: +1-540-855-7041

### ORDERS

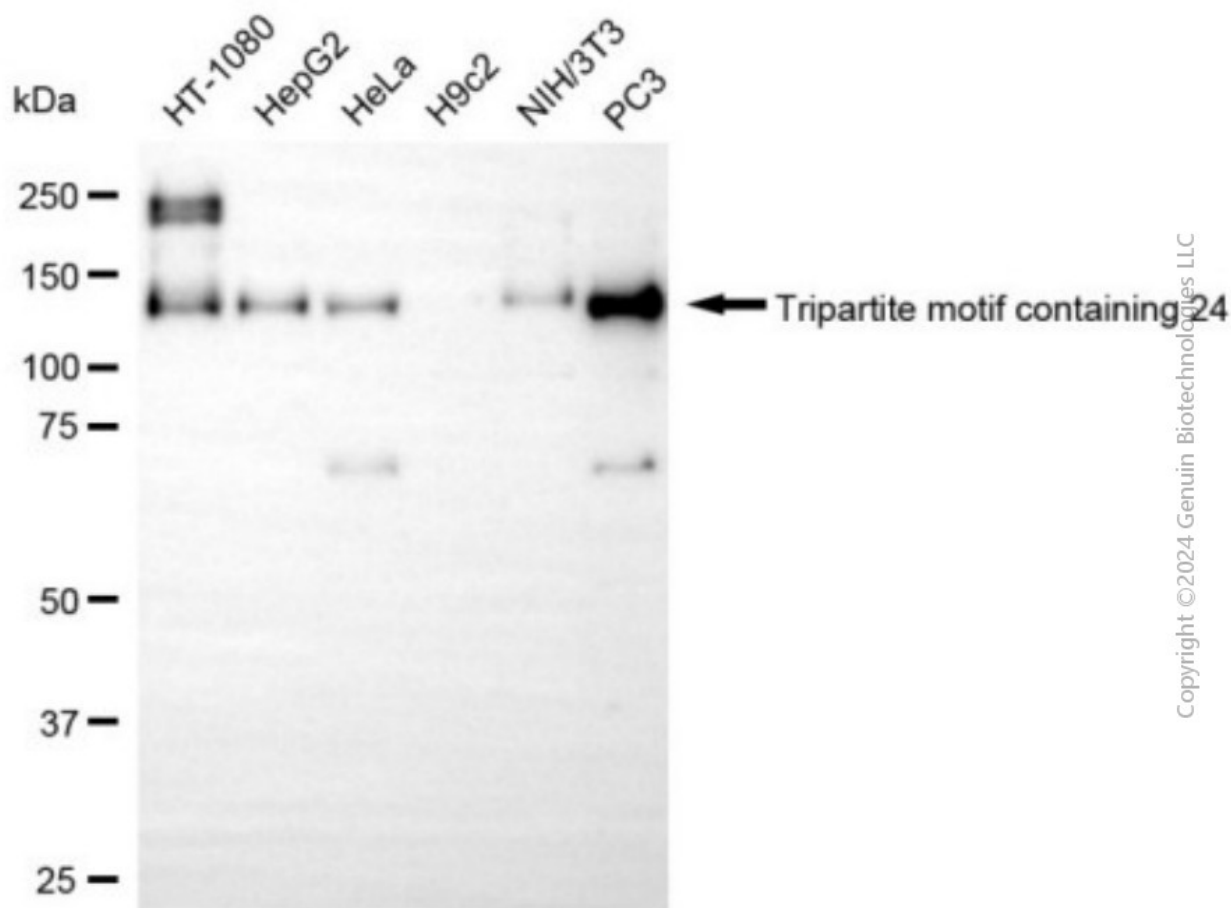
SALES@GENUINBIOTECH.COM  
FAX: +1-540-855-7041

WWW.GENUINBIOTECH.COM

## Anti-PFKFB3 Recombinant Rabbit Monoclonal Antibody

PAGE 3

Nuclei were stained blue with DAPI; PFKFB3 was stained magenta with Alexa Fluor® 647. Images were taken using Leica stellaris 5. Protein abundance based on laser Intensity and smart gain: Medium. Scale bar, 20 µm.



Western blotting analysis using anti-PFKFB3 antibody (Cat#4399). Total cell lysates (30 µg) from various cell lines were loaded and separated by SDS-PAGE. The blot was incubated with anti-PFKFB3 antibody (Cat#4399, 1:5,000) and HRP-conjugated goat anti-rabbit secondary antibody (Cat#201, 1:20,000) respectively. Image was developed using NaQ™ ECL Substrate Kit (Cat#716).

### SUPPORT

SUPPORT@GENUINBIOTECH.COM  
TEL: +1-540-855-7041

### ORDERS

SALES@GENUINBIOTECH.COM  
FAX: +1-540-855-7041

WWW.GENUINBIOTECH.COM