

# Anti-KSR1 Recombinant Rabbit Monoclonal Antibody



**Catalog #: 4400**

## Aliases

KSR1; Kinase Suppressor Of Ras 1; RSU2; KSR; Kinase Suppressor Of Ras; EC 2.7.11.1

## Background

Gene Name: KSR1

NCBI Gene Entry: [8844](#)

UniProt Entry: [Q8IVT5](#)

## Application Information

Molecular Weight: Predicted, 102 kDa; observed, 120 kDa

Clonality: Rabbit monoclonal antibody

Clone ID: 24GB11030

Species Reactivity: Human, mouse, rat

Applications Tested: Western blotting (WB), flow cytometry (FCM), immunocytochemistry (IC)

## Immunogen

A synthesized peptide derived from human KSR1

## Isotype

Rabbit IgG

## Storage Buffer

Supplied in PBS (pH 7.4) containing 50% glycerol, and 0.02% sodium azide.

## Storage

Store at -20 °C for one year.

## Recommended Dilutions

Western Blotting (WB): 1:1,000-1:5,000

Flow Cytometry (FCM): 1:2,000

Immunocytochemistry (IC): 1:100-1:1,000

**Note:** This product is for research use only.

## Validation Data

---

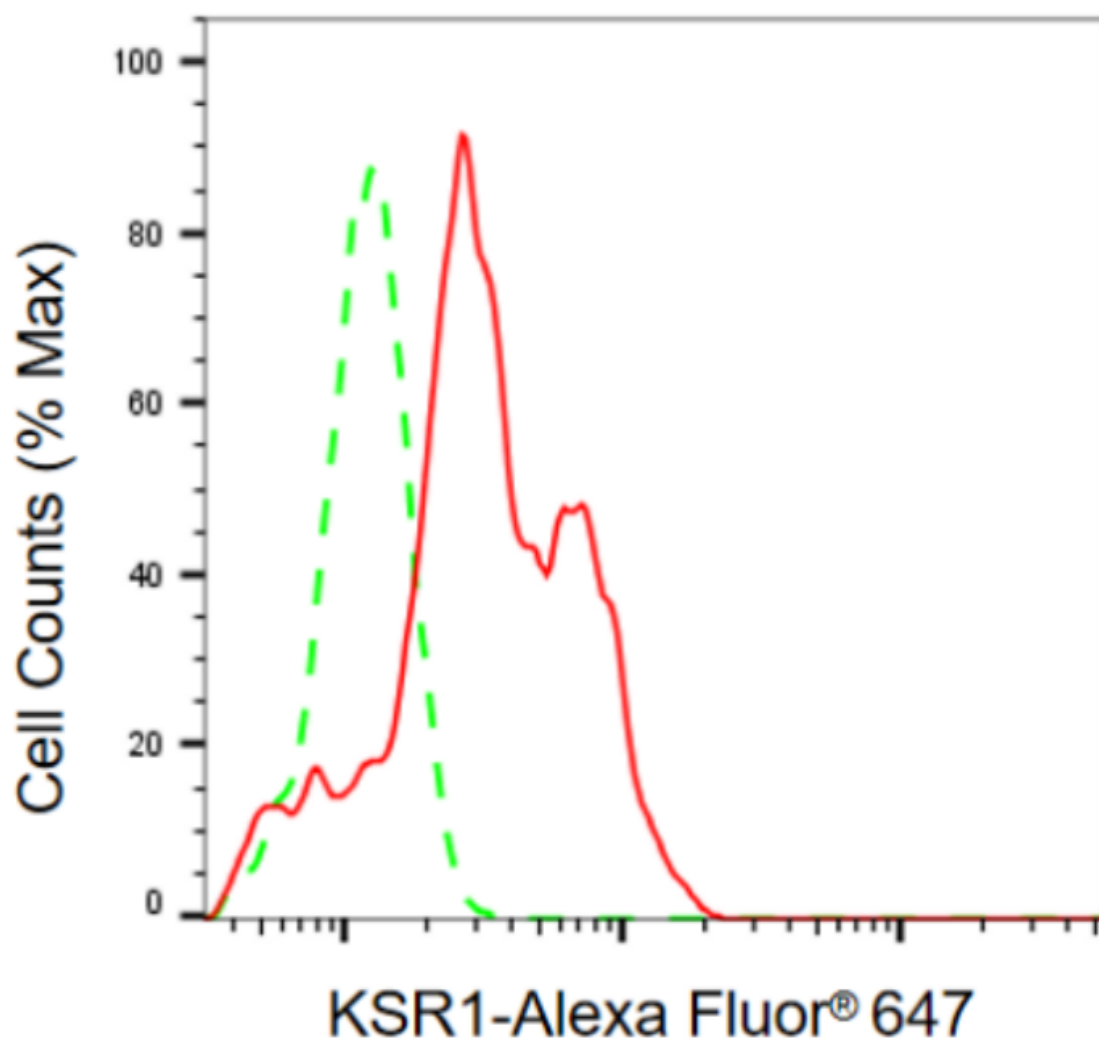
### SUPPORT

SUPPORT@GENUINBIOTECH.COM  
TEL: +1-540-855-7041

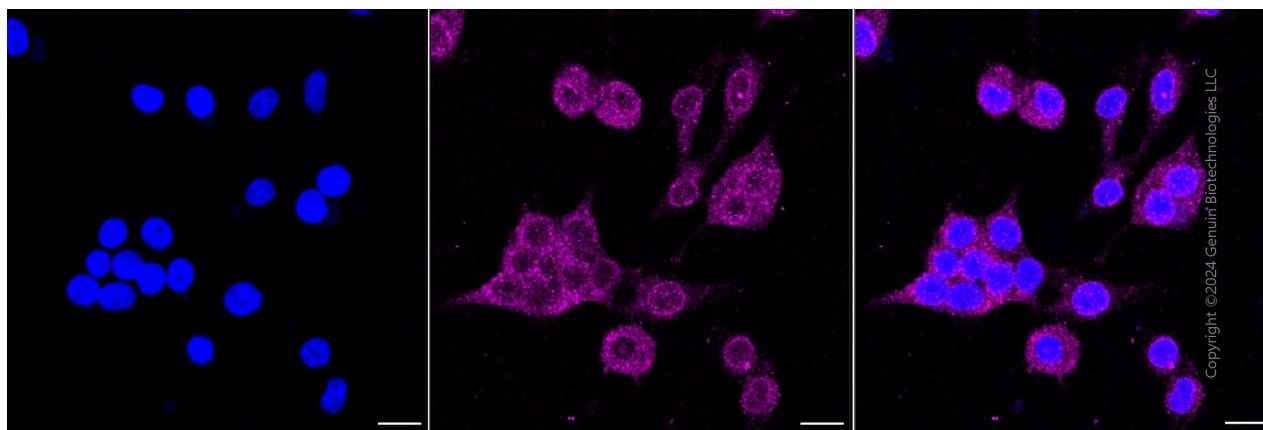
### ORDERS

SALES@GENUINBIOTECH.COM  
FAX: +1-540-855-7041

[WWW.GENUINBIOTECH.COM](http://WWW.GENUINBIOTECH.COM)



Flow cytometric analysis of KSR1 expression in HeLa cells using anti-KSR1 antibody (Cat#4400, 1:2,000). Green, isotype control; red, KSR1.



Immunocytochemical staining of HeLa cells with anti-KSR1 antibody (Cat4400, 1:1,000). Nuclei

**SUPPORT**

SUPPORT@GENUINBIOTECH.COM  
TEL: +1-540-855-7041

**ORDERS**

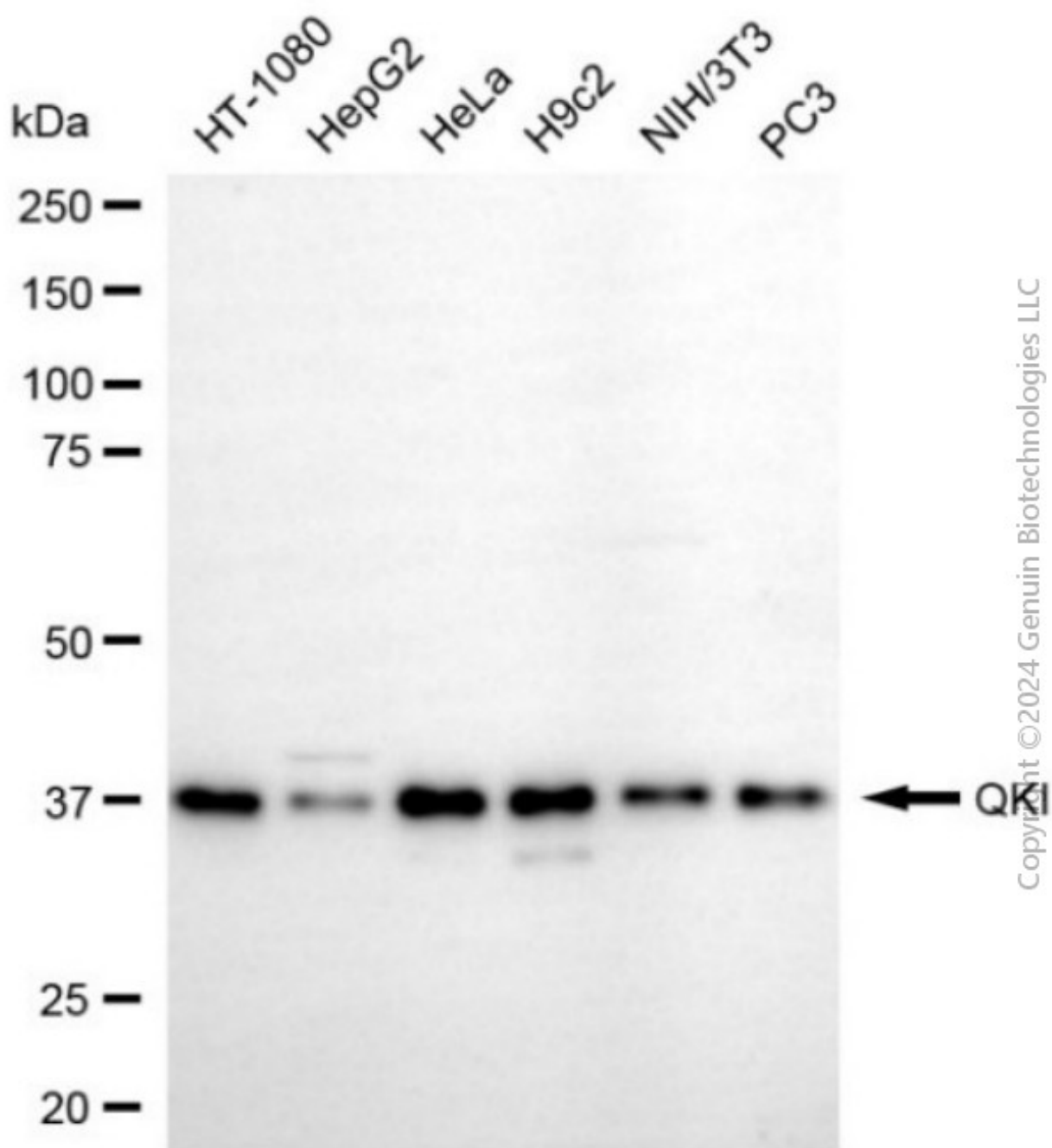
SALES@GENUINBIOTECH.COM  
FAX: +1-540-855-7041

**WWW.GENUINBIOTECH.COM**

## Anti-KSR1 Recombinant Rabbit Monoclonal Antibody

PAGE 3

were stained blue with DAPI; KSR1 was stained magenta with Alexa Fluor® 647. Images were taken using Leica stellaris 5. Protein abundance based on laser Intensity and smart gain: Medium. Scale bar, 20 µm.



Western blotting analysis using anti-KSR1 antibody (Cat#4400). Total cell lysates (30 µg) from various cell lines were loaded and separated by SDS-PAGE. The blot was incubated with anti-KSR1 antibody (Cat#4400, 1:5,000) and HRP-conjugated goat anti-rabbit secondary antibody (Cat#201, 1:20,000) respectively. Image was developed using NaQ™ ECL Substrate Kit

### SUPPORT

SUPPORT@GENUINBIOTECH.COM  
TEL: +1-540-855-7041

### ORDERS

SALES@GENUINBIOTECH.COM  
FAX: +1-540-855-7041

[WWW.GENUINBIOTECH.COM](http://WWW.GENUINBIOTECH.COM)

# **Anti-KSR1 Recombinant Rabbit Monoclonal Antibody**

PAGE 4

(Cat#716).

---

## **SUPPORT**

SUPPORT@GENUINBIOTECH.COM  
TEL: +1-540-855-7041

## **ORDERS**

SALES@GENUINBIOTECH.COM  
FAX:+1-540-855-7041

**[WWW.GENUINBIOTECH.COM](http://WWW.GENUINBIOTECH.COM)**