

Anti-Nuclear Mitotic Apparatus Protein 1 Recombinant Rabbit Monoclonal Antibody



Catalog #: 4404

Aliases

NUMA1; Nuclear Mitotic Apparatus Protein 1; NUMA; Nuclear Matrix Protein-22; SP-H Antigen; NMP-22; Centrophilin Stabilizes Mitotic Spindle In Mitotic Cells; Nuclear Mitotic Apparatus Protein; Structural Nuclear Protein; NuMA Protein; NMP22

Background

Gene Name: NUMA1

NCBI Gene Entry: [4926](#)

UniProt Entry: [Q14980](#)

Application Information

Molecular Weight: Predicted, 238 kDa; observed, 248 kDa

Clonality: Rabbit monoclonal antibody

Clone ID: 24GB11050

Species Reactivity: Human, mouse, rat

Applications Tested: Western blotting (WB), flow cytometry (FCM), immunocytochemistry (IC)

Immunogen

A synthesized peptide derived from human NUMA1

Isotype

Rabbit IgG

Storage Buffer

Supplied in PBS (pH 7.4) containing 50% glycerol, and 0.02% sodium azide.

Storage

Store at -20 °C for one year.

Recommended Dilutions

Western Blotting (WB): 1:1,000-1:5,000

Flow Cytometry (FCM): 1:2,000

Immunocytochemistry (IC): 1:100-1:1,000

Note: This product is for research use only.

SUPPORT

SUPPORT@GENUINBIOTECH.COM
TEL: +1-540-855-7041

ORDERS

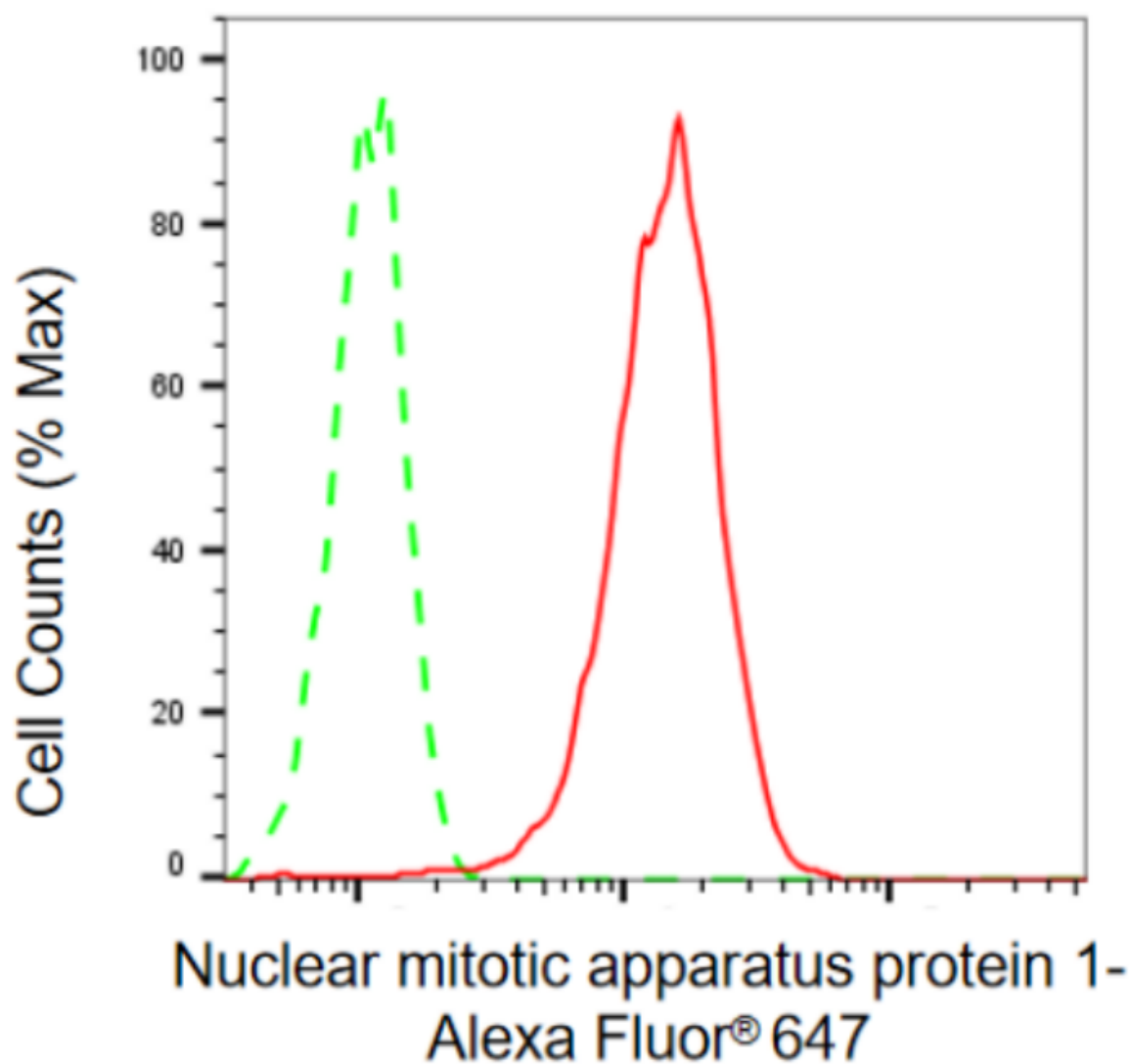
SALES@GENUINBIOTECH.COM
FAX: +1-540-855-7041

WWW.GENUINBIOTECH.COM

Anti-Nuclear Mitotic Apparatus Protein 1 Recombinant Rabbit Monoclonal Antibody

PAGE 2

Validation Data



Flow cytometric analysis of nuclear mitotic apparatus protein 1 expression in HepG2 cells using anti-nuclear mitotic apparatus protein 1 antibody (Cat#4404, 1:2,000). Green, isotype control; red, nuclear mitotic apparatus protein 1.

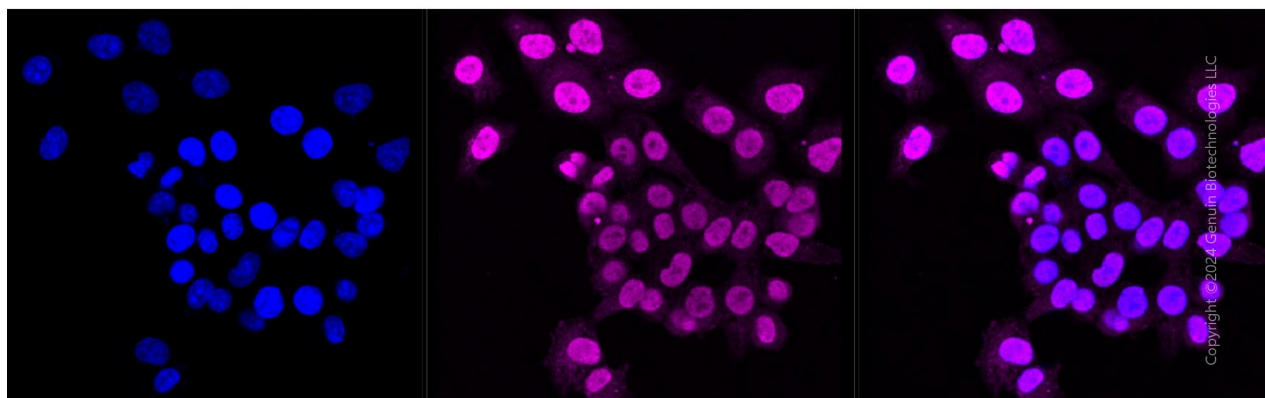
SUPPORT

SUPPORT@GENUINBIOTECH.COM
TEL: +1-540-855-7041

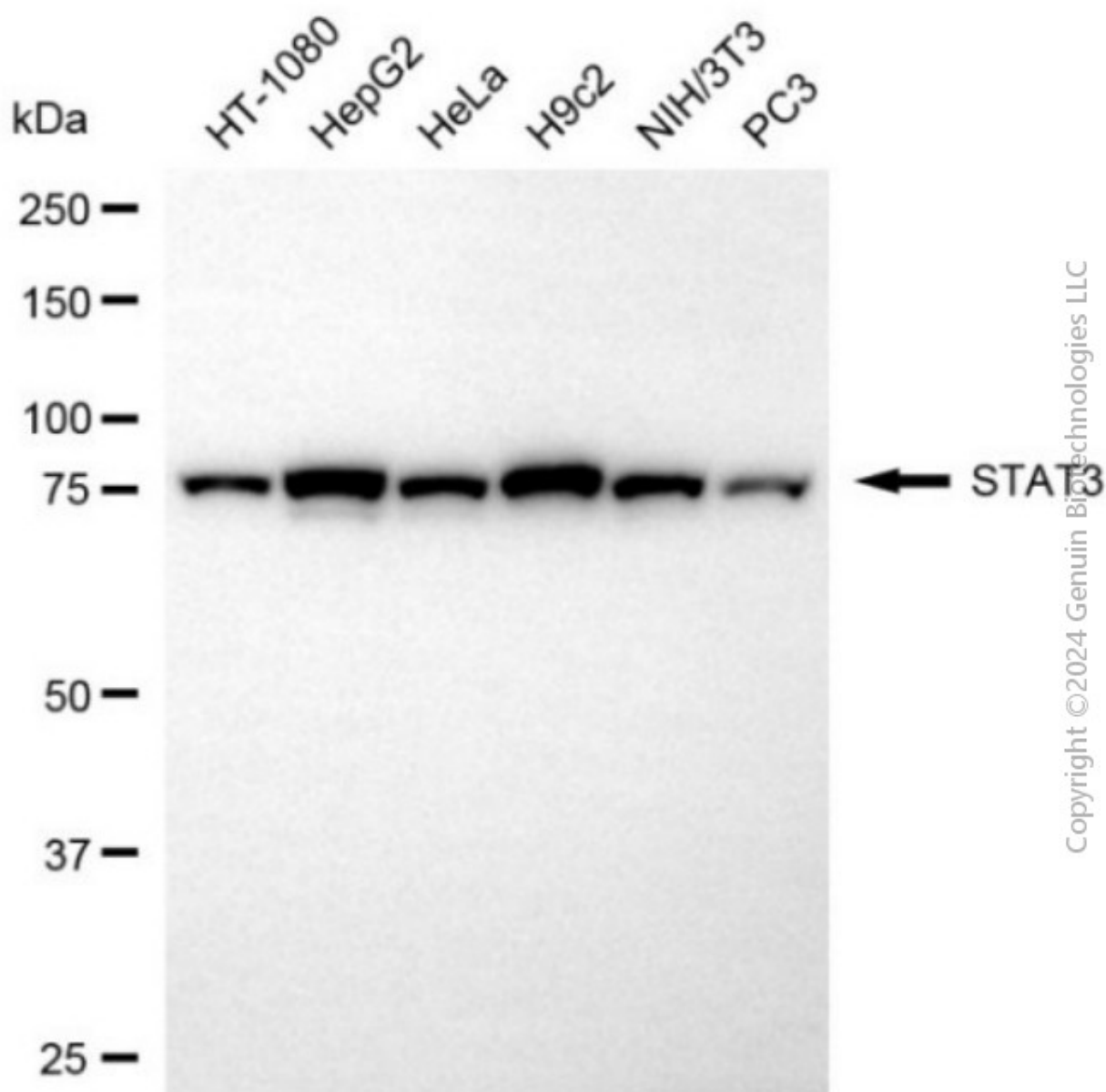
ORDERS

SALES@GENUINBIOTECH.COM
FAX: +1-540-855-7041

WWW.GENUINBIOTECH.COM



Immunocytochemical staining of HepG2 cells with anti-Nuclear mitotic apparatus protein 1 antibody (Cat#4404, 1:1,000). Nuclei were stained blue with DAPI; Nuclear mitotic apparatus protein 1 was stained magenta with Alexa Fluor® 647. Images were taken using Leica stellaris 5. Protein abundance based on laser Intensity and smart gain: High. Scale bar, 20 μ m.



Western blotting analysis using anti-nuclear mitotic apparatus protein 1 antibody (Cat#4404). Total cell lysates (30 μ g) from various cell lines were loaded and separated by SDS-PAGE. The blot was incubated with anti-nuclear mitotic apparatus protein 1 antibody (Cat#4404, 1:5,000) and HRP-conjugated goat anti-rabbit secondary antibody (Cat#201, 1:20,000) respectively. Image was developed using NaQTM ECL Substrate Kit (Cat#716).