

# Anti-FOXO1 Recombinant Rabbit Monoclonal Antibody



**Catalog #: 4406**

## Aliases

Forkhead Box O1; FOXO1A; FKH1; FKHR; Forkhead Box Protein O1A; Forkhead Box Protein O1; Forkhead, Drosophila, Homolog Of, In Rhabdomyosarcoma; Forkhead Homolog In Rhabdomyosarcoma; Forkhead In Rhabdomyosarcoma

## Background

Gene Name: FOXO1

NCBI Gene Entry: [2308](#)

UniProt Entry: [Q12778](#)

## Application Information

Molecular Weight: Predicted, 70 kDa; observed, 69-82 kDa

Clonality: Rabbit monoclonal antibody

Clone ID: 24GB11060

Species Reactivity: Human, mouse, rat

Applications Tested: Western blotting (WB), immunocytochemistry (IC)

## Immunogen

A synthesized peptide derived from human FOXO1

## Isotype

Rabbit IgG

## Storage Buffer

Supplied in PBS (pH 7.4) containing 50% glycerol, and 0.02% sodium azide.

## Storage

Store at -20 °C for one year.

## Recommended Dilutions

Western Blotting (WB): 1:1,000-1:5,000

Immunocytochemistry (IC): 1:100-1:1,000

**Note:** This product is for research use only.

## Validation Data

---

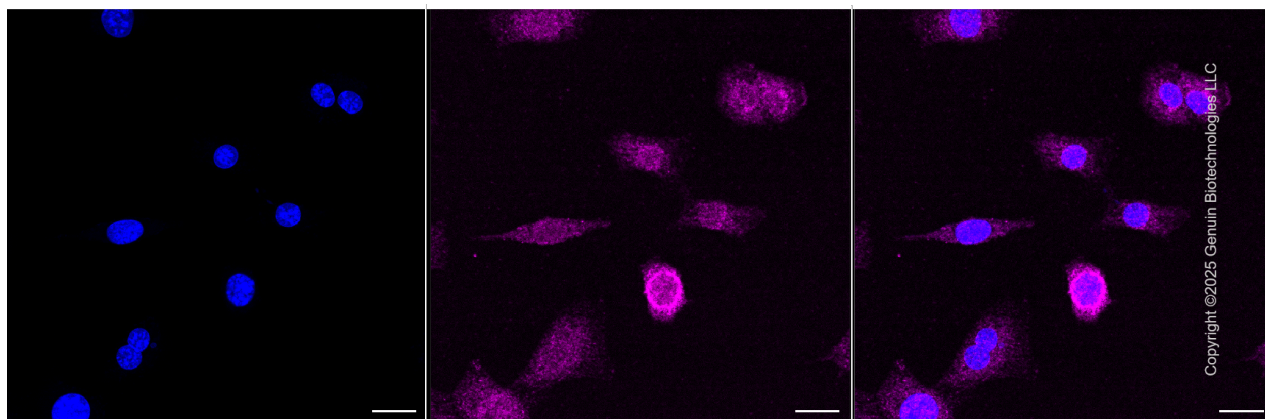
### SUPPORT

SUPPORT@GENUINBIOTECH.COM  
TEL: +1-540-855-7041

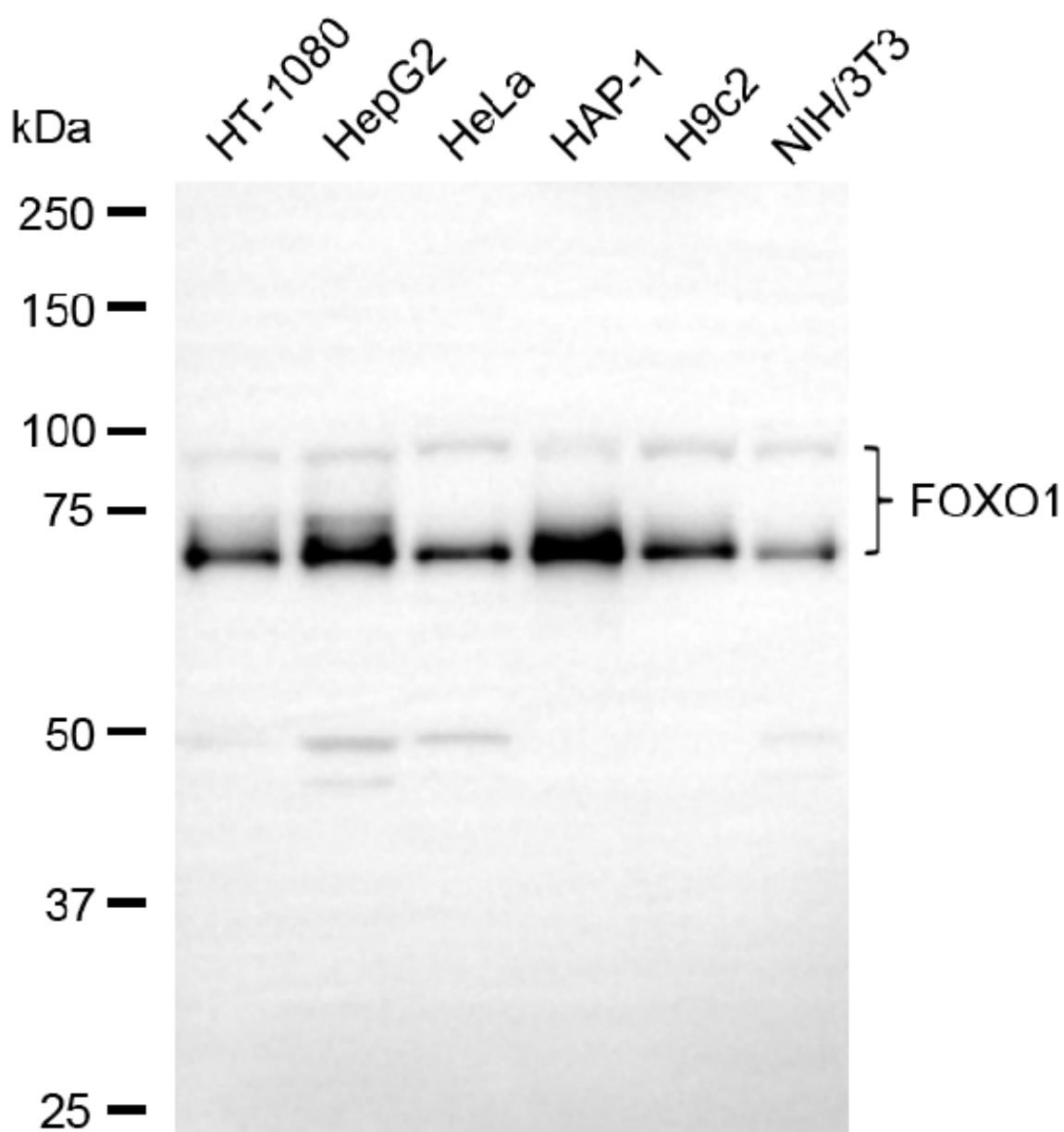
### ORDERS

SALES@GENUINBIOTECH.COM  
FAX: +1-540-855-7041

[WWW.GENUINBIOTECH.COM](http://WWW.GENUINBIOTECH.COM)



Immunocytochemical staining of C2C12 cells with anti-FOXO1 antibody (Cat#4406, 1:1,000), . Nuclei were stained blue with DAPI; FOXO1 was stained magenta with Alexa Fluor® 647. Images were taken using Leica stellaris 5. Protein abundance based on laser Intensity and smart gain: Low. Scale bar, 20  $\mu$ m.



Copyright ©2025 Genuin Biotechnologies LLC

Western blotting analysis using anti-FOXO1 antibody (Cat#4406). Total cell lysates (30  $\mu$ g) from various cell lines were loaded and separated by SDS-PAGE. The blot was incubated with anti-FOXO1 antibody (Cat#4406, 1:5,000) and HRP-conjugated goat anti-rabbit secondary antibody (Cat#201, 1:20,000) respectively. Image was developed using FeQ™ ECL Substrate Kit (Cat#226).