

Anti-MRAS Recombinant Rabbit Monoclonal Antibody



Catalog #: 4410

Aliases

MRAS; Muscle RAS Oncogene Homolog; RRAS3; R-RAS3; Ras-Related Protein R-Ras3; Ras-Related Protein M-Ras; M-RAS; Muscle And Microspikes RAS; EC 3.6.5.2; M-RAS; NS11

Background

Gene Name: MRAS

NCBI Gene Entry: [22808](#)

UniProt Entry: [O14807](#)

Application Information

Molecular Weight: Predicted, 24 kDa; observed, 24 kDa

Clonality: Rabbit monoclonal antibody

Clone ID: 24GB11080

Species Reactivity: Human, mouse, rat

Applications Tested: Western blotting (WB), flow cytometry (FCM)

Immunogen

A synthesized peptide derived from human Mras

Isotype

Rabbit IgG

Storage Buffer

Supplied in PBS (pH 7.4) containing 50% glycerol, and 0.02% sodium azide.

Storage

Store at -20 °C for one year.

Recommended Dilutions

Western Blotting (WB): 1:1,000-1:5,000

Flow Cytometry (FCM): 1:2,000

Note: This product is for research use only.

Validation Data

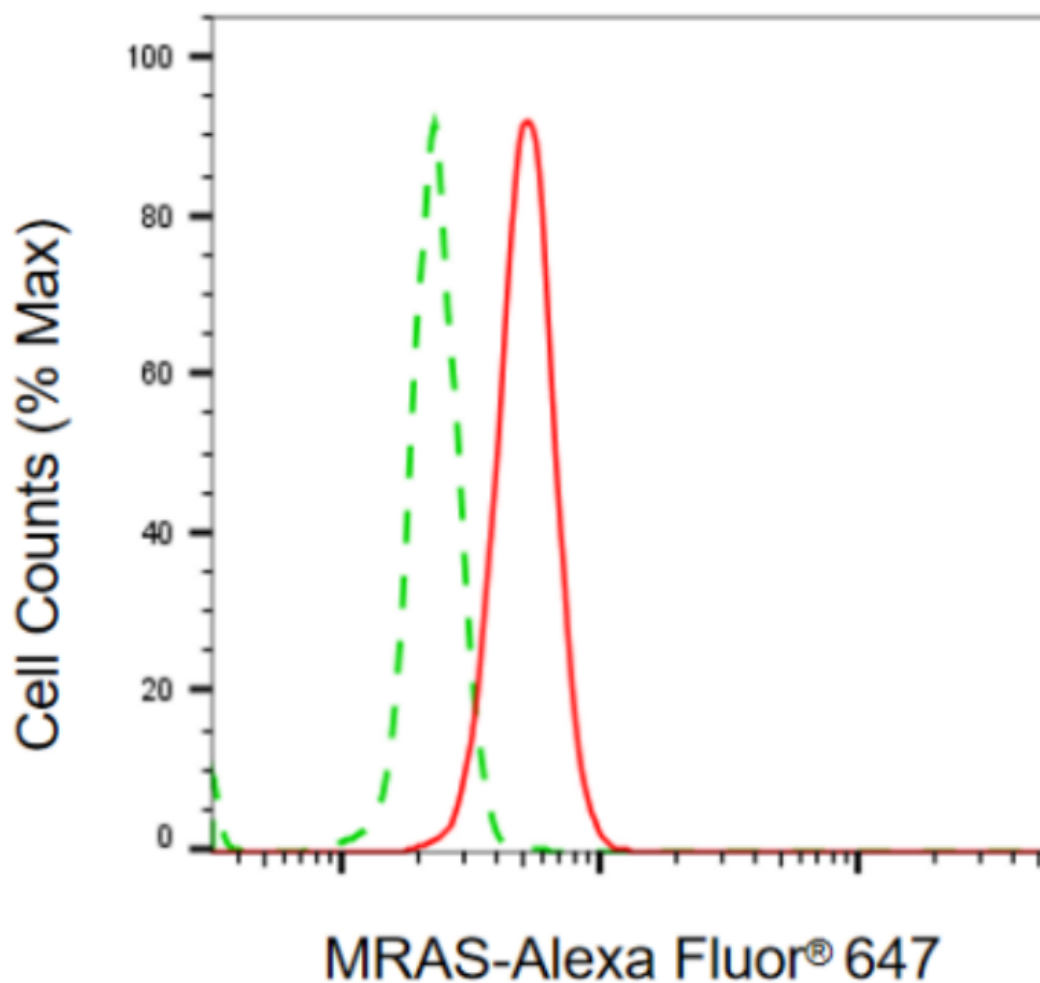
SUPPORT

SUPPORT@GENUINBIOTECH.COM
TEL: +1-540-855-7041

ORDERS

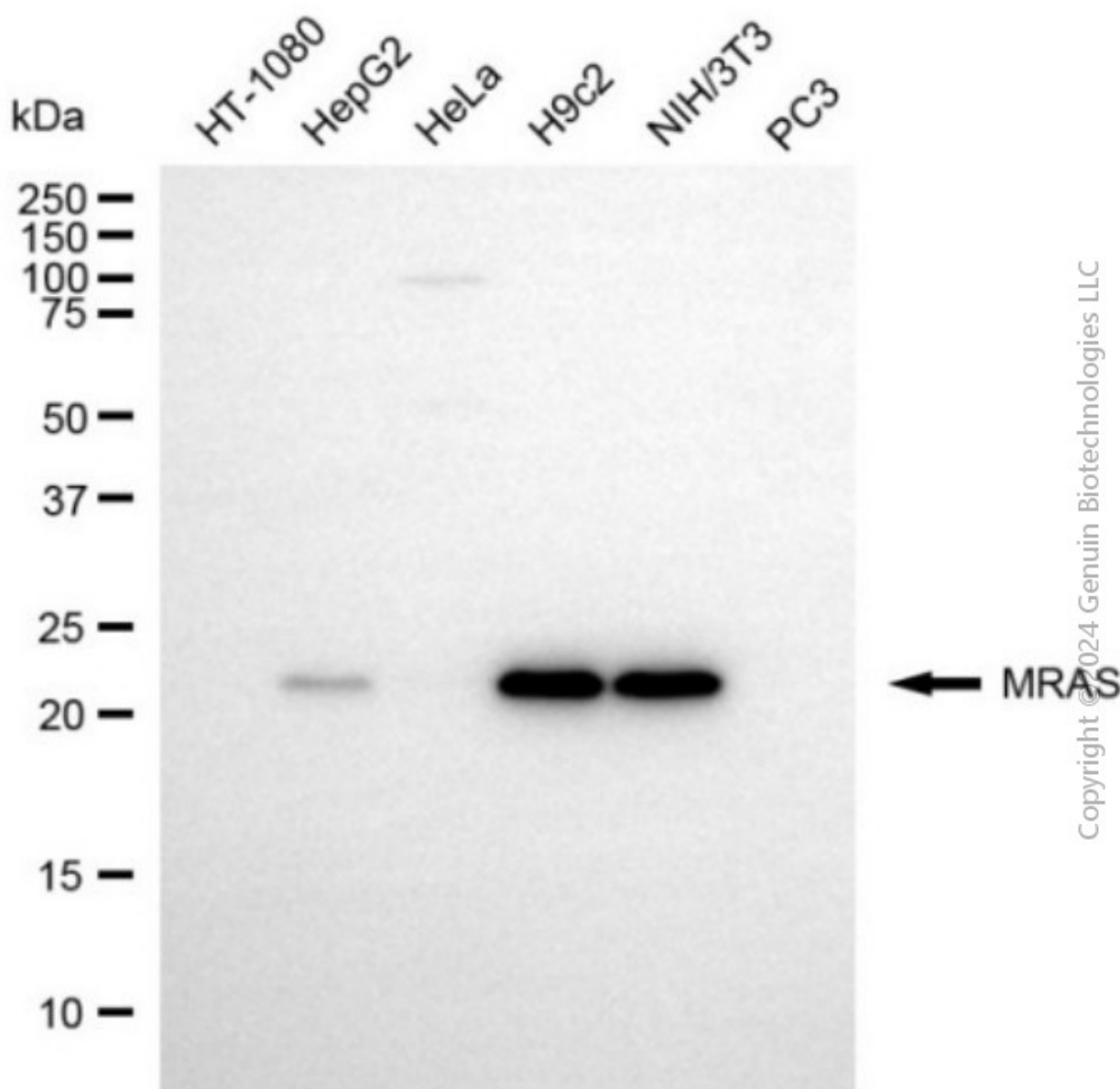
SALES@GENUINBIOTECH.COM
FAX: +1-540-855-7041

WWW.GENUINBIOTECH.COM



Copyright ©2024 Genuin Biotechnologies LLC

Flow cytometric analysis of MRAS expression in HSHC cells using anti-MRAS antibody (Cat#4410, 1:2,000). Green, isotype control; red, MRAS.



Western blotting analysis using anti-MRAS antibody (Cat#4410). Total cell lysates (30 μ g) from various cell lines were loaded and separated by SDS-PAGE. The blot was incubated with anti-MRAS antibody (Cat#4410, 1:5,000) and HRP-conjugated goat anti-rabbit secondary antibody (Cat#201, 1:20,000) respectively. Image was developed using NaQ™ ECL Substrate Kit (Cat#716).