

Anti-Intraflagellar transport 88 Recombinant Rabbit Monoclonal Antibody



Catalog #: 4416

Aliases

IFT88; Intraflagellar Transport 88; D13S1056E; TG737; TTC10; Recessive Polycystic Kidney Disease Protein Tg737 Homolog; Intraflagellar Transport Protein 88 Homolog; Tetratricopeptide Repeat Protein 10; Tetratricopeptide Repeat Domain 10; TPR Repeat Protein 10; Polaris Homolog; MGC26259; HTg737; Probe HTg737 (Polycystic Kidney Disease, Autosomal Recessive); Intraflagellar Transport 88 Homolog (Chlamydomonas); Intraflagellar Transport 88 Homolog; Testicular Tissue Protein Li 93; HTG737; Tg737; DAF19

Background

Gene Name: IFT88

NCBI Gene Entry: [8100](#)

UniProt Entry: [Q13099](#)

Application Information

Molecular Weight: Predicted, 94 kDa; observed, 75 kDa

Clonality: Rabbit monoclonal antibody

Clone ID: 24GB11110

Species Reactivity: Human, mouse, rat

Applications Tested: Western blotting (WB), flow cytometry (FCM), immunocytochemistry (IC)

Immunogen

A synthesized peptide derived from human IFT88

Isotype

Rabbit IgG

Storage Buffer

Supplied in PBS (pH 7.4) containing 50% glycerol, and 0.02% sodium azide.

Storage

Store at -20 °C for one year.

Recommended Dilutions

Western Blotting (WB): 1:1,000-1:5,000

Flow Cytometry (FCM): 1:2,000

Immunocytochemistry (IC): 1:100-1:1,000

SUPPORT

SUPPORT@GENUINBIOTECH.COM
TEL: +1-540-855-7041

ORDERS

SALES@GENUINBIOTECH.COM
FAX: +1-540-855-7041

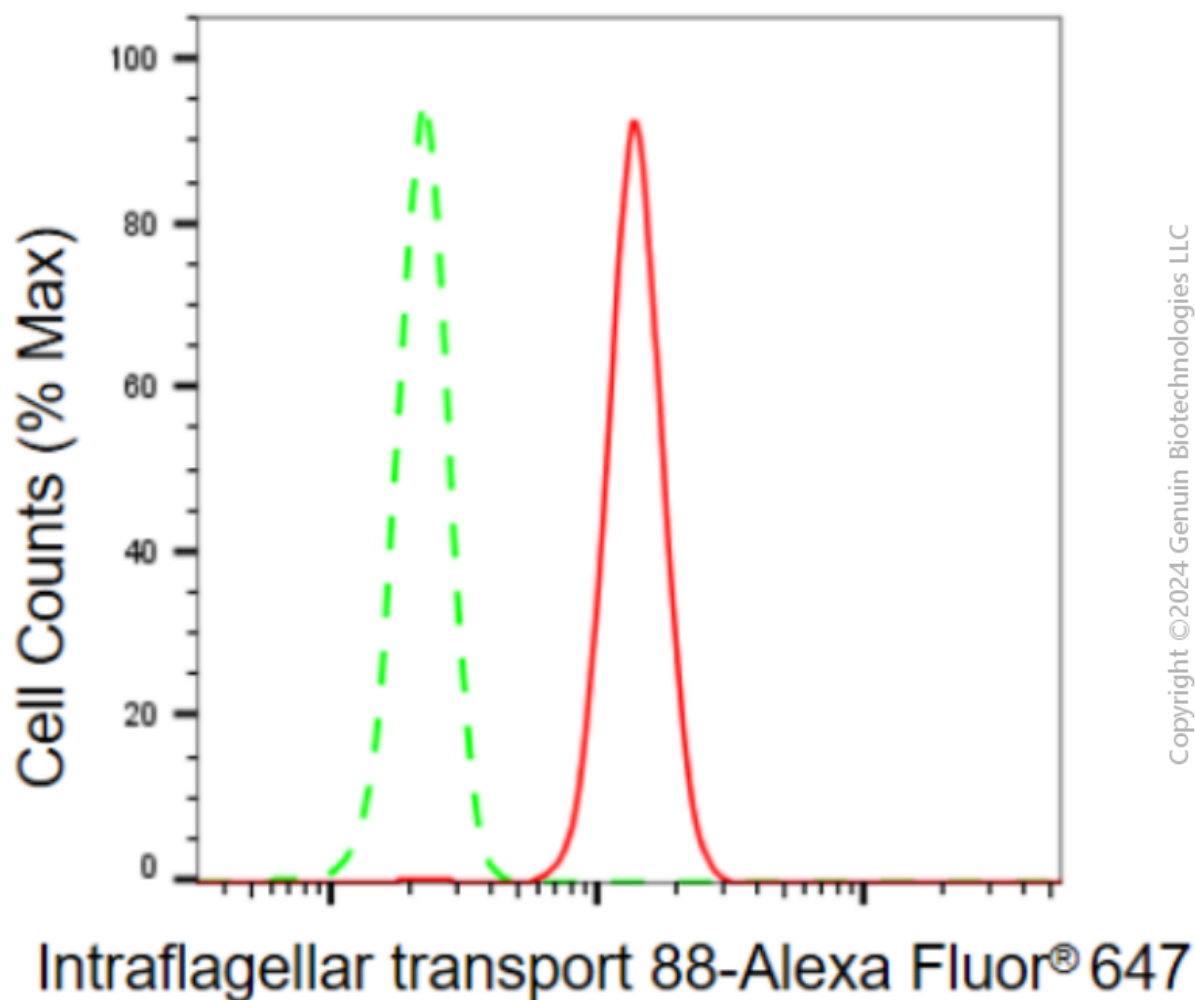
WWW.GENUINBIOTECH.COM

Anti-Intraflagellar transport 88 Recombinant Rabbit Monoclonal Antibody

PAGE 2

Note: This product is for research use only.

Validation Data



Flow cytometric analysis of intraflagellar transport 88 expression in HeLa cells using anti-intraflagellar transport 88 antibody (Cat#4416, 1:2,000). Green, isotype control; red, intraflagellar transport 88.

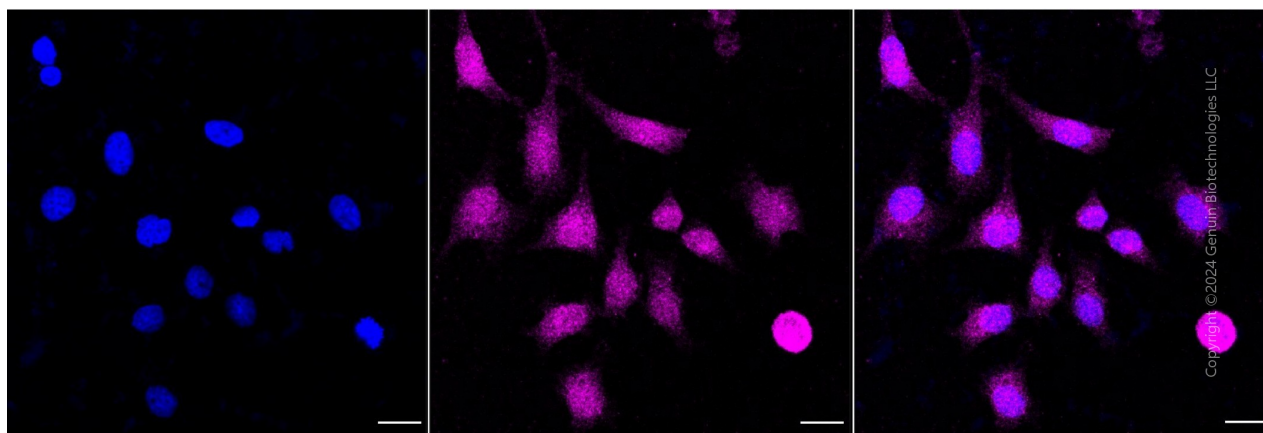
SUPPORT

SUPPORT@GENUINBIOTECH.COM
TEL: +1-540-855-7041

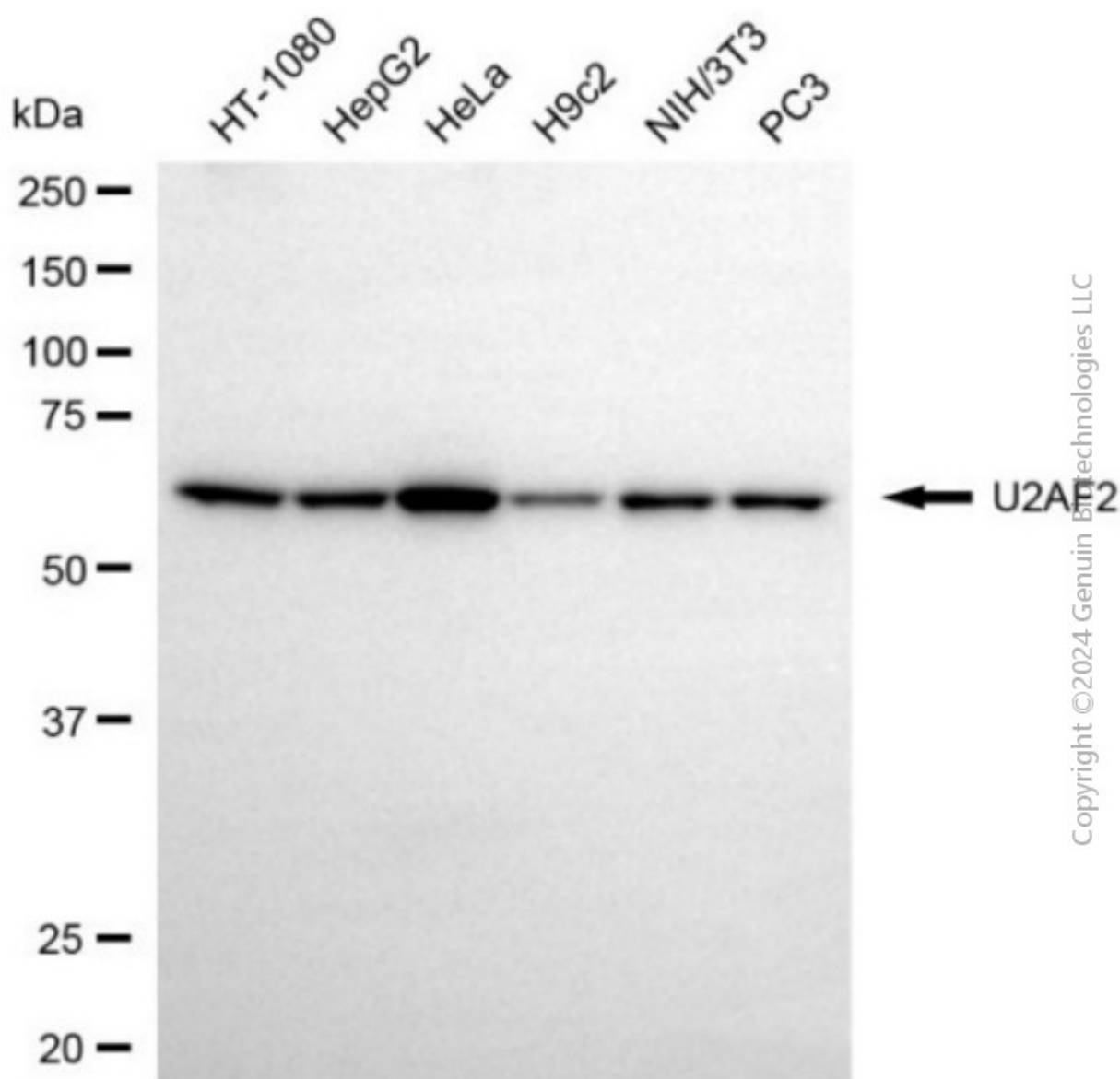
ORDERS

SALES@GENUINBIOTECH.COM
FAX: +1-540-855-7041

WWW.GENUINBIOTECH.COM



Immunocytochemical staining of HeLa cells with anti-Intraflagellar transport 88 antibody (Cat#4416, 1:1,000). Nuclei were stained blue with DAPI; Intraflagellar transport 88 was stained magenta with Alexa Fluor® 647. Images were taken using Leica stellaris 5. Protein abundance based on laser Intensity and smart gain: Medium. Scale bar, 20 μ m.



Copyright © 2024 Genuin Biotechnologies LLC

Western blotting analysis using anti-intraflagellar transport 88 antibody (Cat#4416). Total cell lysates (30 µg) from various cell lines were loaded and separated by SDS-PAGE. The blot was incubated with anti-intraflagellar transport 88 antibody (Cat#4416, 1:5,000) and HRP-conjugated goat anti-rabbit secondary antibody (Cat#201, 1:20,000) respectively. Image was developed using NaQ™ ECL Substrate Kit (Cat#716).

SUPPORT

SUPPORT@GENUINBIOTECH.COM
TEL: +1-540-855-7041

ORDERS

SALES@GENUINBIOTECH.COM
FAX: +1-540-855-7041

WWW.GENUINBIOTECH.COM