

Catalog #: 4418

Aliases

NSDHL; NAD(P) Dependent Steroid Dehydrogenase-Like; SDR31E1; XAP104; H105e3; Sterol-4-Alpha-Carboxylate 3-Dehydrogenase, Decarboxylating; Short Chain Dehydrogenase/Reductase Family 31E, Member 1; Protein H105e3; EC 1.1.1.170; 3beta-Hydroxysteroid-4alpha-Carboxylate 3-Dehydrogenase (Decarboxylating); NAD(P) Dependent Steroid Dehydrogenase-Like Protein Transcript; Epididymis Secretory Sperm Binding Protein; 3-Beta-Hydroxysteroid Dehydrogenase; H105E3

Background

Gene Name: NSDHL

NCBI Gene Entry: [50814](#)

UniProt Entry: [Q15738](#)

Application Information

Molecular Weight: Predicted, 42 kDa; observed, 38 kDa

Clonality: Rabbit monoclonal antibody

Clone ID: 24GB11120

Species Reactivity: Human

Applications Tested: Western blotting (WB), immunocytochemistry (IC), flow cytometry (FCM)

Immunogen

A synthesized peptide derived from human NSDHL

Isotype

Rabbit IgG

Storage Buffer

Supplied in PBS (pH 7.4) containing 50% glycerol, and 0.02% sodium azide.

Storage

Store at -20 °C for one year.

Recommended Dilutions

Western Blotting (WB): 1:1,000-1:5,000

Flow Cytometry (FCM): 1:2,000

Immunocytochemistry (IC): 1:200 - 1:1,000

SUPPORT

SUPPORT@GENUINBIOTECH.COM
TEL: +1-540-855-7041

ORDERS

SALES@GENUINBIOTECH.COM
FAX: +1-540-855-7041

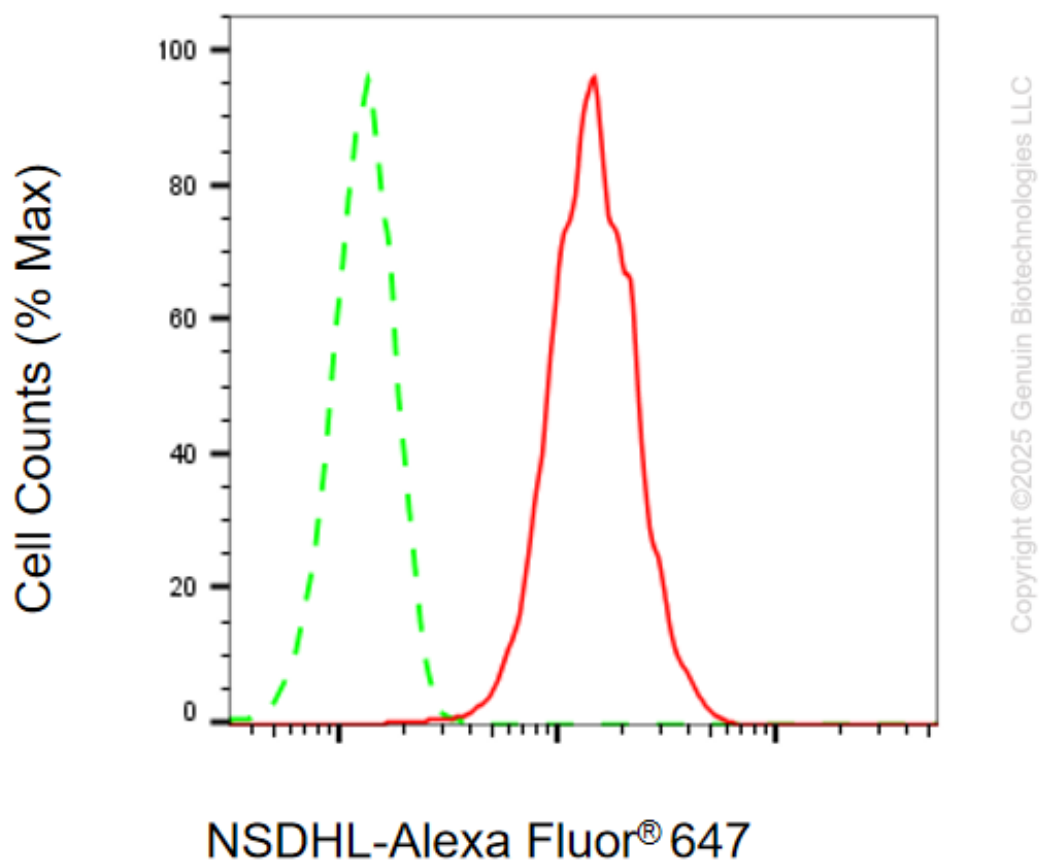
WWW.GENUINBIOTECH.COM

Anti-NSDHL Recombinant Rabbit Monoclonal Antibody

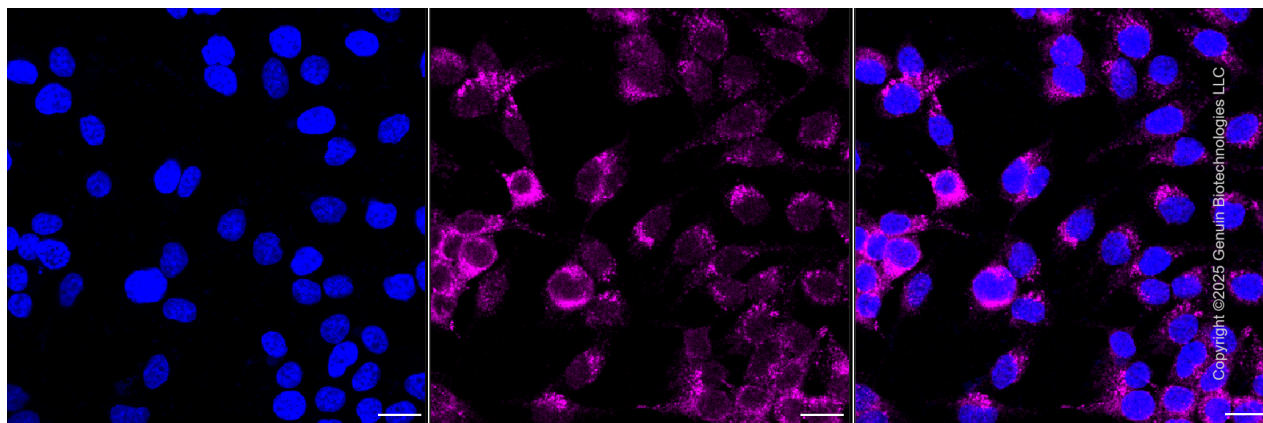
PAGE 2

Note: This product is for research use only.

Validation Data



Flow cytometric analysis of NSDHL expression in HeLa cells using anti-NSDHL antibody (Cat#4418, 1:2,000). Green, isotype control; red, NSDHL.



Immunocytochemical staining of HeLa cells with anti-NSDHL antibody (Cat#4418, 1:1,000) .

SUPPORT

SUPPORT@GENUINBIOTECH.COM
TEL: +1-540-855-7041

ORDERS

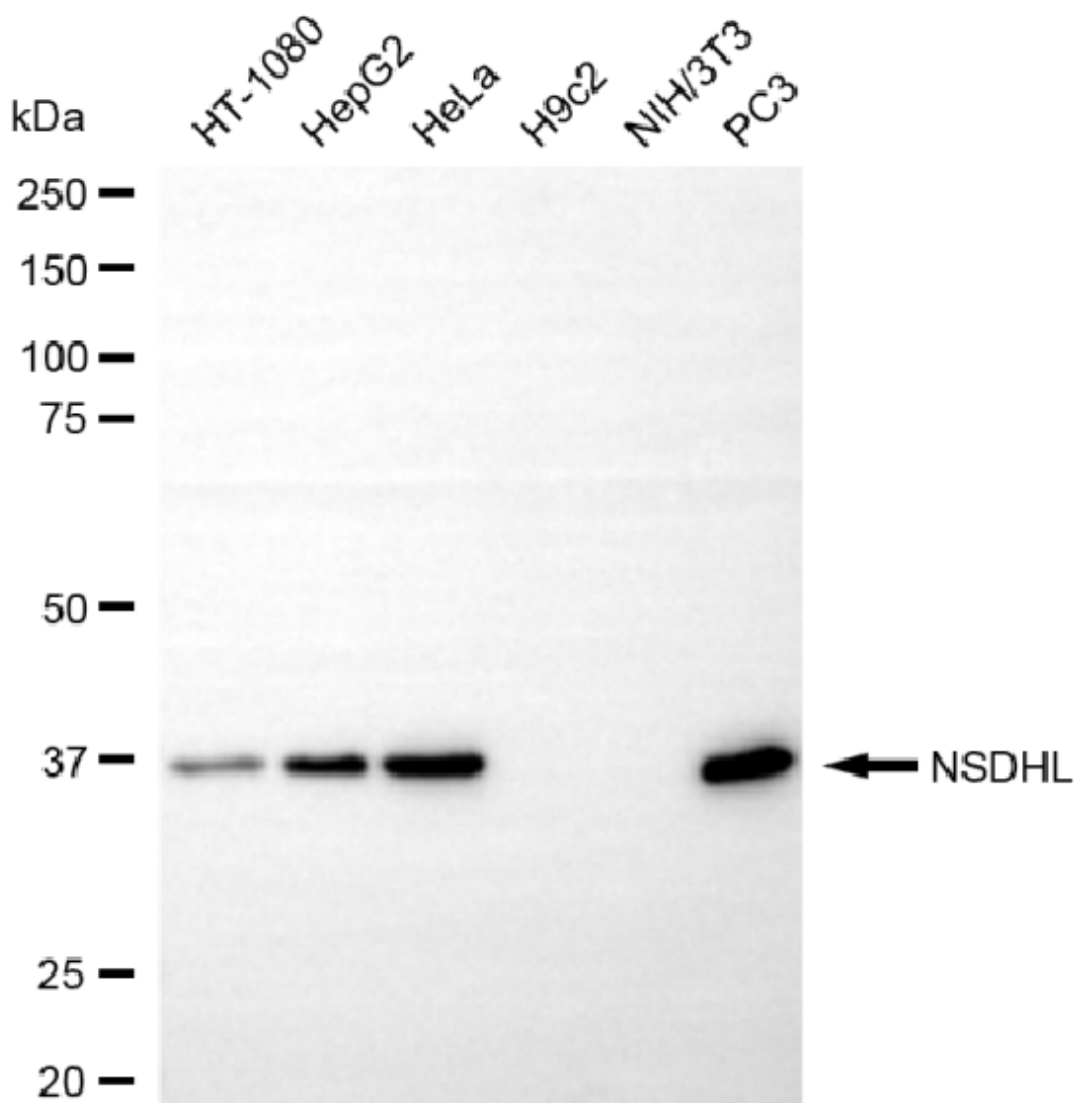
SALES@GENUINBIOTECH.COM
FAX: +1-540-855-7041

WWW.GENUINBIOTECH.COM

Anti-NSDHL Recombinant Rabbit Monoclonal Antibody

PAGE 3

Nuclei were stained blue with DAPI; NSDHL was stained magenta with Alexa Fluor® 647. Images were taken using Leica stellaris 5. Protein abundance based on laser Intensity and smart gain: Medium. Scale bar, 20 μ m.



Copyright ©2025 Genuin Biotechnologies LLC

Western blotting analysis using anti-NSDHL antibody (Cat#4418). Total cell lysates (30 μ g) from various cell lines were loaded and separated by SDS-PAGE. The blot was incubated with anti-NSDHL antibody (Cat#4418, 1:5,000) and HRP-conjugated goat anti-rabbit secondary antibody (Cat#201, 1:20,000) respectively. Image was developed using NaQ™ ECL Substrate Kit (Cat#716).

SUPPORT

SUPPORT@GENUINBIOTECH.COM
TEL: +1-540-855-7041

ORDERS

SALES@GENUINBIOTECH.COM
FAX: +1-540-855-7041

WWW.GENUINBIOTECH.COM