

Anti-MLD Recombinant Rabbit Monoclonal Antibody



Catalog #: 4420

Aliases

DEGS1; Delta 4-Desaturase, Sphingolipid 1; DES1; MLD; DEGS-1; FADS7; Cell Migration-Inducing Gene 15 Protein; Sphingolipid Delta(4)-Desaturase DES1; Sphingolipid Delta(4)-Desaturase 1; Dihydroceramide Desaturase 1; Membrane Lipid Desaturase; Retinol Isomerase; Des-1; Degenerative Spermatocyte Homolog 1, Lipid Desaturase (Drosophila); Degenerative Spermatocyte Homolog 1, Lipid Desaturase; Degenerative Spermatocyte Homolog, Lipid Desaturase; Membrane Fatty Acid (Lipid) Desaturase; Degenerative Spermatocyte Homolog 1; Migration-Inducing Gene 15 Protein; Sphingolipid Delta 4 Desaturase; Dihydroceramide Desaturase-1; EC 1.14.19.17; EC 5.2.1.-; HLD18; MIG15; DES-1; DEGS

Background

Gene Name: DEGS1

NCBI Gene Entry: [8560](#)

UniProt Entry: [O15121](#)

Application Information

Molecular Weight: Predicted, 38 kDa; observed, 34 kDa

Clonality: Rabbit monoclonal antibody

Clone ID: 24GB11130

Species Reactivity: Human

Applications Tested: Western blotting (WB), flow cytometry (FCM), immunocytochemistry (IC)

Immunogen

A synthesized peptide derived from human MLD

Isotype

Rabbit IgG

Storage Buffer

Supplied in PBS (pH 7.4) containing 50% glycerol, and 0.02% sodium azide.

Storage

Store at -20 °C for one year.

Recommended Dilutions

Western Blotting (WB): 1:1,000-1:5,000

SUPPORT

SUPPORT@GENUINBIOTECH.COM
TEL: +1-540-855-7041

ORDERS

SALES@GENUINBIOTECH.COM
FAX: +1-540-855-7041

WWW.GENUINBIOTECH.COM

Anti-MLD Recombinant Rabbit Monoclonal Antibody

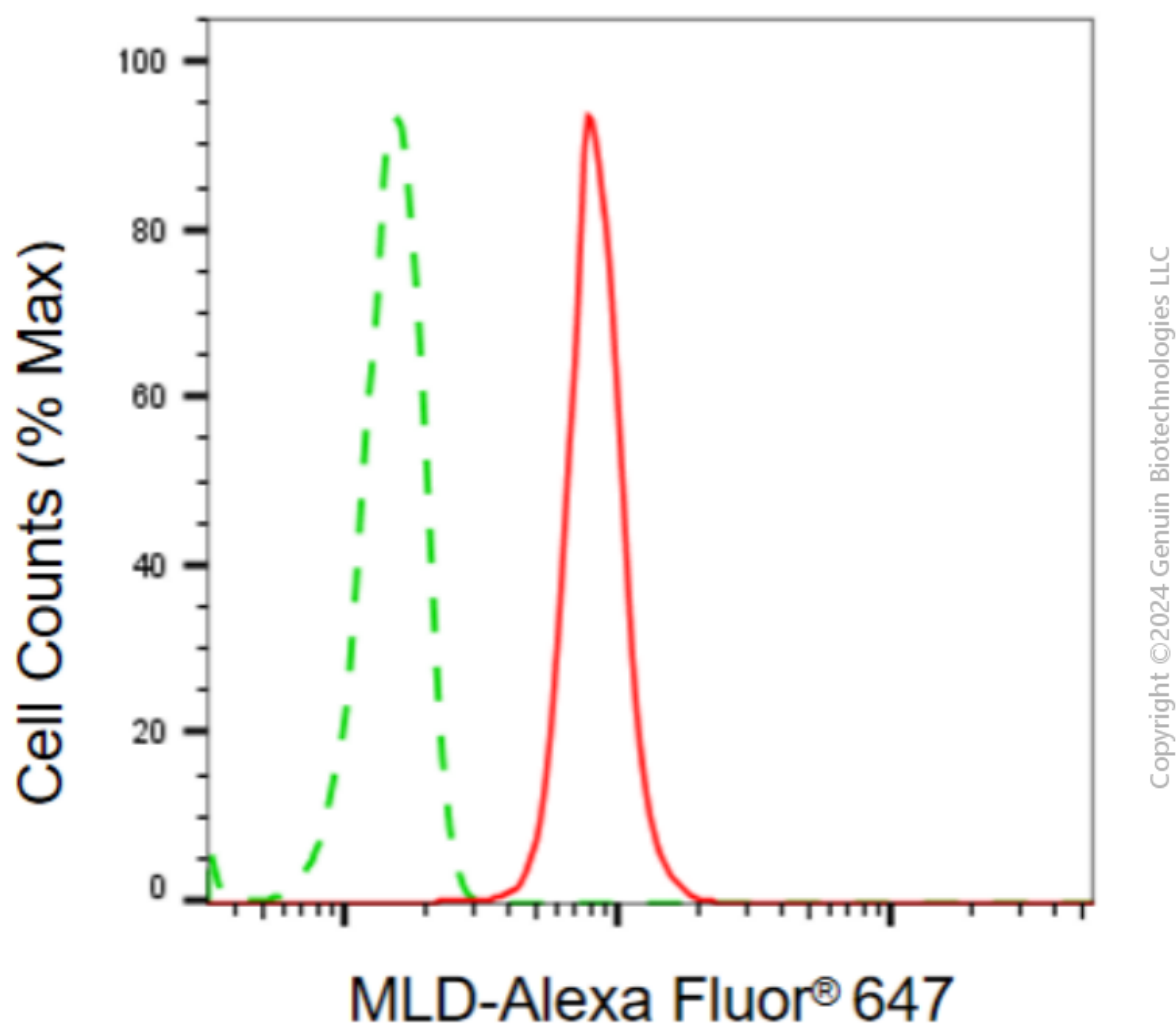
PAGE 2

Flow Cytometry (FCM): 1:2,000

Immunocytochemistry (IC): 1:100-1:1,000

Note: This product is for research use only.

Validation Data



Flow cytometric analysis of MLD expression in HT-1080 cells using anti-MLD antibody (Cat#4420, 1:2,000). Green, isotype control; red, MLD.

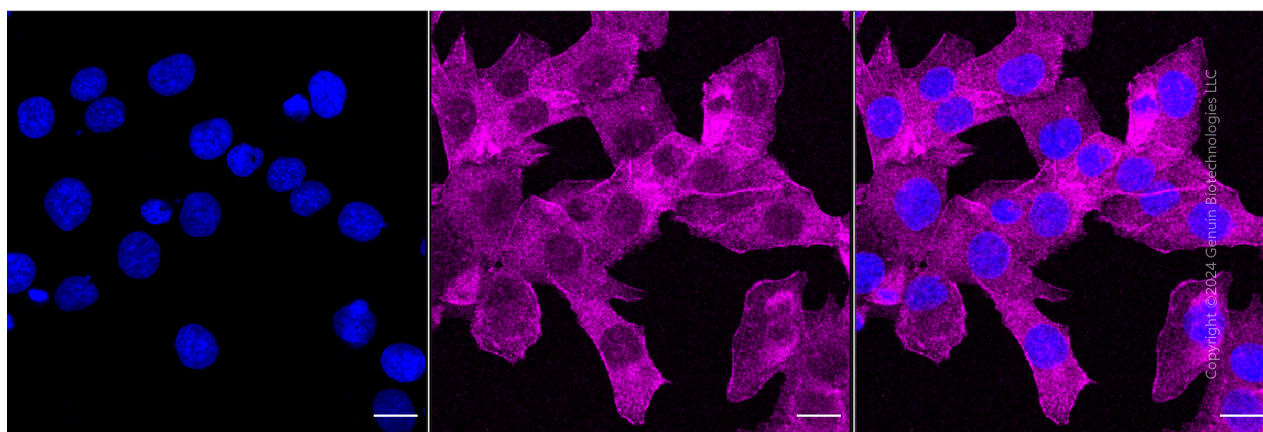
SUPPORT

SUPPORT@GENUINBIOTECH.COM
TEL: +1-540-855-7041

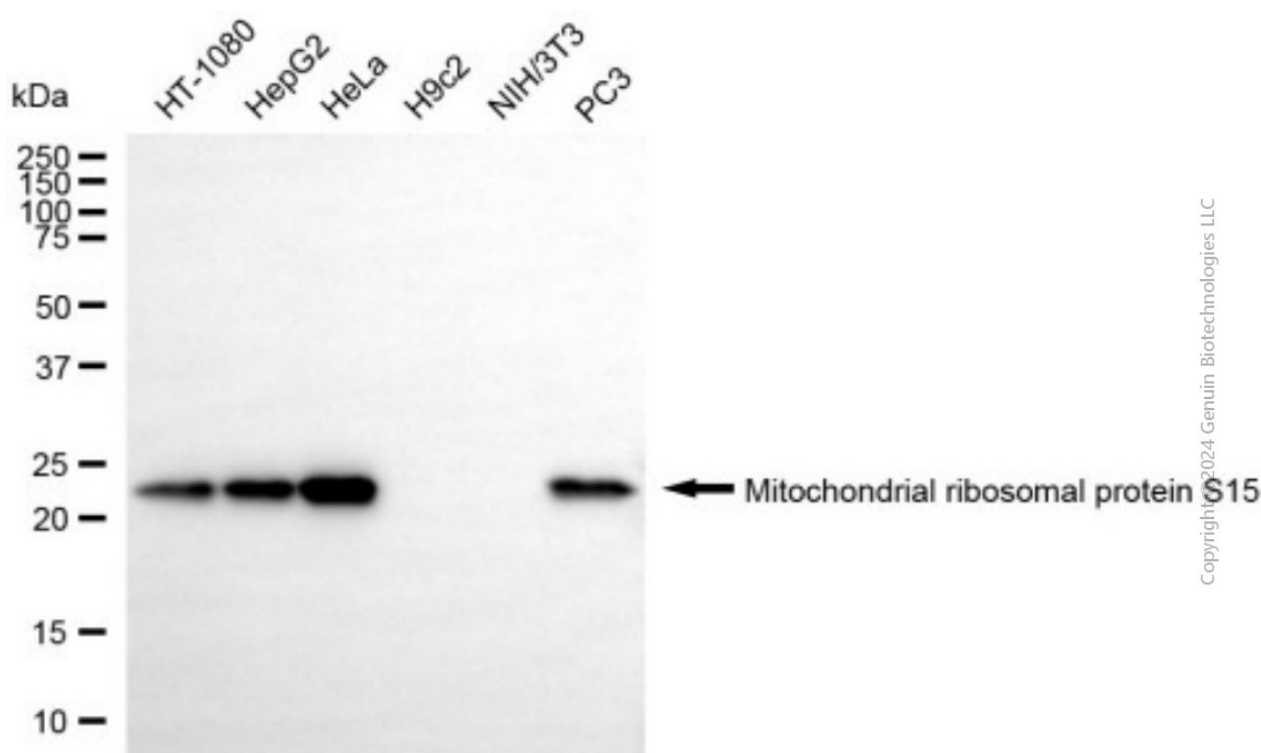
ORDERS

SALES@GENUINBIOTECH.COM
FAX: +1-540-855-7041

WWW.GENUINBIOTECH.COM



Immunocytochemical staining of HT-1080 cells with anti-MLD antibody (Cat#4420, 1:1,000). Nuclei were stained blue with DAPI; MLD was stained magenta with Alexa Fluor® 647. Images were taken using Leica stellaris 5. Protein abundance based on laser Intensity and smart gain: Medium. Scale bar, 20 μ m.



Western blotting analysis using anti-MLD antibody (Cat#4420). Total cell lysates (30 μ g) from various cell lines were loaded and separated by SDS-PAGE. The blot was incubated with anti-MLD antibody (Cat#4420, 1:5,000) and HRP-conjugated goat anti-rabbit secondary antibody (Cat#201, 1:20,000) respectively. Image was developed using NaQ™ ECL Substrate Kit (Cat#716).