

# Anti-IQGAP2 Recombinant Rabbit Monoclonal Antibody



**Catalog #: 4423**

## Aliases

IQGAP2; IQ Motif Containing GTPase Activating Protein 2; Ras GTPase-Activating-Like Protein  
IQGAP2

## Background

Gene Name: IQGAP2

NCBI Gene Entry: [10788](#)

UniProt Entry: [Q13576](#)

## Application Information

Molecular Weight: Predicted, 181 kDa; observed, 181 kDa

Clonality: Rabbit monoclonal antibody

Clone ID: 24GB11145

Species Reactivity: Human, rat

Applications Tested: Western blotting (WB)

## Immunogen

A synthesized peptide derived from human IQGAP2

## Isotype

Rabbit IgG

## Storage Buffer

Supplied in PBS (pH 7.4) containing 50% glycerol, and 0.02% sodium azide.

## Storage

Store at -20 °C for one year.

## Recommended Dilutions

Western Blotting (WB): 1:1,000-1:5,000

**Note:** This product is for research use only.

## Validation Data

---

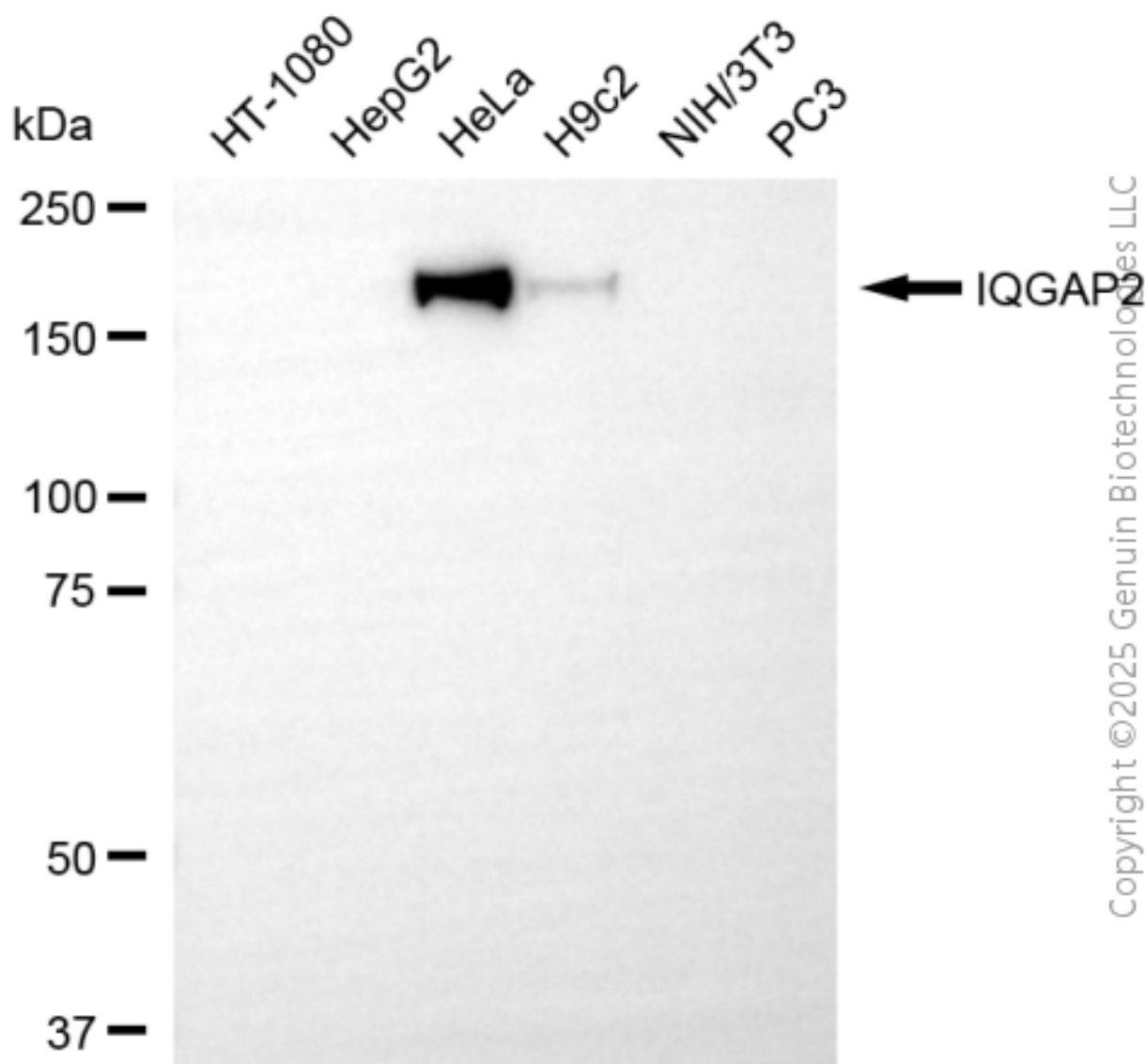
### SUPPORT

SUPPORT@GENUINBIOTECH.COM  
TEL: +1-540-855-7041

### ORDERS

SALES@GENUINBIOTECH.COM  
FAX: +1-540-855-7041

[WWW.GENUINBIOTECH.COM](http://WWW.GENUINBIOTECH.COM)



Western blotting analysis using anti-IQGAP2 antibody (Cat#4423). Total cell lysates (30 µg) from various cell lines were loaded and separated by SDS-PAGE. The blot was incubated with anti-IQGAP2 antibody (Cat#4423, 1:5,000) and HRP-conjugated goat anti-rabbit secondary antibody (Cat#201, 1:20,000) respectively. Image was developed using NaQ™ ECL Substrate Kit (Cat#716).