

Anti-Peptidase D Recombinant Rabbit Monoclonal Antibody



Catalog #: 4431

Aliases

PEPD; Peptidase D; Xaa-Pro Dipeptidase; Imidodipeptidase; Proline Dipeptidase; X-Pro Dipeptidase; Prolidase; Testicular Tissue Protein Li 138; Aminoacyl-L-Proline Hydrolase; EC 3.4.13.9; PROLIDASE; PRD

Background

Gene Name: PEPD

NCBI Gene Entry: [5184](#)

UniProt Entry: [P12955](#)

Application Information

Molecular Weight: Predicted, 55 kDa; observed, 55 kDa

Clonality: Rabbit monoclonal antibody

Clone ID: 24GB11185

Species Reactivity: Human

Applications Tested: Western blotting (WB), flow cytometry (FCM), immunocytochemistry (IC)

Immunogen

A synthesized peptide derived from human PRD

Isotype

Rabbit IgG

Storage Buffer

Supplied in PBS (pH 7.4) containing 50% glycerol, and 0.02% sodium azide.

Storage

Store at -20 °C for one year.

Recommended Dilutions

Western Blotting (WB): 1:1,000-1:5,000

Flow Cytometry (FCM): 1:2,000

Immunocytochemistry (IC): 1:100-1:1,000

Note: This product is for research use only.

SUPPORT

SUPPORT@GENUINBIOTECH.COM
TEL: +1-540-855-7041

ORDERS

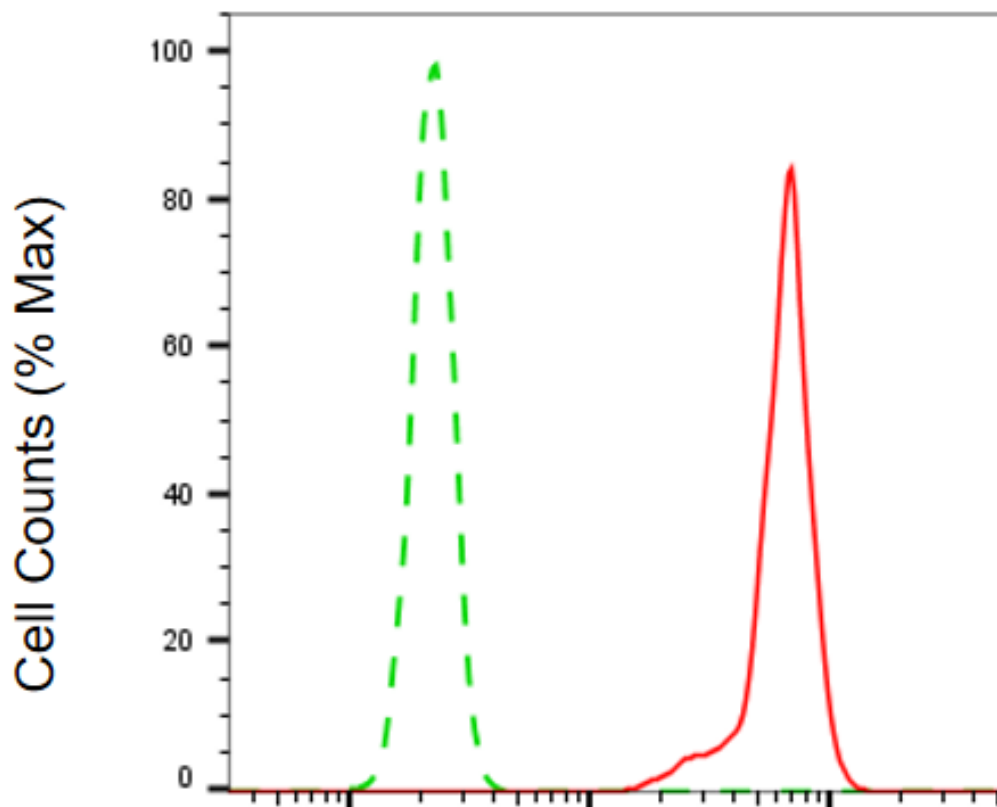
SALES@GENUINBIOTECH.COM
FAX: +1-540-855-7041

WWW.GENUINBIOTECH.COM

Anti-Peptidase D Recombinant Rabbit Monoclonal Antibody

PAGE 2

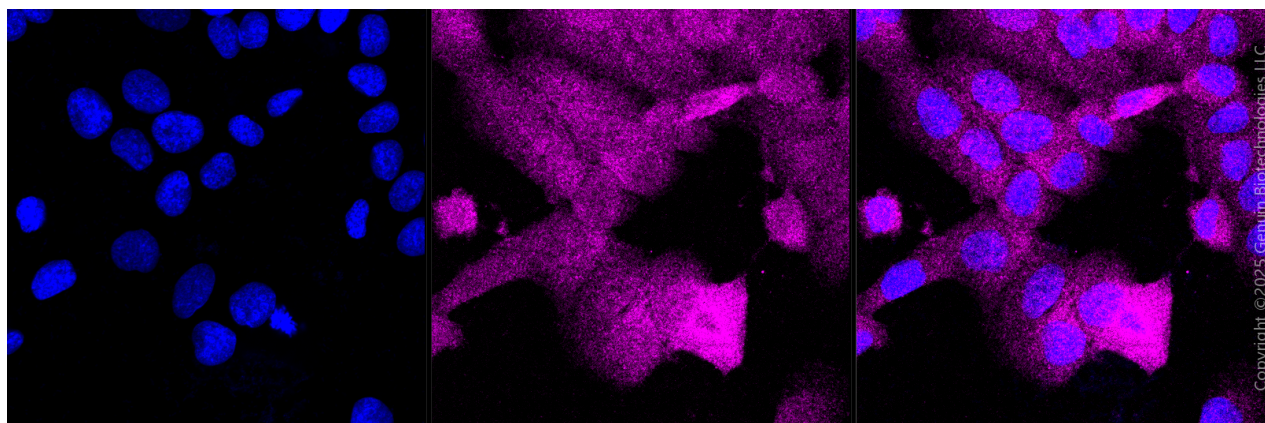
Validation Data



Copyright ©2025 Genuin Biotechnologies LLC

Peptidase D-Alexa Fluor® 647

Flow cytometric analysis of Peptidase D expression in HT-1080 cells using anti-Peptidase D antibody (Cat#4431, 1:2,000). Green, isotype control; red, Peptidase D.



Copyright ©2025 Genuin Biotechnologies LLC

Immunocytochemical staining of HT-1080 cells with anti-Peptidase D antibody (Cat#4431,

SUPPORT

SUPPORT@GENUINBIOTECH.COM
TEL: +1-540-855-7041

ORDERS

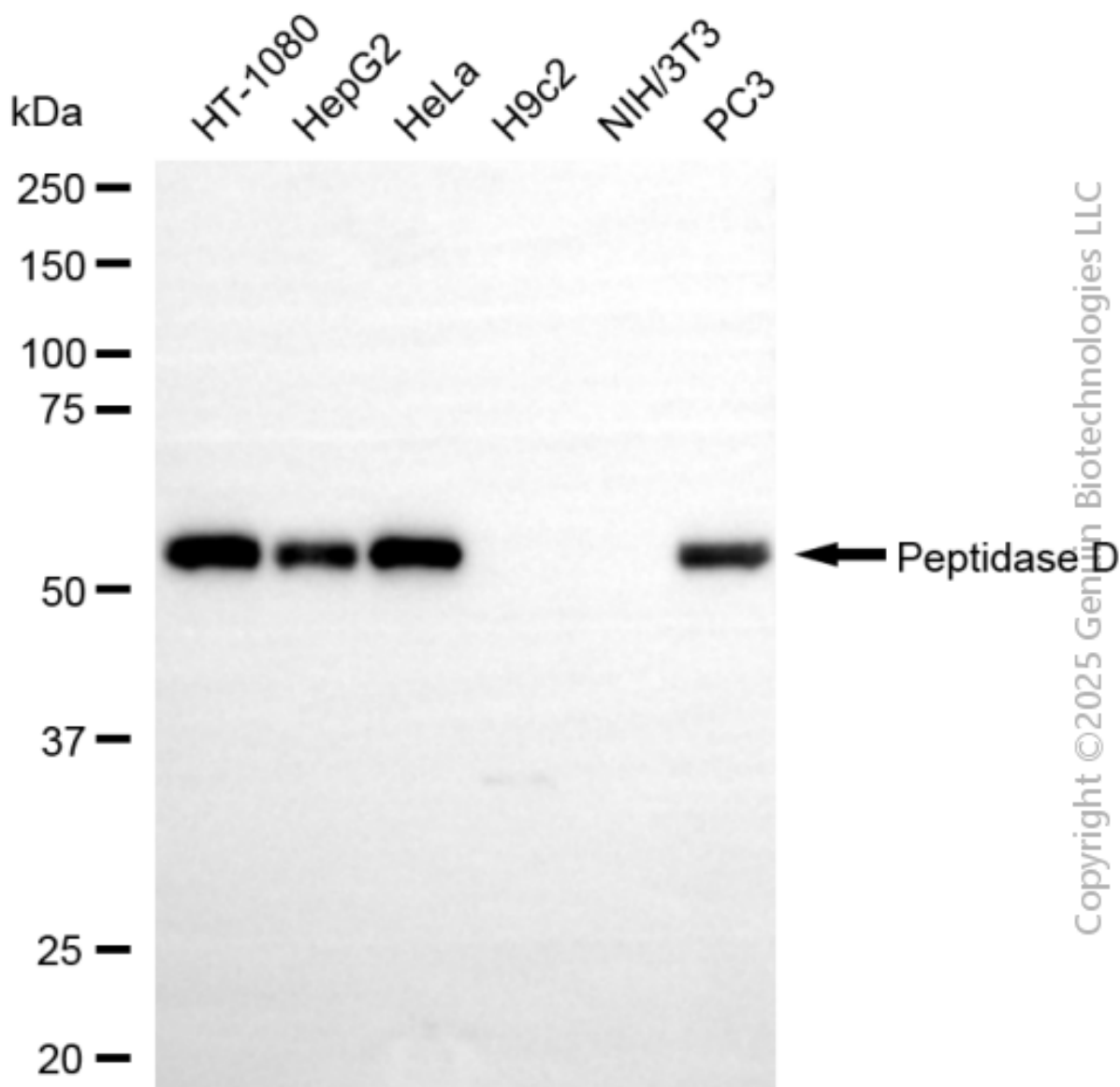
SALES@GENUINBIOTECH.COM
FAX: +1-540-855-7041

WWW.GENUINBIOTECH.COM

Anti-Peptidase D Recombinant Rabbit Monoclonal Antibody

PAGE 3

1:1,000). Nuclei were stained blue with DAPI; Peptidase D was stained magenta with Alexa Fluor® 647. Images were taken using Leica stellaris 5. Protein abundance based on laser Intensity and smart gain: Medium. Scale bar, 20 μ m.



Western blotting analysis using anti-peptidase D antibody (Cat#4431). Total cell lysates (30 μ g) from various cell lines were loaded and separated by SDS-PAGE. The blot was incubated with anti-peptidase D antibody (Cat#4431, 1:5,000) and HRP-conjugated goat anti-rabbit secondary antibody (Cat#201, 1:20,000) respectively. Image was developed using NaQ™ ECL Substrate Kit (Cat#716).

SUPPORT

SUPPORT@GENUINBIOTECH.COM
TEL: +1-540-855-7041

ORDERS

SALES@GENUINBIOTECH.COM
FAX: +1-540-855-7041

WWW.GENUINBIOTECH.COM