

# Anti-Transmembrane Protein 43 Recombinant Rabbit Monoclonal Antibody



**Catalog #: 4432**

## Aliases

TMEM43; Transmembrane Protein 43; LUMA; DKFZp586G1919; MGC3222; ARVD5; Arrhythmogenic Right Ventricular Dysplasia 5; EDMD7; AUNA2; Protein LUMA; ARVC5; AUNA3; EDMD7

## Background

Gene Name: TMEM43

NCBI Gene Entry: [79188](#)

UniProt Entry: [Q9BTV4](#)

## Application Information

Molecular Weight: Predicted, 45 kDa; observed, 42 kDa

Clonality: Rabbit monoclonal antibody

Clone ID: 24GB11190

Species Reactivity: Human, mouse, rat

Applications Tested: Western blotting (WB), flow cytometry (FCM), immunocytochemistry (IC)

## Immunogen

A synthesized peptide derived from human TMEM43

## Isotype

Rabbit IgG

## Storage Buffer

Supplied in PBS (pH 7.4) containing 50% glycerol, and 0.02% sodium azide.

## Storage

Store at -20 °C for one year.

## Recommended Dilutions

Western Blotting (WB): 1:1,000-1:5,000

Flow Cytometry (FCM): 1:2,000

Immunocytochemistry (IC): 1:100-1:1,000

**Note:** This product is for research use only.

---

### SUPPORT

SUPPORT@GENUINBIOTECH.COM  
TEL: +1-540-855-7041

### ORDERS

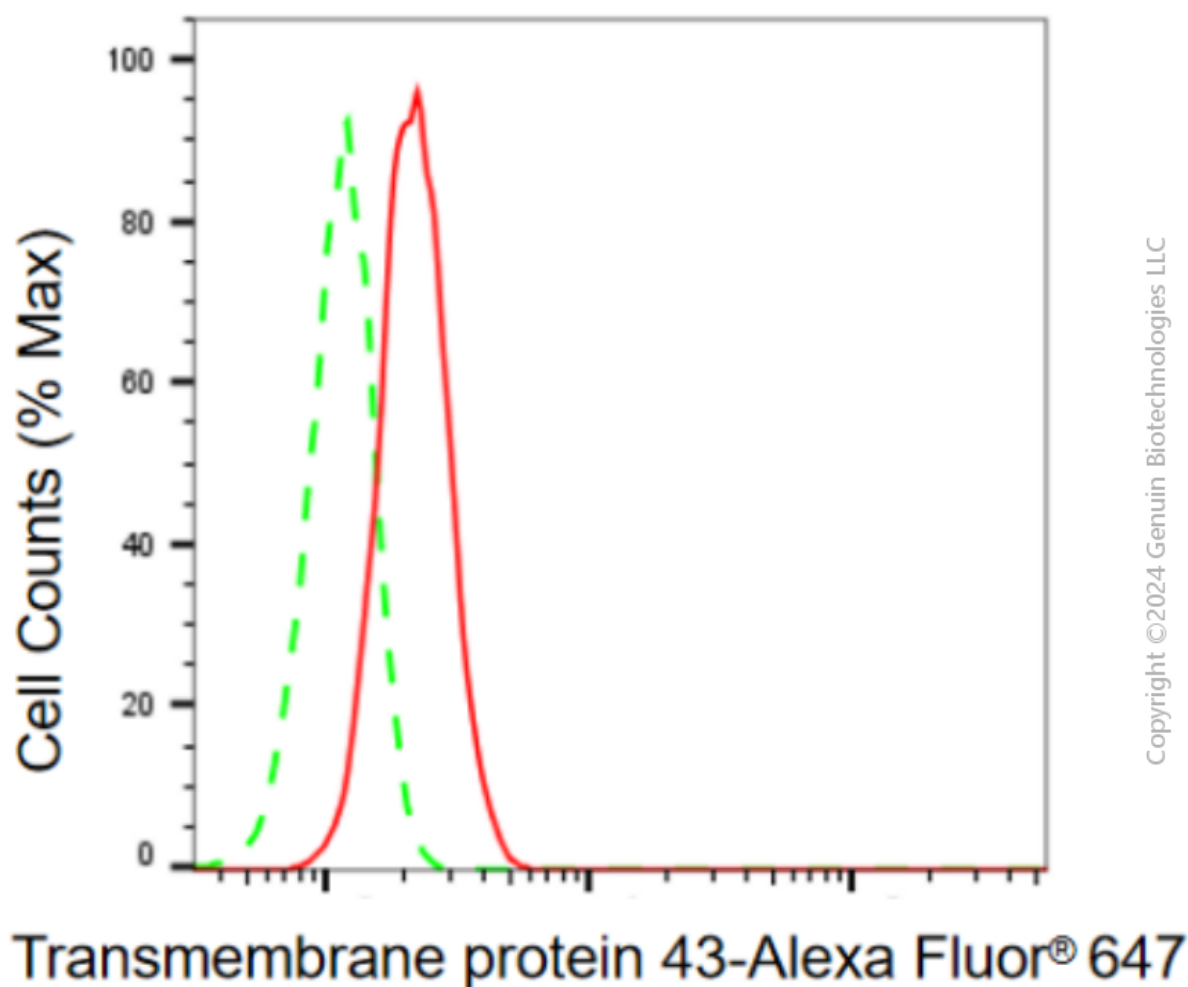
SALES@GENUINBIOTECH.COM  
FAX: +1-540-855-7041

[WWW.GENUINBIOTECH.COM](http://WWW.GENUINBIOTECH.COM)

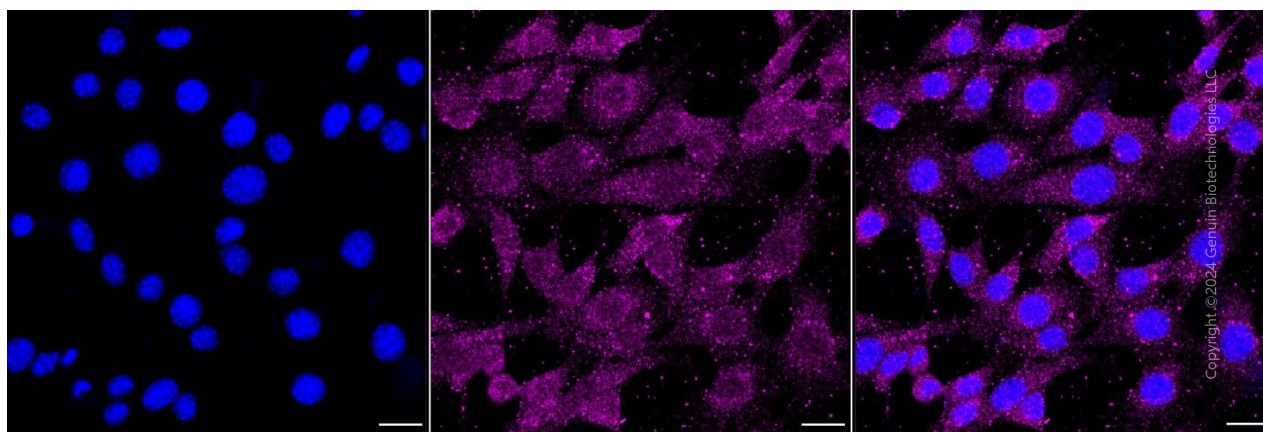
# Anti-Transmembrane Protein 43 Recombinant Rabbit Monoclonal Antibody

PAGE 2

## Validation Data



Flow cytometric analysis of transmembrane protein 43 expression in C2C12 cells using anti-transmembrane protein 43 antibody (Cat#4432, 1:2,000). Green, isotype control; red, transmembrane protein 43.



### SUPPORT

SUPPORT@GENUINBIOTECH.COM  
TEL: +1-540-855-7041

### ORDERS

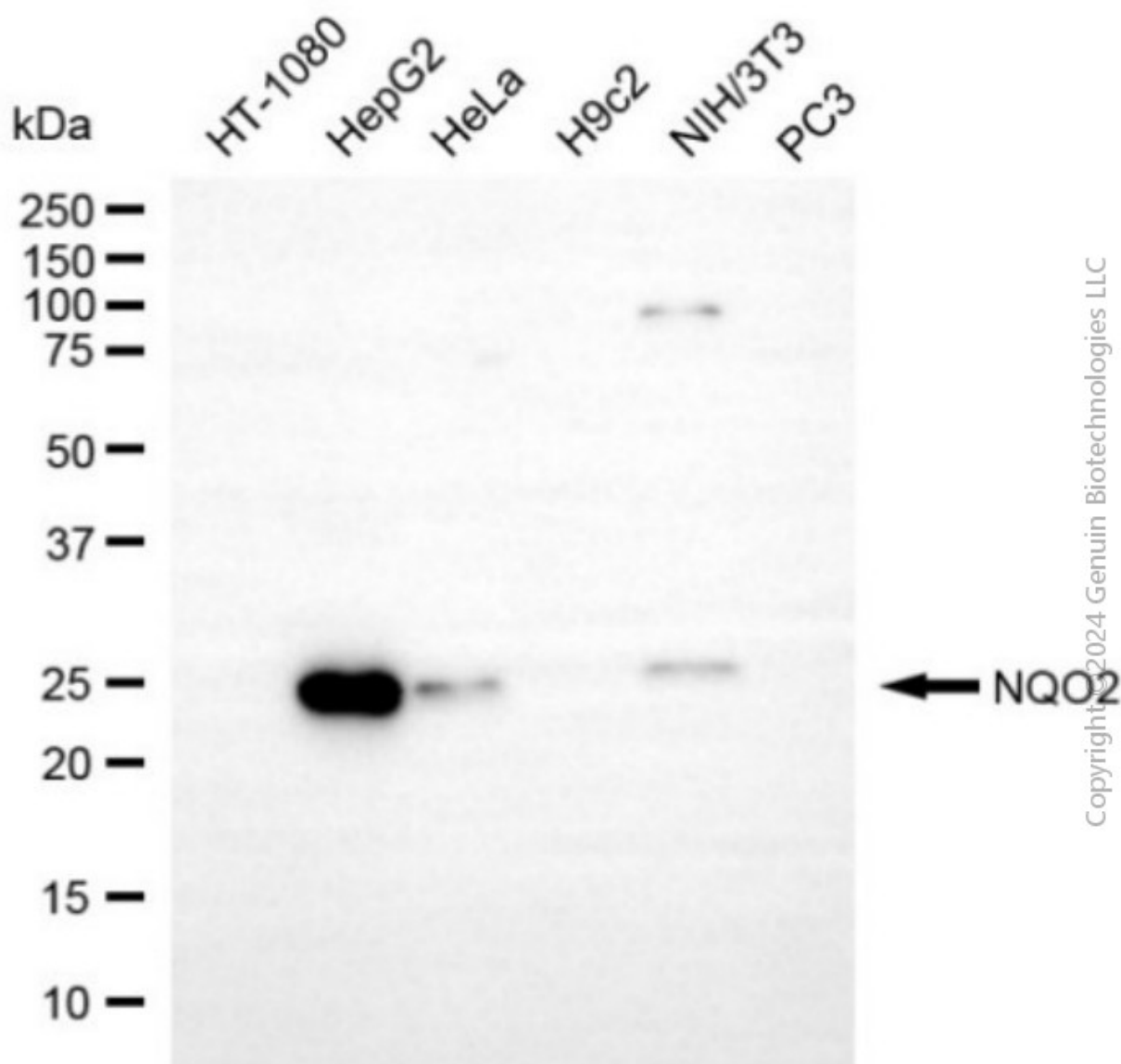
SALES@GENUINBIOTECH.COM  
FAX: +1-540-855-7041

WWW.GENUINBIOTECH.COM

## Anti-Transmembrane Protein 43 Recombinant Rabbit Monoclonal Antibody

PAGE 3

Immunocytochemical staining of C2C12 cells with anti-Transmembrane protein 43 antibody (Cat#4432, 1:1,000). Nuclei were stained blue with DAPI; Transmembrane protein 43 was stained magenta with Alexa Fluor® 647. Images were taken using Leica stellaris 5. Protein abundance based on laser Intensity and smart gain: Medium. Scale bar, 20 µm.



Western blotting analysis using anti-transmembrane protein 43 antibody (Cat#4432). Total cell lysates (30 µg) from various cell lines were loaded and separated by SDS-PAGE. The blot was incubated with anti-transmembrane protein 43 antibody (Cat#4432, 1:5,000) and HRP-conjugated goat anti-rabbit secondary antibody (Cat#201, 1:20,000) respectively. Image was developed using NaQ™ ECL Substrate Kit (Cat#716).

### SUPPORT

SUPPORT@GENUINBIOTECH.COM  
TEL: +1-540-855-7041

### ORDERS

SALES@GENUINBIOTECH.COM  
FAX: +1-540-855-7041

WWW.GENUINBIOTECH.COM