

Anti-Nesprin3 Recombinant Rabbit Monoclonal Antibody



Catalog #: 4435

Aliases

SYNE3; Spectrin Repeat Containing Nuclear Envelope Family Member 3; Nesprin-3; LINC00341; NET53; Long Intergenic Non-Protein Coding RNA 341; Nuclear Envelope Spectrin Repeat Protein 3; KASH Domain-Containing Protein 3; NCRNA00341; C14orf139; FLJ25605; C14orf49; Nesp3; KASH3; Chromosome 14 Open Reading Frame 139; Chromosome 14 Open Reading Frame 49; Uncharacterized Protein C14orf113; Non-Protein Coding RNA 341; C14ORF139; NESPRIN-3; C14ORF49; NESP3

Background

Gene Name: SYNE3

NCBI Gene Entry: [161176](#)

UniProt Entry: [Q6ZMZ3](#)

Application Information

Molecular Weight: Predicted, 112 kDa; observed, 100 kDa

Clonality: Rabbit monoclonal antibody

Clone ID: 24GB11205

Species Reactivity: Human

Applications Tested: Western blotting (WB), immunocytochemistry (IC)

Immunogen

A synthesized peptide derived from human Nesprin3

Isotype

Rabbit IgG

Storage Buffer

Supplied in PBS (pH 7.4) containing 50% glycerol, and 0.02% sodium azide.

Storage

Store at -20 °C for one year.

Recommended Dilutions

Western Blotting (WB): 1:1,000-1:5,000

Immunocytochemistry (IC): 1:100-1:1,000

SUPPORT

SUPPORT@GENUINBIOTECH.COM
TEL: +1-540-855-7041

ORDERS

SALES@GENUINBIOTECH.COM
FAX: +1-540-855-7041

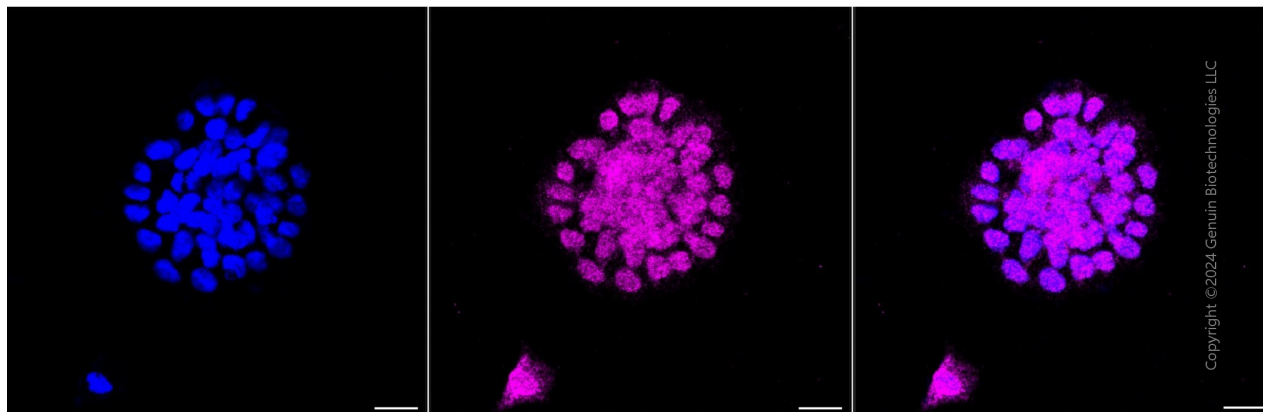
WWW.GENUINBIOTECH.COM

Anti-Nesprin3 Recombinant Rabbit Monoclonal Antibody

PAGE 2

Note: This product is for research use only.

Validation Data



Immunocytochemical staining of HAP-1 cells with anti-Nesprin3 antibody (Cat#4435, 1:1,000). Nuclei were stained blue with DAPI; Nesprin3 was stained magenta with Alexa Fluor® 647. Images were taken using Leica stellaris 5. Protein abundance based on laser Intensity and smart gain: Low. Scale bar, 20 μ m.

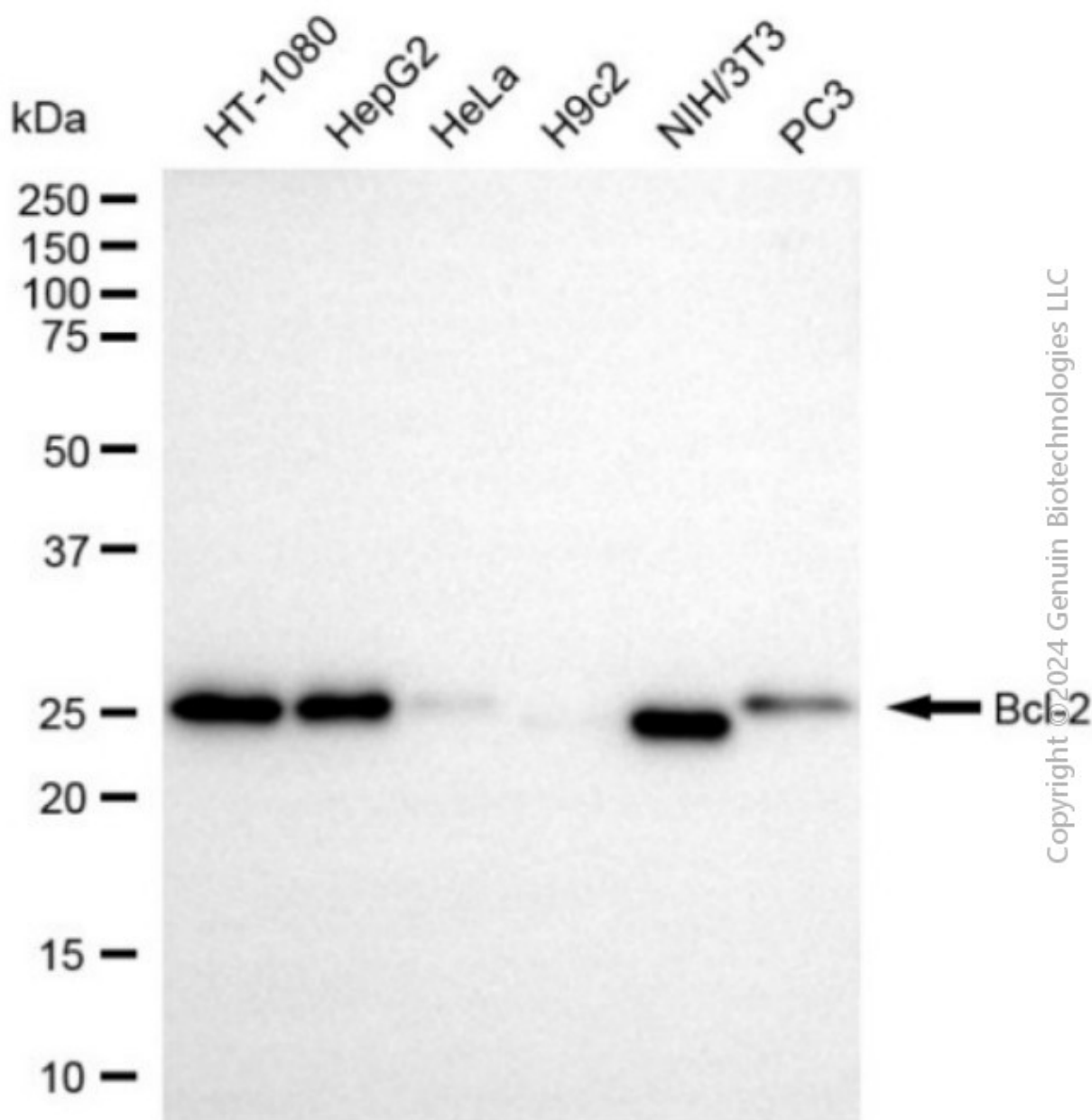
SUPPORT

SUPPORT@GENUINBIOTECH.COM
TEL: +1-540-855-7041

ORDERS

SALES@GENUINBIOTECH.COM
FAX: +1-540-855-7041

WWW.GENUINBIOTECH.COM



Western blotting analysis using anti-nesprin3 antibody (Cat#4435). Total cell lysates (30 µg) from various cell lines were loaded and separated by SDS-PAGE. The blot was incubated with anti-nesprin3 antibody (Cat#4435, 1:5,000) and HRP-conjugated goat anti-rabbit secondary antibody (Cat#201, 1:20,000) respectively. Image was developed using FeQ™ ECL Substrate Kit (Cat#226).