

# Anti-SEC24D Recombinant Rabbit Monoclonal Antibody



**Catalog #: 4436**

## Aliases

SEC24D; SEC24 Homolog D, COPII Coat Complex Component; KIAA0755; Protein Transport Protein Sec24D; SEC24-Related Protein D; SEC24 (S. Cerevisiae) Related Gene Family, Member D; SEC24 Family, Member D (S. Cerevisiae); SEC24 Related Gene Family, Member D; SEC24 Family Member D; CLCRP2

## Background

Gene Name: SEC24D

NCBI Gene Entry: [9871](#)

UniProt Entry: [O94855](#)

## Application Information

Molecular Weight: Predicted, 113 kDa; observed, 113 kDa

Clonality: Rabbit monoclonal antibody

Clone ID: 24GB11210

Species Reactivity: Human, mouse, rat

Applications Tested: Western blotting (WB), flow cytometry (FCM), immunocytochemistry (IC)

## Immunogen

A synthesized peptide derived from human SEC24D

## Isotype

Rabbit IgG

## Storage Buffer

Supplied in PBS (pH 7.4) containing 50% glycerol, and 0.02% sodium azide.

## Storage

Store at -20 °C for one year.

## Recommended Dilutions

Western Blotting (WB): 1:1,000-1:5,000

Flow Cytometry (FCM): 1:2,000

Immunocytochemistry (IC): 1:100-1:1,000

---

### SUPPORT

SUPPORT@GENUINBIOTECH.COM  
TEL: +1-540-855-7041

### ORDERS

SALES@GENUINBIOTECH.COM  
FAX: +1-540-855-7041

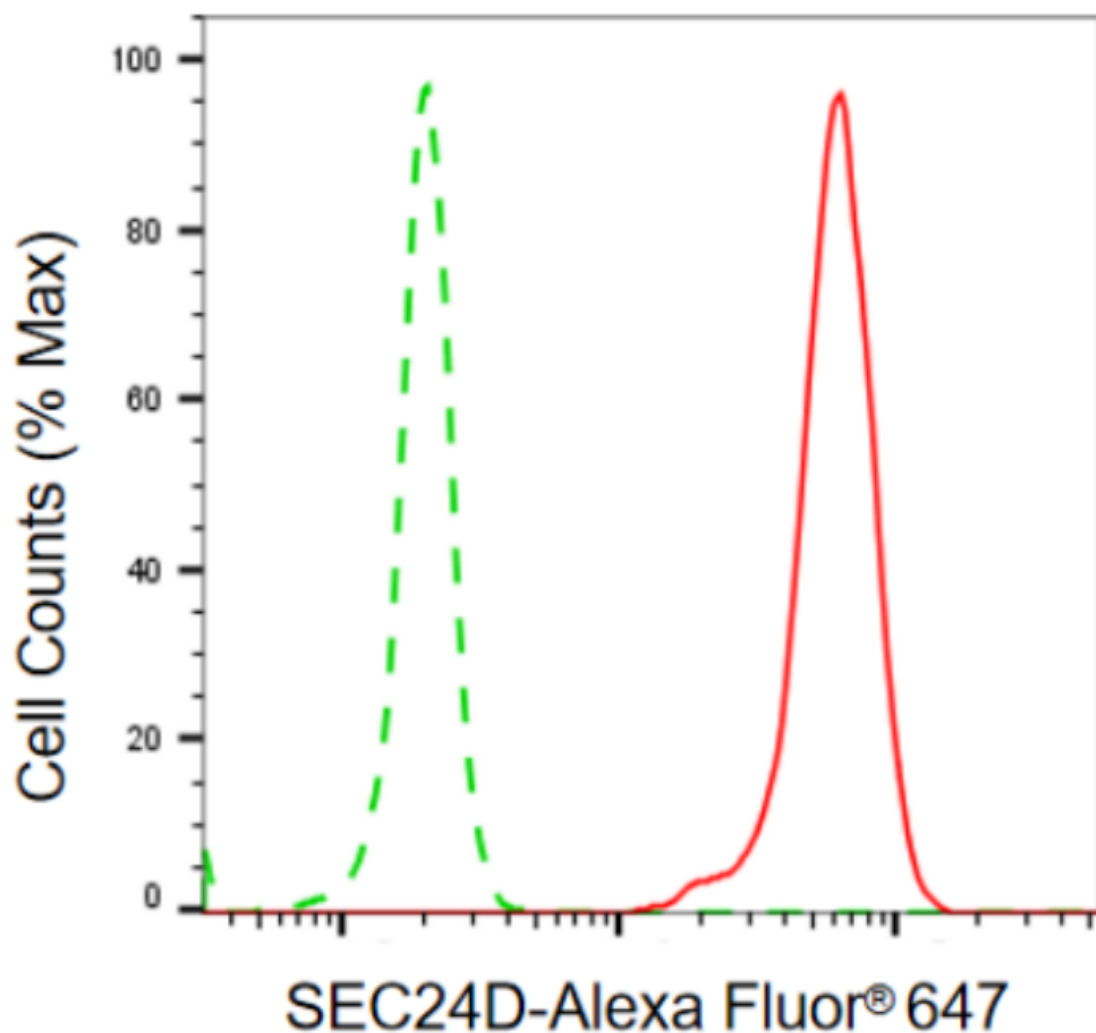
[WWW.GENUINBIOTECH.COM](http://WWW.GENUINBIOTECH.COM)

# Anti-SEC24D Recombinant Rabbit Monoclonal Antibody

PAGE 2

**Note:** This product is for research use only.

## Validation Data



Copyright ©2024 Genuin Biotechnologies LLC

Flow cytometric analysis of SEC24D expression in C2C12 cells using anti-SEC24D antibody (Cat#4436, 1:2,000). Green, isotype control; red, SEC24D.

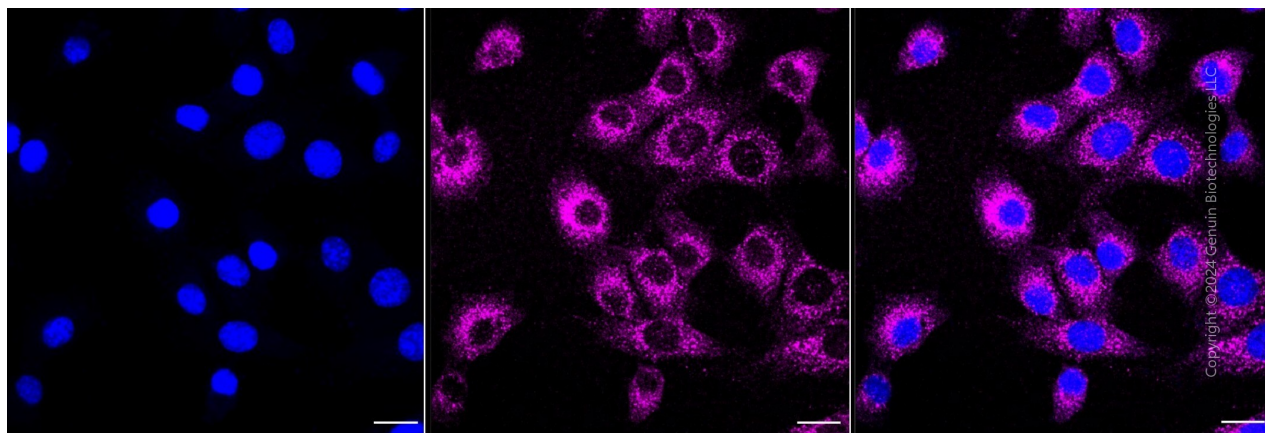
### SUPPORT

SUPPORT@GENUINBIOTECH.COM  
TEL: +1-540-855-7041

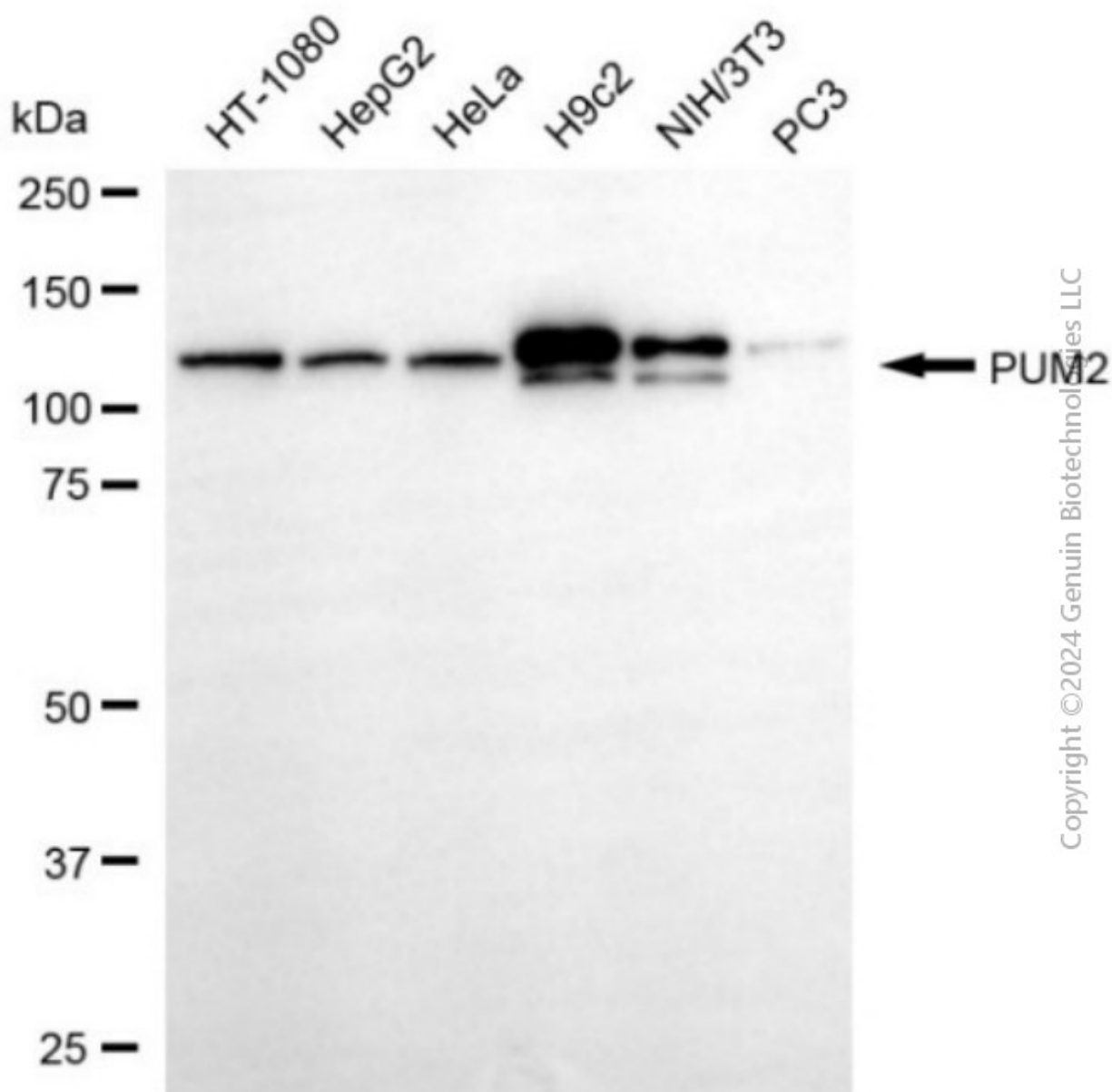
### ORDERS

SALES@GENUINBIOTECH.COM  
FAX: +1-540-855-7041

[WWW.GENUINBIOTECH.COM](http://WWW.GENUINBIOTECH.COM)



Immunocytochemical staining of C2C12 cells with anti-SEC24D antibody (Cat#4436, 1:1,000). Nuclei were stained blue with DAPI; SEC24D was stained magenta with Alexa Fluor® 647. Images were taken using Leica stellaris 5. Protein abundance based on laser Intensity and smart gain: Medium. Scale bar, 20  $\mu$ m.



Western blotting analysis using anti-SEC24D antibody (Cat#4436). Total cell lysates (30 µg) from various cell lines were loaded and separated by SDS-PAGE. The blot was incubated with anti-SEC24D antibody (Cat#4436, 1:5,000) and HRP-conjugated goat anti-rabbit secondary antibody (Cat#201, 1:20,000) respectively. Image was developed using NaQ™ ECL Substrate Kit (Cat#716).