

Anti-PWP1 Recombinant Rabbit Monoclonal Antibody



Catalog #: 4437

Aliases

PWP1; PWP1 Homolog, Endonuclein; IEF-SSP-9502; Periodic Tryptophan Protein 1 Homolog; Keratinocyte Protein IEF SSP 9502; Endonuclein; Nuclear Phosphoprotein Similar To S. Cerevisiae PWP1; PWP1 Homolog (S. Cerevisiae); NCLB

Background

Gene Name: PWP1

NCBI Gene Entry: [11137](#)

UniProt Entry: [Q13610](#)

Application Information

Molecular Weight: Predicted, 56 kDa; observed, 74 kDa

Clonality: Rabbit monoclonal antibody

Clone ID: 24GB11215

Species Reactivity: Human, mouse, rat

Applications Tested: Western blotting (WB), flow cytometry (FCM), immunocytochemistry (IC)

Immunogen

A synthesized peptide derived from human PWP1

Isotype

Rabbit IgG

Storage Buffer

Supplied in PBS (pH 7.4) containing 50% glycerol, and 0.02% sodium azide.

Storage

Store at -20 °C for one year.

Recommended Dilutions

Western Blotting (WB): 1:1,000-1:5,000

Flow Cytometry (FCM): 1:2,000

Immunocytochemistry (IC): 1:100-1:1,000

Note: This product is for research use only.

SUPPORT

SUPPORT@GENUINBIOTECH.COM
TEL: +1-540-855-7041

ORDERS

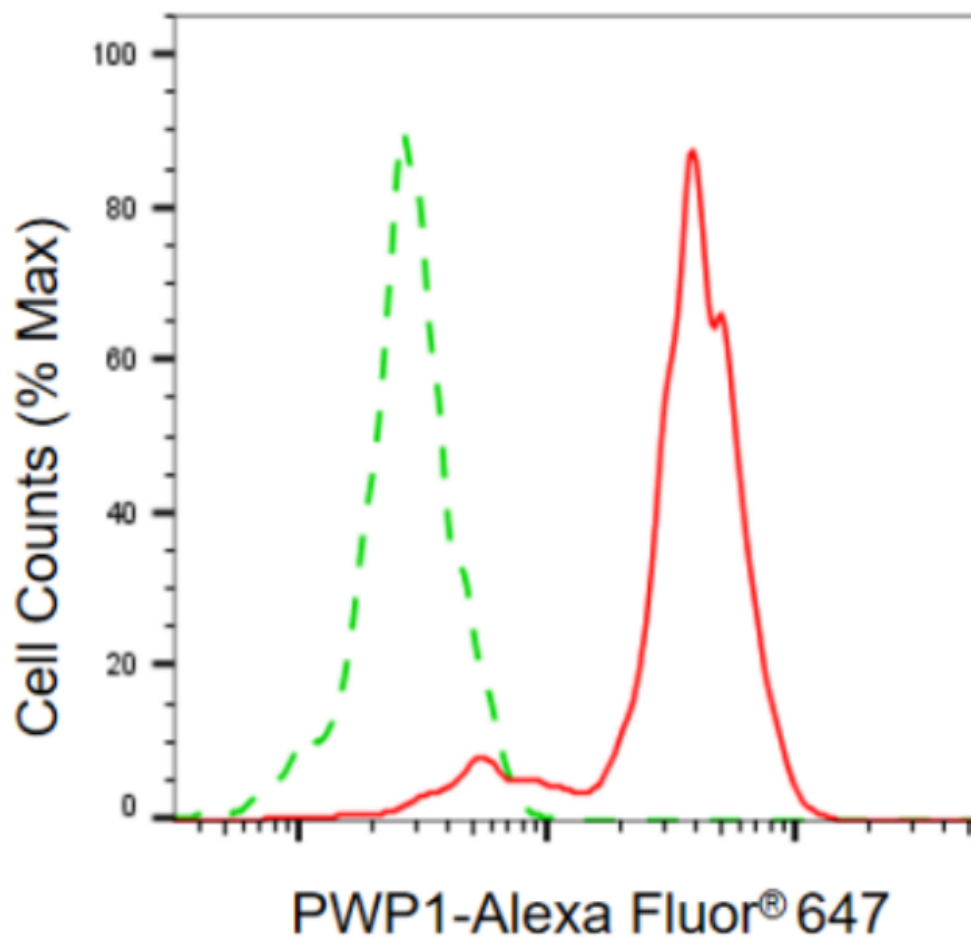
SALES@GENUINBIOTECH.COM
FAX: +1-540-855-7041

WWW.GENUINBIOTECH.COM

Anti-PWP1 Recombinant Rabbit Monoclonal Antibody

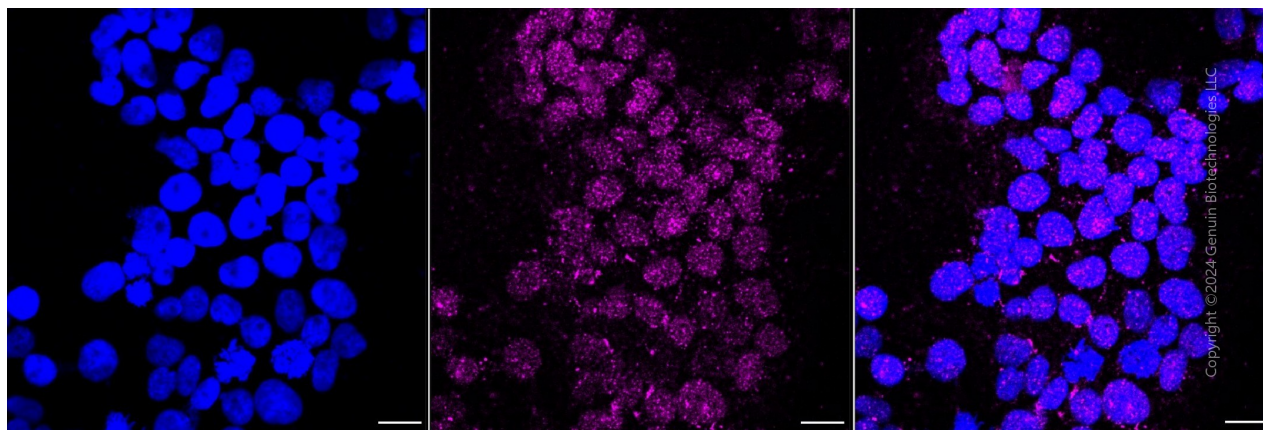
PAGE 2

Validation Data



Copyright ©2024 Genuin Biotechnologies LLC

Flow cytometric analysis of PWP1 expression in HeLa cells using anti-PWP1 antibody (Cat#4437, 1:2,000). Green, isotype control; red, PWP1.



SUPPORT

SUPPORT@GENUINBIOTECH.COM
TEL: +1-540-855-7041

ORDERS

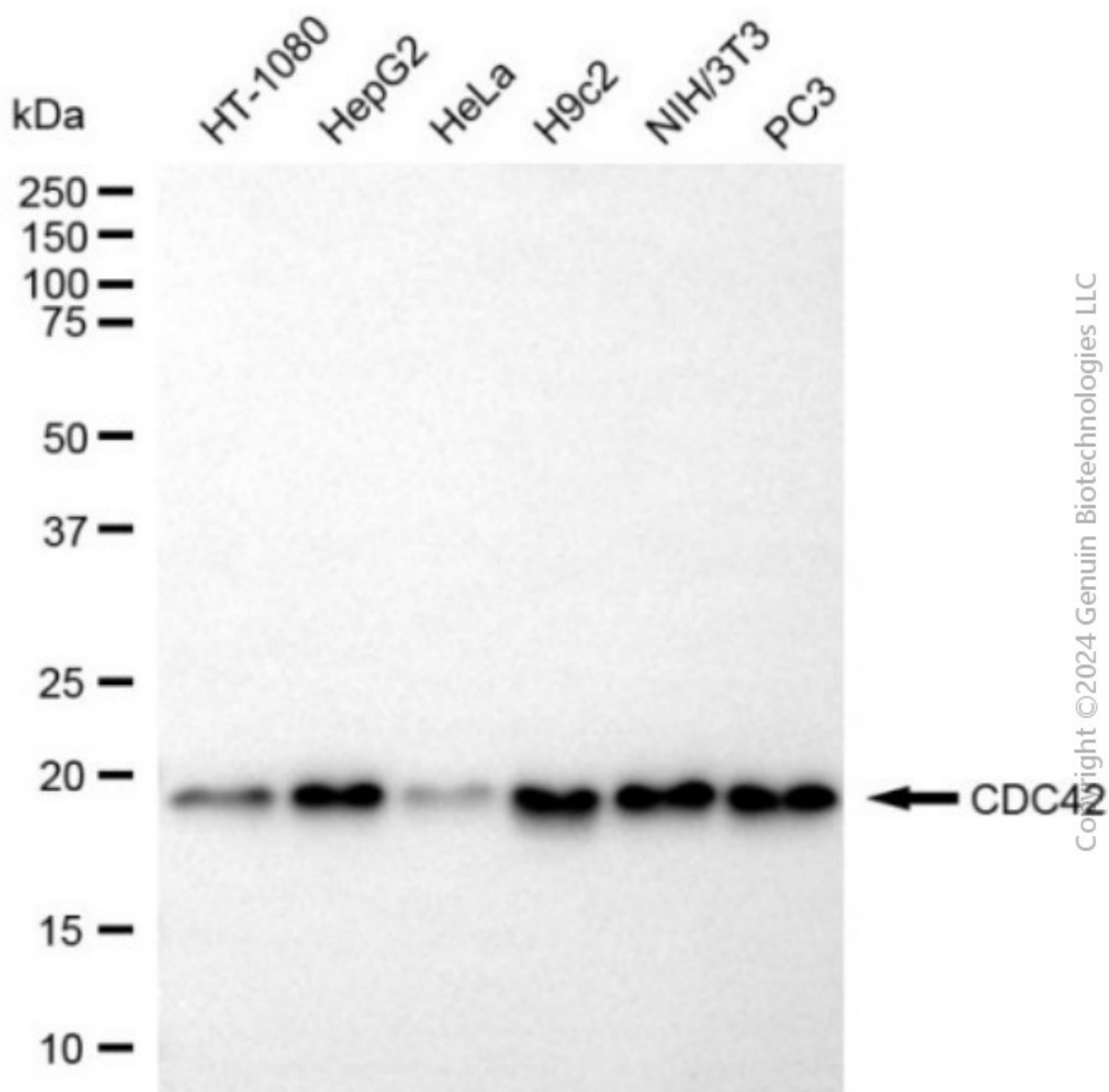
SALES@GENUINBIOTECH.COM
FAX: +1-540-855-7041

WWW.GENUINBIOTECH.COM

Anti-PWP1 Recombinant Rabbit Monoclonal Antibody

PAGE 3

Immunocytochemical staining of Hela cells with anti-PWP1 antibody (Cat#4437, 1:1,000). Nuclei were stained blue with DAPI; PWP1 was stained magenta with Alexa Fluor® 647. Images were taken using Leica stellaris 5. Protein abundance based on laser Intensity and smart gain: Medium. Scale bar, 20 µm.



Western blotting analysis using anti-PWP1 antibody (Cat#4437). Total cell lysates (30 µg) from various cell lines were loaded and separated by SDS-PAGE. The blot was incubated with anti-PWP1 antibody (Cat#4437, 1:5,000) and HRP-conjugated goat anti-rabbit secondary antibody (Cat#201, 1:20,000) respectively. Image was developed using NaQ™ ECL Substrate Kit (Cat#716).

SUPPORT

SUPPORT@GENUINBIOTECH.COM
TEL: +1-540-855-7041

ORDERS

SALES@GENUINBIOTECH.COM
FAX: +1-540-855-7041

WWW.GENUINBIOTECH.COM