

# Anti-Pre-mRNA Processing Factor 4 Recombinant Rabbit Monoclonal Antibody



**Catalog #: 4439**

## Aliases

Pre-mRNA Processing Factor 4; PRP4; U4/U6 Small Nuclear Ribonucleoprotein Prp4; SNRNP60; HPRP4P; Prp4p; HPRP4; PRP4/STK/WD Splicing Factor; U4/U6 SnRNP 60 KDa Protein; WD Splicing Factor Prp4; PRP4 Homolog; PRP4 Pre-mRNA Processing Factor 4 Homolog (Yeast); PRP4 Pre-mRNA Processing Factor 4 Homolog; HPrp4; RP70

## Background

Gene Name: PRPF4

NCBI Gene Entry: [9128](#)

UniProt Entry: [O43172](#)

## Application Information

Molecular Weight: Predicted, 58 kDa; observed, 58 kDa

Clonality: Rabbit monoclonal antibody

Clone ID: 24GB11225

Species Reactivity: Human, mouse, rat

Applications Tested: Western blotting (WB), flow cytometry (FCM), immunocytochemistry (IC)

## Immunogen

A synthesized peptide derived from human PRPF4

## Isotype

Rabbit IgG

## Storage Buffer

Supplied in PBS (pH 7.4) containing 50% glycerol, and 0.02% sodium azide.

## Storage

Store at -20 °C for one year.

## Recommended Dilutions

Western Blotting (WB): 1:1,000-1:5,000

Flow Cytometry (FCM): 1:2,000

Immunocytochemistry (IC): 1:100-1:1,000

---

### SUPPORT

SUPPORT@GENUINBIOTECH.COM  
TEL: +1-540-855-7041

### ORDERS

SALES@GENUINBIOTECH.COM  
FAX: +1-540-855-7041

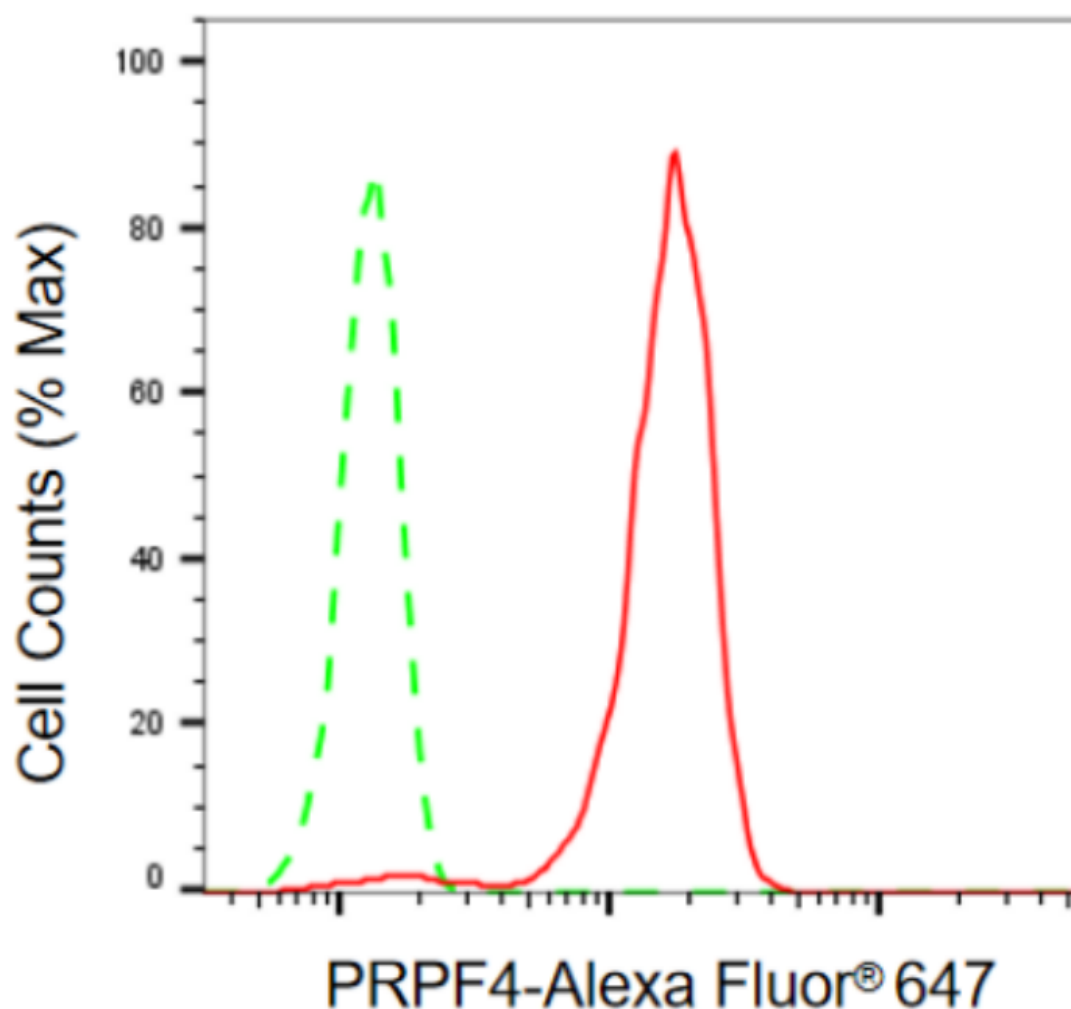
[WWW.GENUINBIOTECH.COM](http://WWW.GENUINBIOTECH.COM)

# Anti-Pre-mRNA Processing Factor 4 Recombinant Rabbit Monoclonal Antibody

PAGE 2

**Note:** This product is for research use only.

## Validation Data



Copyright ©2024 Genuin Biotechnologies LLC

Flow cytometric analysis of PRPF4 expression in HepG2 cells using anti-PRPF4 antibody (Cat#4439, 1:2,000). Green, isotype control; red, PRPF4.

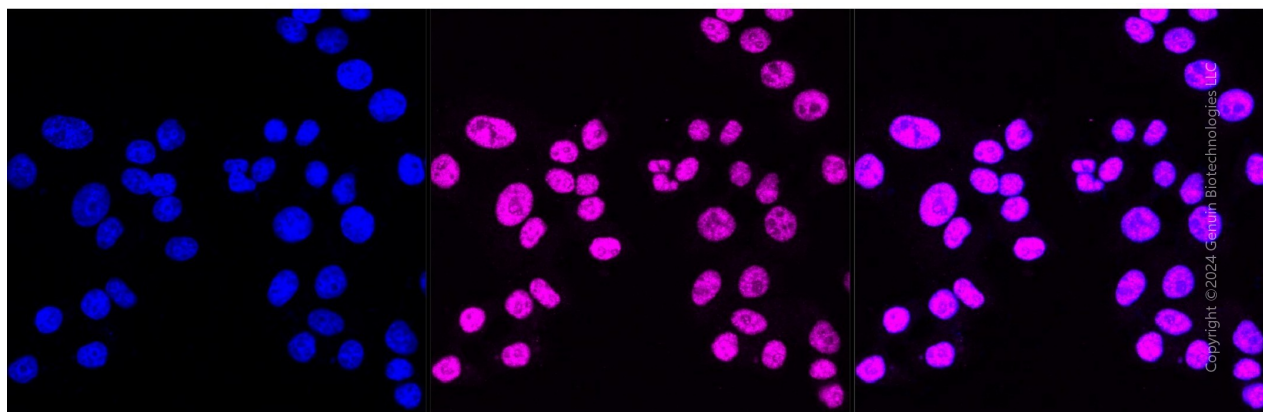
### SUPPORT

SUPPORT@GENUINBIOTECH.COM  
TEL: +1-540-855-7041

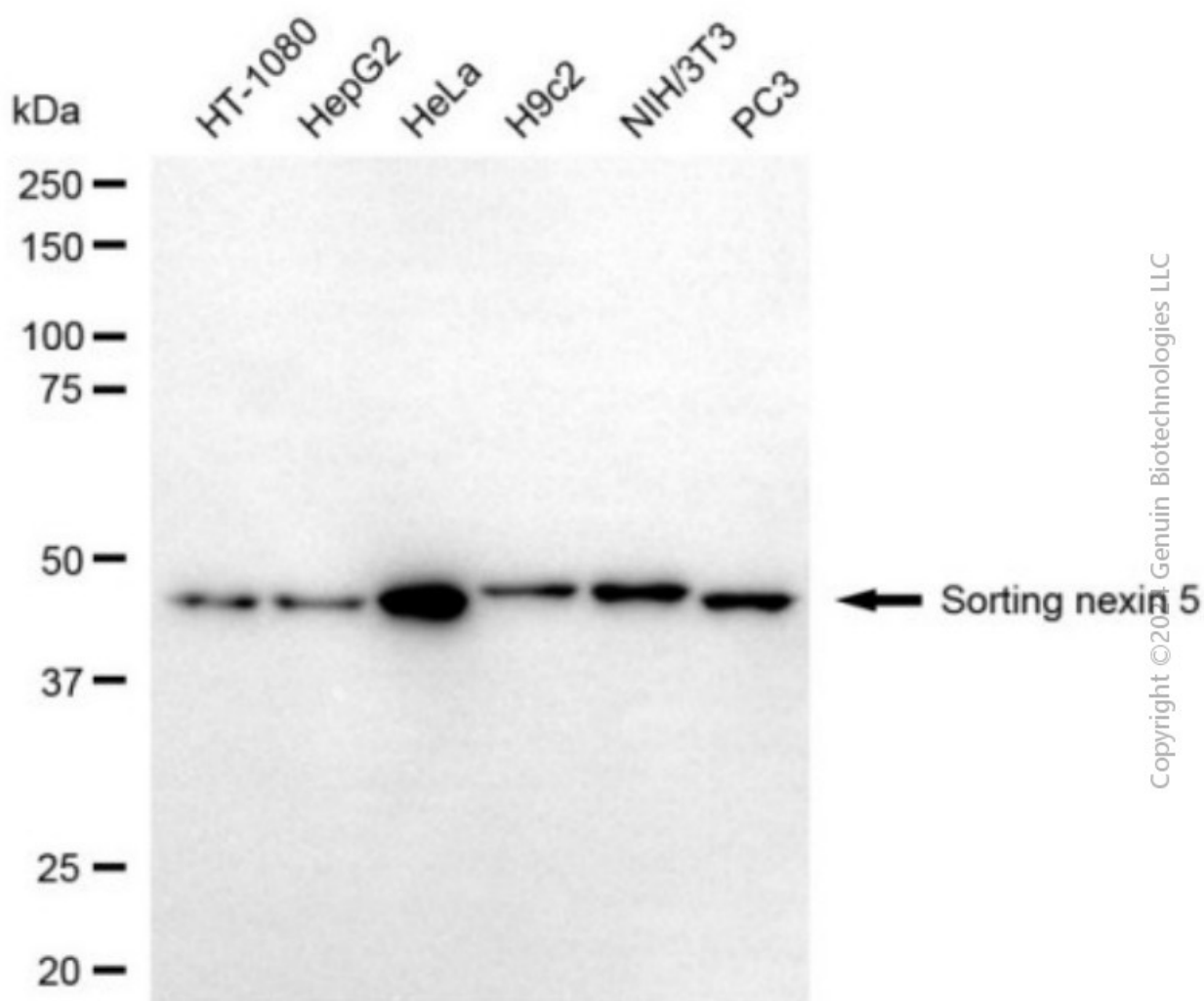
### ORDERS

SALES@GENUINBIOTECH.COM  
FAX: +1-540-855-7041

[WWW.GENUINBIOTECH.COM](http://WWW.GENUINBIOTECH.COM)



Immunocytochemical staining of HepG2 cells with anti-PRPF4 antibody (Cat#4439, 1:1,000). Nuclei were stained blue with DAPI; PRPF4 was stained magenta with Alexa Fluor® 647. Images were taken using Leica stellaris 5. Protein abundance based on laser Intensity and smart gain: High. Scale bar, 20  $\mu$ m.



## **Anti-Pre-mRNA Processing Factor 4 Recombinant Rabbit Monoclonal Antibody**

PAGE 4

Western blotting analysis using anti-PRPF4 antibody (Cat#4439). Total cell lysates (30 µg) from various cell lines were loaded and separated by SDS-PAGE. The blot was incubated with anti-PRPF4 antibody (Cat#4439, 1:5,000) and HRP-conjugated goat anti-rabbit secondary antibody (Cat#201, 1:20,000) respectively. Image was developed using NaQ™ ECL Substrate Kit (Cat#716).

---

### **SUPPORT**

SUPPORT@GENUINBIOTECH.COM  
TEL: +1-540-855-7041

### **ORDERS**

SALES@GENUINBIOTECH.COM  
FAX: +1-540-855-7041

**WWW.GENUINBIOTECH.COM**