

# Anti-PPP2R5E Recombinant Rabbit Monoclonal Antibody



**Catalog #: 4442**

## Aliases

Protein Phosphatase 2 Regulatory Subunit B'Epsilon; B56epsilon; B56E; Serine/Threonine-Protein Phosphatase 2A 56 KDa Regulatory Subunit Epsilon Isoform; Serine/Threonine Protein Phosphatase 2A, 56 KDa Regulatory Subunit, Epsilon; Protein Phosphatase 2, Regulatory Subunit B (B56), Epsilon Isoform; Protein Phosphatase 2 Regulatory Subunit B', Epsilon; PP2A B Subunit Isoform PR61-Epsilon; PP2A B Subunit Isoform B56-Epsilon; PP2A B Subunit Isoform B'-Epsilon; PP2A B Subunit Isoform R5-Epsilon; PP2A, B Subunit, PR61 Epsilon; PP2A, B Subunit, B56 Epsilon; PP2A, B Subunit, B' Epsilon; PP2A, B Subunit, R5 Epsilon

## Background

Gene Name: PPP2R5E

NCBI Gene Entry: [5529](#)

UniProt Entry: [Q16537](#)

## Application Information

Molecular Weight: Predicted, 55 kDa; observed, 50 kDa

Clonality: Rabbit monoclonal antibody

Clone ID: 24GB11240

Species Reactivity: Human, mouse, rat

Applications Tested: Western blotting (WB), flow cytometry (FCM), immunocytochemistry (IC)

## Immunogen

A synthesized peptide derived from human PPP2R5E

## Isotype

Rabbit IgG

## Storage Buffer

Supplied in PBS (pH 7.4) containing 50% glycerol, and 0.02% sodium azide.

## Storage

Store at -20 °C for one year.

## Recommended Dilutions

Western Blotting (WB): 1:1,000-1:5,000

Flow Cytometry (FCM): 1:2,000

---

### SUPPORT

SUPPORT@GENUINBIOTECH.COM  
TEL: +1-540-855-7041

### ORDERS

SALES@GENUINBIOTECH.COM  
FAX: +1-540-855-7041

[WWW.GENUINBIOTECH.COM](http://WWW.GENUINBIOTECH.COM)

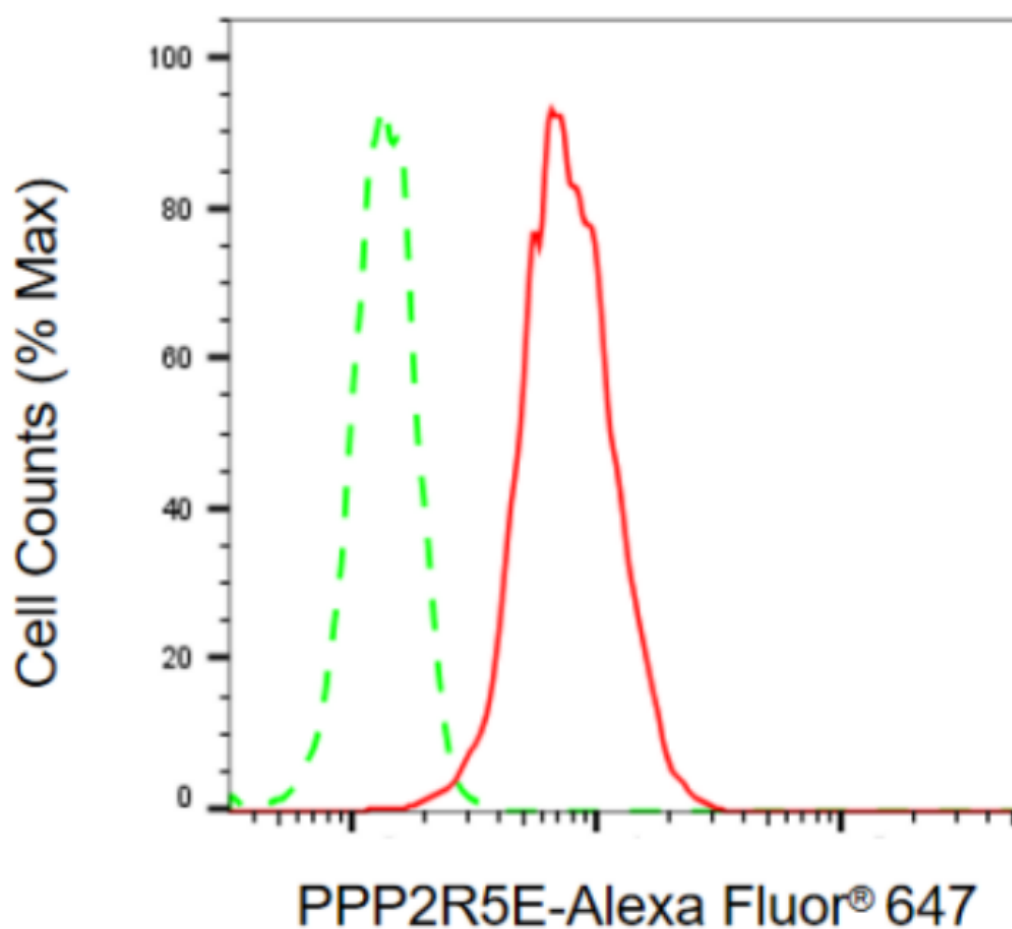
# Anti-PPP2R5E Recombinant Rabbit Monoclonal Antibody

PAGE 2

Immunocytochemistry (IC): 1:100-1:1,000

**Note:** This product is for research use only.

## Validation Data



Copyright ©2024 Genuin Biotechnologies LLC

Flow cytometric analysis of PPP2R5E expression in HepG2 cells using anti-PPP2R5E antibody (Cat#4442, 1:2,000). Green, isotype control; red, PPP2R5E.

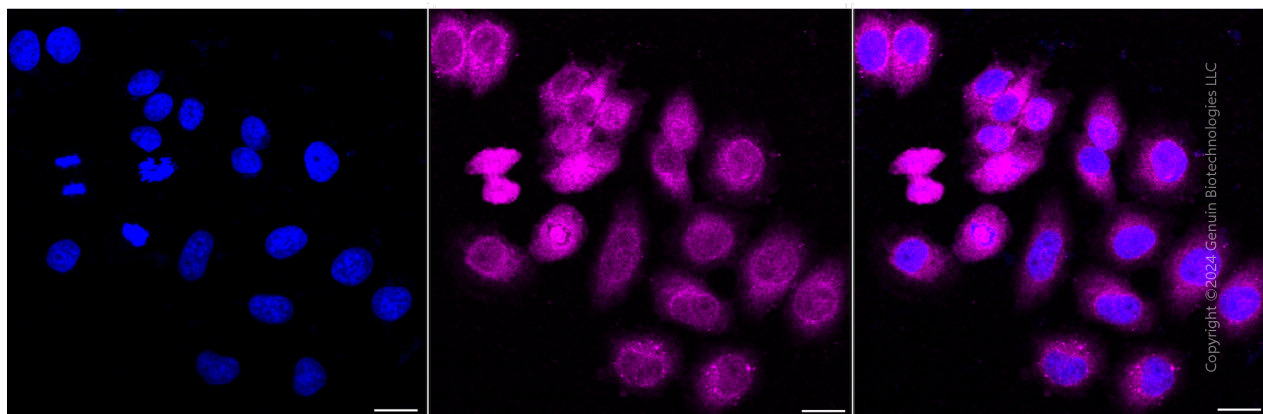
### SUPPORT

SUPPORT@GENUINBIOTECH.COM  
TEL: +1-540-855-7041

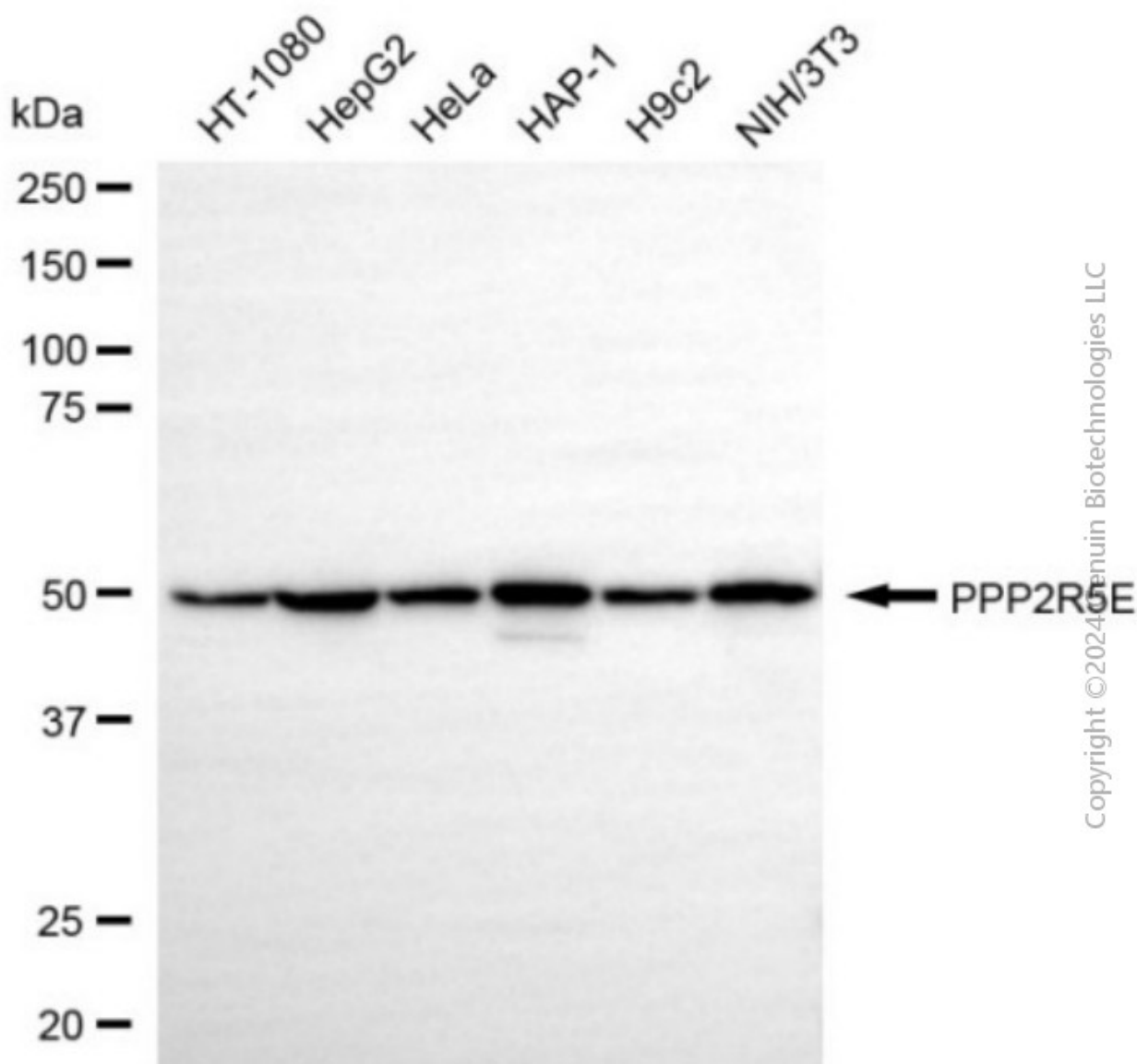
### ORDERS

SALES@GENUINBIOTECH.COM  
FAX: +1-540-855-7041

[WWW.GENUINBIOTECH.COM](http://WWW.GENUINBIOTECH.COM)



Immunocytochemical staining of HepG2 cells with anti-PPP2R5E antibody (Cat#4442, 1:1,000). Nuclei were stained blue with DAPI; PPP2R5E was stained magenta with Alexa Fluor® 647. Images were taken using Leica stellaris 5. Protein abundance based on laser Intensity and smart gain: Medium. Scale bar, 20  $\mu$ m.



Western blotting analysis using anti-PPP2R5E antibody (Cat#4442). Total cell lysates (30 µg) from various cell lines were loaded and separated by SDS-PAGE. The blot was incubated with anti-PPP2R5E antibody (Cat#4442, 1:5,000) and HRP-conjugated goat anti-rabbit secondary antibody (Cat#201, 1:20,000) respectively. Image was developed using NaQ™ ECL Substrate Kit (Cat#716).