

Anti-Serine Racemase Recombinant Rabbit Monoclonal Antibody



Catalog #: 4446

Aliases

SRR; Serine Racemase; ILV1; ISO1; D-Serine Ammonia-Lyase; L-Serine Ammonia-Lyase; D-Serine Dehydratase; L-Serine Dehydratase; EC 5.1.1.18; EC 4.3.1.18; EC 4.3.1.17

Background

Gene Name: SRR

NCBI Gene Entry: [63826](#)

UniProt Entry: [Q9GZT4](#)

Application Information

Molecular Weight: Predicted, 37 kDa; observed, 34-36 kDa

Clonality: Rabbit monoclonal antibody

Clone ID: 24GB11260

Species Reactivity: Human

Applications Tested: Western blotting (WB), flow cytometry (FCM), immunocytochemistry (IC)

Immunogen

A synthesized peptide derived from human Serine racemase

Isotype

Rabbit IgG

Storage Buffer

Supplied in PBS (pH 7.4) containing 50% glycerol, and 0.02% sodium azide.

Storage

Store at -20 °C for one year.

Recommended Dilutions

Western Blotting (WB): 1:1,000-1:5,000

Flow Cytometry (FCM): 1:2,000

Immunocytochemistry (IC): 1:100-1:1,000

Note: This product is for research use only.

Validation Data

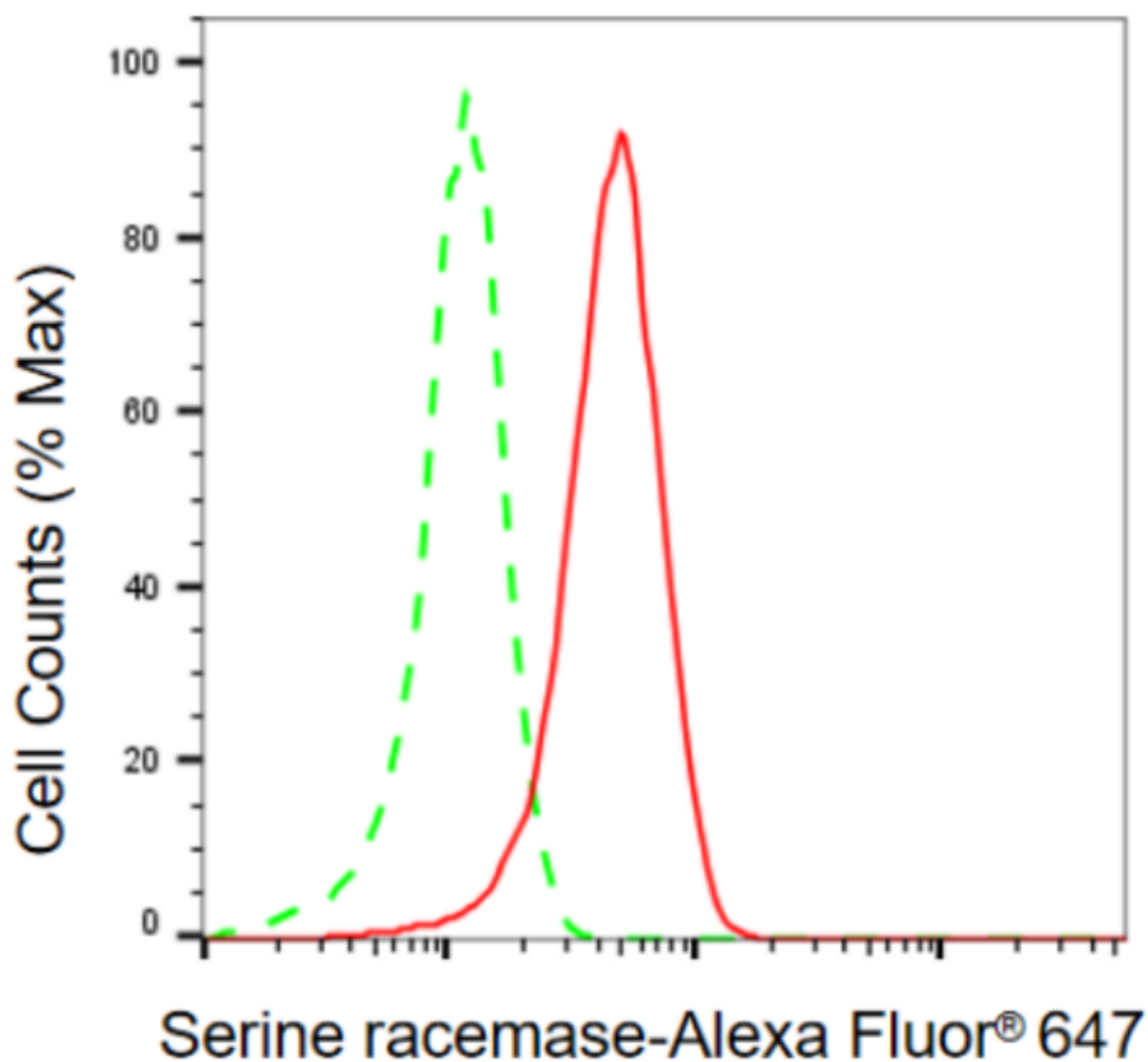
SUPPORT

SUPPORT@GENUINBIOTECH.COM
TEL: +1-540-855-7041

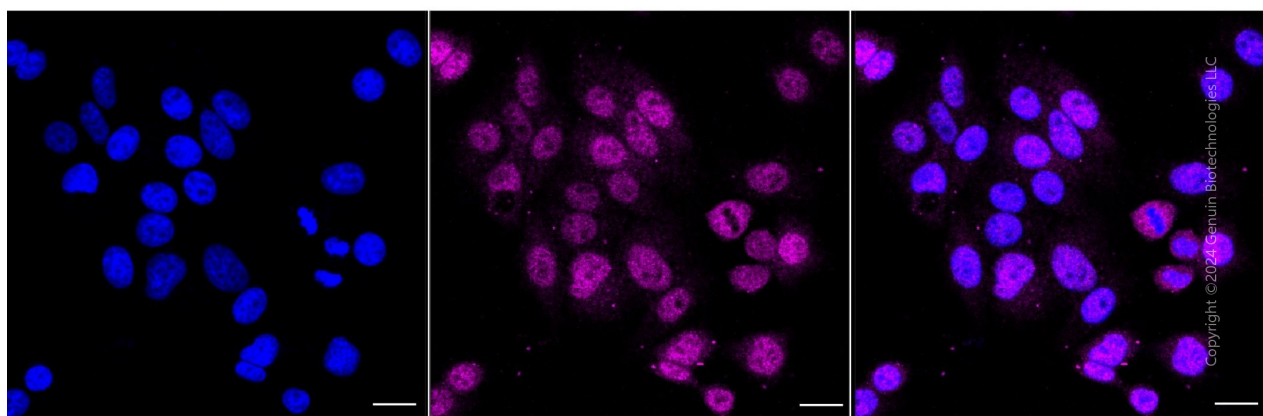
ORDERS

SALES@GENUINBIOTECH.COM
FAX: +1-540-855-7041

WWW.GENUINBIOTECH.COM



Flow cytometric analysis of serine racemase expression in HepG2 cells using anti-serine racemase antibody (Cat#4446, 1:2,000). Green, isotype control; red, serine racemase.



SUPPORT

SUPPORT@GENUINBIOTECH.COM
TEL: +1-540-855-7041

ORDERS

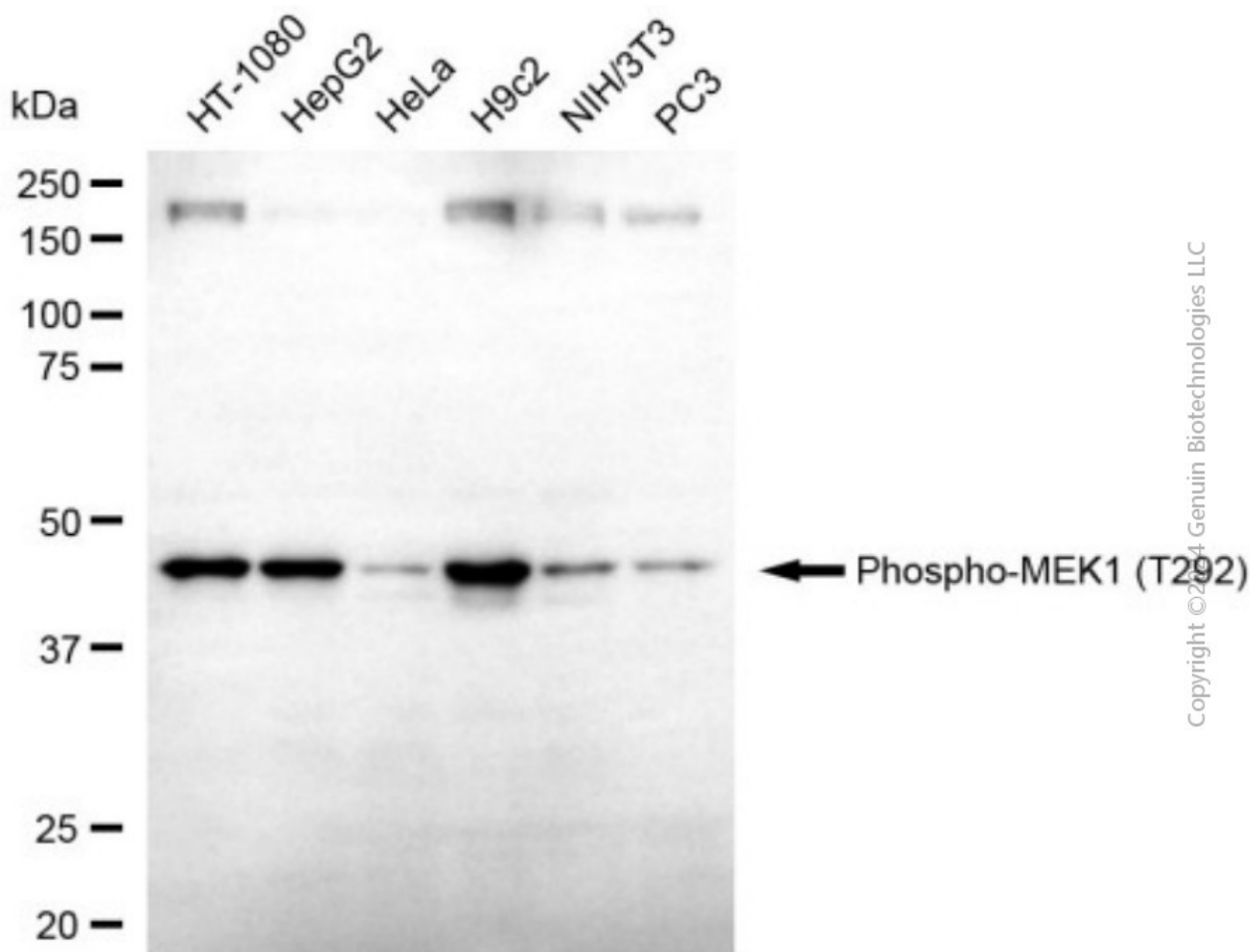
SALES@GENUINBIOTECH.COM
FAX: +1-540-855-7041

WWW.GENUINBIOTECH.COM

Anti-Serine Racemase Recombinant Rabbit Monoclonal Antibody

PAGE 3

Immunocytochemical staining of HepG2 cells with anti-Serine racemase antibody (Cat#4446, 1:1,000). Nuclei were stained blue with DAPI; Serine racemase was stained magenta with Alexa Fluor® 647. Images were taken using Leica stellaris 5. Protein abundance based on laser Intensity and smart gain: Medium. Scale bar, 20 μ m.



Western blotting analysis using anti-serine racemase antibody (Cat#4446). Total cell lysates (30 μ g) from various cell lines were loaded and separated by SDS-PAGE. The blot was incubated with anti-serine racemase antibody (Cat#4446, 1:5,000) and HRP-conjugated goat anti-rabbit secondary antibody (Cat#201, 1:20,000) respectively. Image was developed using NaQ™ ECL Substrate Kit (Cat#716).

SUPPORT

SUPPORT@GENUINBIOTECH.COM
TEL: +1-540-855-7041

ORDERS

SALES@GENUINBIOTECH.COM
FAX: +1-540-855-7041

WWW.GENUINBIOTECH.COM