

Anti-G protein subunit alpha q Recombinant Rabbit Monoclonal Antibody



Catalog #: 4447

Aliases

GNAQ; G Protein Subunit Alpha Q; GAQ; G-ALPHA-Q; Guanine Nucleotide Binding Protein (G Protein), Q Polypeptide; Guanine Nucleotide-Binding Protein G(Q) Subunit Alpha; Guanine Nucleotide-Binding Protein Alpha-Q; Epididymis Secretory Sperm Binding Protein; EC 3.6.5.-; CMAL; CMC1; SWS

Background

Gene Name: GNAQ

NCBI Gene Entry: [2776](#)

UniProt Entry: [P50148](#)

Application Information

Molecular Weight: Predicted, 42 kDa; observed, 42 kDa

Clonality: Rabbit monoclonal antibody

Clone ID: 24GB11265

Species Reactivity: Human, mouse, rat

Applications Tested: Western blotting (WB), flow cytometry (FCM), immunocytochemistry (IC)

Immunogen

A synthesized peptide derived from human GNAQ

Isotype

Rabbit IgG

Storage Buffer

Supplied in PBS (pH 7.4) containing 50% glycerol, and 0.02% sodium azide.

Storage

Store at -20 °C for one year.

Recommended Dilutions

Western Blotting (WB): 1:1,000-1:5,000

Immunocytochemistry (IC): 1:100-1:1,000

Flow Cytometry (FCM): 1:2,00

SUPPORT

SUPPORT@GENUINBIOTECH.COM
TEL: +1-540-855-7041

ORDERS

SALES@GENUINBIOTECH.COM
FAX: +1-540-855-7041

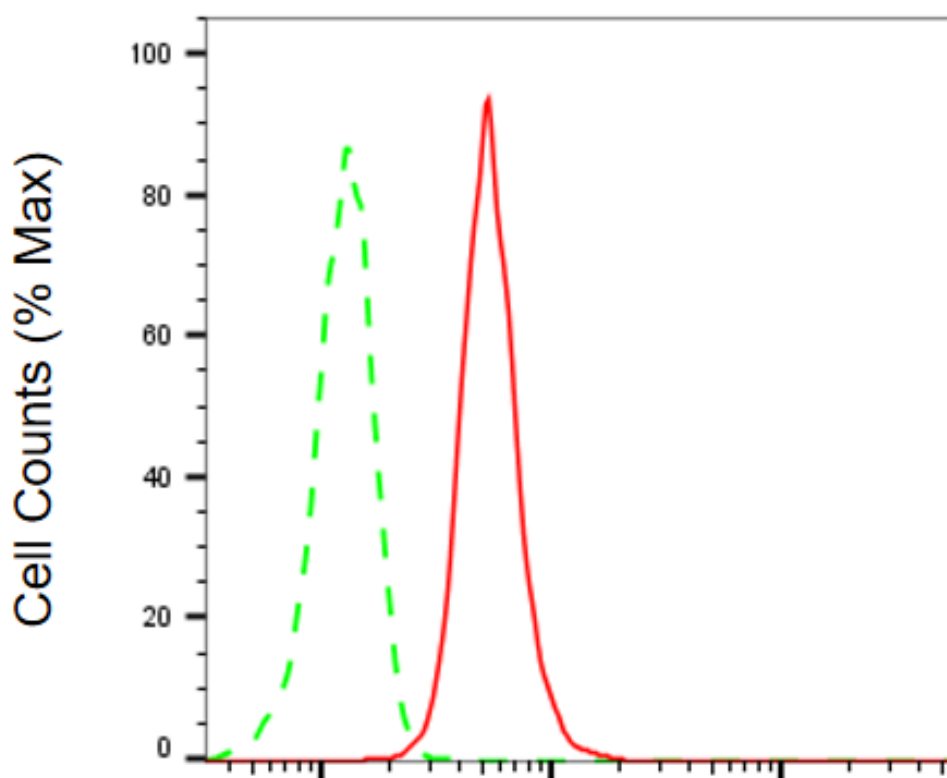
WWW.GENUINBIOTECH.COM

Anti-G protein subunit alpha q Recombinant Rabbit Monoclonal Antibody

PAGE 2

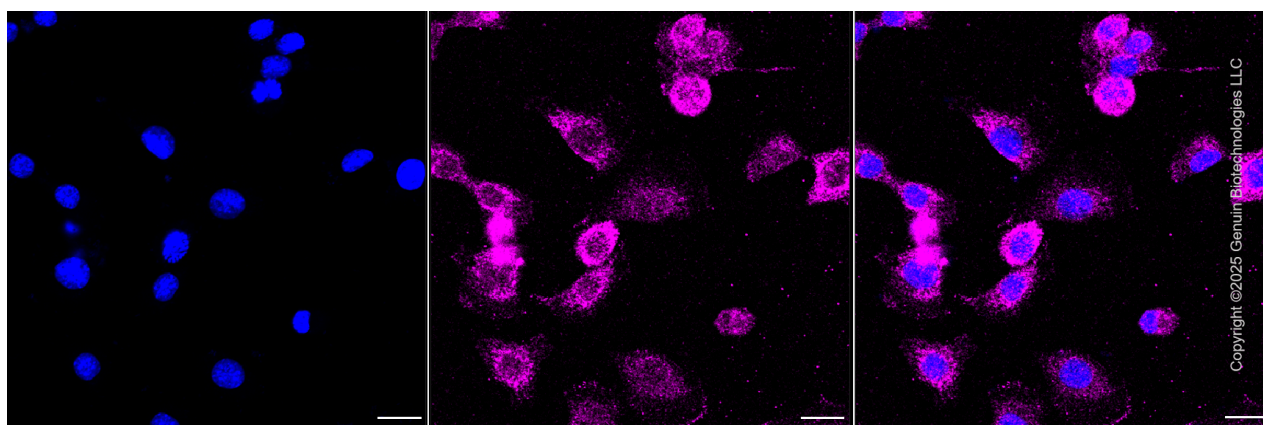
Note: This product is for research use only.

Validation Data



G protein subunit alpha q-Alexa Fluor® 647

Flow cytometric analysis of G protein subunit alpha q expression in C2C12 cells using anti-G protein subunit alpha q antibody (Cat#4447, 1:2,000). Green, isotype control; red, G protein subunit alpha q.



SUPPORT

SUPPORT@GENUINBIOTECH.COM
TEL: +1-540-855-7041

ORDERS

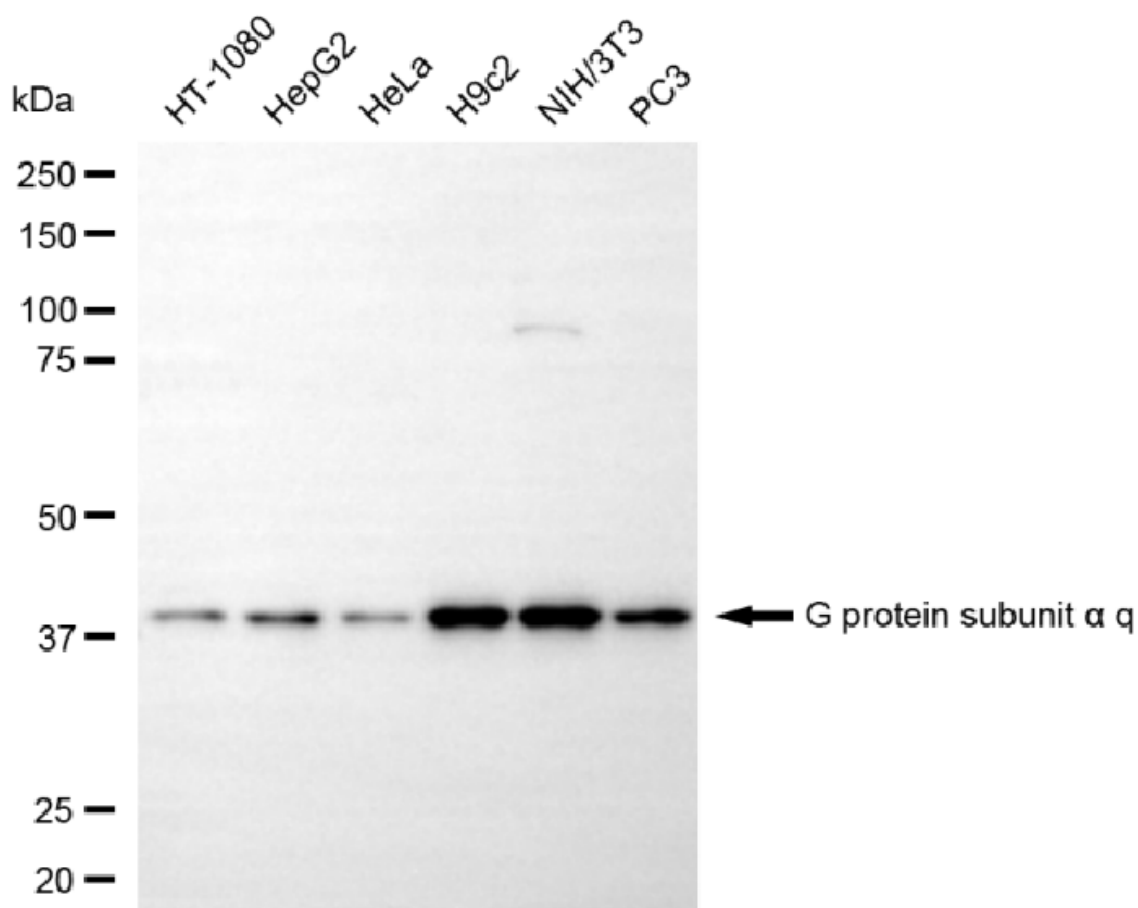
SALES@GENUINBIOTECH.COM
FAX: +1-540-855-7041

WWW.GENUINBIOTECH.COM

Anti-G protein subunit alpha q Recombinant Rabbit Monoclonal Antibody

PAGE 3

Immunocytochemical staining of C2C12 cells with anti-G protein subunit alpha q antibody (Cat#4447, 1:1,000). Nuclei were stained blue with DAPI; G protein subunit alpha q was stained magenta with Alexa Fluor® 647. Images were taken using Leica stellaris 5. Protein abundance based on laser Intensity and smart gain: Medium. Scale bar, 20 µm.



Copyright ©2025 Genuin Biotechnologies LLC

Western blotting analysis using anti-G protein subunit alpha q antibody (Cat#4447). Total cell lysates (30 µg) from various cell lines were loaded and separated by SDS-PAGE. The blot was incubated with anti-G protein subunit alpha q antibody (Cat#4447, 1:5,000) and HRP-conjugated goat anti-rabbit secondary antibody (Cat#201, 1:20,000) respectively. Image was developed using NaQ™ ECL Substrate Kit (Cat#716).

SUPPORT

SUPPORT@GENUINBIOTECH.COM
TEL: +1-540-855-7041

ORDERS

SALES@GENUINBIOTECH.COM
FAX: +1-540-855-7041

WWW.GENUINBIOTECH.COM