

Anti-MCM6 Recombinant Rabbit Monoclonal Antibody



Catalog #: 4453

Aliases

MCM6; Minichromosome Maintenance Complex Component 6; Minichromosome Maintenance Deficient (Mis5, S. Pombe) 6; DNA Replication Licensing Factor MCM6; P105MCM; Mis5; MCM6 Minichromosome Maintenance Deficient 6 (MIS5 Homolog, S. Pombe) (S. Cerevisiae); MCM6 Minichromosome Maintenance Deficient 6 (MIS5 Homolog, S. Pombe); Minichromosome Maintenance Deficient 6 Homolog (S. Cerevisiae); MIS5 Homolog (S.Pombe); EC 3.6.4.12; MCG40308; MIS5

Background

Gene Name: MCM6

NCBI Gene Entry: [4175](#)

UniProt Entry: [Q14566](#)

Application Information

Molecular Weight: Predicted, 93 kDa; observed, 93 kDa

Clonality: Rabbit monoclonal antibody

Clone ID: 24GB11295

Species Reactivity: Human, mouse, rat

Applications Tested: Western blotting (WB), flow cytometry (FCM), immunocytochemistry (IC)

Immunogen

A synthesized peptide derived from human MCM6

Isotype

Rabbit IgG

Storage Buffer

Supplied in PBS (pH 7.4) containing 50% glycerol, and 0.02% sodium azide.

Storage

Store at -20 °C for one year.

Recommended Dilutions

Western Blotting (WB): 1:1,000-1:5,000

Flow Cytometry (FCM): 1:2,000

Immunocytochemistry (IC): 1:100-1:1,000

SUPPORT

SUPPORT@GENUINBIOTECH.COM
TEL: +1-540-855-7041

ORDERS

SALES@GENUINBIOTECH.COM
FAX: +1-540-855-7041

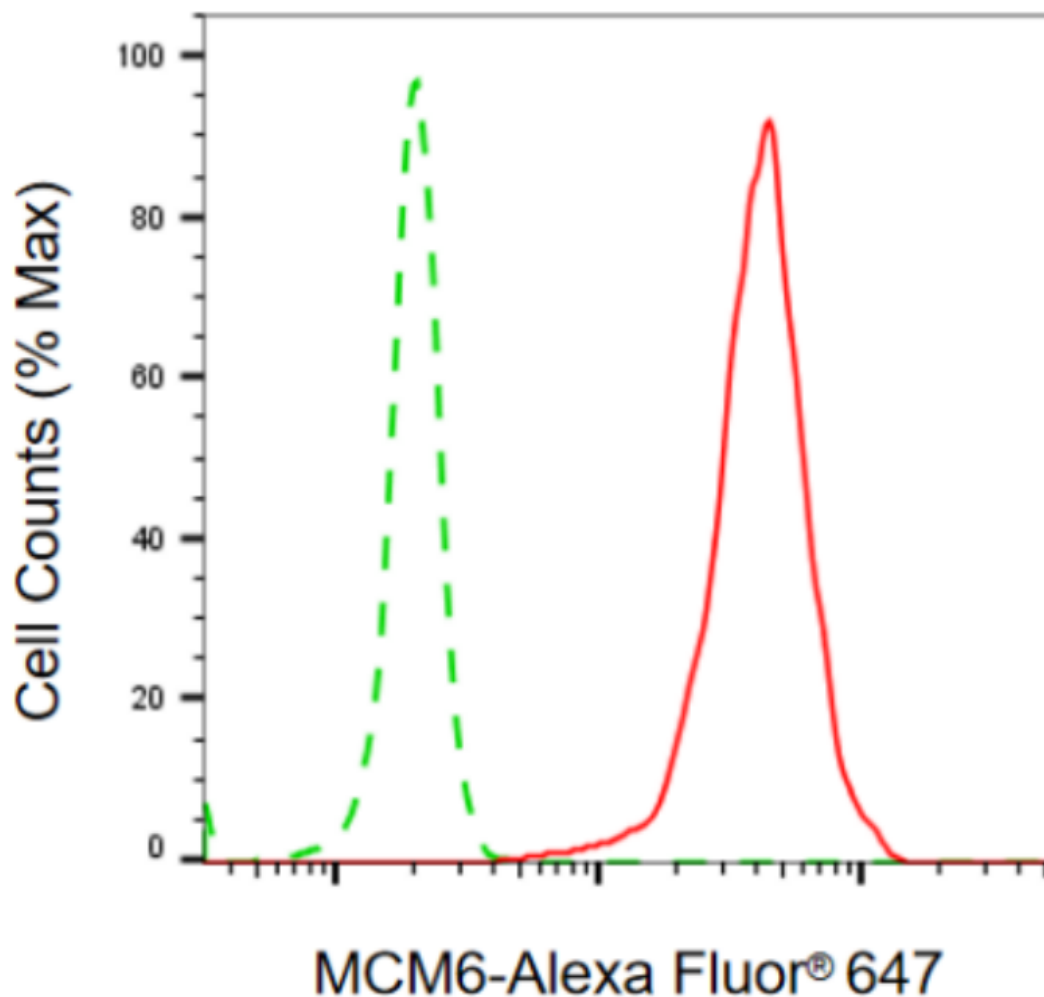
WWW.GENUINBIOTECH.COM

Anti-MCM6 Recombinant Rabbit Monoclonal Antibody

PAGE 2

Note: This product is for research use only.

Validation Data



Copyright ©2024 Genuin Biotechnologies LLC

Flow cytometric analysis of MCM6 expression in C2C12 cells using anti-MCM6 antibody (Cat#4453, 1:2,000). Green, isotype control; red, MCM6.

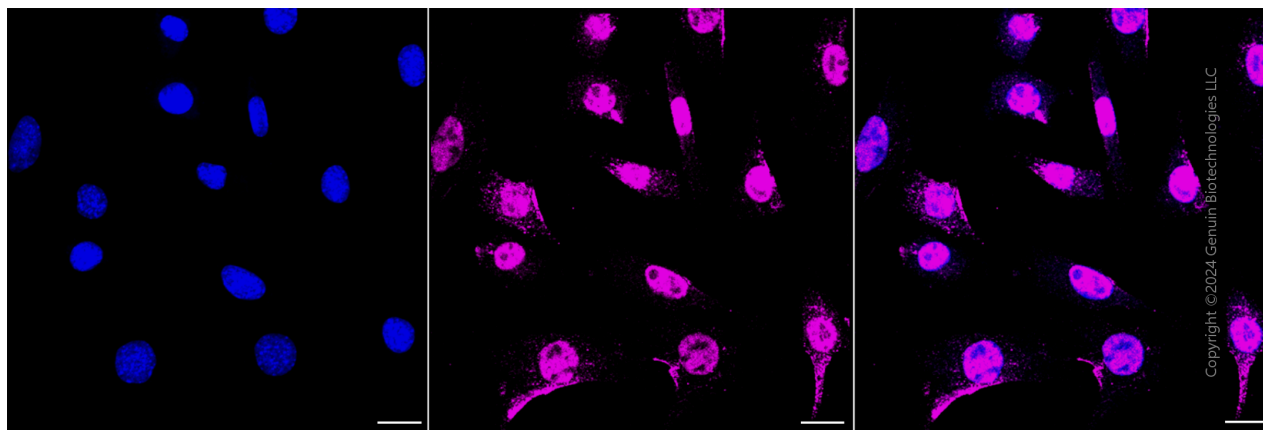
SUPPORT

SUPPORT@GENUINBIOTECH.COM
TEL: +1-540-855-7041

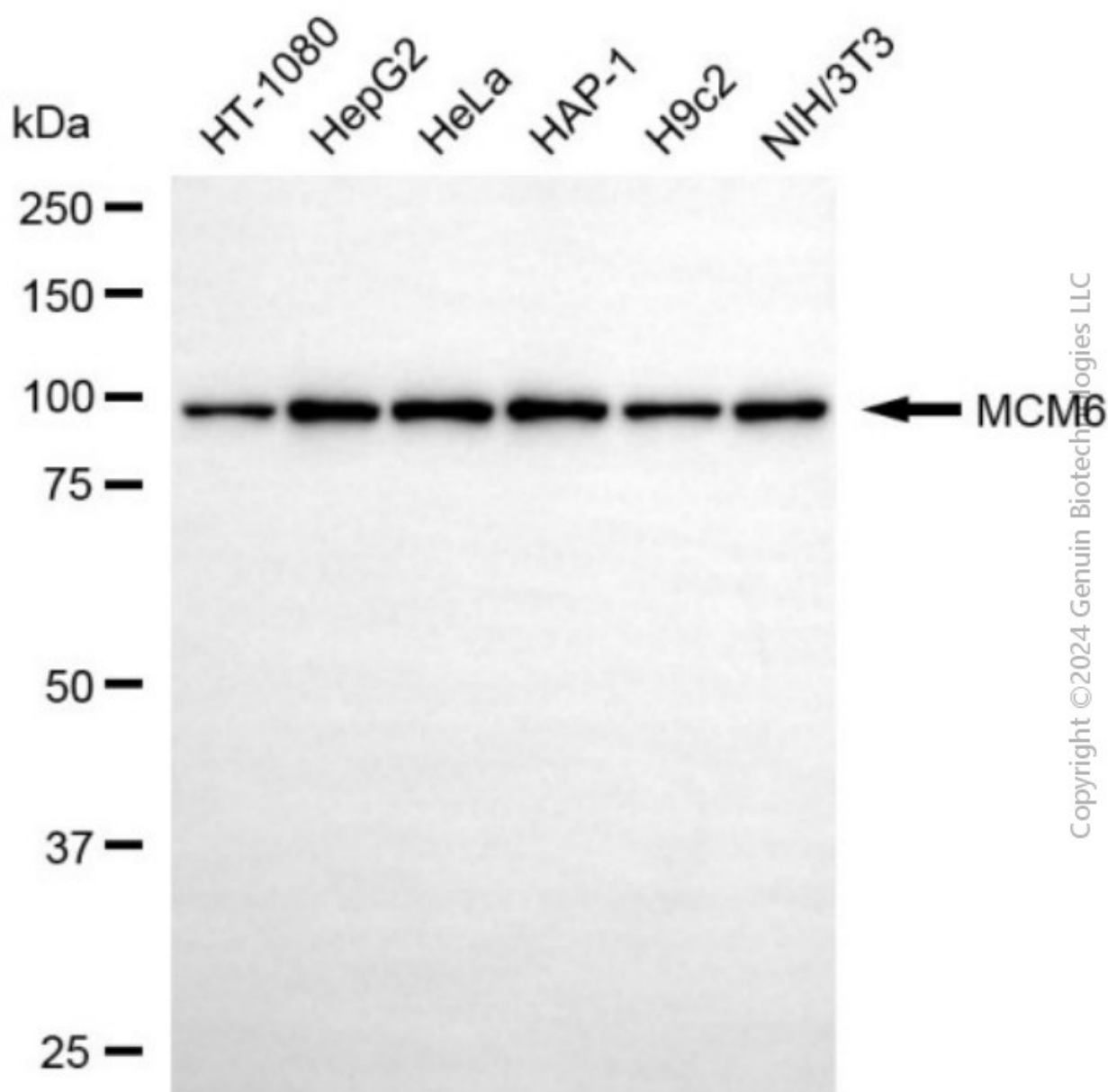
ORDERS

SALES@GENUINBIOTECH.COM
FAX: +1-540-855-7041

WWW.GENUINBIOTECH.COM



Immunocytochemical staining of C2C12 cells with anti-MCM6 antibody (Cat#4453, 1:1,000). Nuclei were stained blue with DAPI; MCM6 was stained magenta with Alexa Fluor® 647. Images were taken using Leica stellaris 5. Protein abundance based on laser Intensity and smart gain: Medium. Scale bar, 20 μ m.



Western blotting analysis using anti-MCM6 antibody (Cat#4453). Total cell lysates (30 μ g) from various cell lines were loaded and separated by SDS-PAGE. The blot was incubated with anti-MCM6 antibody (Cat#4453, 1:5,000) and HRP-conjugated goat anti-rabbit secondary antibody (Cat#201, 1:20,000) respectively. Image was developed using NaQ™ ECL Substrate Kit (Cat#716).