

# Anti-UBE2T Recombinant Rabbit Monoclonal Antibody



**Catalog #: 4454**

## Aliases

UBE2T; Ubiquitin Conjugating Enzyme E2 T; HSPC150; FANCT; Cell Proliferation-Inducing Gene 50 Protein; Ubiquitin-Conjugating Enzyme E2 T; E2 Ubiquitin-Conjugating Enzyme T; Ubiquitin Carrier Protein T; Ubiquitin-Protein Ligase T; HSPC150 Protein Similar To Ubiquitin-Conjugating Enzyme; Ubiquitin-Conjugating Enzyme E2T (Putative); Ubiquitin-Conjugating Enzyme E2T; Ubiquitin Conjugating Enzyme E2T; EC 2.3.2.23; PIG50

## Background

Gene Name: UBE2T

NCBI Gene Entry: [29089](#)

UniProt Entry: [Q9NPD8](#)

## Application Information

Molecular Weight: Predicted, 23 kDa; observed, 23 kDa

Clonality: Rabbit monoclonal antibody

Clone ID: 24GB11300

Species Reactivity: Human

Applications Tested: Western blotting (WB), flow cytometry (FCM), immunocytochemistry (IC)

## Immunogen

A synthesized peptide derived from human HSPC150

## Isotype

Rabbit IgG

## Storage Buffer

Supplied in PBS (pH 7.4) containing 50% glycerol, and 0.02% sodium azide.

## Storage

Store at -20 °C for one year.

## Recommended Dilutions

Western Blotting (WB): 1:1,000-1:5,000

Flow Cytometry (FCM): 1:2,000

Immunocytochemistry (IC): 1:100-1:1,000

---

### SUPPORT

SUPPORT@GENUINBIOTECH.COM  
TEL: +1-540-855-7041

### ORDERS

SALES@GENUINBIOTECH.COM  
FAX: +1-540-855-7041

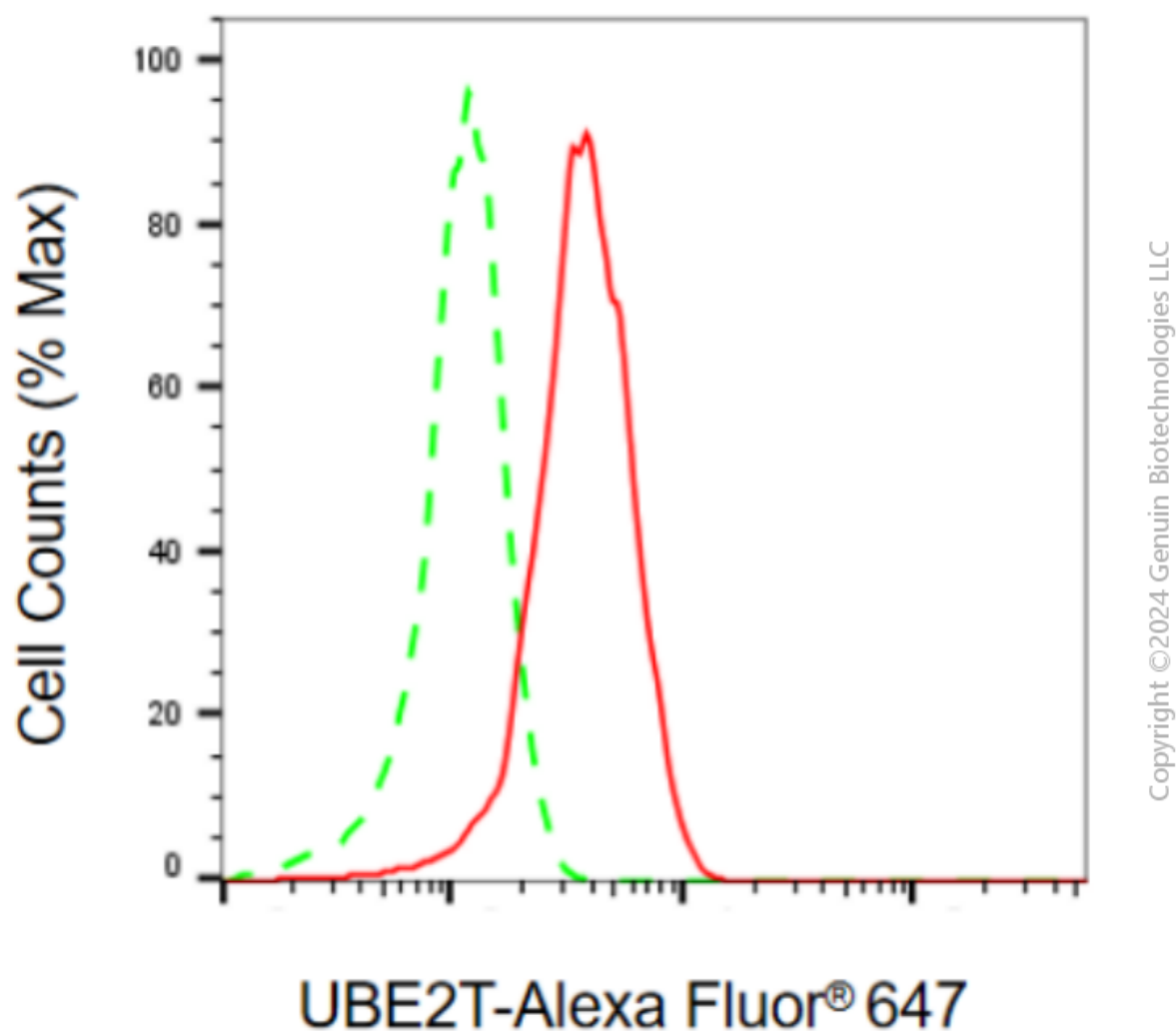
[WWW.GENUINBIOTECH.COM](http://WWW.GENUINBIOTECH.COM)

# Anti-UBE2T Recombinant Rabbit Monoclonal Antibody

PAGE 2

**Note:** This product is for research use only.

## Validation Data



Flow cytometric analysis of UBE2T expression in HepG2 cells using anti-UBE2T antibody (Cat#4454, 1:2,000). Green, isotype control; red, UBE2T.

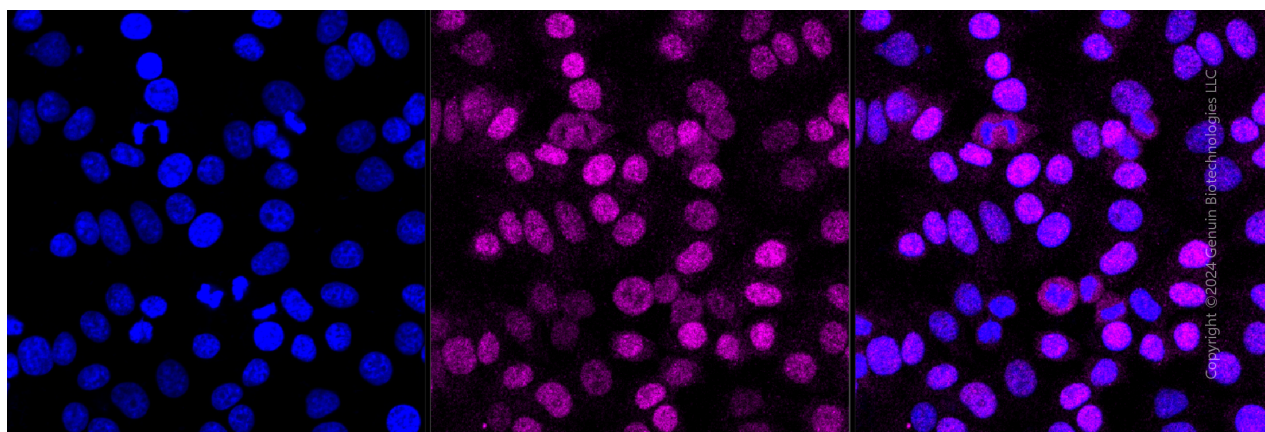
### SUPPORT

SUPPORT@GENUINBIOTECH.COM  
TEL: +1-540-855-7041

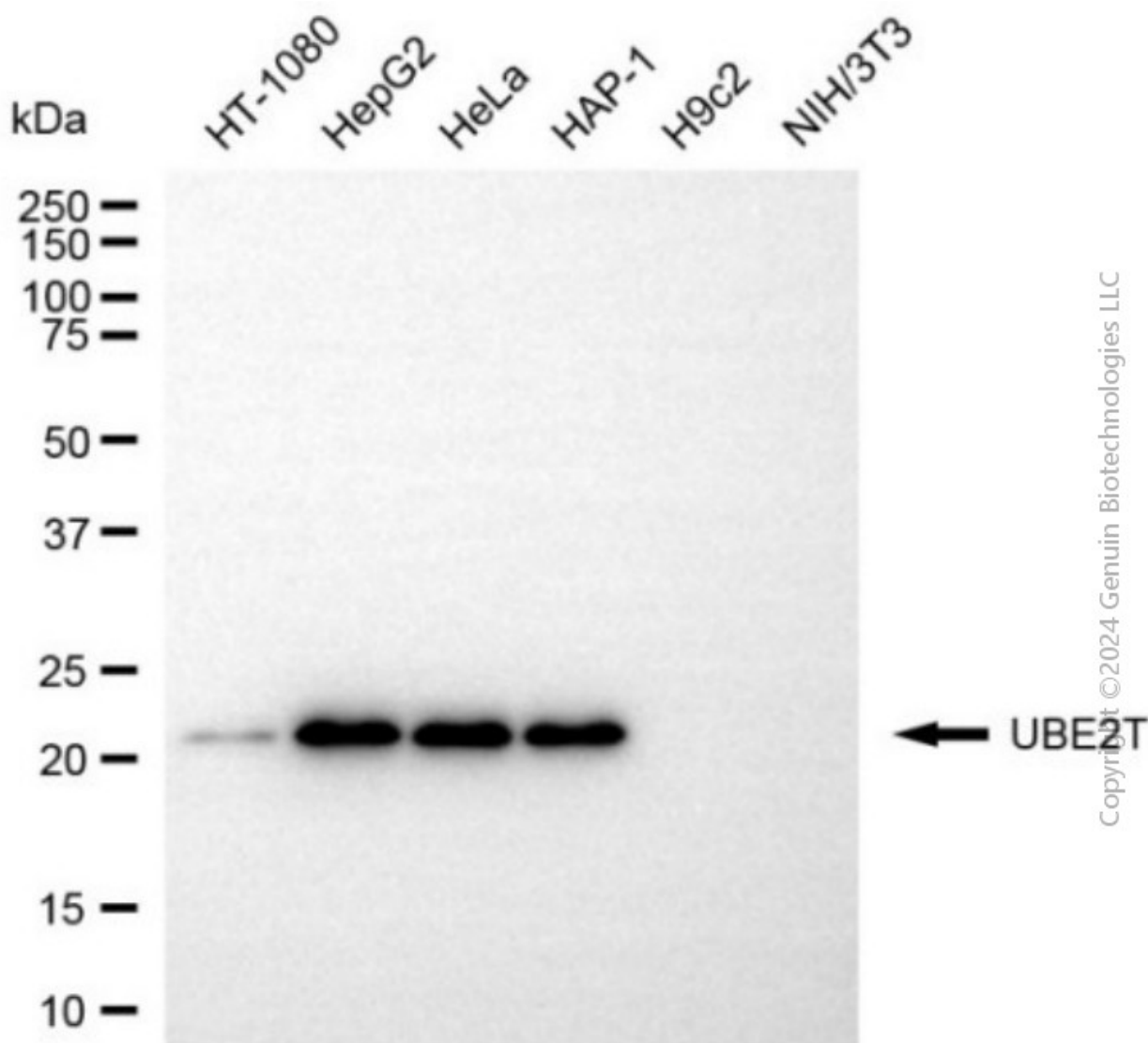
### ORDERS

SALES@GENUINBIOTECH.COM  
FAX: +1-540-855-7041

[WWW.GENUINBIOTECH.COM](http://WWW.GENUINBIOTECH.COM)



Immunocytochemical staining of HepG2 cells with anti-UBE2T antibody (Cat#4454, 1:1,000). Nuclei were stained blue with DAPI; UBE2T was stained magenta with Alexa Fluor® 647. Images were taken using Leica stellaris 5. Protein abundance based on laser Intensity and smart gain: Medium. Scale bar, 20  $\mu$ m.



Western blotting analysis using anti-UBE2T antibody (Cat#4454). Total cell lysates (30 µg) from various cell lines were loaded and separated by SDS-PAGE. The blot was incubated with anti-UBE2T antibody (Cat#4454, 1:5,000) and HRP-conjugated goat anti-rabbit secondary antibody (Cat#201, 1:20,000) respectively. Image was developed using NaQ™ ECL Substrate Kit (Cat#716).