

# Anti-CDC73 Recombinant Rabbit Monoclonal Antibody



**Catalog #: 4456**

## Aliases

CDC73; Cell Division Cycle 73; Parafibromin; HRPT2; FIHP; Paf1/RNA Polymerase II Complex Component; Cell Division Cycle Protein 73 Homolog; Familial Isolated Hyperparathyroidism; Hyperparathyroidism 2 Protein; C1orf28; HRPT1; Cell Division Cycle 73, Paf1/RNA Polymerase II Complex Component, Homolog (S. Cerevisiae); Cell Division Cycle 73 Paf1/RNA Polymerase II Complex Component-Like Protein; Cell Division Cycle 73, Paf1/RNA Polymerase II Complex Component, Homolog; Hyperparathyroidism 2 (With Jaw Tumor); Chromosome 1 Open Reading Frame 28; Hyperparathyroidism 1; PARAFIBROMIN; C1ORF28; HPTJT; HYX

## Background

Gene Name: CDC73

NCBI Gene Entry: [79577](#)

UniProt Entry: [Q6P1J9](#)

## Application Information

Molecular Weight: Predicted, 61 kDa; observed, 61 kDa

Clonality: Rabbit monoclonal antibody

Clone ID: 24GB11310

Species Reactivity: Human, mouse, rat

Applications Tested: Western blotting (WB), flow cytometry (FCM), immunocytochemistry (IC)

## Immunogen

A synthesized peptide derived from human HRPT2 / CDC73

## Isotype

Rabbit IgG

## Storage Buffer

Supplied in PBS (pH 7.4) containing 50% glycerol, and 0.02% sodium azide.

## Storage

Store at -20 °C for one year.

## Recommended Dilutions

Western Blotting (WB): 1:1,000-1:5,000

Flow Cytometry (FCM): 1:2,000

---

### SUPPORT

SUPPORT@GENUINBIOTECH.COM  
TEL: +1-540-855-7041

### ORDERS

SALES@GENUINBIOTECH.COM  
FAX: +1-540-855-7041

[WWW.GENUINBIOTECH.COM](http://WWW.GENUINBIOTECH.COM)

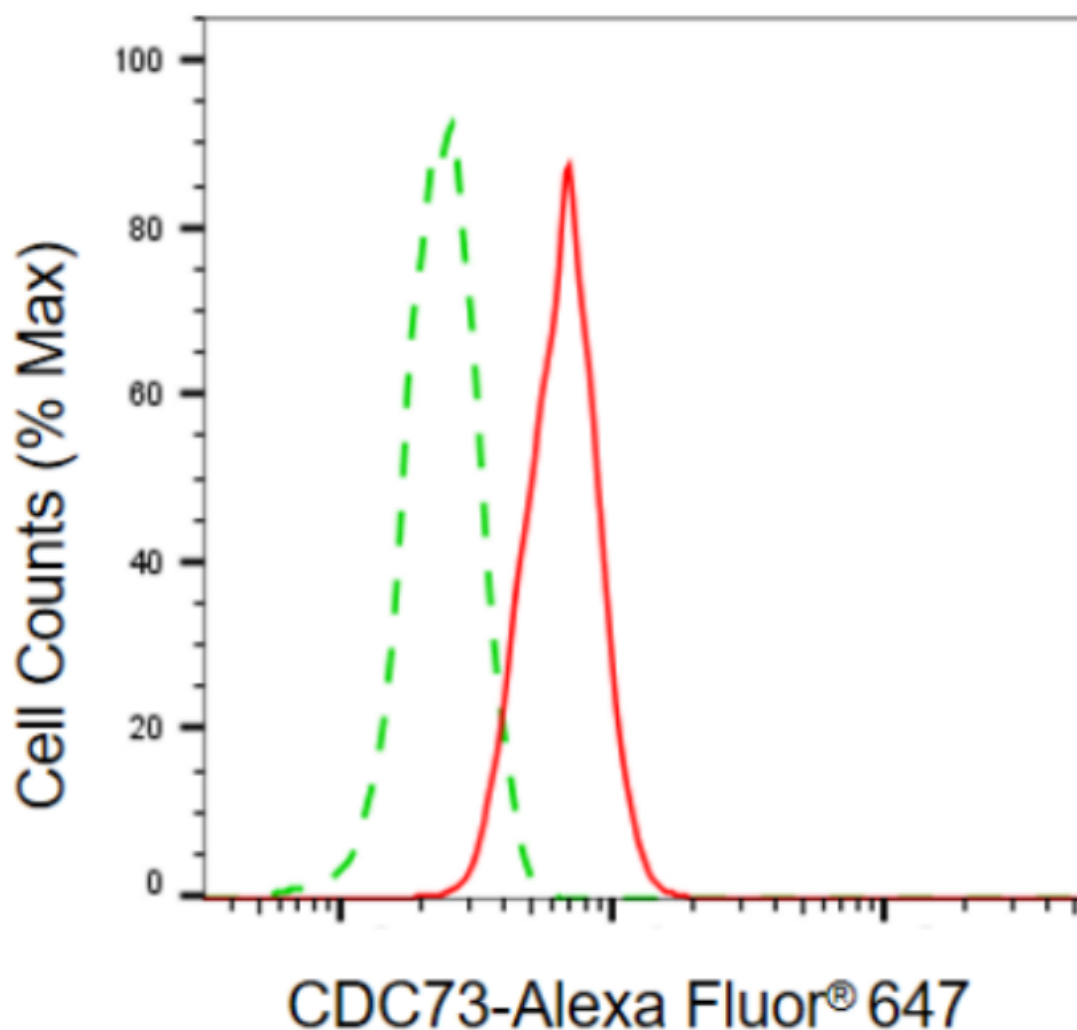
# Anti-CDC73 Recombinant Rabbit Monoclonal Antibody

PAGE 2

Immunocytochemistry (IC): 1:100-1:1,000

**Note:** This product is for research use only.

## Validation Data



Copyright ©2024 Genuin Biotechnologies LLC

Flow cytometric analysis of CDC73 expression in C2C12 cells using anti-CDC73 antibody (Cat#4456, 1:2,000). Green, isotype control; red, CDC73.

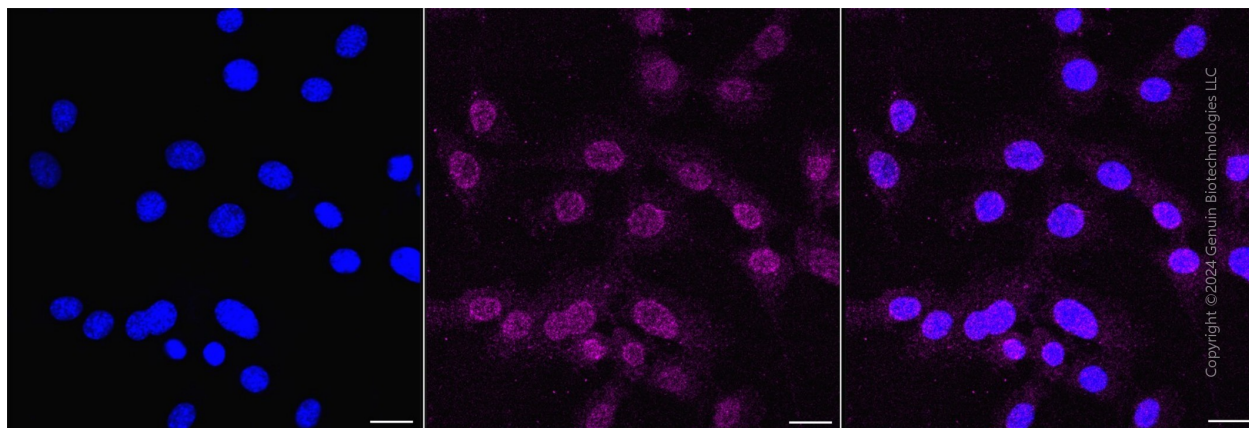
### SUPPORT

SUPPORT@GENUINBIOTECH.COM  
TEL: +1-540-855-7041

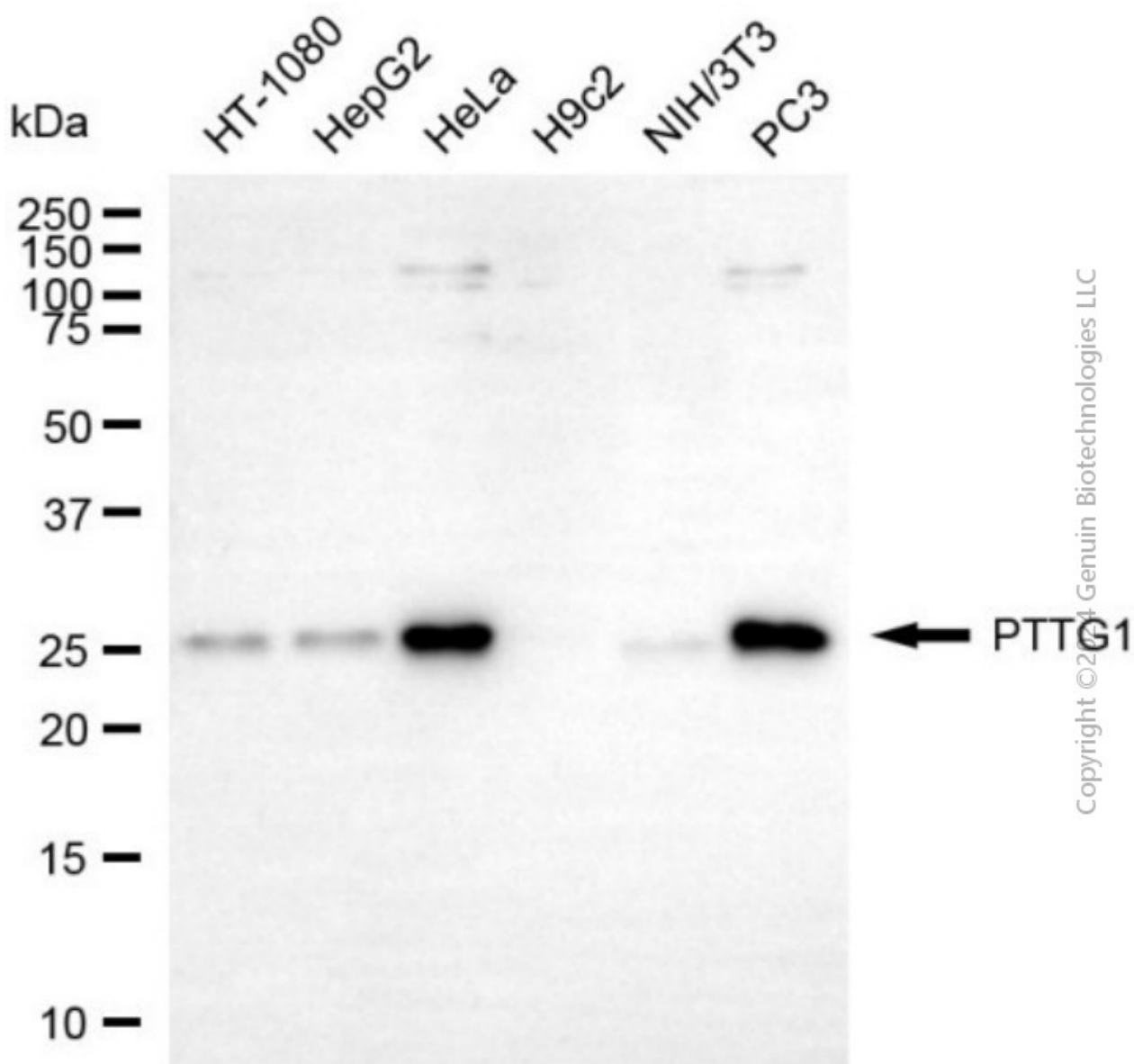
### ORDERS

SALES@GENUINBIOTECH.COM  
FAX: +1-540-855-7041

[WWW.GENUINBIOTECH.COM](http://WWW.GENUINBIOTECH.COM)



Immunocytochemical staining of C2C12 cells with anti-CDC73 antibody (Cat#4456, 1:1,000). Nuclei were stained blue with DAPI; CDC73 was stained magenta with Alexa Fluor® 647. Images were taken using Leica stellaris 5. Protein abundance based on laser Intensity and smart gain: Low. Scale bar, 20  $\mu$ m.



Western blotting analysis using anti-CDC73 antibody (Cat#4456). Total cell lysates (30 µg) from various cell lines were loaded and separated by SDS-PAGE. The blot was incubated with anti-CDC73 antibody (Cat#4456, 1:5,000) and HRP-conjugated goat anti-rabbit secondary antibody (Cat#201, 1:20,000) respectively. Image was developed using NaQ™ ECL Substrate Kit (Cat#716).