

# Anti-GEMIN2 Recombinant Rabbit Monoclonal Antibody



**Catalog #: 4461**

## Aliases

GEMIN2; Gem Nuclear Organelle Associated Protein 2; SIP1; Survival Of Motor Neuron Protein Interacting Protein 1; Gem-Associated Protein; Component Of Gems; Gemin-2; Survival Of Motor Neuron Protein-Interacting Protein 1; Gem (Nuclear Organelle) Associated Protein 2; SMN Interacting Protein 1-Delta; SMN-Interacting Protein 1; SIP1-Delta

## Background

Gene Name: GEMIN2

NCBI Gene Entry: [8487](#)

UniProt Entry: [O14893](#)

## Application Information

Molecular Weight: Predicted, 32 kDa; observed, 31 kDa

Clonality: Rabbit monoclonal antibody

Clone ID: 24GB11335

Species Reactivity: Human, mouse, rat

Applications Tested: Western blotting (WB), flow cytometry (FCM), immunocytochemistry (IC)

## Immunogen

A synthesized peptide derived from human Gemin 2

## Isotype

Rabbit IgG

## Storage Buffer

Supplied in PBS (pH 7.4) containing 50% glycerol, and 0.02% sodium azide.

## Storage

Store at -20 °C for one year.

## Recommended Dilutions

Western Blotting (WB): 1:1,000-1:5,000

Flow Cytometry (FCM): 1:2,000

Immunocytochemistry (IC): 1:100-1:1,000

---

### SUPPORT

SUPPORT@GENUINBIOTECH.COM  
TEL: +1-540-855-7041

### ORDERS

SALES@GENUINBIOTECH.COM  
FAX: +1-540-855-7041

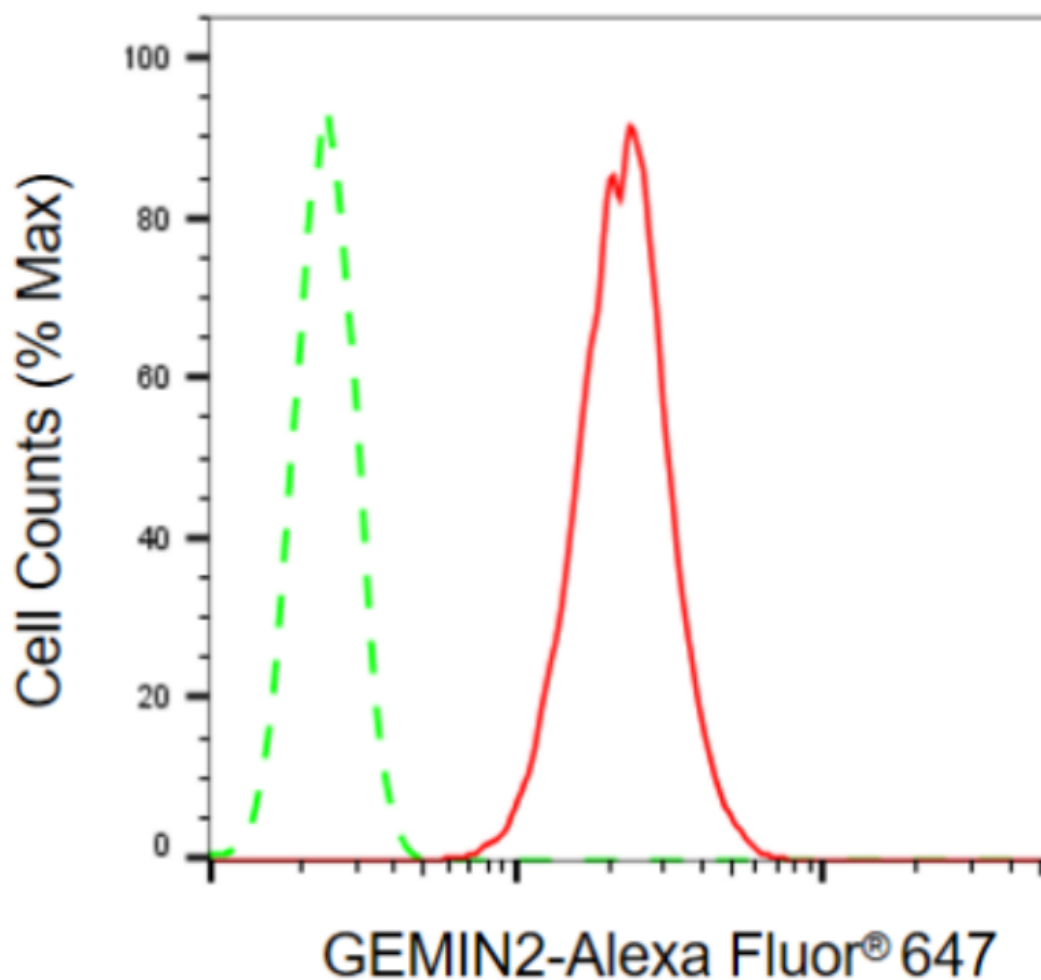
[WWW.GENUINBIOTECH.COM](http://WWW.GENUINBIOTECH.COM)

# Anti-GEMIN2 Recombinant Rabbit Monoclonal Antibody

PAGE 2

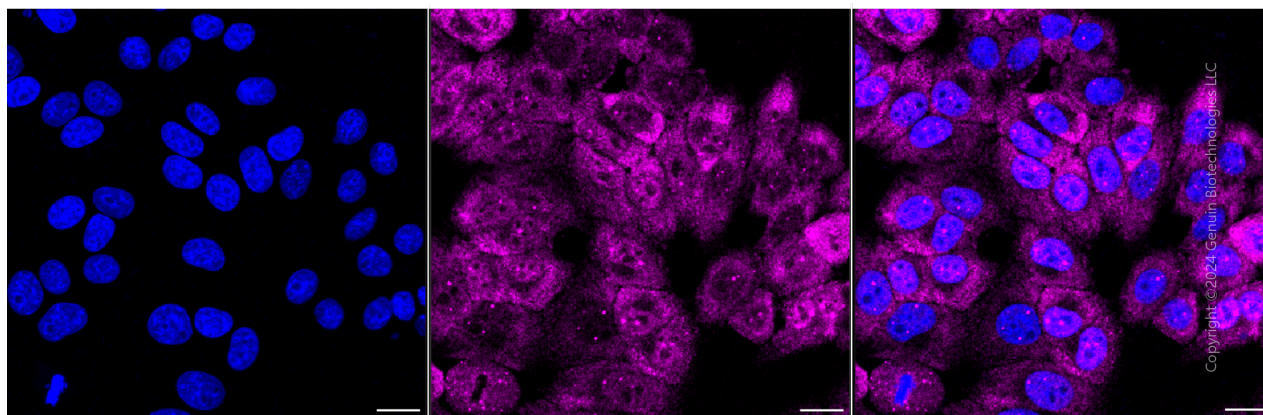
**Note:** This product is for research use only.

## Validation Data



Copyright ©2024 Genuin Biotechnologies LLC

Flow cytometric analysis of GEMIN2 expression in HepG2 cells using anti-GEMIN2 antibody (Cat#4461, 1:2,000). Green, isotype control; red, GEMIN2.



Copyright ©2024 Genuin Biotechnologies LLC

### SUPPORT

SUPPORT@GENUINBIOTECH.COM  
TEL: +1-540-855-7041

### ORDERS

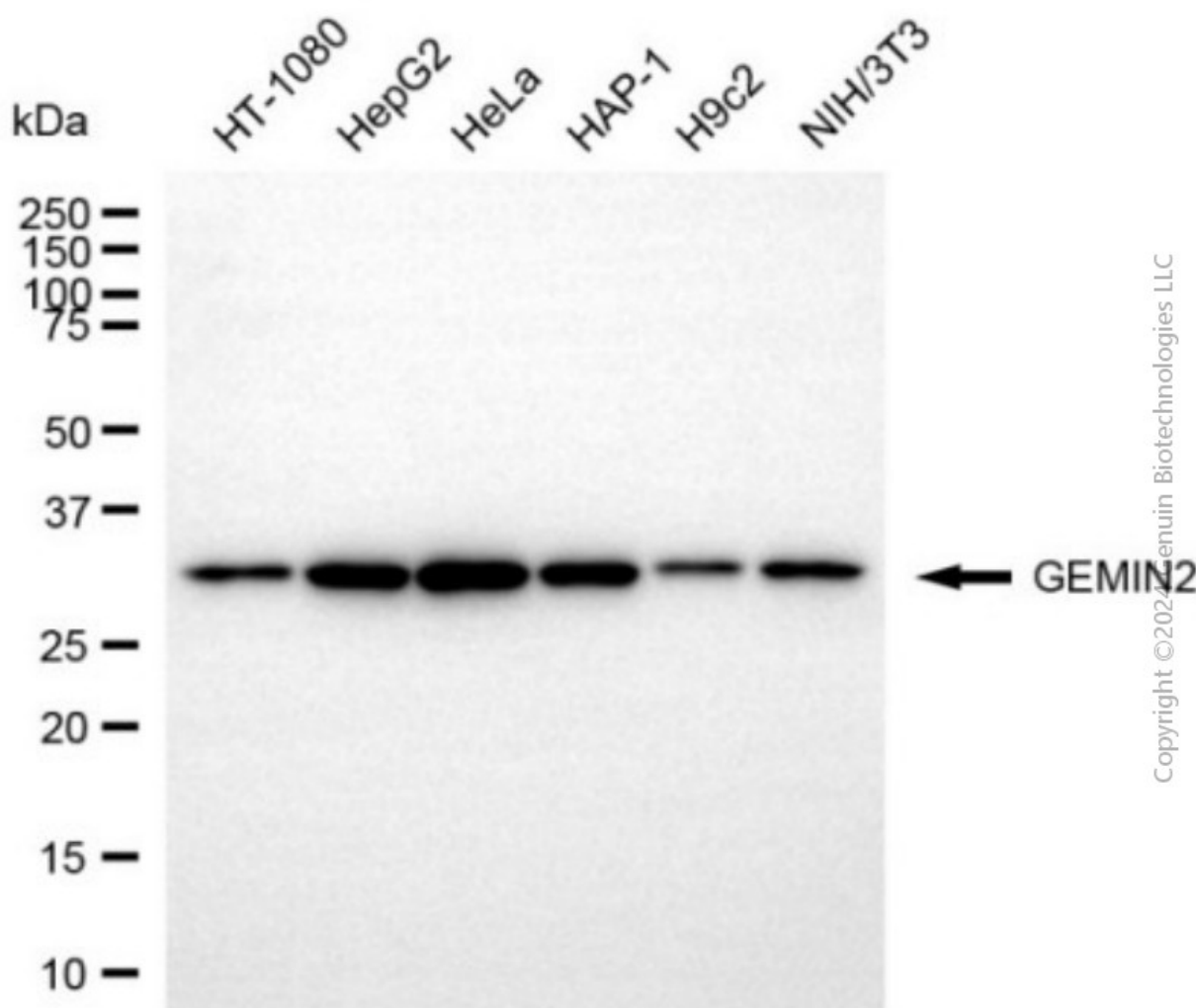
SALES@GENUINBIOTECH.COM  
FAX: +1-540-855-7041

WWW.GENUINBIOTECH.COM

## Anti-GEMIN2 Recombinant Rabbit Monoclonal Antibody

PAGE 3

Immunocytochemical staining of HepG2 cells with anti-GEMIN2 antibody (Cat#4461, 1:1,000). Nuclei were stained blue with DAPI; GEMIN2 was stained magenta with Alexa Fluor® 647. Images were taken using Leica stellaris 5. Protein abundance based on laser Intensity and smart gain: Medium. Scale bar, 20  $\mu$ m.



Western blotting analysis using anti-GEMIN2 antibody (Cat#4461). Total cell lysates (30  $\mu$ g) from various cell lines were loaded and separated by SDS-PAGE. The blot was incubated with anti-GEMIN2 antibody (Cat#4461, 1:5,000) and HRP-conjugated goat anti-rabbit secondary antibody (Cat#201, 1:20,000) respectively. Image was developed using NaQ™ ECL Substrate Kit (Cat#716).

### SUPPORT

SUPPORT@GENUINBIOTECH.COM  
TEL: +1-540-855-7041

### ORDERS

SALES@GENUINBIOTECH.COM  
FAX: +1-540-855-7041

WWW.GENUINBIOTECH.COM