

Anti-Glucose 6 phosphate isomerase Recombinant Rabbit Monoclonal Antibody



Catalog #: 4470

Aliases

GPI; Glucose-6-Phosphate Isomerase; AMF; NLK; Autocrine Motility Factor; Phosphoglucose Isomerase; Phosphohexose Isomerase; Neuroleukin; EC 5.3.1.9; SA-36; PGI; PHI; Hexose Monophosphate Isomerase; Glucose Phosphate Isomerase; Hexosephosphate Isomerase; Phosphosaccharomutase; Phosphohexomutase; Sperm Antigen-36; Sperm Antigen 36; Oxoisomerase; GNPI; SA36

Background

Gene Name: GPI

NCBI Gene Entry: [2821](#)

UniProt Entry: [P06744](#)

Application Information

Molecular Weight: Predicted, 63 kDa; observed, 58 kDa

Clonality: Rabbit monoclonal antibody

Clone ID: 24GB11380

Species Reactivity: Human

Applications Tested: Western blotting (WB), flow cytometry (FCM), immunocytochemistry (IC)

Immunogen

A synthesized peptide derived from human Glucose 6 phosphate isomerase

Isotype

Rabbit IgG

Storage Buffer

Supplied in PBS (pH 7.4) containing 50% glycerol, and 0.02% sodium azide.

Storage

Store at -20 °C for one year.

Recommended Dilutions

Western Blotting (WB): 1:1,000-1:5,000

Flow Cytometry (FCM): 1:2,000

Immunocytochemistry (IC): 1:100-1:1,000

SUPPORT

SUPPORT@GENUINBIOTECH.COM
TEL: +1-540-855-7041

ORDERS

SALES@GENUINBIOTECH.COM
FAX: +1-540-855-7041

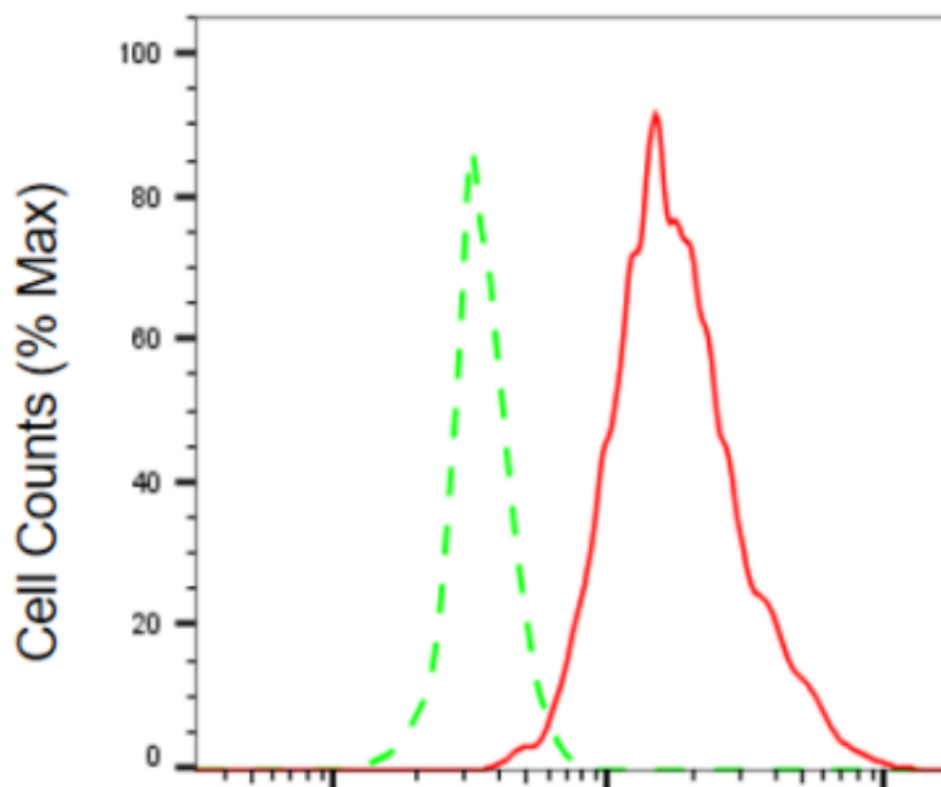
WWW.GENUINBIOTECH.COM

Anti-Glucose 6 phosphate isomerase Recombinant Rabbit Monoclonal Antibody

PAGE 2

Note: This product is for research use only.

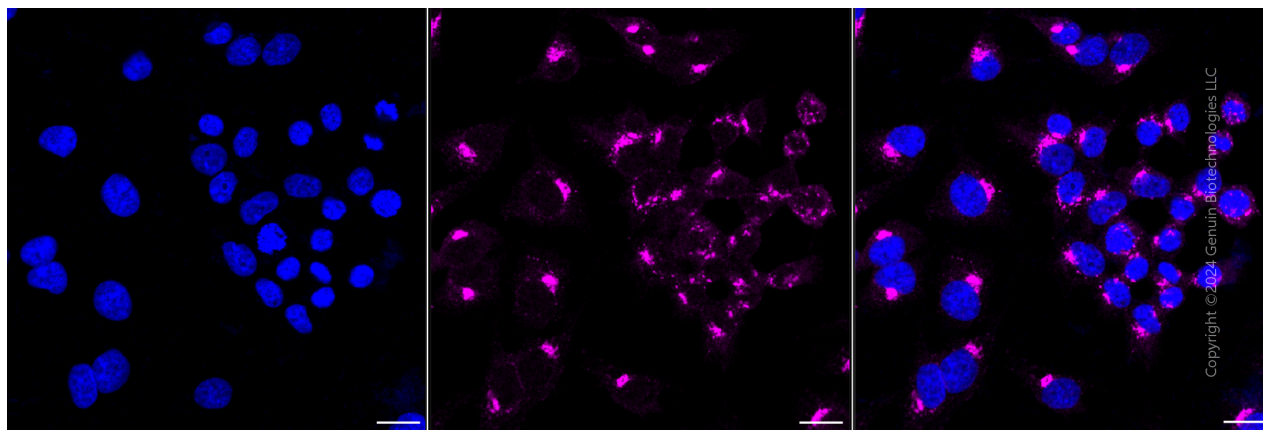
Validation Data



Copyright ©2024 Genuin Biotechnologies LLC

Glucose-6-phosphate isomerase-Alexa Fluor® 647

Flow cytometric analysis of glucose-6-phosphate isomerase expression in Hela cells using anti-glucose-6-phosphate isomerase antibody (Cat#4470, 1:2,000). Green, isotype control; red, glucose-6-phosphate isomerase.



Copyright ©2024 Genuin Biotechnologies LLC

SUPPORT

SUPPORT@GENUINBIOTECH.COM
TEL: +1-540-855-7041

ORDERS

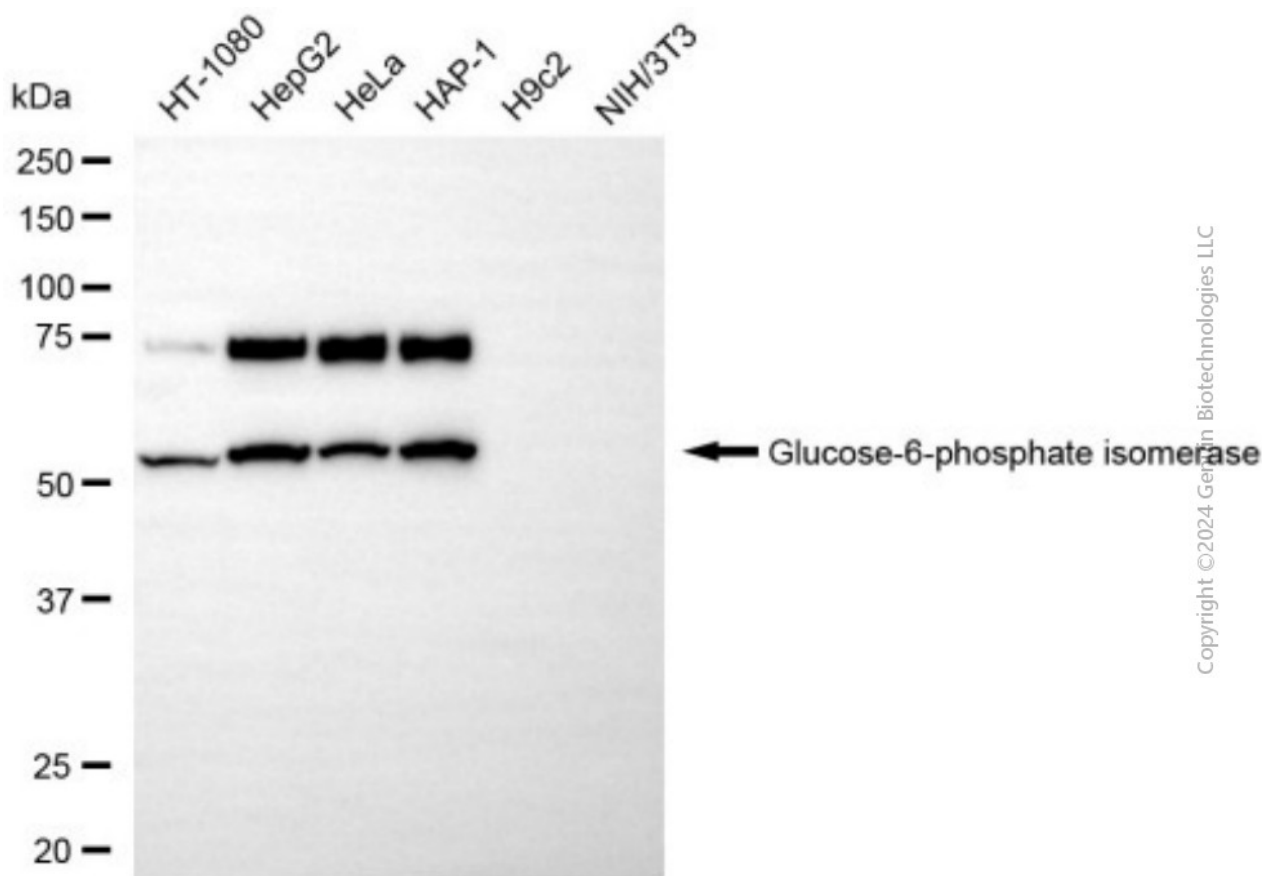
SALES@GENUINBIOTECH.COM
FAX: +1-540-855-7041

WWW.GENUINBIOTECH.COM

Anti-Glucose 6 phosphate isomerase Recombinant Rabbit Monoclonal Antibody

PAGE 3

Immunocytochemical staining of Hela cells with anti-glucose-6-phosphate isomerase antibody (Cat#4470, 1:1,000). Nuclei were stained blue with DAPI; Glucose-6-phosphate isomerase was stained magenta with Alexa Fluor® 647. Images were taken using Leica stellaris 5. Protein abundance based on laser Intensity and smart gain: Medium. Scale bar, 20 μ m.



Copyright ©2024 Genin Biotechnologies LLC

Western blotting analysis using anti-glucose-6-phosphate isomerase antibody (Cat#4470). Total cell lysates (30 μ g) from various cell lines were loaded and separated by SDS-PAGE. The blot was incubated with anti-glucose-6-phosphate isomerase antibody (Cat#4470, 1:5,000) and HRP-conjugated goat anti-rabbit secondary antibody (Cat#201, 1:20,000) respectively. Image was developed using NaQ™ ECL Substrate Kit (Cat#716).

SUPPORT

SUPPORT@GENUINBIOTECH.COM
TEL: +1-540-855-7041

ORDERS

SALES@GENUINBIOTECH.COM
FAX: +1-540-855-7041

WWW.GENUINBIOTECH.COM