

Anti-SMCHD1 Recombinant Rabbit Monoclonal Antibody



Catalog #: 4478

Aliases

SMCHD1; Structural Maintenance Of Chromosomes Flexible Hinge Domain Containing 1; KIAA0650; FSHD2; Structural Maintenance Of Chromosomes Flexible Hinge Domain-Containing Protein 1; SMC Hinge Domain-Containing Protein 1; EC 3.6.1.-; BAMS

Background

Gene Name: SMCHD1

NCBI Gene Entry: [23347](#)

UniProt Entry: [A6NHR9](#)

Application Information

Molecular Weight: Predicted, 226 kDa; observed, 226 kDa

Clonality: Rabbit monoclonal antibody

Clone ID: 24GB11420

Species Reactivity: Human, rat

Applications Tested: Western blotting (WB), immunocytochemistry (IC)

Immunogen

A synthesized peptide derived from human SMCHD1

Isotype

Rabbit IgG

Storage Buffer

Supplied in PBS (pH 7.4) containing 50% glycerol, and 0.02% sodium azide.

Storage

Store at -20 °C for one year.

Recommended Dilutions

Western Blotting (WB): 1:1,000-1:5,000

Immunocytochemistry (IC): 1:100-1:1,000

Note: This product is for research use only.

Validation Data

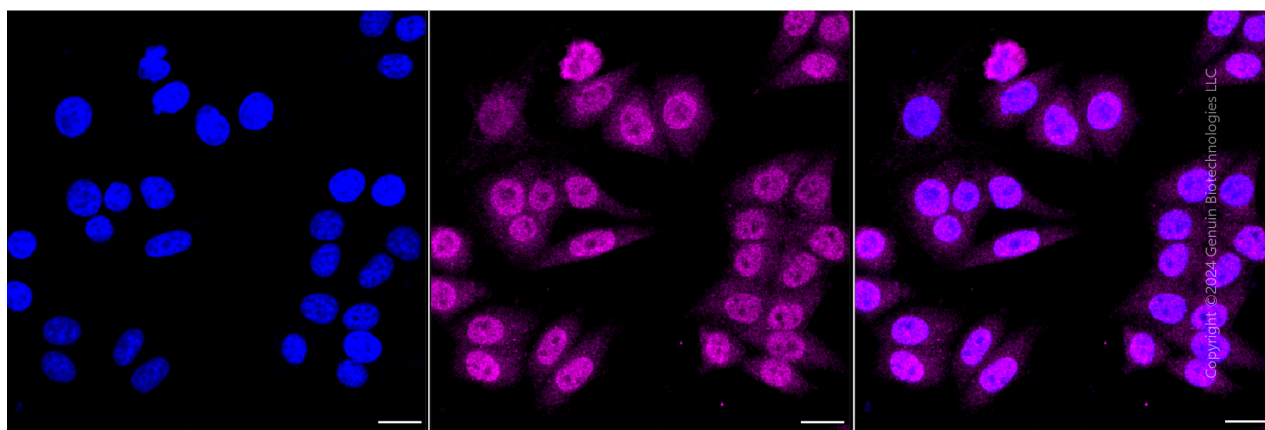
SUPPORT

SUPPORT@GENUINBIOTECH.COM
TEL: +1-540-855-7041

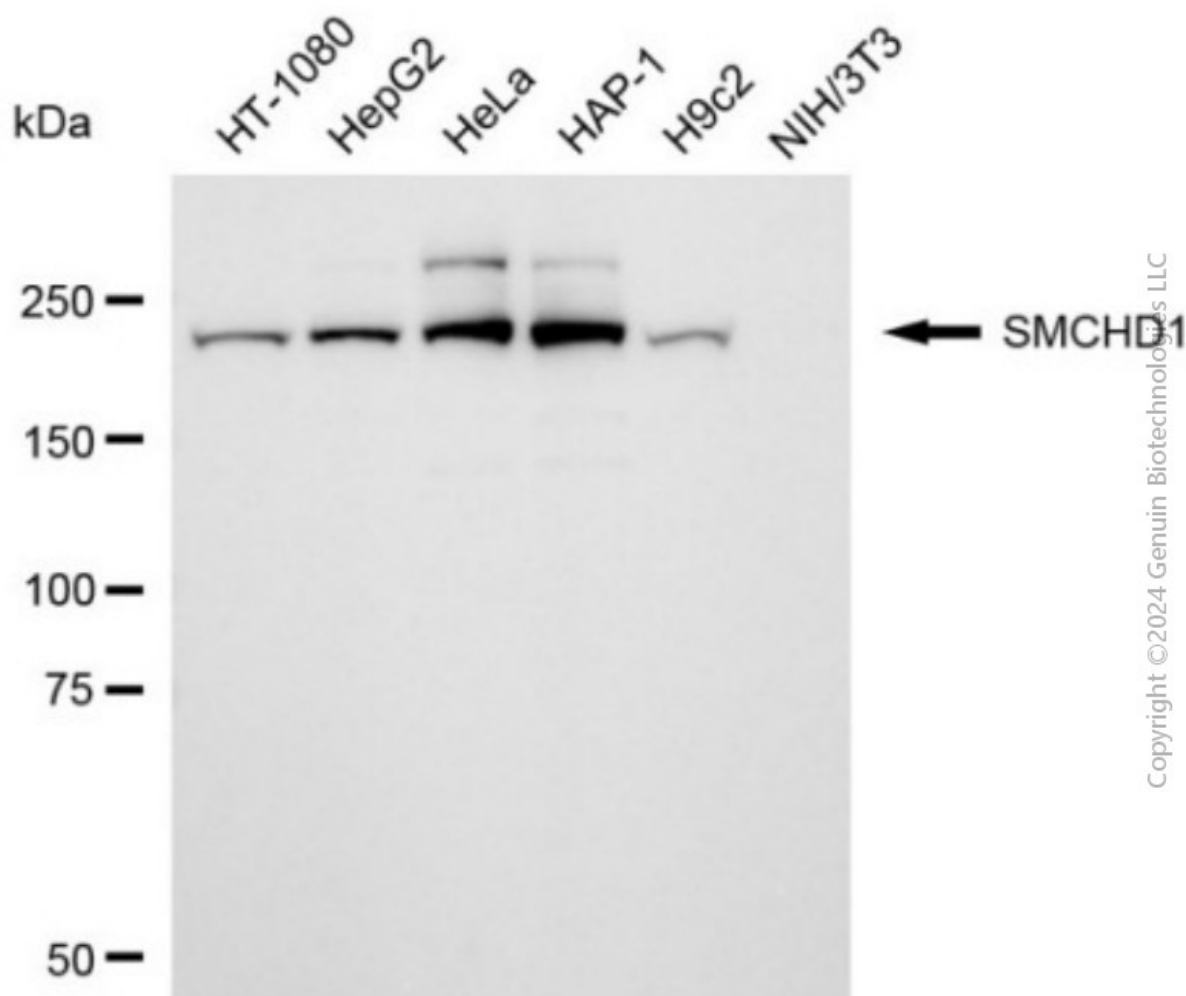
ORDERS

SALES@GENUINBIOTECH.COM
FAX: +1-540-855-7041

WWW.GENUINBIOTECH.COM



Immunocytochemical staining of HepG2 cells with anti-SMCHD1 antibody (Cat#4478, 1:1,000). Nuclei were stained blue with DAPI; SMCHD1 was stained magenta with Alexa Fluor® 647. Images were taken using Leica stellaris 5. Protein abundance based on laser Intensity and smart gain: Medium. Scale bar, 20 μ m.



Anti-SMCHD1 Recombinant Rabbit Monoclonal Antibody

PAGE 3

Western blotting analysis using anti-SMCHD1 antibody (Cat#4478). Total cell lysates (30 µg) from various cell lines were loaded and separated by SDS-PAGE. The blot was incubated with anti-SMCHD1 antibody (Cat#4478, 1:5,000) and HRP-conjugated goat anti-rabbit secondary antibody (Cat#201, 1:20,000) respectively. Image was developed using NaQ™ ECL Substrate Kit (Cat#716).

SUPPORT

SUPPORT@GENUINBIOTECH.COM
TEL: +1-540-855-7041

ORDERS

SALES@GENUINBIOTECH.COM
FAX: +1-540-855-7041

WWW.GENUINBIOTECH.COM