

Anti-SMARCC1 Recombinant Rabbit Monoclonal Antibody



Catalog #: 4480

Aliases

SMARCC1; SWI/SNF Related, Matrix Associated, Actin Dependent Regulator Of Chromatin Subfamily C Member 1; BAF155; CRACC1; SRG3; SWI/SNF-Related Matrix-Associated Actin-Dependent Regulator Of Chromatin Subfamily C Member 1; SWI/SNF Complex Subunit SMARCC1; SWI/SNF Complex 155 KDa Subunit; BRG1-Associated Factor 155; Rsc8; SWI/SNF Related, Matrix Associated, Actin Dependent Regulator Of; Chromatin, Subfamily C, Member 1; Mammalian Chromatin Remodeling Complex BRG1-Associated Factor 155; Chromatin Remodeling Complex BAF155 Subunit; HYC5; SWI3; RSC8

Background

Gene Name: SMARCC1

NCBI Gene Entry: [6599](#)

UniProt Entry: [Q92922](#)

Application Information

Molecular Weight: Predicted, 123 kDa; observed, 155 kDa

Clonality: Rabbit monoclonal antibody

Clone ID: 24GB11430

Species Reactivity: Human, mouse, rat

Applications Tested: Western blotting (WB), flow cytometry (FCM), immunocytochemistry (IC)

Immunogen

A synthesized peptide derived from human SMARCC1/BAF155

Isotype

Rabbit IgG

Storage Buffer

Supplied in PBS (pH 7.4) containing 50% glycerol, and 0.02% sodium azide.

Storage

Store at -20 °C for one year.

Recommended Dilutions

Western Blotting (WB): 1:1,000-1:5,000

Flow Cytometry (FCM): 1:2,000

SUPPORT

SUPPORT@GENUINBIOTECH.COM
TEL: +1-540-855-7041

ORDERS

SALES@GENUINBIOTECH.COM
FAX: +1-540-855-7041

WWW.GENUINBIOTECH.COM

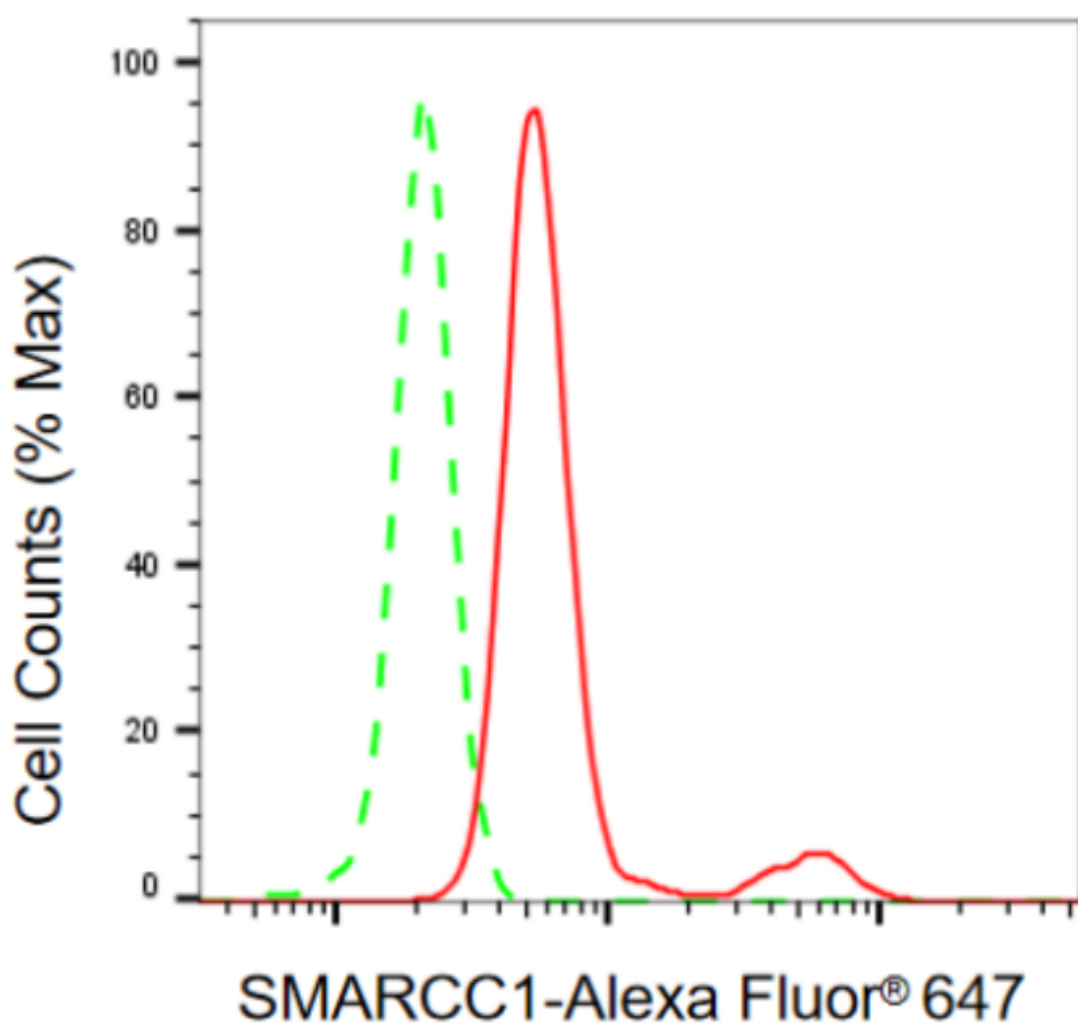
Anti-SMARCC1 Recombinant Rabbit Monoclonal Antibody

PAGE 2

Immunocytochemistry (IC): 1:100-1:1,000

Note: This product is for research use only.

Validation Data



Copyright ©2024 Genuin Biotechnologies LLC

Flow cytometric analysis of SMARCC1 expression in HepG2 cells using anti-SMARCC1 antibody (Cat#4480, 1:2,000). Green, isotype control; red, SMARCC1.

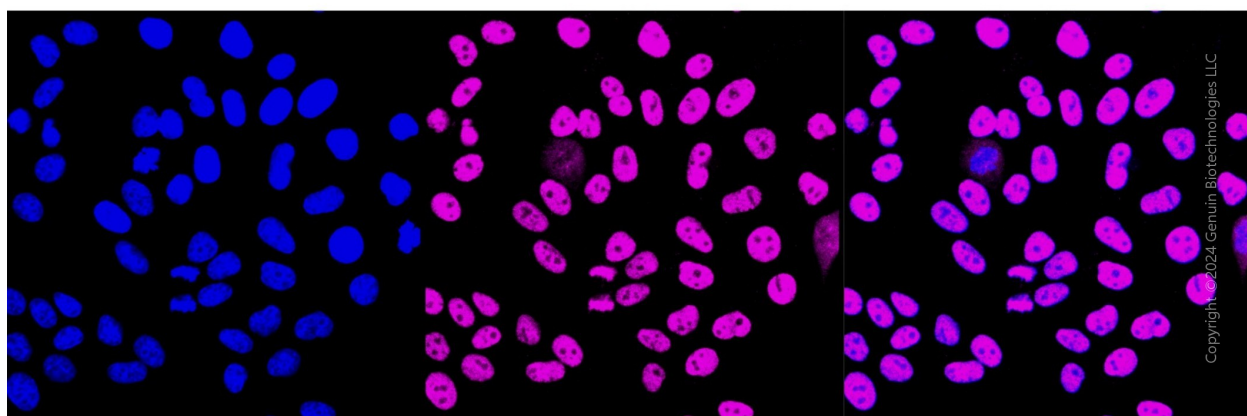
SUPPORT

SUPPORT@GENUINBIOTECH.COM
TEL: +1-540-855-7041

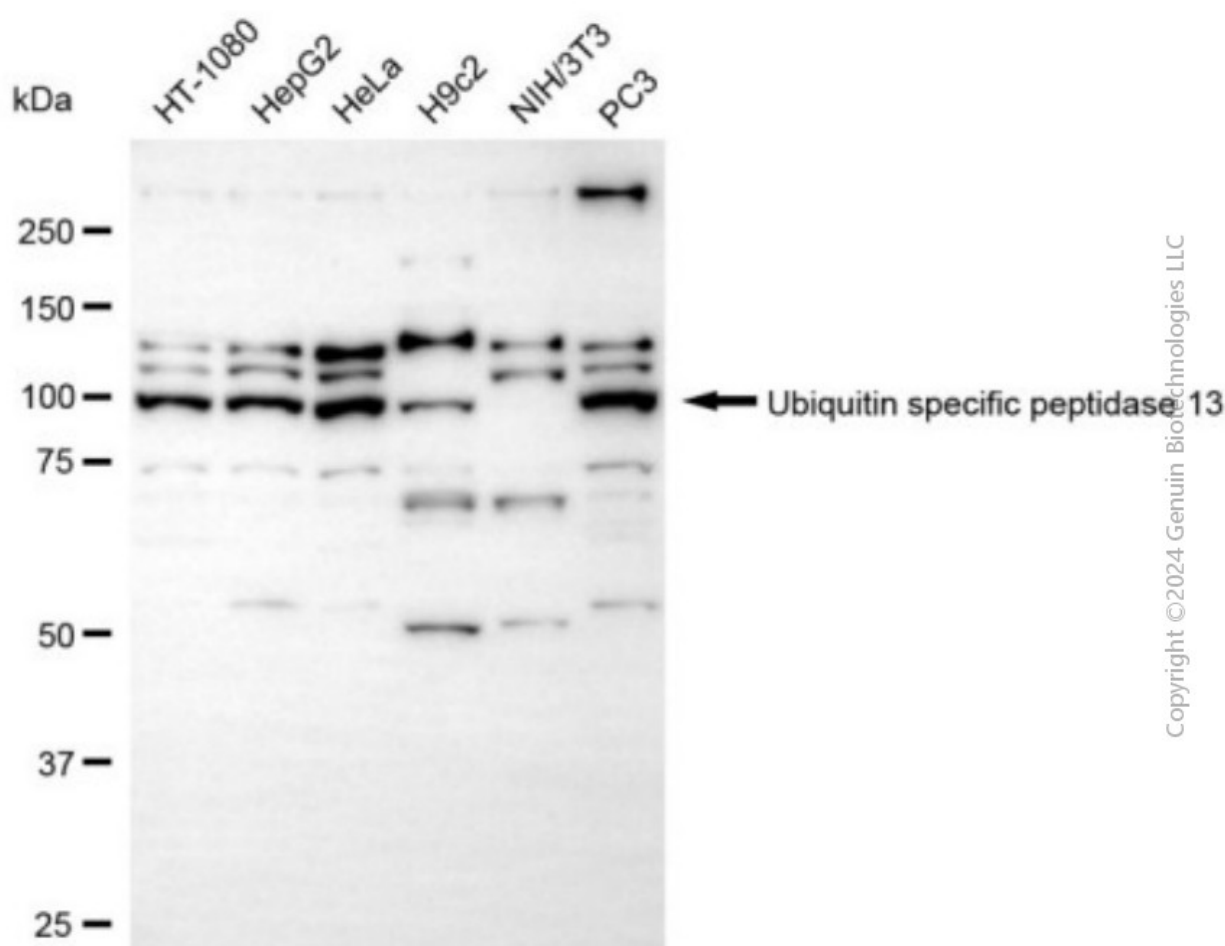
ORDERS

SALES@GENUINBIOTECH.COM
FAX: +1-540-855-7041

WWW.GENUINBIOTECH.COM



Immunocytochemical staining of HepG2 cells with anti-SMARCC1 antibody (Cat#4480, 1:1,000). Nuclei were stained blue with DAPI; SMARCC1 was stained magenta with Alexa Fluor® 647. Images were taken using Leica stellaris 5. Protein abundance based on laser Intensity and smart gain: Medium. Scale bar, 20 μ m.



Western blotting analysis using anti-SMARCC1 antibody (Cat#4480). Total cell lysates (30 μ g) from various cell lines were loaded and separated by SDS-PAGE. The blot was incubated with

SUPPORT

SUPPORT@GENUINBIOTECH.COM
TEL: +1-540-855-7041

ORDERS

SALES@GENUINBIOTECH.COM
FAX: +1-540-855-7041

WWW.GENUINBIOTECH.COM

Anti-SMARCC1 Recombinant Rabbit Monoclonal Antibody

PAGE 4

anti-SMARCC1 antibody (Cat#4480, 1:5,000) and HRP-conjugated goat anti-rabbit secondary antibody (Cat#201, 1:20,000) respectively. Image was developed using NaQ™ ECL Substrate Kit (Cat#716).

SUPPORT

SUPPORT@GENUINBIOTECH.COM
TEL: +1-540-855-7041

ORDERS

SALES@GENUINBIOTECH.COM
FAX: +1-540-855-7041

WWW.GENUINBIOTECH.COM