

Anti-Golgi reassembly stacking protein 1 Recombinant Rabbit Monoclonal Antibody



Catalog #: 4481

Aliases

GORASP1; Golgi Reassembly Stacking Protein 1; GRASP65; Golgi Phosphoprotein 5; GOLPH5; P65; Golgi Reassembly-Stacking Protein Of 65 KDa; Golgi Reassembly Stacking Protein 1, 65kDa; Golgi Peripheral Membrane Protein P65; Golgi Reassembly-Stacking Protein 1; FLJ23443; Golgi Reassembly And Stacking Protein 1

Background

Gene Name: GORASP1

NCBI Gene Entry: [64689](#)

UniProt Entry: [Q9BQQ3](#)

Application Information

Molecular Weight: Predicted, 46 kDa; observed, 65 kDa

Clonality: Rabbit monoclonal antibody

Clone ID: 24GB11435

Species Reactivity: Human

Applications Tested: Western blotting (WB), flow cytometry (FCM), immunocytochemistry (IC)

Immunogen

A synthesized peptide derived from human GRASP65

Isotype

Rabbit IgG

Storage Buffer

Supplied in PBS (pH 7.4) containing 50% glycerol, and 0.02% sodium azide.

Storage

Store at -20 °C for one year.

Recommended Dilutions

Western Blotting (WB): 1:1,000-1:5,000

Flow Cytometry (FCM): 1:2,000

Immunocytochemistry (IC): 1:100-1:1,000

SUPPORT

SUPPORT@GENUINBIOTECH.COM
TEL: +1-540-855-7041

ORDERS

SALES@GENUINBIOTECH.COM
FAX: +1-540-855-7041

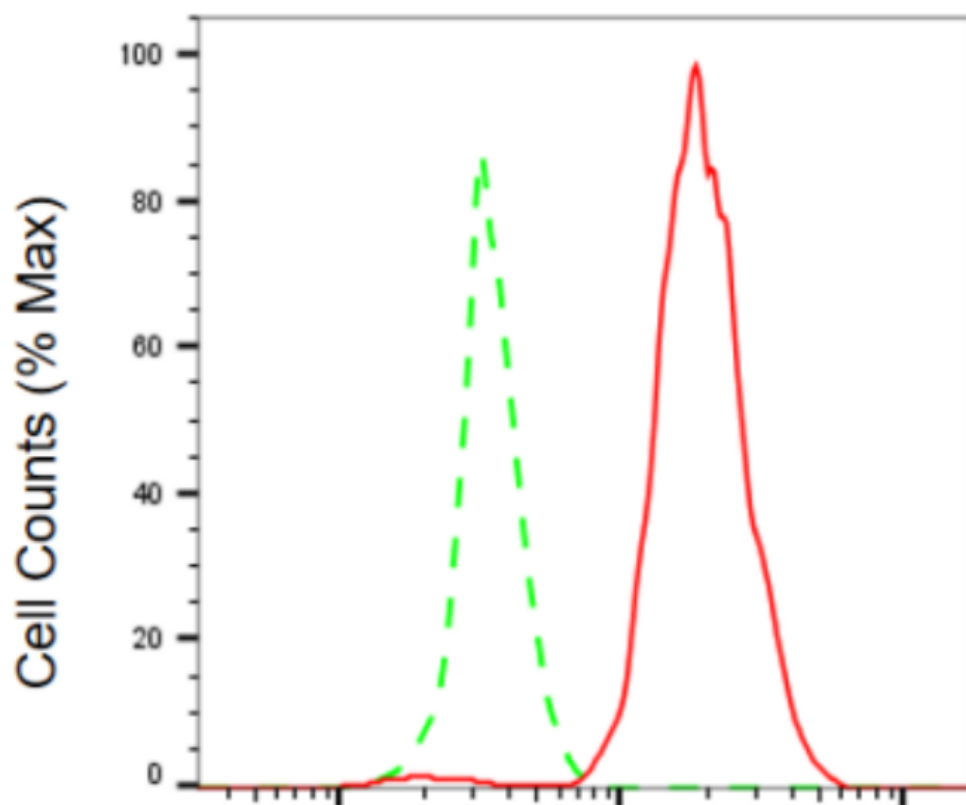
WWW.GENUINBIOTECH.COM

Anti-Golgi reassembly stacking protein 1 Recombinant Rabbit Monoclonal Antibody

PAGE 2

Note: This product is for research use only.

Validation Data



Copyright ©2024 Genuin Biotechnologies LLC

Golgi reassembly stacking protein 1-Alexa Fluor® 647

Flow cytometric analysis of golgi reassembly stacking protein 1 expression in HeLa cells using anti-golgi reassembly stacking protein 1 antibody (Cat#4481, 1:2,000). Green, isotype control; red, golgi reassembly stacking protein 1.

SUPPORT

SUPPORT@GENUINBIOTECH.COM
TEL: +1-540-855-7041

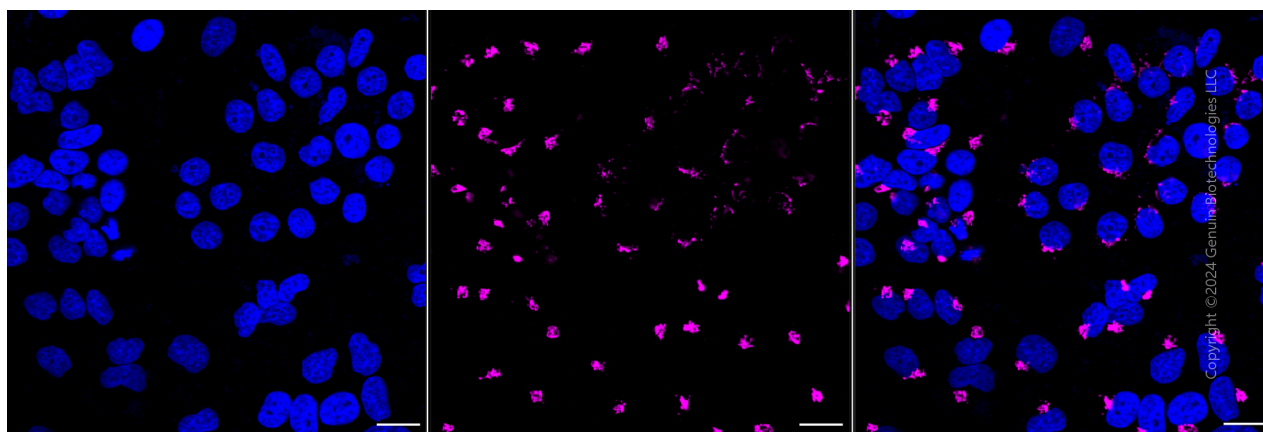
ORDERS

SALES@GENUINBIOTECH.COM
FAX: +1-540-855-7041

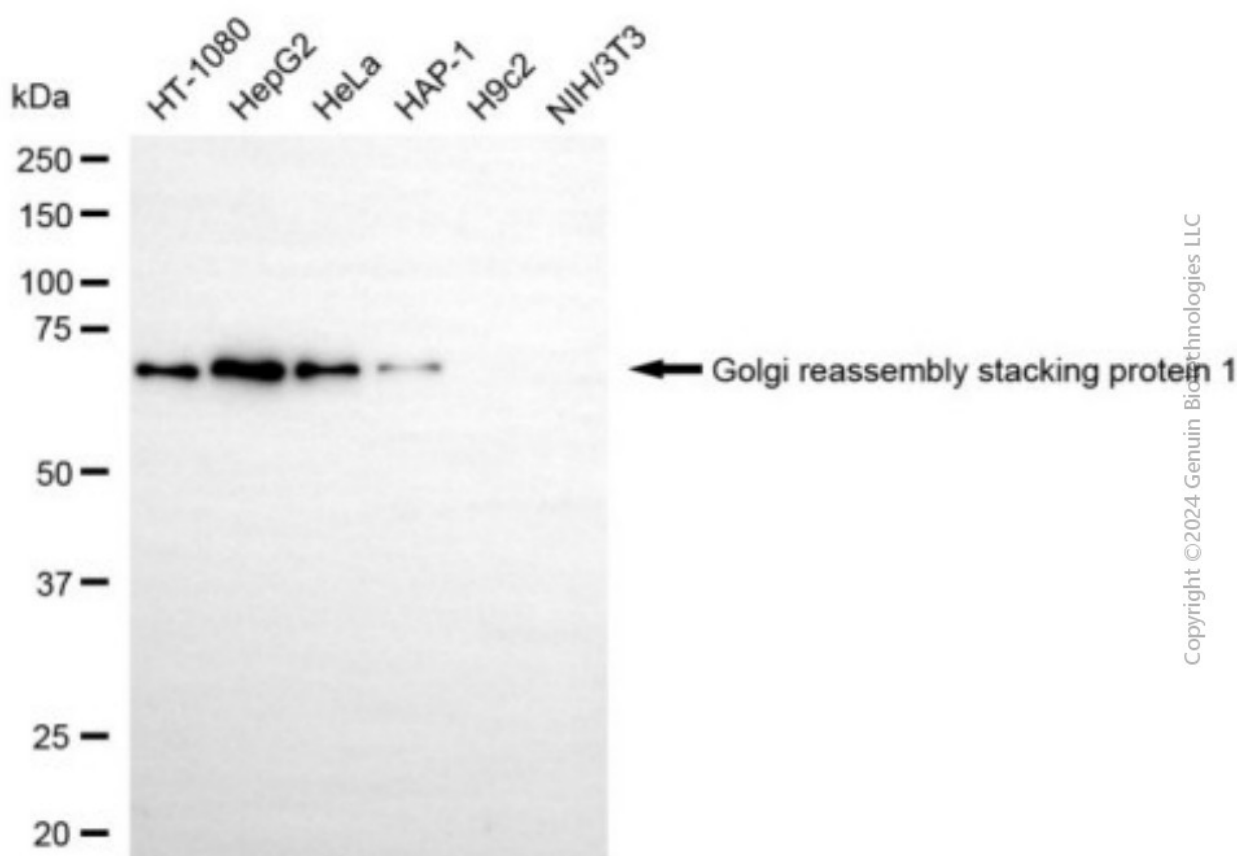
WWW.GENUINBIOTECH.COM

Anti-Golgi reassembly stacking protein 1 Recombinant Rabbit Monoclonal Antibody

PAGE 3



Immunocytochemical staining of HeLa cells with anti-golgi reassembly stacking protein 1 antibody (Cat#4481, 1:1,000). Nuclei were stained blue with DAPI; Golgi reassembly stacking protein 1 was stained magenta with Alexa Fluor® 647. Images were taken using Leica stellaris 5. Protein abundance based on laser Intensity and smart gain: High. Scale bar, 20 μ m.



Western blotting analysis using anti-golgi reassembly stacking protein 1 antibody (Cat#4481). Total cell lysates (30 μ g) from various cell lines were loaded and separated by SDS-PAGE. The blot was incubated with anti-golgi reassembly stacking protein 1 antibody (Cat#4481, 1:5,000) and HRP-conjugated goat anti-rabbit secondary antibody (Cat#201, 1:20,000) respectively. Image was

SUPPORT

SUPPORT@GENUINBIOTECH.COM
TEL: +1-540-855-7041

ORDERS

SALES@GENUINBIOTECH.COM
FAX: +1-540-855-7041

WWW.GENUINBIOTECH.COM

Anti-Golgi reassembly stacking protein 1 Recombinant Rabbit Monoclonal Antibody

PAGE 4

developed using NaQ™ ECL Substrate Kit (Cat#716).

SUPPORT

SUPPORT@GENUINBIOTECH.COM
TEL: +1-540-855-7041

ORDERS

SALES@GENUINBIOTECH.COM
FAX: +1-540-855-7041

WWW.GENUINBIOTECH.COM