

Anti-DLAT Recombinant Rabbit Monoclonal Antibody



Catalog #: 4482

Aliases

DLAT; Dihydrolipoamide S-Acetyltransferase; PDC-E2; DLTA; E2; Dihydrolipoyllysine-Residue Acetyltransferase Component Of Pyruvate; Dehydrogenase Complex, Mitochondrial; Dihydrolipoamide Acetyltransferase Component Of Pyruvate Dehydrogenase Complex; 70 KDa Mitochondrial Autoantigen Of Primary Biliary Cirrhosis; E2 Component Of Pyruvate Dehydrogenase Complex; Pyruvate Dehydrogenase Complex Component E2; M2 Antigen Complex 70 KDa Subunit; EC 2.3.1.12; PDCE2; PBC; Dihydrolipoyllysine-Residue Acetyltransferase; EC 2.3.1

Background

Gene Name: DLAT

NCBI Gene Entry: [1737](#)

UniProt Entry: [P10515](#)

Application Information

Molecular Weight: Predicted, 71 kDa; observed, 71 kDa

Clonality: Rabbit monoclonal antibody

Clone ID: 24GB11440

Species Reactivity: Human, mouse, rat

Applications Tested: Western blotting (WB), flow cytometry (FCM), immunocytochemistry (IC)

Immunogen

A synthesized peptide derived from human DLAT

Isotype

Rabbit IgG

Storage Buffer

Supplied in PBS (pH 7.4) containing 50% glycerol, and 0.02% sodium azide.

Storage

Store at -20 °C for one year.

Recommended Dilutions

Western Blotting (WB): 1:1,000-1:5,000

Flow Cytometry (FCM): 1:2,000

SUPPORT

SUPPORT@GENUINBIOTECH.COM
TEL: +1-540-855-7041

ORDERS

SALES@GENUINBIOTECH.COM
FAX: +1-540-855-7041

WWW.GENUINBIOTECH.COM

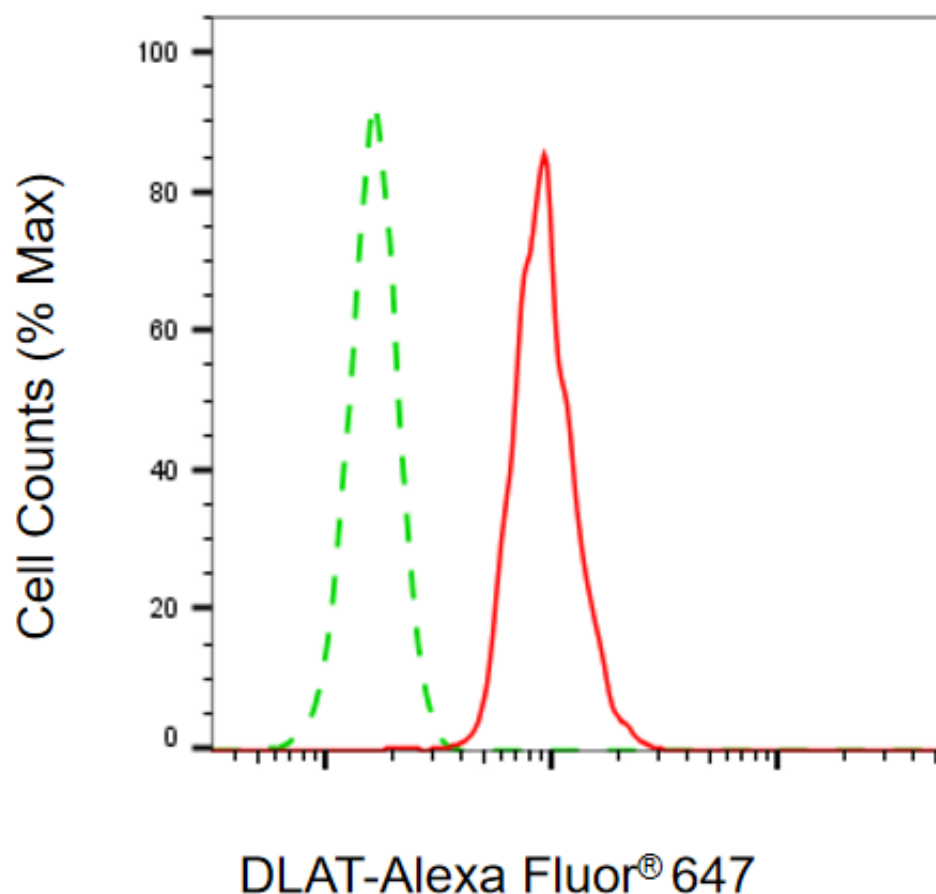
Anti-DLAT Recombinant Rabbit Monoclonal Antibody

PAGE 2

Immunocytochemistry (IC): 1:100-1:1,000

Note: This product is for research use only.

Validation Data



Copyright ©2025 Genuin Biotechnologies LLC

Flow cytometric analysis of DLAT expression in HepG2 cells using anti-DLAT antibody (Cat#4482, 1:2,000). Green, isotype control; red, DLAT.

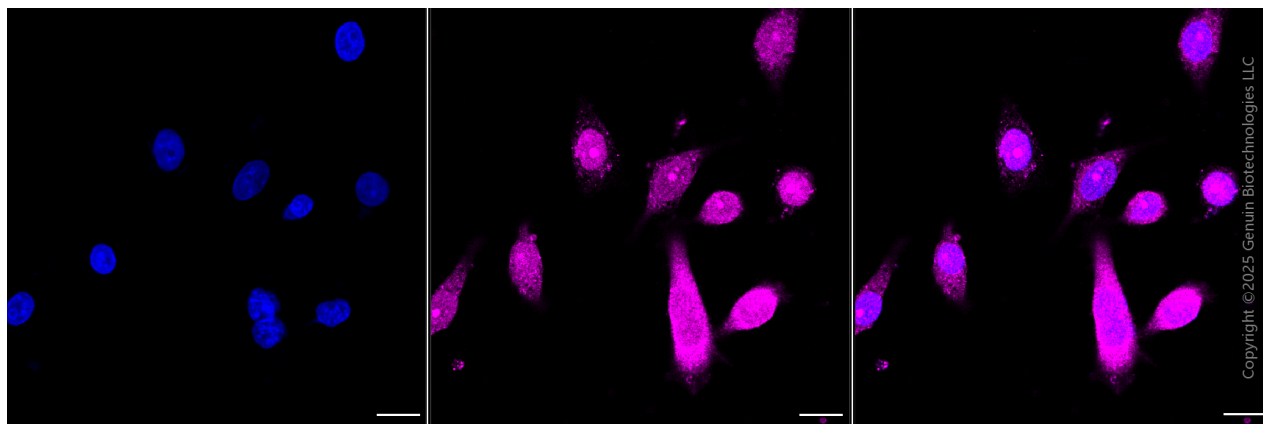
SUPPORT

SUPPORT@GENUINBIOTECH.COM
TEL: +1-540-855-7041

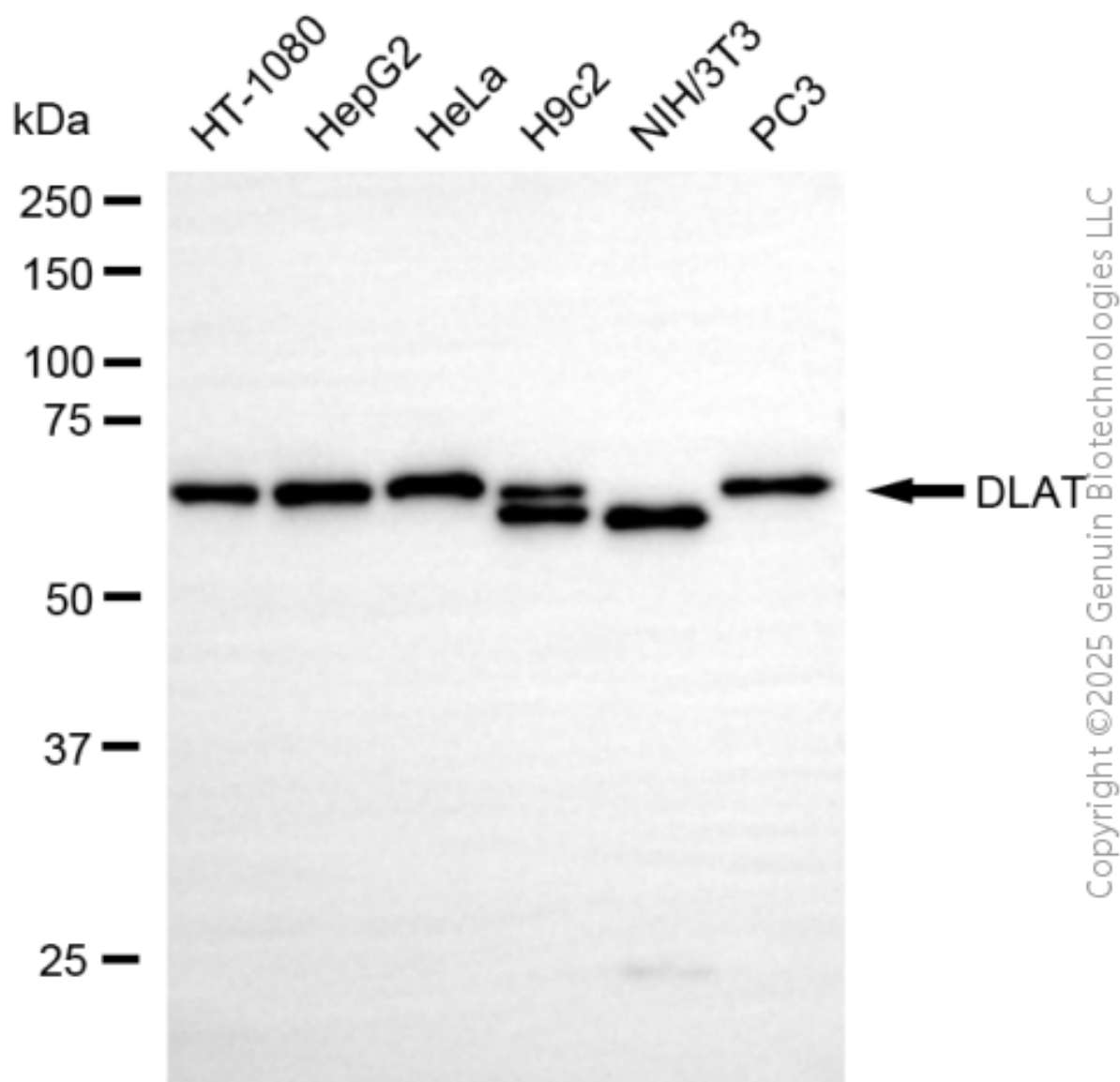
ORDERS

SALES@GENUINBIOTECH.COM
FAX: +1-540-855-7041

WWW.GENUINBIOTECH.COM



Immunocytochemical staining of HepG2 cells with anti-DLAT Antibody antibody (Cat#4482, 1:1,000) . Nuclei were stained blue with DAPI; DLAT Antibody was stained magenta with Alexa Fluor® 647. Images were taken using Leica stellaris 5. Protein abundance based on laser Intensity and smart gain: High. Scale bar, 20 μ m.



Western blotting analysis using anti-DLAT antibody (Cat#4482). Total cell lysates (30 μ g) from various cell lines were loaded and separated by SDS-PAGE. The blot was incubated with anti-DLAT antibody (Cat#4482, 1:5,000) and HRP-conjugated goat anti-rabbit secondary antibody (Cat#201, 1:20,000) respectively. Image was developed using NaQ™ ECL Substrate Kit (Cat#716).