

Anti-NAP1L1 Recombinant Rabbit Monoclonal Antibody



Catalog #: 4484

Aliases

Nucleosome Assembly Protein 1 Like 1; NRP; Nucleosome Assembly Protein 1-Like 1; NAP1L; NAP1; NAP-1-Related Protein; MGC23410; MGC8688; HSP22-Like Protein Interacting Protein; HNRP

Background

Gene Name: NAP1L1

NCBI Gene Entry: [4673](#)

UniProt Entry: [P55209](#)

Application Information

Molecular Weight: Predicted, 45 kDa; observed, 48-52 kDa

Clonality: Rabbit monoclonal antibody

Clone ID: 24GB11450

Species Reactivity: Human, mouse, rat

Applications Tested: Western blotting (WB), flow cytometry (FCM), immunocytochemistry (IC)

Immunogen

A synthesized peptide derived from human NAP1L1

Isotype

Rabbit IgG

Storage Buffer

Supplied in PBS (pH 7.4) containing 50% glycerol, and 0.02% sodium azide.

Storage

Store at -20 °C for one year.

Recommended Dilutions

Western Blotting (WB): 1:1,000-1:5,000

Flow Cytometry (FCM): 1:2,000

Immunocytochemistry (IC): 1:100-1:1,000

Note: This product is for research use only.

SUPPORT

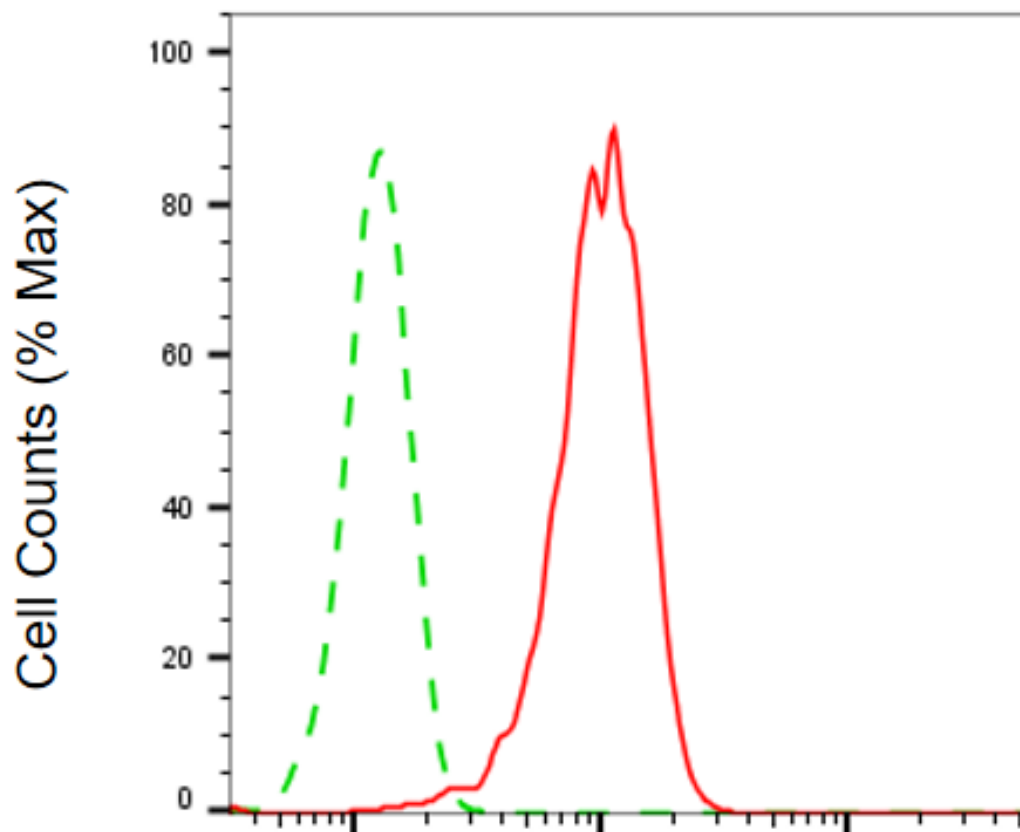
SUPPORT@GENUINBIOTECH.COM
TEL: +1-540-855-7041

ORDERS

SALES@GENUINBIOTECH.COM
FAX: +1-540-855-7041

WWW.GENUINBIOTECH.COM

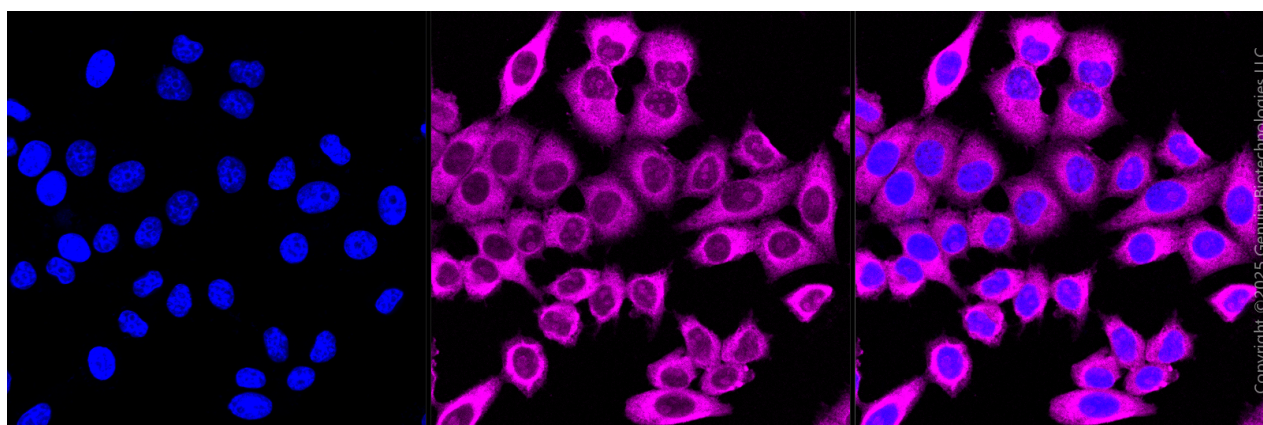
Validation Data



Copyright ©2025 Genuin Biotechnologies LLC

NAP1L1-Alexa Fluor® 647

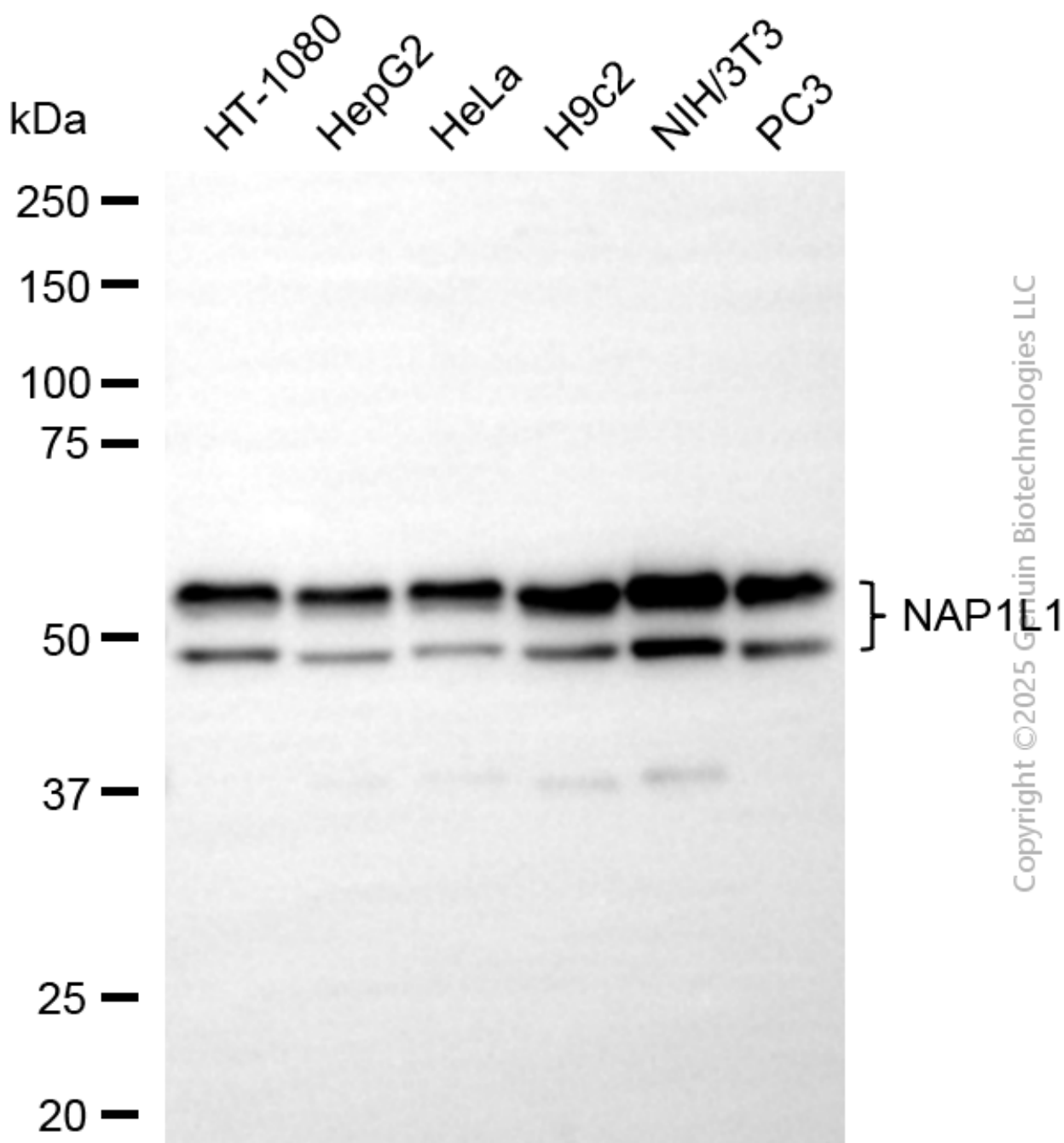
Flow cytometric analysis of NAP1L1 expression in HepG2 cells using anti-NAP1L1 antibody (Cat#4484, 1:2,000). Green, isotype control; red, NAP1L1.



Anti-NAP1L1 Recombinant Rabbit Monoclonal Antibody

PAGE 3

Immunocytochemical staining of HepG2 cells with anti-NAP1L1 antibody (Cat#4484, 1:1,000). Nuclei were stained blue with DAPI; NAP1L1 was stained magenta with Alexa Fluor® 647. Images were taken using Leica stellaris 5. Protein abundance based on laser Intensity and smart gain: High. Scale bar, 20 μ m.



Western blotting analysis using anti-NAP1L1 antibody (Cat#4484). Total cell lysates (30 μ g) from various cell lines were loaded and separated by SDS-PAGE. The blot was incubated with anti-NAP1L1 antibody (Cat#4484, 1:5,000) and HRP-conjugated goat anti-rabbit secondary antibody (Cat#201, 1:20,000) respectively. Image was developed using NaQ™ ECL Substrate Kit

SUPPORT

SUPPORT@GENUINBIOTECH.COM
TEL: +1-540-855-7041

ORDERS

SALES@GENUINBIOTECH.COM
FAX: +1-540-855-7041

WWW.GENUINBIOTECH.COM

Anti-NAP1L1 Recombinant Rabbit Monoclonal Antibody

PAGE 4

(Cat#716).

SUPPORT

SUPPORT@GENUINBIOTECH.COM
TEL: +1-540-855-7041

ORDERS

SALES@GENUINBIOTECH.COM
FAX: +1-540-855-7041

WWW.GENUINBIOTECH.COM