

Anti-CBX2 Recombinant Rabbit Monoclonal Antibody



Catalog #: 4485

Aliases

CBX2; Chromobox 2; M33; Cell Division Cycle Associated 6; Chromobox Protein Homolog 2; MGC10561; CDCA6; Chromobox Homolog 2 (Pc Class Homolog, Drosophila); Chromobox Homolog 2 (Drosophila Pc Class); Pc Class Homolog (Drosophila); Chromobox Homolog 2; Pc Class Homolog; Modifier 3; SRXY5

Background

Gene Name: CBX2

NCBI Gene Entry: [84733](#)

UniProt Entry: [Q14781](#)

Application Information

Molecular Weight: Predicted, 56 kDa; observed, 56 kDa

Clonality: Rabbit monoclonal antibody

Clone ID: 24GB11455

Species Reactivity: Human, mouse, rat

Applications Tested: Western blotting (WB), flow cytometry (FCM), immunocytochemistry (IC)

Immunogen

A synthesized peptide derived from human CBX2

Isotype

Rabbit IgG

Storage Buffer

Supplied in PBS (pH 7.4) containing 50% glycerol, and 0.02% sodium azide.

Storage

Store at -20 °C for one year.

Recommended Dilutions

Western Blotting (WB): 1:1,000-1:5,000

Flow Cytometry (FCM): 1:2,000

Immunocytochemistry (IC): 1:100-1:1,000

SUPPORT

SUPPORT@GENUINBIOTECH.COM
TEL: +1-540-855-7041

ORDERS

SALES@GENUINBIOTECH.COM
FAX: +1-540-855-7041

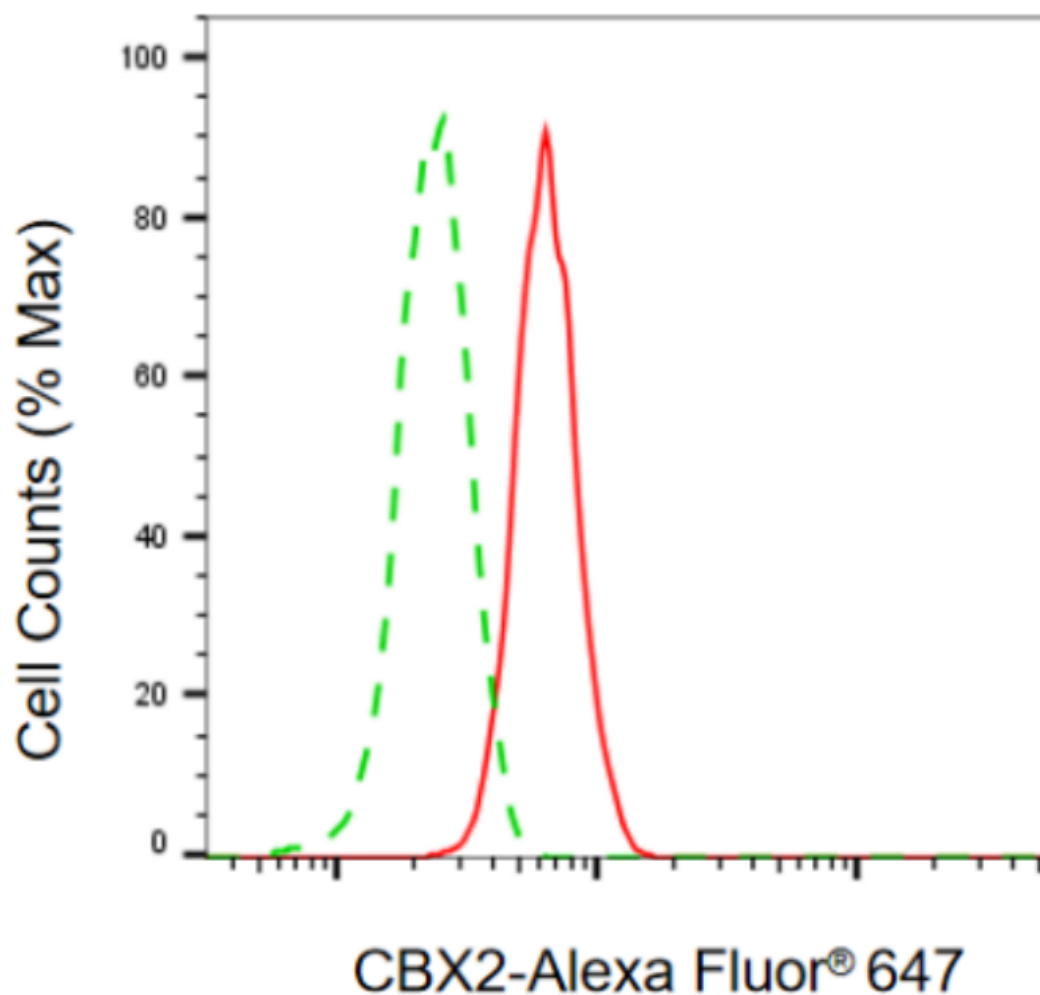
WWW.GENUINBIOTECH.COM

Anti-CBX2 Recombinant Rabbit Monoclonal Antibody

PAGE 2

Note: This product is for research use only.

Validation Data



Copyright ©2024 Genuin Biotechnologies LLC

Flow cytometric analysis of CBX2 expression in C2C12 cells using anti-CBX2 antibody (Cat#4485, 1:2,000). Green, isotype control; red, CBX2.

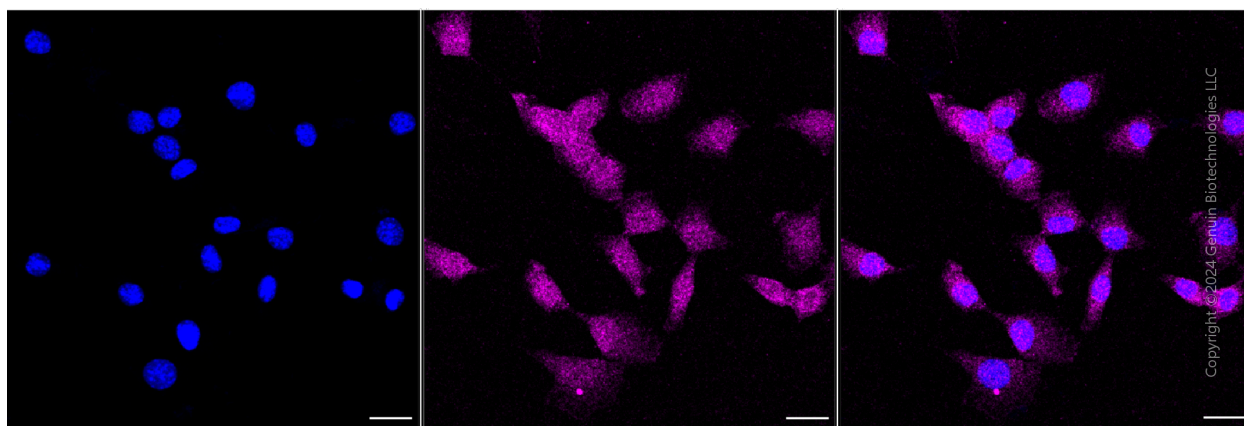
SUPPORT

SUPPORT@GENUINBIOTECH.COM
TEL: +1-540-855-7041

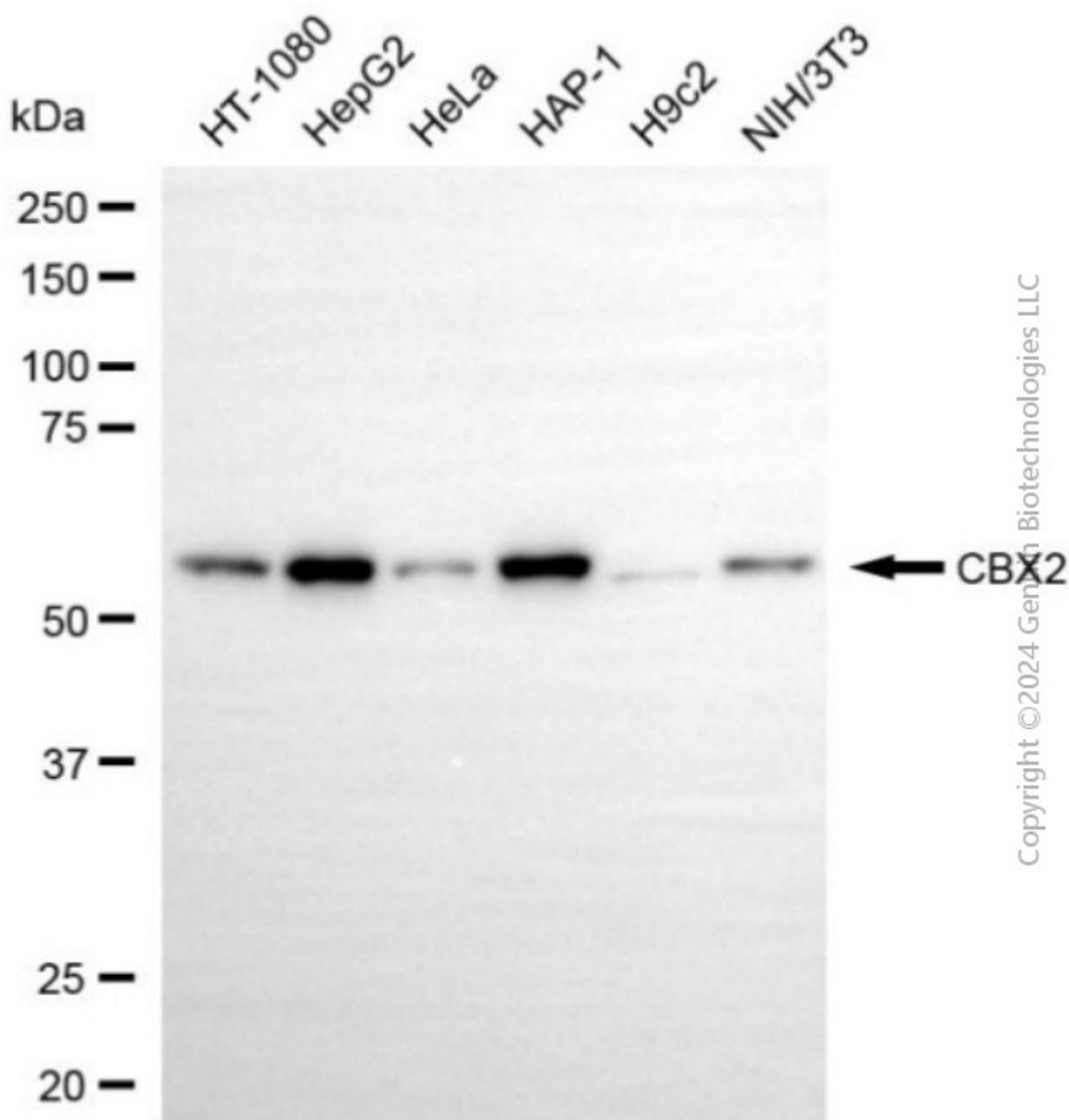
ORDERS

SALES@GENUINBIOTECH.COM
FAX: +1-540-855-7041

WWW.GENUINBIOTECH.COM



Immunocytochemical staining of C2C12 cells with anti-CBX2 antibody (Cat#4485, 1:1,000). Nuclei were stained blue with DAPI; CBX2 was stained magenta with Alexa Fluor® 647. Images were taken using Leica stellaris 5. Protein abundance based on laser Intensity and smart gain: Medium. Scale bar, 20 μ m.



Western blotting analysis using anti-CBX2 antibody (Cat#4485). Total cell lysates (30 µg) from various cell lines were loaded and separated by SDS-PAGE. The blot was incubated with anti-CBX2 antibody (Cat#4485, 1:5,000) and HRP-conjugated goat anti-rabbit secondary antibody (Cat#201, 1:20,000) respectively. Image was developed using NaQ™ ECL Substrate Kit (Cat#716).