

Anti-SAMHD1 Recombinant Rabbit Monoclonal Antibody



Catalog #: 4486

Aliases

SAM And HD Domain Containing Deoxynucleoside Triphosphate Triphosphohydrolase 1; MOP-5; Monocyte Protein 5; SBBI88; HDDC1; Deoxynucleoside Triphosphate Triphosphohydrolase SAMHD1; SAM Domain And HD Domain-Containing Protein 1; Dendritic Cell-Derived IFNG-Induced Protein; SAM Domain And HD Domain 1; HSAMHD1; DNTPase; Mg11; AGS5; DCIP; Aicardi-Goutieres Syndrome 5; HD Domain Containing 1; EC 3.1.5.-; CHBL2; MOP5

Background

Gene Name: SAMHD1

NCBI Gene Entry: [25939](#)

UniProt Entry: [Q9Y3Z3](#)

Application Information

Molecular Weight: Predicted, 72 kDa; observed, 72 kDa

Clonality: Rabbit monoclonal antibody

Clone ID: 24GB11460

Species Reactivity: Human, rat

Applications Tested: Western blotting (WB), flow cytometry (FCM), immunocytochemistry (IC)

Immunogen

A synthesized peptide derived from human SAMHD1

Isotype

Rabbit IgG

Storage Buffer

Supplied in PBS (pH 7.4) containing 50% glycerol, and 0.02% sodium azide.

Storage

Store at -20 °C for one year.

Recommended Dilutions

Western Blotting (WB): 1:1,000-1:5,000

Flow Cytometry (FCM): 1:2,000

Immunocytochemistry (IC): 1:100-1:1,000

SUPPORT

SUPPORT@GENUINBIOTECH.COM
TEL: +1-540-855-7041

ORDERS

SALES@GENUINBIOTECH.COM
FAX: +1-540-855-7041

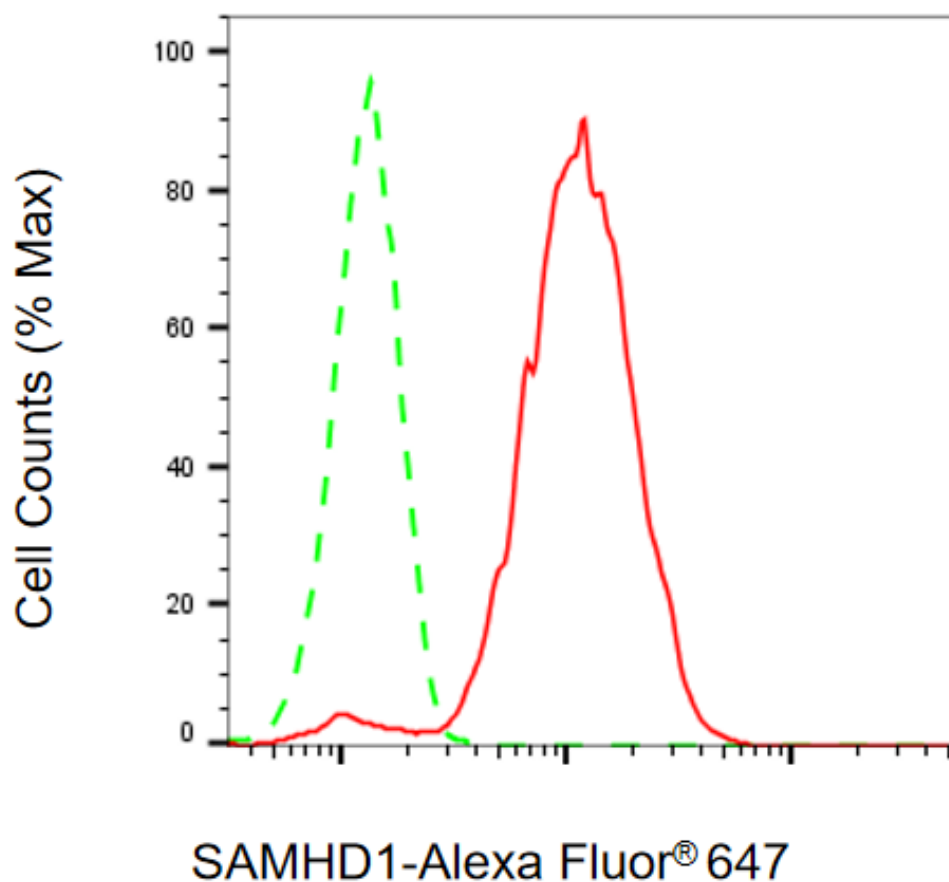
WWW.GENUINBIOTECH.COM

Anti-SAMHD1 Recombinant Rabbit Monoclonal Antibody

PAGE 2

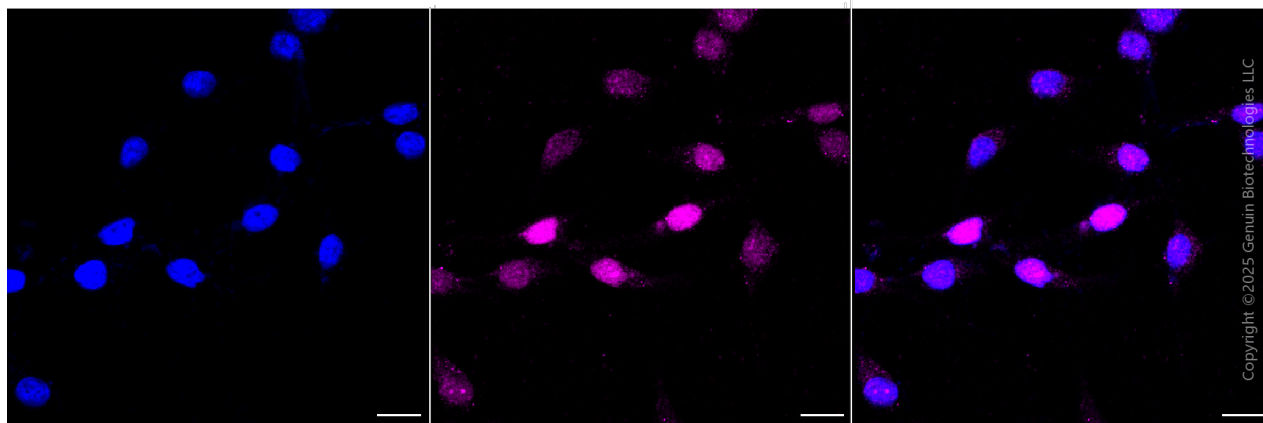
Note: This product is for research use only.

Validation Data



Copyright ©2025 Genuin Biotechnologies LLC

Flow cytometric analysis of SAMHD1 expression in HeLa cells using anti-SAMHD1 antibody (Cat#4486, 1:2,000). Green, isotype control; red, SAMHD1.



Copyright ©2025 Genuin Biotechnologies LLC

SUPPORT

SUPPORT@GENUINBIOTECH.COM
TEL: +1-540-855-7041

ORDERS

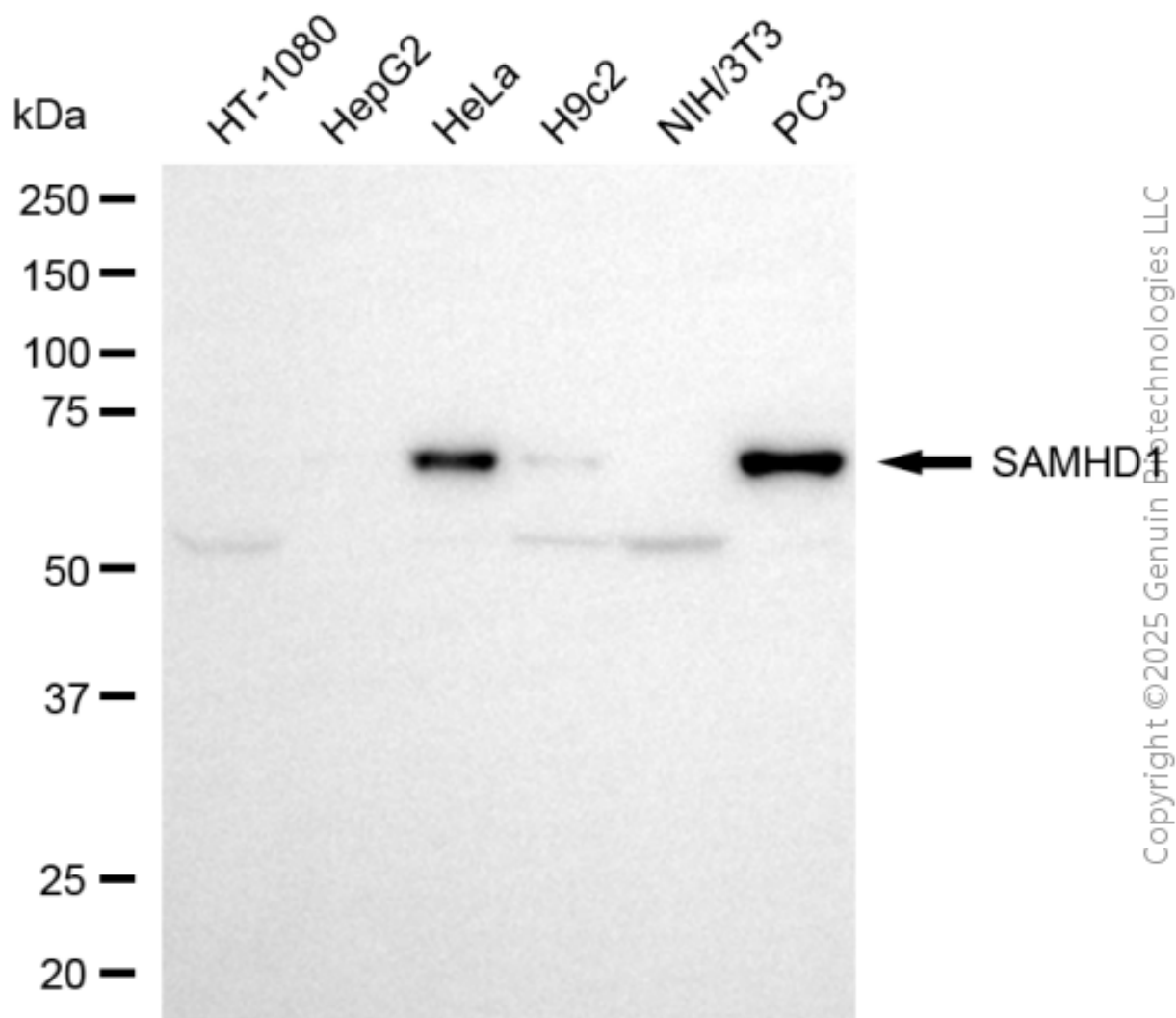
SALES@GENUINBIOTECH.COM
FAX: +1-540-855-7041

WWW.GENUINBIOTECH.COM

Anti-SAMHD1 Recombinant Rabbit Monoclonal Antibody

PAGE 3

Immunocytochemical staining of Hela cells with anti-SAMHD1 antibody (Cat#4486, 1:1,000) . Nuclei were stained blue with DAPI; SAMHD1 was stained magenta with Alexa Fluor® 647. Images were taken using Leica stellaris 5. Protein abundance based on laser Intensity and smart gain: Medium. Scale bar, 20 μ m.



Western blotting analysis using anti-SAMHD1 antibody (Cat#4486). Total cell lysates (30 μ g) from various cell lines were loaded and separated by SDS-PAGE. The blot was incubated with anti-SAMHD1 antibody (Cat#4486, 1:5,000) and HRP-conjugated goat anti-rabbit secondary antibody (Cat#201, 1:20,000) respectively. Image was developed using NaQ™ ECL Substrate Kit (Cat#716).

SUPPORT

SUPPORT@GENUINBIOTECH.COM
TEL: +1-540-855-7041

ORDERS

SALES@GENUINBIOTECH.COM
FAX: +1-540-855-7041

WWW.GENUINBIOTECH.COM