

# Anti-RING1 Recombinant Rabbit Monoclonal Antibody



**Catalog #: 4487**

## Aliases

Ring Finger Protein 1; RNF1; RING-Type E3 Ubiquitin Transferase RING1; Really Interesting New Gene 1 Protein; E3 Ubiquitin-Protein Ligase RING1; Polycomb Complex Protein RING1; RING Finger Protein 1; EC 2.3.2.27; EC 6.3.2; RING1A

## Background

Gene Name: RING1

NCBI Gene Entry: [6015](#)

UniProt Entry: [Q06587](#)

## Application Information

Molecular Weight: Predicted, 42 kDa; observed, 50 kDa

Clonality: Rabbit monoclonal antibody

Clone ID: 24GB11465

Species Reactivity: Human, mouse, rat

Applications Tested: Western blotting (WB), flow cytometry (FCM), immunocytochemistry (IC)

## Immunogen

A synthesized peptide derived from human RING1

## Isotype

Rabbit IgG

## Storage Buffer

Supplied in PBS (pH 7.4) containing 50% glycerol, and 0.02% sodium azide.

## Storage

Store at -20 °C for one year.

## Recommended Dilutions

Western Blotting (WB): 1:1,000-1:5,000

Flow Cytometry (FCM): 1:2,000

Immunocytochemistry (IC): 1:100-1:1,000

**Note:** This product is for research use only.

---

### SUPPORT

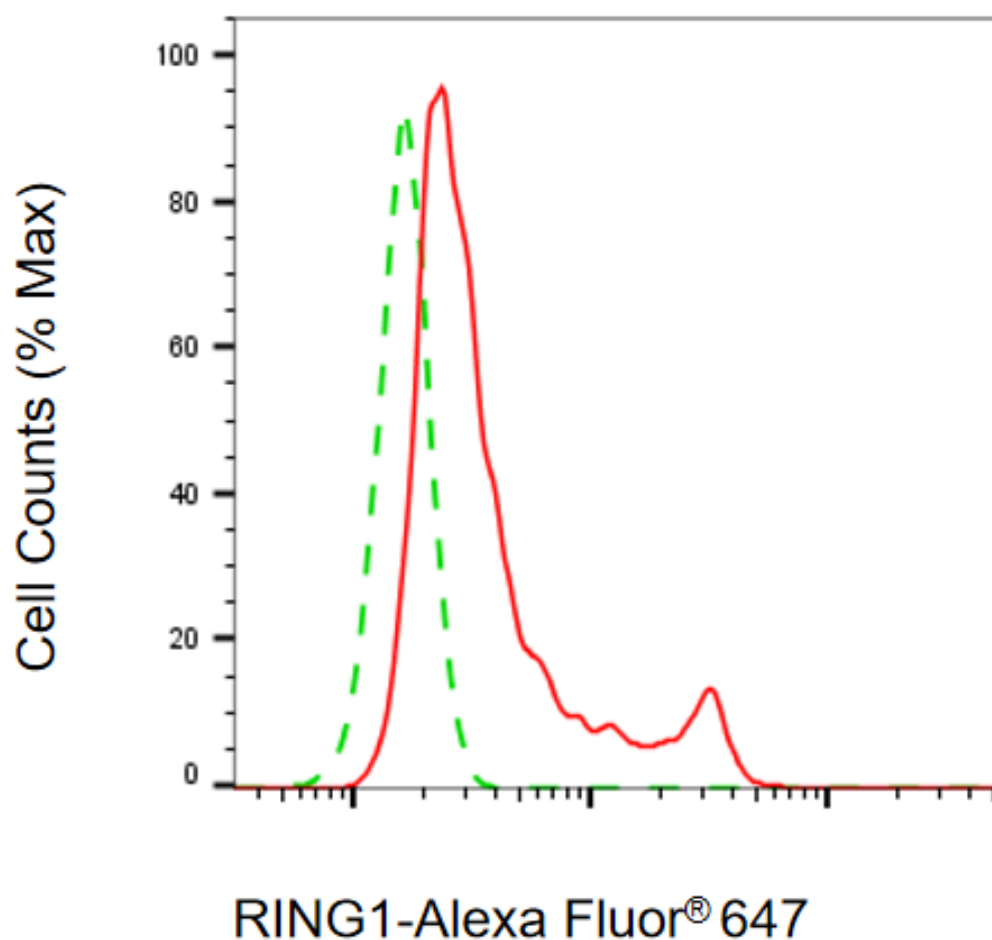
SUPPORT@GENUINBIOTECH.COM  
TEL: +1-540-855-7041

### ORDERS

SALES@GENUINBIOTECH.COM  
FAX: +1-540-855-7041

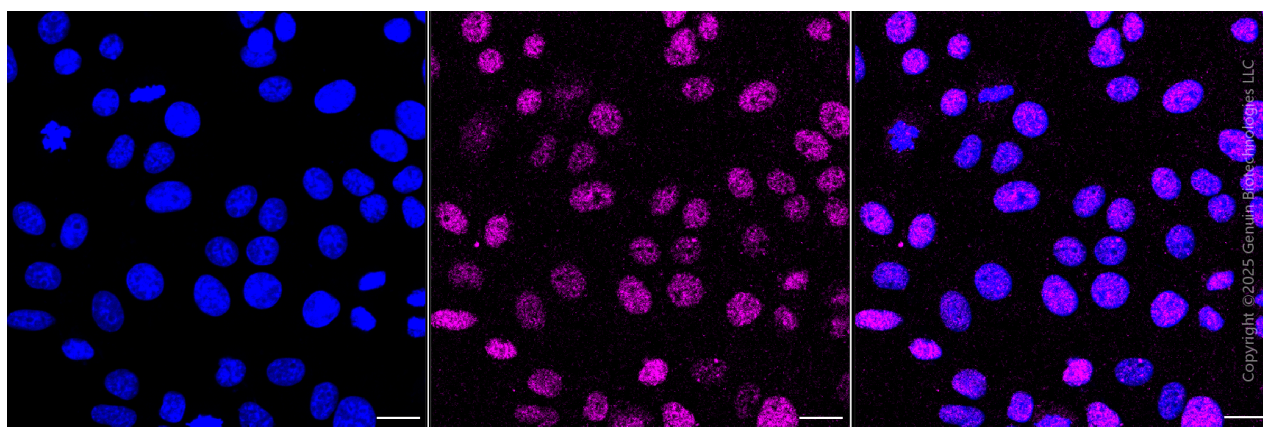
[WWW.GENUINBIOTECH.COM](http://WWW.GENUINBIOTECH.COM)

## Validation Data



Copyright ©2025 Genuin Biotechnologies LLC

Flow cytometric analysis of RING1 expression in HepG2 cells using anti-RING1 antibody (Cat#4487, 1:2,000). Green, isotype control; red, RING1.



Immunocytochemical staining of HepG2 cells with anti-RING1 antibody (Cat#4487, 1:1,000). Nuclei were stained blue with DAPI; RING1 was stained magenta with Alexa Fluor® 647. Images

### SUPPORT

SUPPORT@GENUINBIOTECH.COM  
TEL: +1-540-855-7041

### ORDERS

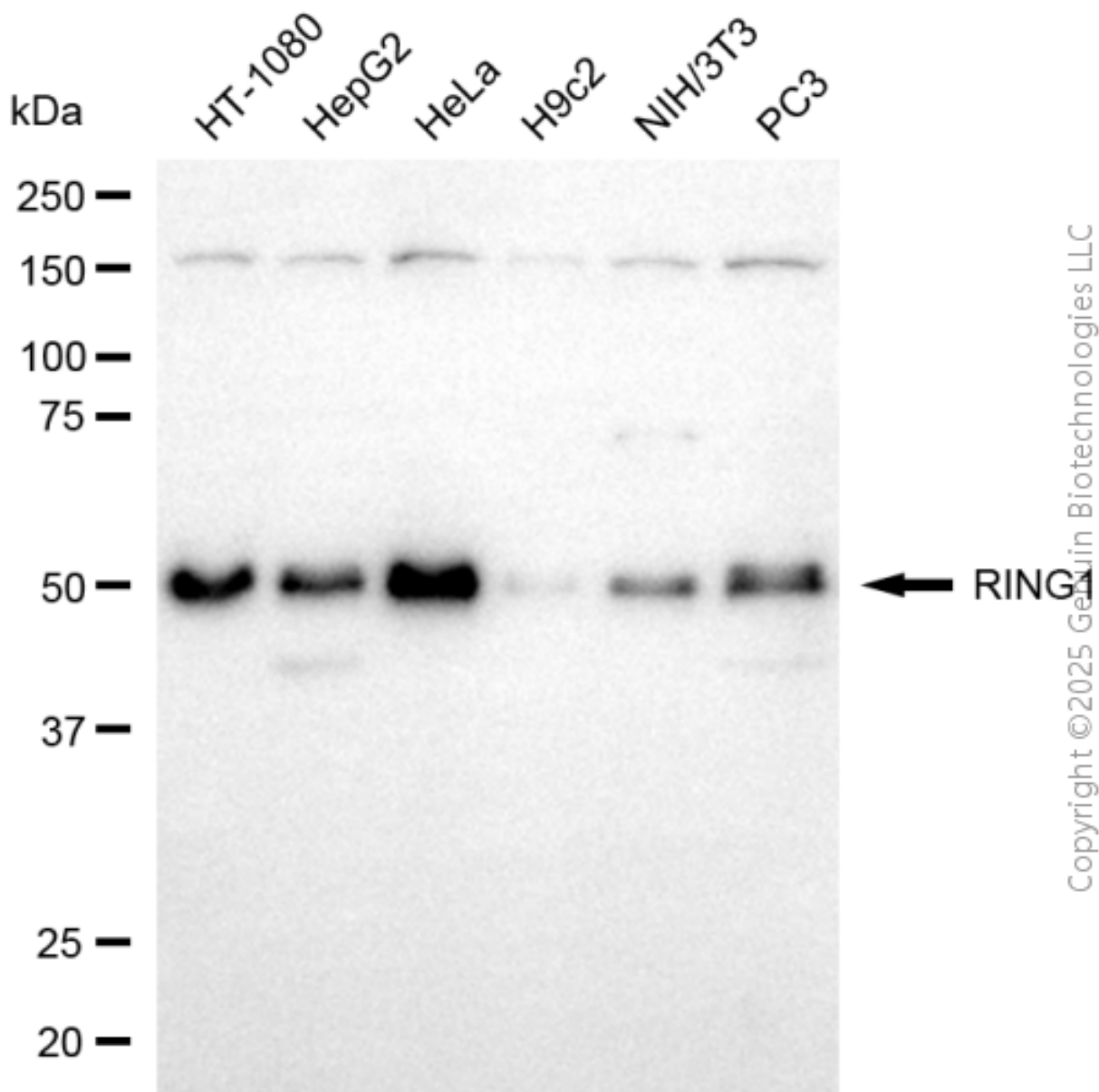
SALES@GENUINBIOTECH.COM  
FAX: +1-540-855-7041

[WWW.GENUINBIOTECH.COM](http://WWW.GENUINBIOTECH.COM)

## Anti-RING1 Recombinant Rabbit Monoclonal Antibody

PAGE 3

were taken using Leica stellaris 5. Protein abundance based on laser Intensity and smart gain: Medium. Scale bar, 20  $\mu$ m.



Western blotting analysis using anti-RING1 antibody (Cat#4487). Total cell lysates (30  $\mu$ g) from various cell lines were loaded and separated by SDS-PAGE. The blot was incubated with anti-RING1 antibody (Cat#4487, 1:5,000) and HRP-conjugated goat anti-rabbit secondary antibody (Cat#201, 1:20,000) respectively. Image was developed using FeQ™ ECL Substrate Kit (Cat#226).

### SUPPORT

SUPPORT@GENUINBIOTECH.COM  
TEL: +1-540-855-7041

### ORDERS

SALES@GENUINBIOTECH.COM  
FAX: +1-540-855-7041

WWW.GENUINBIOTECH.COM