

Anti-VPS26 Recombinant Rabbit Monoclonal Antibody



Catalog #: 4492

Aliases

VPS26A; VPS26 Retromer Complex Component A; Hbeta58; PEP8A; VPS26; Vacuolar Protein Sorting-Associated Protein 26A; Vesicle Protein Sorting 26A; Vacuolar Protein Sorting 26 Homolog A (S. Pombe); Vacuolar Protein Sorting 26 (Yeast Homolog); Vacuolar Protein Sorting 26 Homolog A; VPS26, Retromer Complex Component A; VPS26 Retromer Complex Component A; HVPS26; HB58

Background

Gene Name: VPS26A
NCBI Gene Entry: [9559](#)
UniProt Entry: [O75436](#)

Application Information

Molecular Weight: Predicted, 38 kDa; observed, 38 kDa
Clonality: Rabbit monoclonal antibody
Clone ID: 24GB11490
Species Reactivity: Human, mouse, rat
Applications Tested: Western blotting (WB), flow cytometry (FCM), immunocytochemistry (IC)

Immunogen

A synthesized peptide derived from human VPS26

Isotype

Rabbit IgG

Storage Buffer

Supplied in PBS (pH 7.4) containing 50% glycerol, and 0.02% sodium azide.

Storage

Store at -20 °C for one year.

Recommended Dilutions

Western Blotting (WB): 1:1,000-1:5,000
Flow Cytometry (FCM): 1:2,000
Immunocytochemistry (IC): 1:100-1:1,000

SUPPORT

SUPPORT@GENUINBIOTECH.COM
TEL: +1-540-855-7041

ORDERS

SALES@GENUINBIOTECH.COM
FAX: +1-540-855-7041

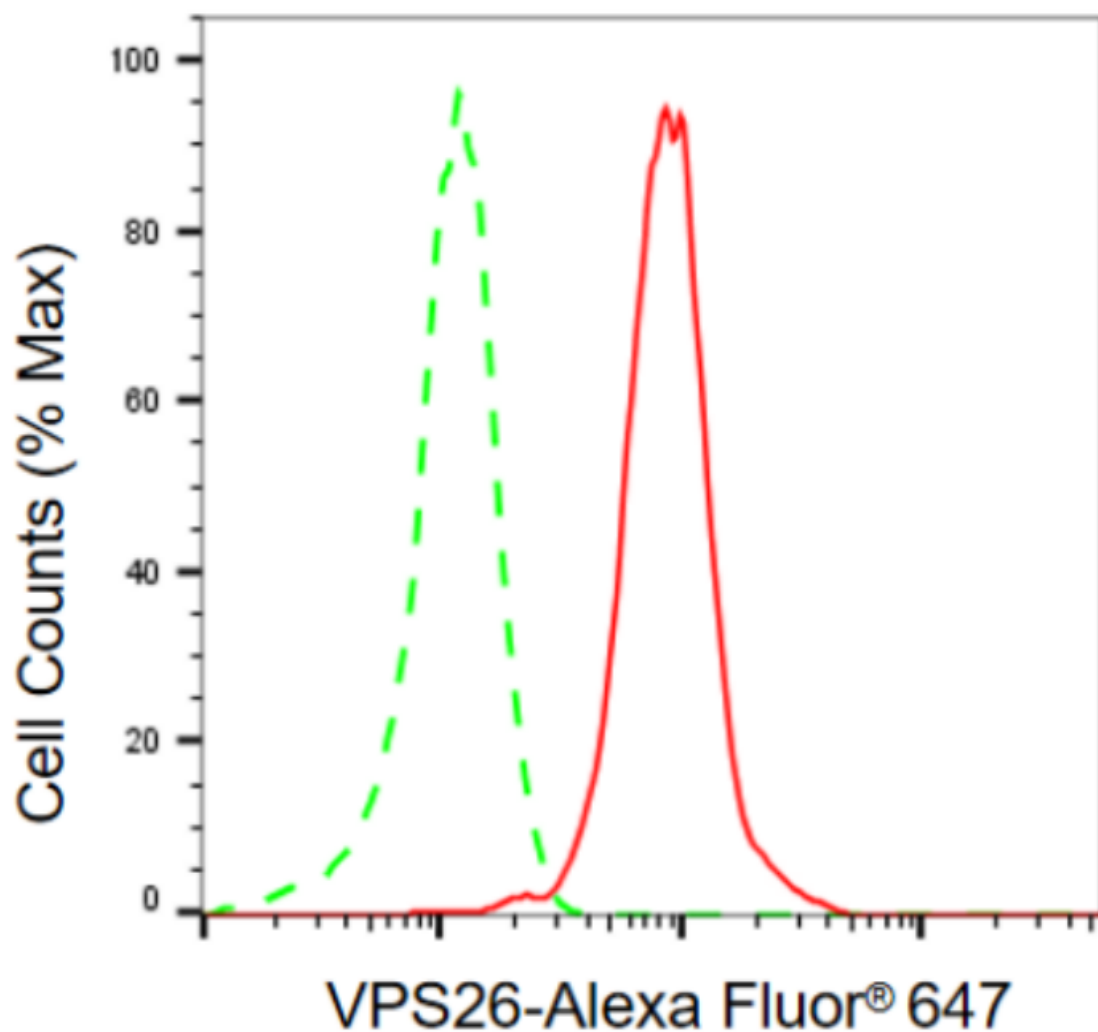
WWW.GENUINBIOTECH.COM

Anti-VPS26 Recombinant Rabbit Monoclonal Antibody

PAGE 2

Note: This product is for research use only.

Validation Data



Copyright ©2024 Genuin Biotechnologies LLC

Flow cytometric analysis of VPS26 expression in HepG2 cells using anti-VPS26 antibody (Cat#4492, 1:2,000). Green, isotype control; red, VPS26.

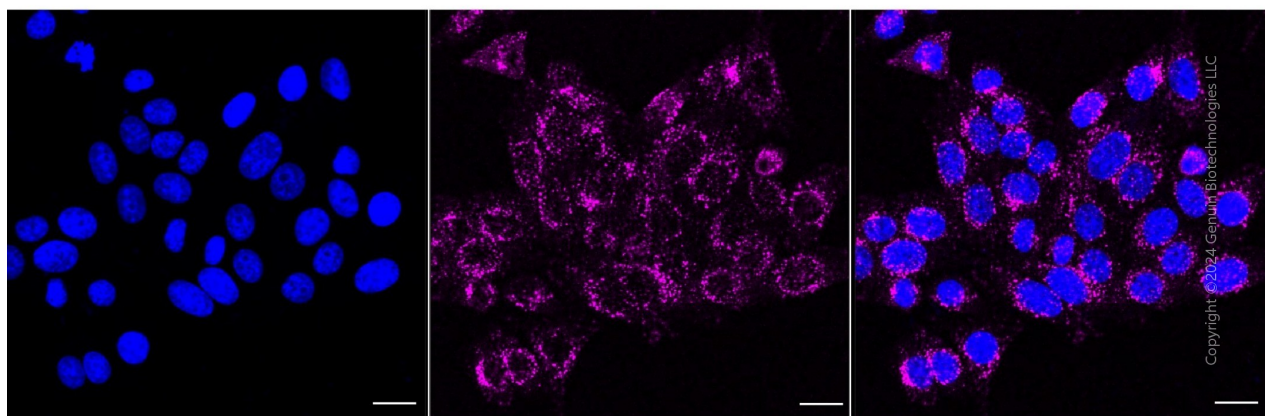
SUPPORT

SUPPORT@GENUINBIOTECH.COM
TEL: +1-540-855-7041

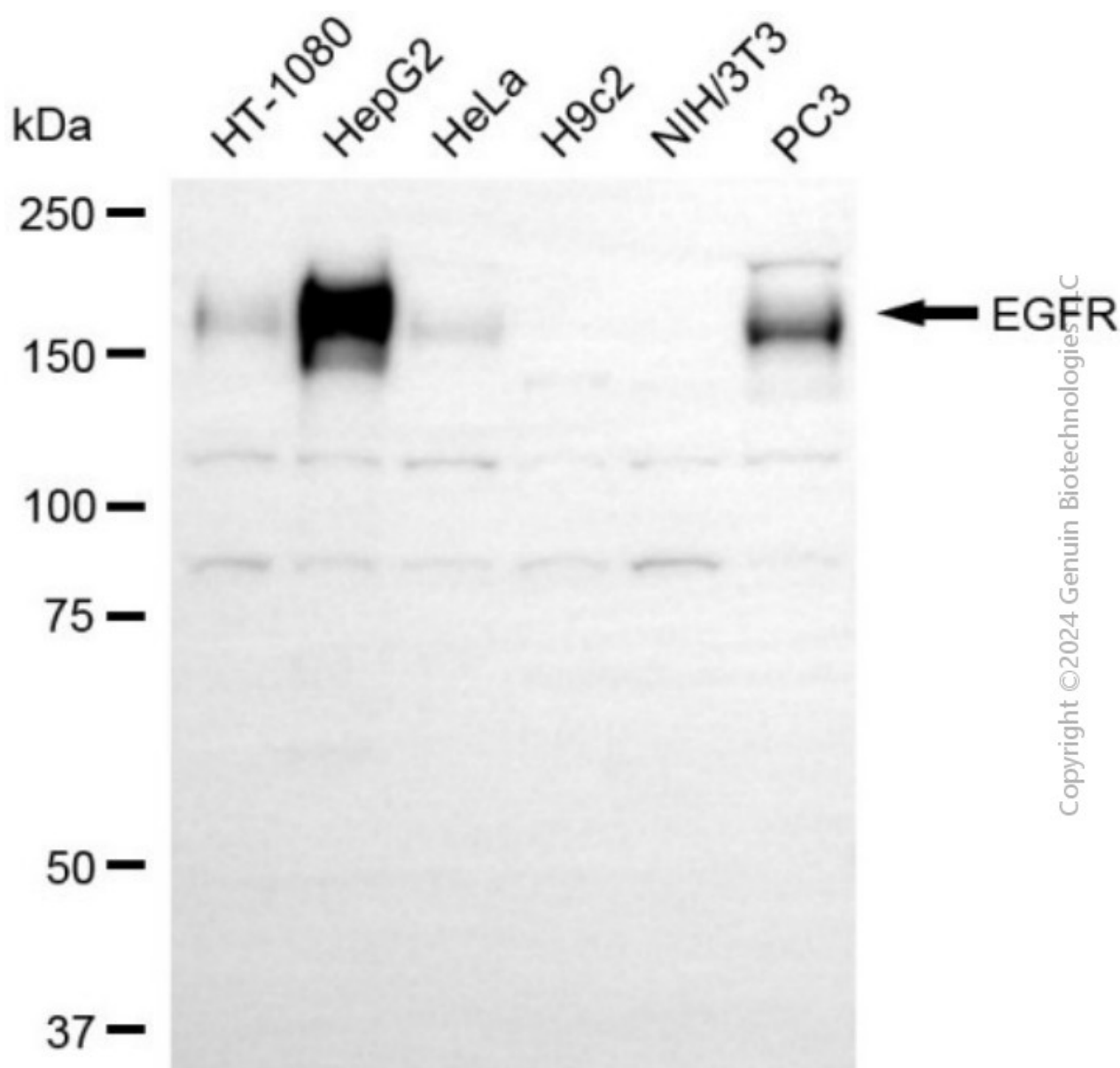
ORDERS

SALES@GENUINBIOTECH.COM
FAX: +1-540-855-7041

WWW.GENUINBIOTECH.COM



Immunocytochemical staining of HepG2 cells with anti-VPS26 antibody (Cat#4492, 1:1,000). Nuclei were stained blue with DAPI; VPS26 was stained magenta with Alexa Fluor® 647. Images were taken using Leica stellaris 5. Protein abundance based on laser Intensity and smart gain: Medium. Scale bar, 20 μ m.



Western blotting analysis using anti-VPS26 antibody (Cat#4492). Total cell lysates (30 μ g) from various cell lines were loaded and separated by SDS-PAGE. The blot was incubated with anti-VPS26 antibody (Cat#4492, 1:5,000) and HRP-conjugated goat anti-rabbit secondary antibody (Cat#201, 1:20,000) respectively. Image was developed using NaQ™ ECL Substrate Kit (Cat#716).