

# Anti-TARBP2 Recombinant Rabbit Monoclonal Antibody



**Catalog #: 4493**

## Aliases

TARBP2; TARBP2 Subunit Of RISC Loading Complex; Trbp; TARBP2, RISC Loading Complex RNA Binding Subunit; RISC-Loading Complex Subunit TARBP2; TAR (HIV-1) RNA Binding Protein 2; Trans-Activation Responsive RNA-Binding Protein; Trans-Activation-Responsive RNA-Binding Protein; TAR (HIV) RNA-Binding Protein TRBP1; TAR (HIV) RNA-Binding Protein 2; TAR RNA Binding Protein 2; TAR RNA-Binding Protein 2; TRBP1; TRBP2; LOQS; TRBP

## Background

Gene Name: TARBP2

NCBI Gene Entry: [6895](#)

UniProt Entry: [Q15633](#)

## Application Information

Molecular Weight: Predicted, 39 kDa; observed, 39 kDa

Clonality: Rabbit monoclonal antibody

Clone ID: 24GB11495

Species Reactivity: Human, mouse, rat

Applications Tested: Western blotting (WB), flow cytometry (FCM), immunocytochemistry (IC)

## Immunogen

A synthesized peptide derived from human TRBP

## Isotype

Rabbit IgG

## Storage Buffer

Supplied in PBS (pH 7.4) containing 50% glycerol, and 0.02% sodium azide.

## Storage

Store at -20 °C for one year.

## Recommended Dilutions

Western Blotting (WB): 1:1,000-1:5,000

Flow Cytometry (FCM): 1:2,000

Immunocytochemistry (IC): 1:100-1:1,000

---

### SUPPORT

SUPPORT@GENUINBIOTECH.COM  
TEL: +1-540-855-7041

### ORDERS

SALES@GENUINBIOTECH.COM  
FAX: +1-540-855-7041

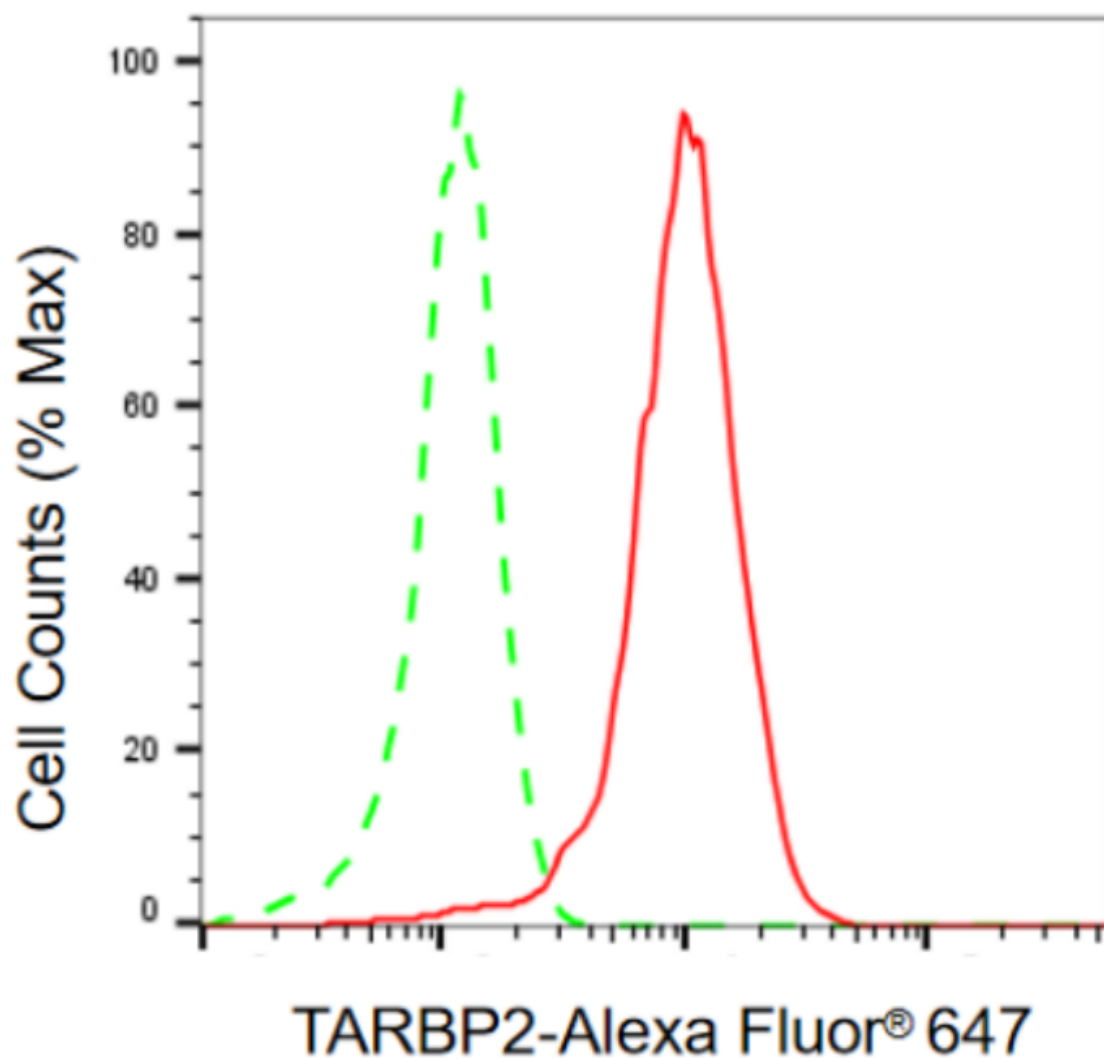
[WWW.GENUINBIOTECH.COM](http://WWW.GENUINBIOTECH.COM)

# Anti-TARBP2 Recombinant Rabbit Monoclonal Antibody

PAGE 2

**Note:** This product is for research use only.

## Validation Data



Copyright ©2024 Genuin Biotechnologies LLC

Flow cytometric analysis of TARBP2 expression in HepG2 cells using anti-TARBP2 antibody (Cat#4493, 1:2,000). Green, isotype control; red, TARBP2.

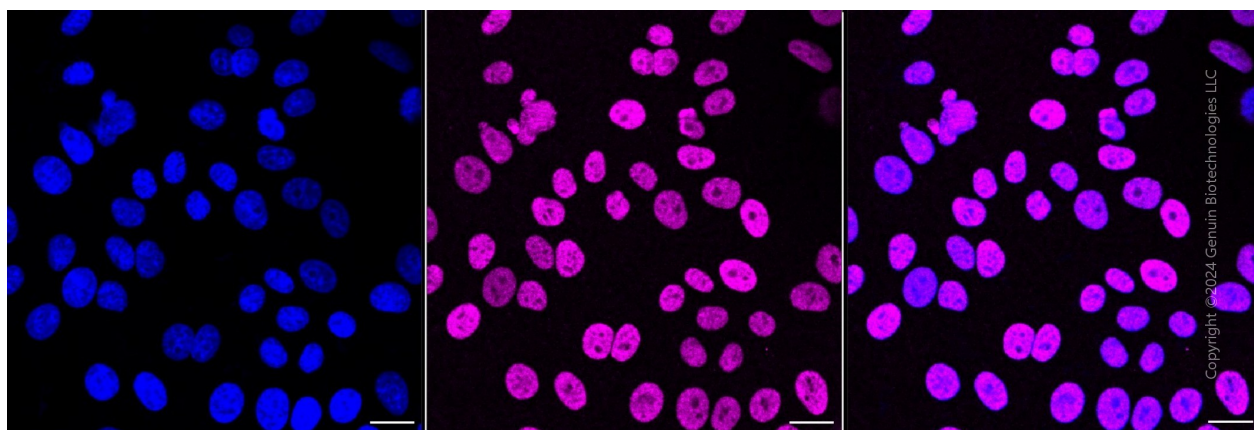
### SUPPORT

SUPPORT@GENUINBIOTECH.COM  
TEL: +1-540-855-7041

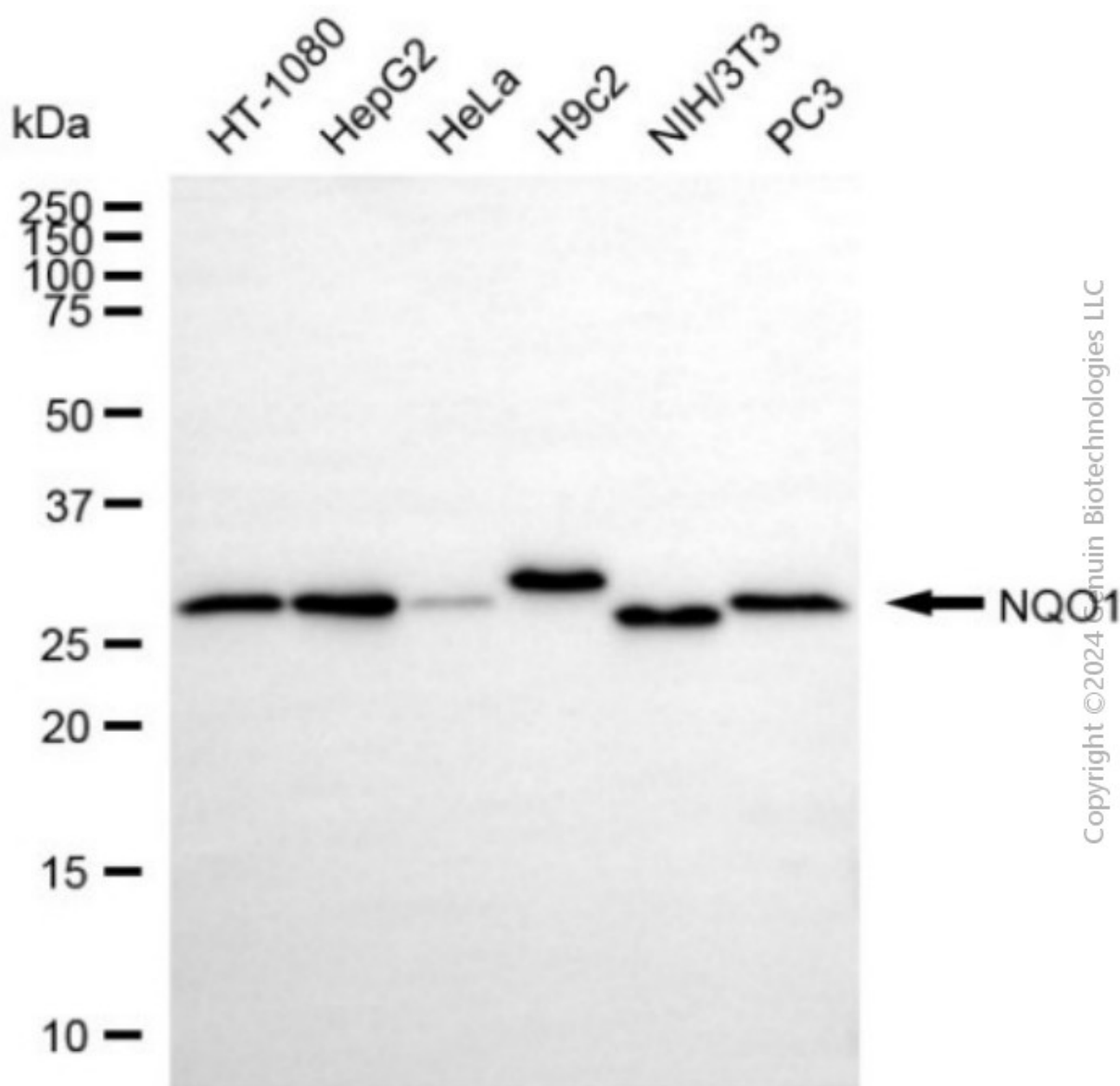
### ORDERS

SALES@GENUINBIOTECH.COM  
FAX: +1-540-855-7041

[WWW.GENUINBIOTECH.COM](http://WWW.GENUINBIOTECH.COM)



Immunocytochemical staining of HepG2 cells with anti-TARBP2 antibody (Cat#4493, 1:1,000). Nuclei were stained blue with DAPI; TARBP2 was stained magenta with Alexa Fluor® 647. Images were taken using Leica stellaris 5. Protein abundance based on laser Intensity and smart gain: Medium. Scale bar, 20  $\mu$ m.



Copyright © 2024 Genuin Biotechnologies LLC

Western blotting analysis using anti-TARBP2 antibody (Cat#4493). Total cell lysates (30 µg) from various cell lines were loaded and separated by SDS-PAGE. The blot was incubated with anti-TARBP2 antibody (Cat#4493, 1:5,000) and HRP-conjugated goat anti-rabbit secondary antibody (Cat#201, 1:20,000) respectively. Image was developed using NaQ™ ECL Substrate Kit (Cat#716).