

Anti-RABEPK Recombinant Rabbit Monoclonal Antibody



Catalog #: 4496

Aliases

Rab9 Effector Protein With Kelch Motifs; RAB9P40; BA65N13.1; 40 KDa Rab9 Effector Protein; P40; Rab9 Effector P40

Background

Gene Name: RABEPK

NCBI Gene Entry: [10244](#)

UniProt Entry: [Q7Z6M1](#)

Application Information

Molecular Weight: Predicted, 41 kDa; observed, 41 kDa

Clonality: Rabbit monoclonal antibody

Clone ID: 24GB11510

Species Reactivity: Human

Applications Tested: Western blotting (WB), flow cytometry (FCM)

Immunogen

A synthesized peptide derived from human p40

Isotype

Rabbit IgG

Storage Buffer

Supplied in PBS (pH 7.4) containing 50% glycerol, and 0.02% sodium azide.

Storage

Store at -20 °C for one year.

Recommended Dilutions

Western Blotting (WB): 1:1,000-1:5,000

Flow Cytometry (FCM): 1:2,000

Note: This product is for research use only.

Validation Data

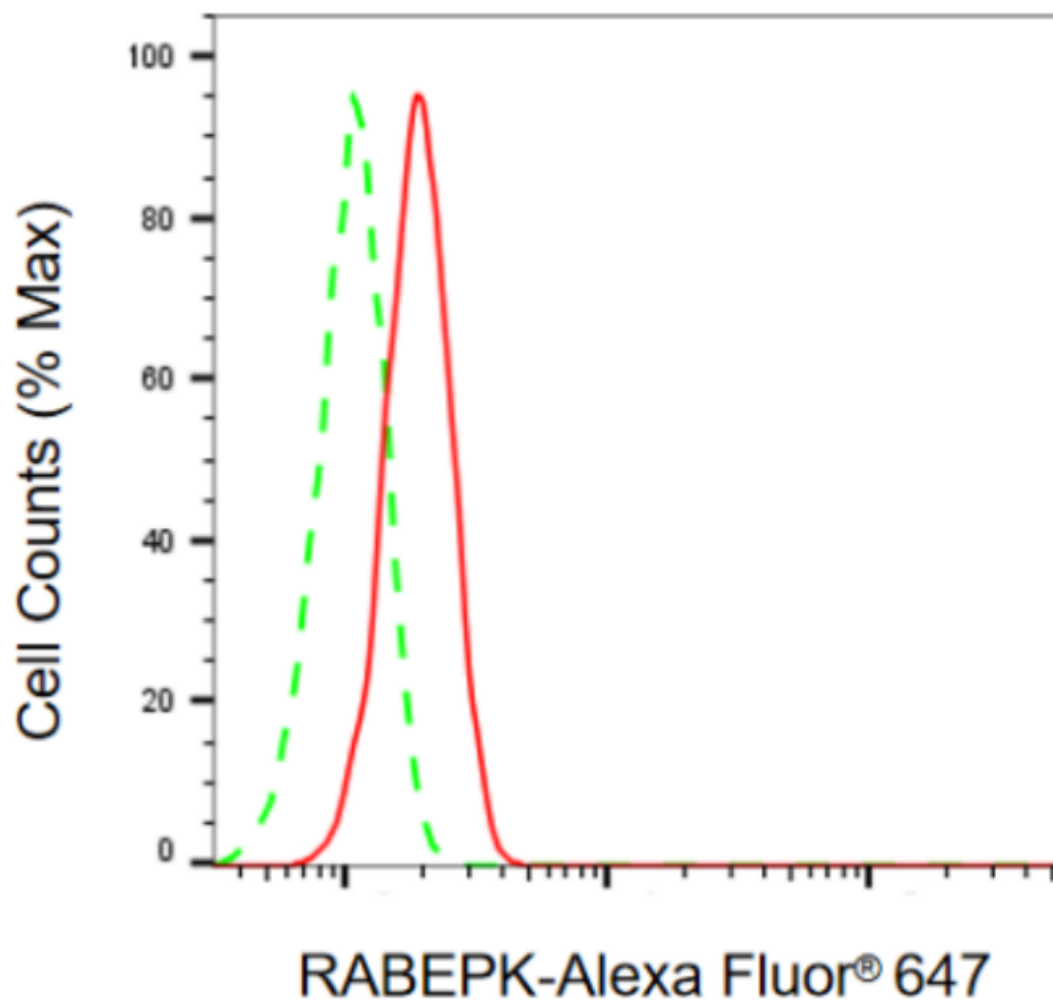
SUPPORT

SUPPORT@GENUINBIOTECH.COM
TEL: +1-540-855-7041

ORDERS

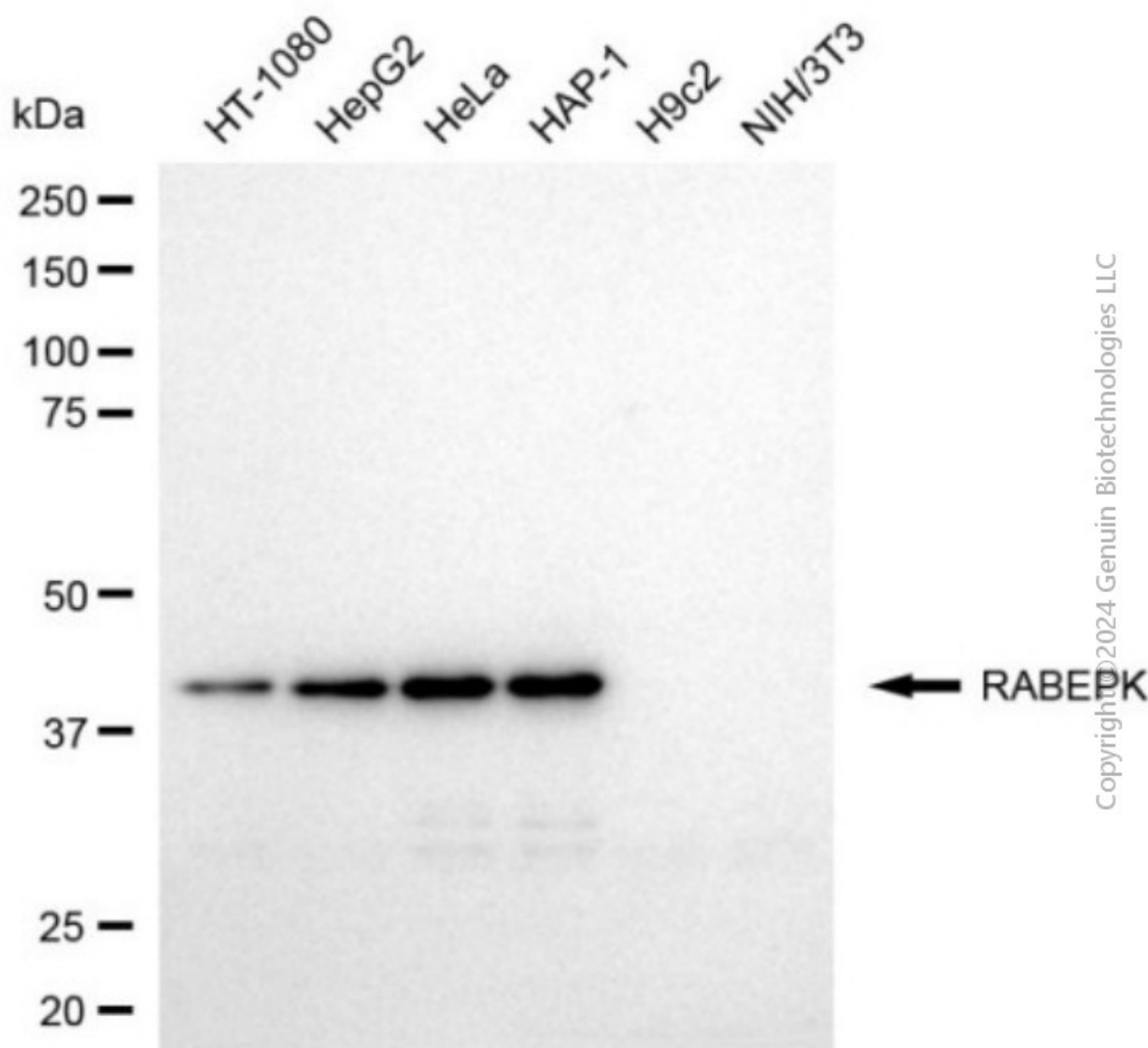
SALES@GENUINBIOTECH.COM
FAX: +1-540-855-7041

WWW.GENUINBIOTECH.COM



Copyright ©2024 Genuin Biotechnologies LLC

Flow cytometric analysis of RABEPK expression in HeLa cells using anti-RABEPK antibody (Cat#4496, 1:2,000). Green, isotype control; red, RABEPK.



Western blotting analysis using anti-RABEPK antibody (Cat#4496). Total cell lysates (30 µg) from various cell lines were loaded and separated by SDS-PAGE. The blot was incubated with anti-RABEPK antibody (Cat#4496, 1:5,000) and HRP-conjugated goat anti-rabbit secondary antibody (Cat#201, 1:20,000) respectively. Image was developed using NaQ™ ECL Substrate Kit (Cat#716).