

Anti-Phospholipid Scramblase 1 Recombinant Rabbit Monoclonal Antibody



Catalog #: 4500

Aliases

Phospholipid Scramblase 1; MMTRA1B; Ca(2+)-Dependent Phospholipid Scramblase 1; Erythrocyte Phospholipid Scramblase; Mg(2+)-Dependent Nuclease; PL Scramblase 1; EC 3.1.-.-; MmTRA1b

Background

Gene Name: PLSCR1

NCBI Gene Entry: [5359](#)

UniProt Entry: [O15162](#)

Application Information

Molecular Weight: Predicted, 35 kDa; observed, 35 kDa

Clonality: Rabbit monoclonal antibody

Clone ID: 24GB11530

Species Reactivity: Human, mouse, rat

Applications Tested: Western blotting (WB), flow cytometry (FCM), immunocytochemistry (IC)

Immunogen

A synthesized peptide derived from human Scramblase 1

Isotype

Rabbit IgG

Storage Buffer

Supplied in PBS (pH 7.4) containing 50% glycerol, and 0.02% sodium azide.

Storage

Store at -20 °C for one year.

Recommended Dilutions

Western Blotting (WB): 1:1,000-1:5,000

Flow Cytometry (FCM): 1:2,000

Immunocytochemistry (IC): 1:100-1:1,000

Note: This product is for research use only.

SUPPORT

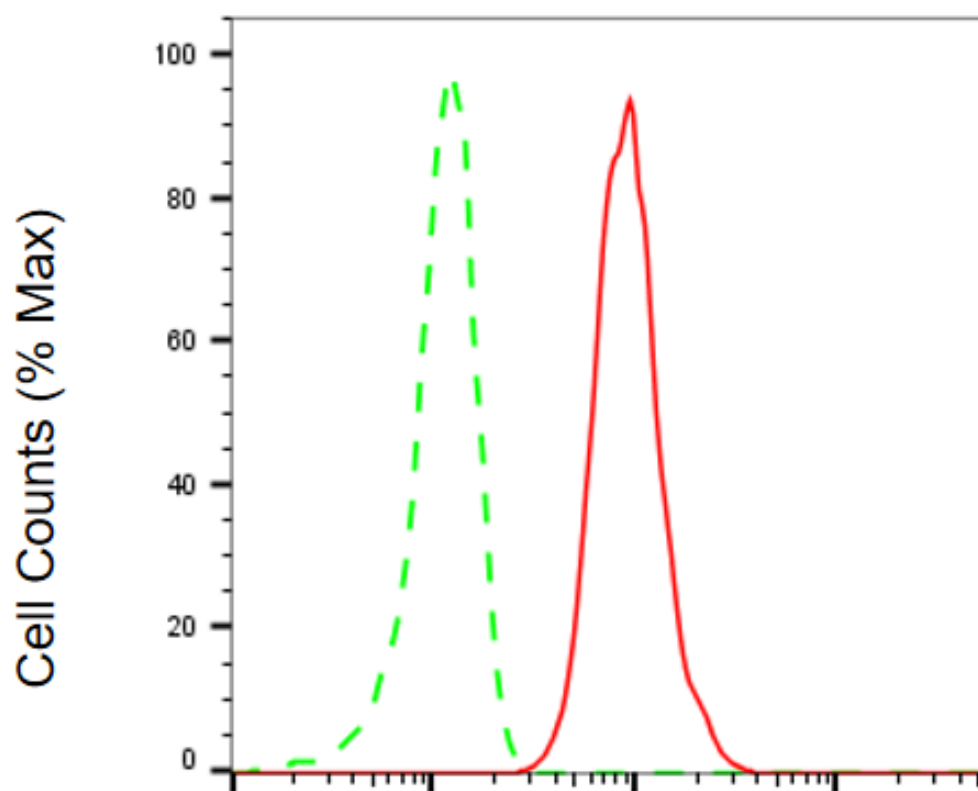
SUPPORT@GENUINBIOTECH.COM
TEL: +1-540-855-7041

ORDERS

SALES@GENUINBIOTECH.COM
FAX: +1-540-855-7041

WWW.GENUINBIOTECH.COM

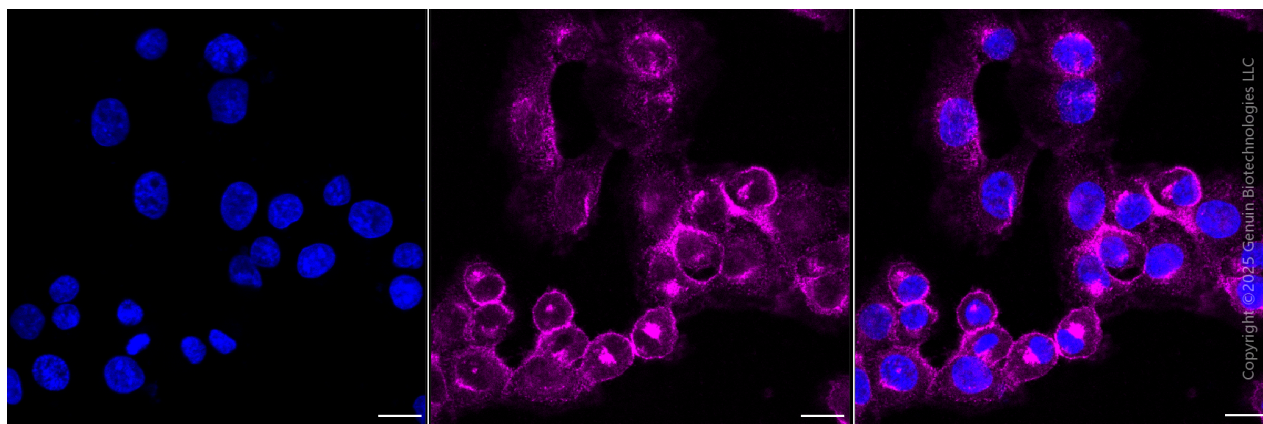
Validation Data



Copyright ©2025 Genuin Biotechnologies LLC

Phospholipid scramblase 1-Alexa Fluor® 647

Flow cytometric analysis of Phospholipid scramblase 1 expression in HT-1080 cells using anti-Phospholipid scramblase 1 antibody (Cat#4500, 1:2,000). Green, isotype control; red, Phospholipid scramblase 1.



Copyright ©2025 Genuin Biotechnologies LLC

Immunocytochemical staining of HT-1080 cells with anti-Phospholipid scramblase 1 antibody

SUPPORT

SUPPORT@GENUINBIOTECH.COM
TEL: +1-540-855-7041

ORDERS

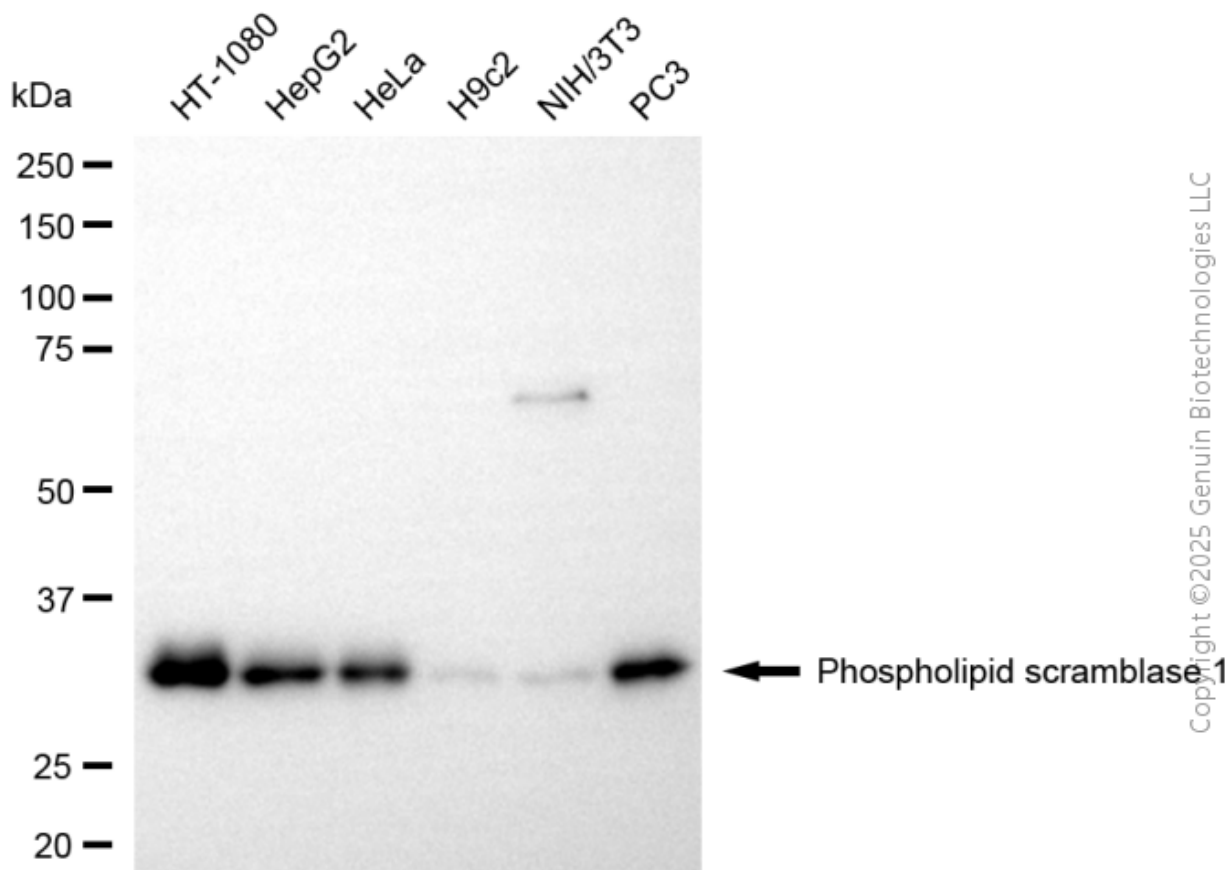
SALES@GENUINBIOTECH.COM
FAX: +1-540-855-7041

WWW.GENUINBIOTECH.COM

Anti-Phospholipid Scramblase 1 Recombinant Rabbit Monoclonal Antibody

PAGE 3

(Cat#4500, 1:1,000) . Nuclei were stained blue with DAPI; Phospholipid scramblase 1 was stained magenta with Alexa Fluor® 647. Images were taken using Leica stellaris 5. Protein abundance based on laser Intensity and smart gain: Medium. Scale bar, 20 μ m.



Western blotting analysis using anti-phospholipid scramblase 1 antibody (Cat#4500). Total cell lysates (30 μ g) from various cell lines were loaded and separated by SDS-PAGE. The blot was incubated with anti-phospholipid scramblase 1 antibody (Cat#4500, 1:5,000) and HRP-conjugated goat anti-rabbit secondary antibody (Cat#201, 1:20,000) respectively. Image was developed using NaQ™ ECL Substrate Kit (Cat#716).

SUPPORT

SUPPORT@GENUINBIOTECH.COM
TEL: +1-540-855-7041

ORDERS

SALES@GENUINBIOTECH.COM
FAX: +1-540-855-7041

WWW.GENUINBIOTECH.COM