

# Anti-Mov10 RNA Helicase Recombinant Rabbit Monoclonal Antibody



**Catalog #: 4501**

## Aliases

Mov10 RNA Helicase; Mov10 RISC Complex RNA Helicase; FSAP113; Gb110; Functional Spliceosome-Associated Protein 113; Moloney Leukemia Virus 10 Protein; Armitage Homolog; Helicase MOV-10; MGC2948; Mov10, Moloney Leukemia Virus 10, Homolog (Mouse); Mov10 (Moloney Leukemia Virus 10, Mouse) Homolog; Mov10, Moloney Leukemia Virus 10, Homolog; Putative Helicase MOV-10; EC 3.6.4.13; KIAA1631; EC 3.6.1

## Background

Gene Name: MOV10

NCBI Gene Entry: [4343](#)

UniProt Entry: [Q9HCE1](#)

## Application Information

Molecular Weight: Predicted, 114 kDa; observed, 114 kDa

Clonality: Rabbit monoclonal antibody

Clone ID: 24GB11535

Species Reactivity: Human, mouse, rat

Applications Tested: Western blotting (WB), flow cytometry (FCM), immunocytochemistry (IC)

## Immunogen

A synthesized peptide derived from human Mov10

## Isotype

Rabbit IgG

## Storage Buffer

Supplied in PBS (pH 7.4) containing 50% glycerol, and 0.02% sodium azide.

## Storage

Store at -20 °C for one year.

## Recommended Dilutions

Western Blotting (WB): 1:1,000-1:5,000

Flow Cytometry (FCM): 1:2,000

Immunocytochemistry (IC): 1:100-1:1,000

---

### SUPPORT

SUPPORT@GENUINBIOTECH.COM  
TEL: +1-540-855-7041

### ORDERS

SALES@GENUINBIOTECH.COM  
FAX: +1-540-855-7041

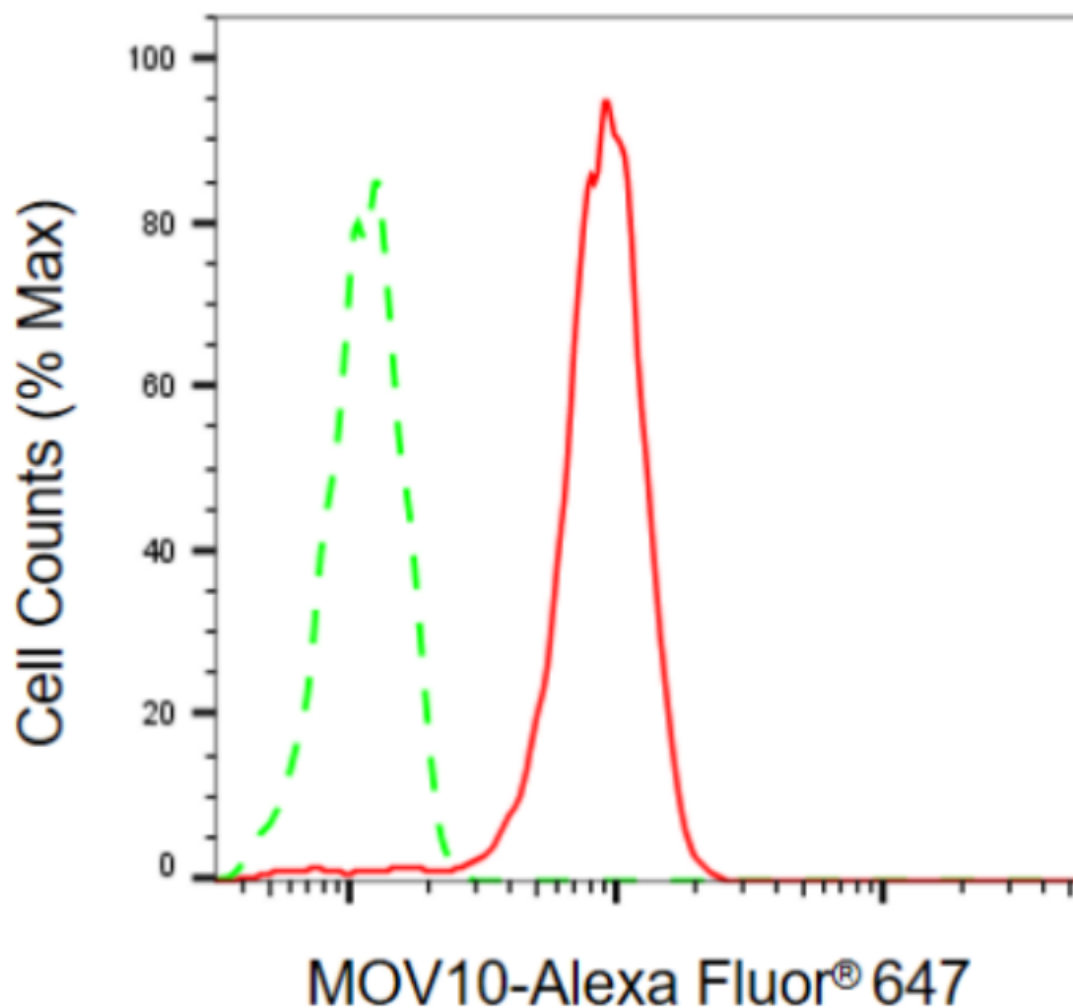
[WWW.GENUINBIOTECH.COM](http://WWW.GENUINBIOTECH.COM)

# Anti-Mov10 RNA Helicase Recombinant Rabbit Monoclonal Antibody

PAGE 2

**Note:** This product is for research use only.

## Validation Data



Copyright ©2024 Genuin Biotechnologies LLC

Flow cytometric analysis of MOV10 expression in HeLa cells using anti-MOV10 antibody (Cat#4501, 1:2,000). Green, isotype control; red, MOV10.

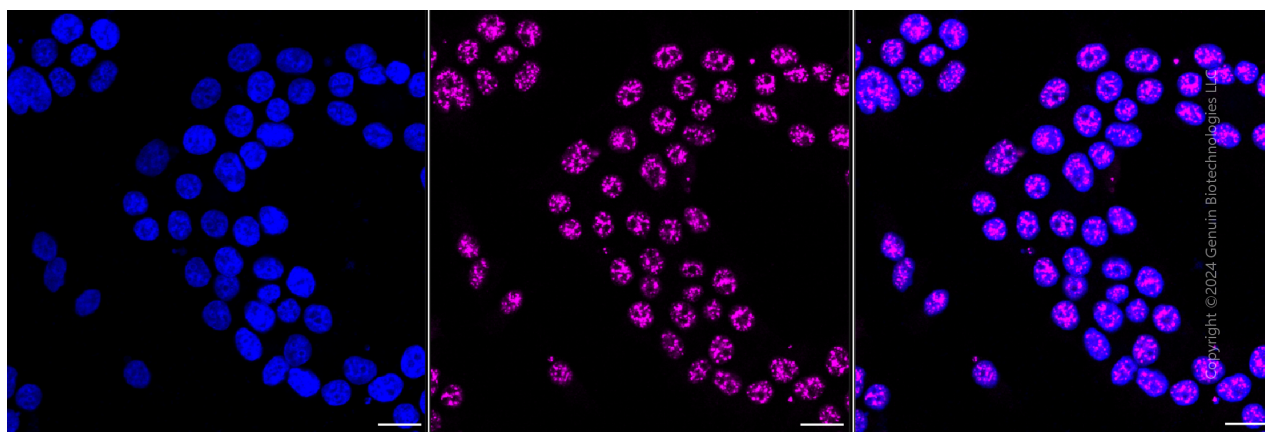
### SUPPORT

SUPPORT@GENUINBIOTECH.COM  
TEL: +1-540-855-7041

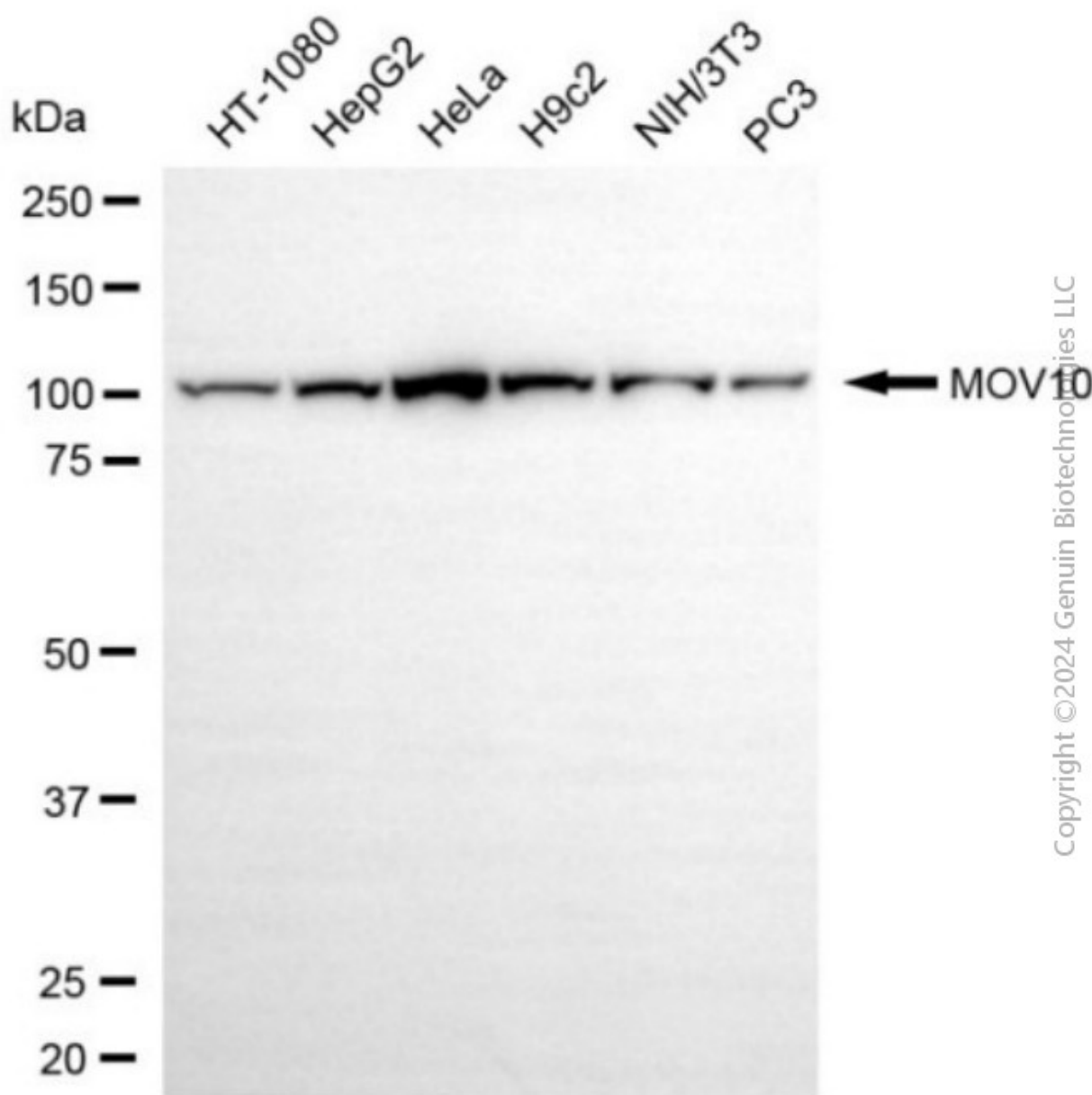
### ORDERS

SALES@GENUINBIOTECH.COM  
FAX: +1-540-855-7041

[WWW.GENUINBIOTECH.COM](http://WWW.GENUINBIOTECH.COM)



Immunocytochemical staining of HeLa cells with anti-MOV10 antibody (Cat#4501, 1:1,000). Nuclei were stained blue with DAPI; MOV10 was stained magenta with Alexa Fluor® 647. Images were taken using Leica stellaris 5. Protein abundance based on laser Intensity and smart gain: Medium. Scale bar, 20  $\mu$ m.



Western blotting analysis using anti-MOV10 antibody (Cat#4501). Total cell lysates (30 µg) from various cell lines were loaded and separated by SDS-PAGE. The blot was incubated with anti-MOV10 antibody (Cat#4501, 1:5,000) and HRP-conjugated goat anti-rabbit secondary antibody (Cat#201, 1:20,000) respectively. Image was developed using NaQ™ ECL Substrate Kit (Cat#716).