

Anti-EIF4A1 Recombinant Rabbit Monoclonal Antibody



Catalog #: 4502

Aliases

EIF4A1; Eukaryotic Translation Initiation Factor 4A1; DDX2A; EIF-4A; EIF4A; ATP-Dependent RNA Helicase EIF4A-1; Eukaryotic Initiation Factor 4A-I; EIF-4A-I; EIF4A-I; Eukaryotic Translation Initiation Factor 4A, Isoform 1; Eukaryotic Translation Initiation Factor 4A; Eukaryotic Initiation Factor 4A; EC 3.6.4.13; EC 3.6.1

Background

Gene Name: EIF4A1

NCBI Gene Entry: [1973](#)

UniProt Entry: [P60842](#)

Application Information

Molecular Weight: Predicted, 46 kDa; observed, 46 kDa

Clonality: Rabbit monoclonal antibody

Clone ID: 24GB11540

Species Reactivity: Human, mouse, rat

Applications Tested: Western blotting (WB), flow cytometry (FCM), immunocytochemistry (IC)

Immunogen

A synthesized peptide derived from human eIF4A1

Isotype

Rabbit IgG

Storage Buffer

Supplied in PBS (pH 7.4) containing 50% glycerol, and 0.02% sodium azide.

Storage

Store at -20 °C for one year.

Recommended Dilutions

Western Blotting (WB): 1:1,000-1:5,000

Flow Cytometry (FCM): 1:2,000

Immunocytochemistry (IC): 1:100-1:1,000

SUPPORT

SUPPORT@GENUINBIOTECH.COM
TEL: +1-540-855-7041

ORDERS

SALES@GENUINBIOTECH.COM
FAX: +1-540-855-7041

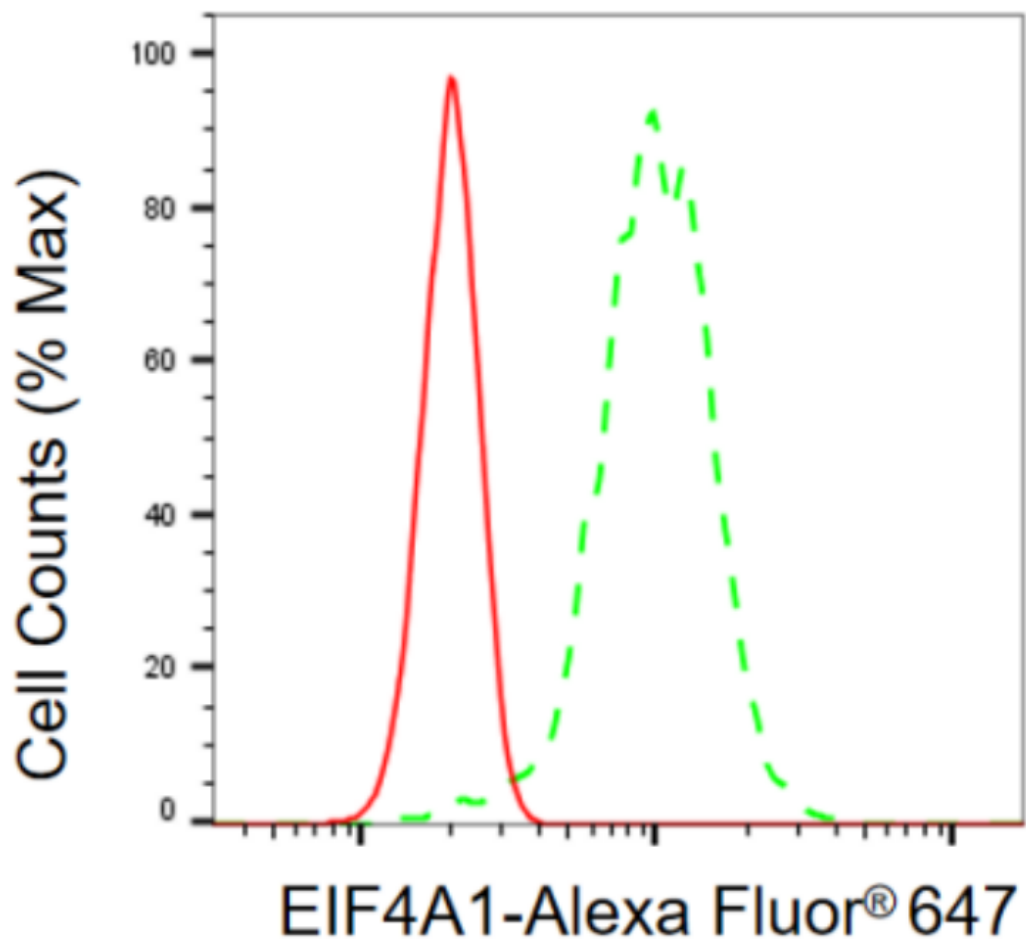
WWW.GENUINBIOTECH.COM

Anti-EIF4A1 Recombinant Rabbit Monoclonal Antibody

PAGE 2

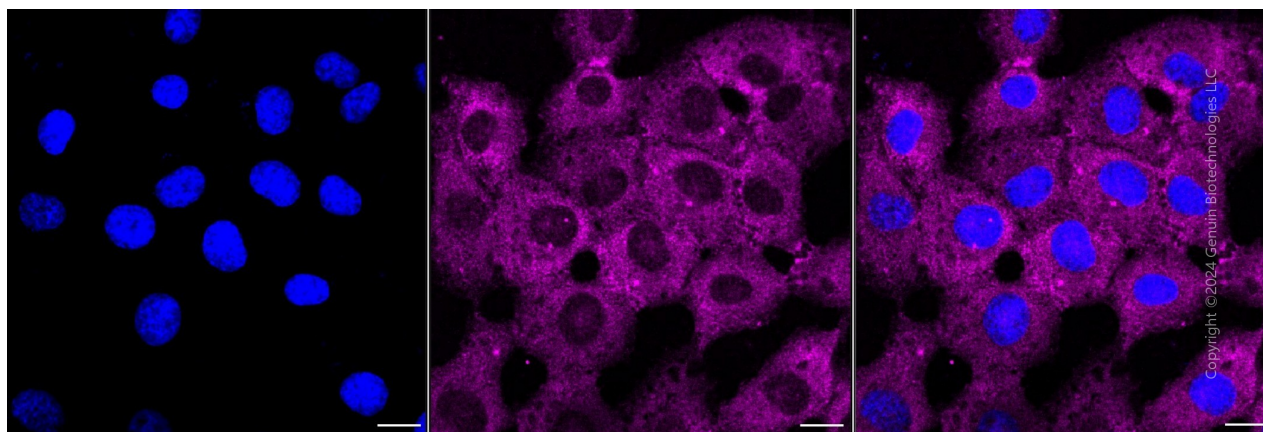
Note: This product is for research use only.

Validation Data



Copyright ©2024 Genuin Biotechnologies LLC

Flow cytometric analysis of EIF4A1 expression in HT-1080 cells using anti-EIF4A1 antibody (Cat#4502, 1:2,000). Green, isotype control; red, EIF4A1.



Copyright ©2024 Genuin Biotechnologies LLC

Immunocytochemical staining of HT-1080 cells with anti-EIF4A1 antibody (Cat#4502, 1:1,000) .

SUPPORT

SUPPORT@GENUINBIOTECH.COM
TEL: +1-540-855-7041

ORDERS

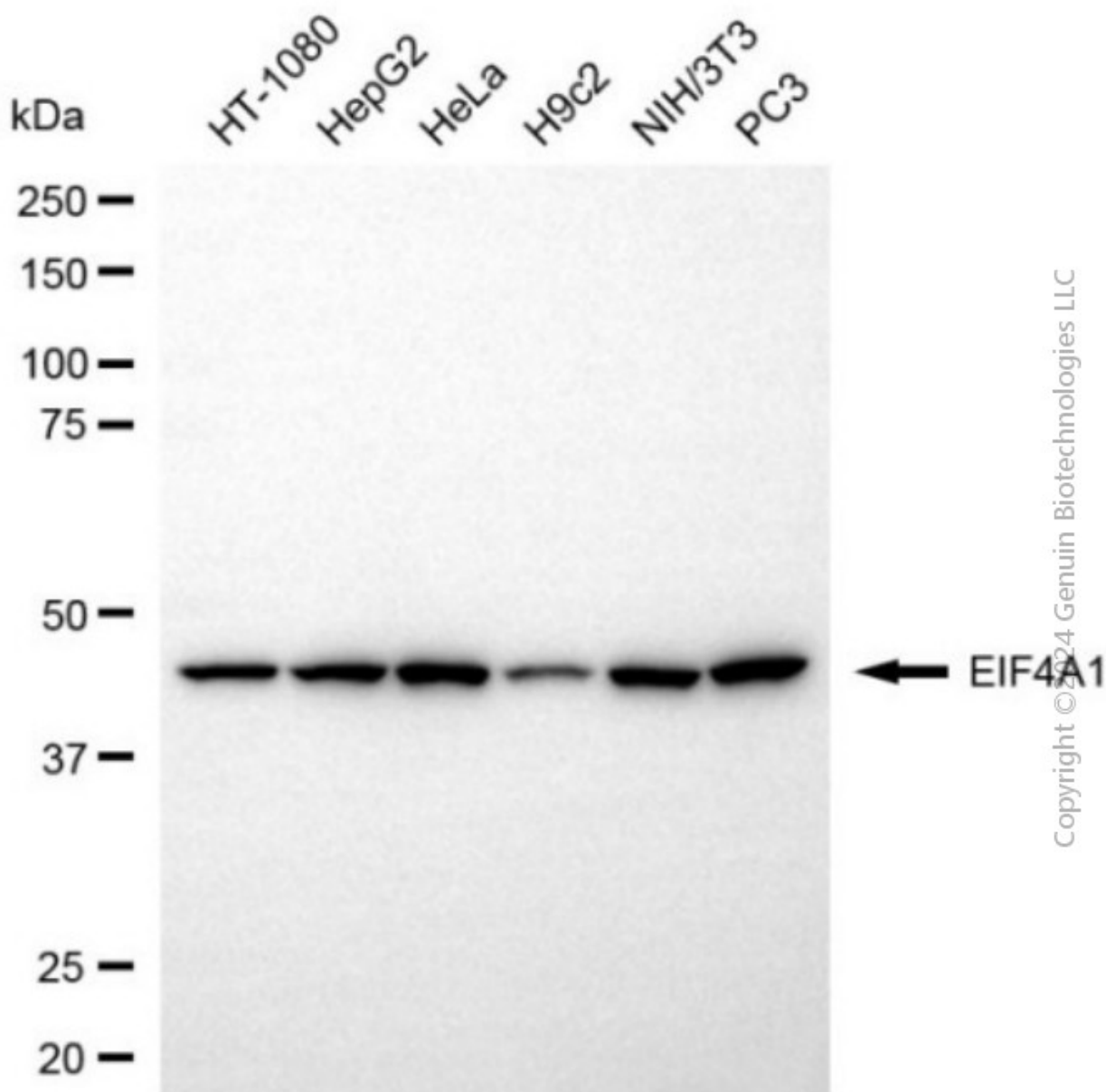
SALES@GENUINBIOTECH.COM
FAX: +1-540-855-7041

WWW.GENUINBIOTECH.COM

Anti-EIF4A1 Recombinant Rabbit Monoclonal Antibody

PAGE 3

Nuclei were stained blue with DAPI; EIF4A1 was stained magenta with Alexa Fluor® 647. Images were taken using Leica stellaris 5. Protein abundance based on laser Intensity and smart gain: Medium. Scale bar, 20 μ m.



Western blotting analysis using anti-EIF4A1 antibody (Cat#4502). Total cell lysates (30 μ g) from various cell lines were loaded and separated by SDS-PAGE. The blot was incubated with anti-EIF4A1 antibody (Cat#4502, 1:5,000) and HRP-conjugated goat anti-rabbit secondary antibody (Cat#201, 1:20,000) respectively. Image was developed using NaQ™ ECL Substrate Kit (Cat#716).

SUPPORT

SUPPORT@GENUINBIOTECH.COM
TEL: +1-540-855-7041

ORDERS

SALES@GENUINBIOTECH.COM
FAX: +1-540-855-7041

WWW.GENUINBIOTECH.COM