

Anti-Proliferation-Associated 2G4 Recombinant Rabbit Monoclonal Antibody



Catalog #: 4504

Aliases

Proliferation-Associated 2G4; EBP1; IRES-Specific Cellular Transacting Factor 45; Proliferation-Associated Protein 2G4; Proliferation-Associated 2G4, 38kDa; Proliferation-Associated 2G4, 38kD; Cell Cycle Protein P38-2G4 Homolog; ErbB-3 Receptor Binding Protein; ErbB3-Binding Protein 1; ITAF45; HG4-1; ErbB3-Binding Protein Ebp1; ErbB-3 Binding Protein 1; P38-2G4

Background

Gene Name: PA2G4

NCBI Gene Entry: [5036](#)

UniProt Entry: [Q9UQ80](#)

Application Information

Molecular Weight: Predicted, 44 kDa; observed, 42 kDa

Clonality: Rabbit monoclonal antibody

Clone ID: 24GB11550

Species Reactivity: Human, mouse, rat

Applications Tested: Western blotting (WB), flow cytometry (FCM), immunocytochemistry (IC)

Immunogen

A synthesized peptide derived from human EBP1 / PA2G4

Isotype

Rabbit IgG

Storage Buffer

Supplied in PBS (pH 7.4) containing 50% glycerol, and 0.02% sodium azide.

Storage

Store at -20 °C for one year.

Recommended Dilutions

Western Blotting (WB): 1:1,000-1:5,000

Flow Cytometry (FCM): 1:2,000

Immunocytochemistry (IC): 1:100-1:1,000

SUPPORT

SUPPORT@GENUINBIOTECH.COM
TEL: +1-540-855-7041

ORDERS

SALES@GENUINBIOTECH.COM
FAX: +1-540-855-7041

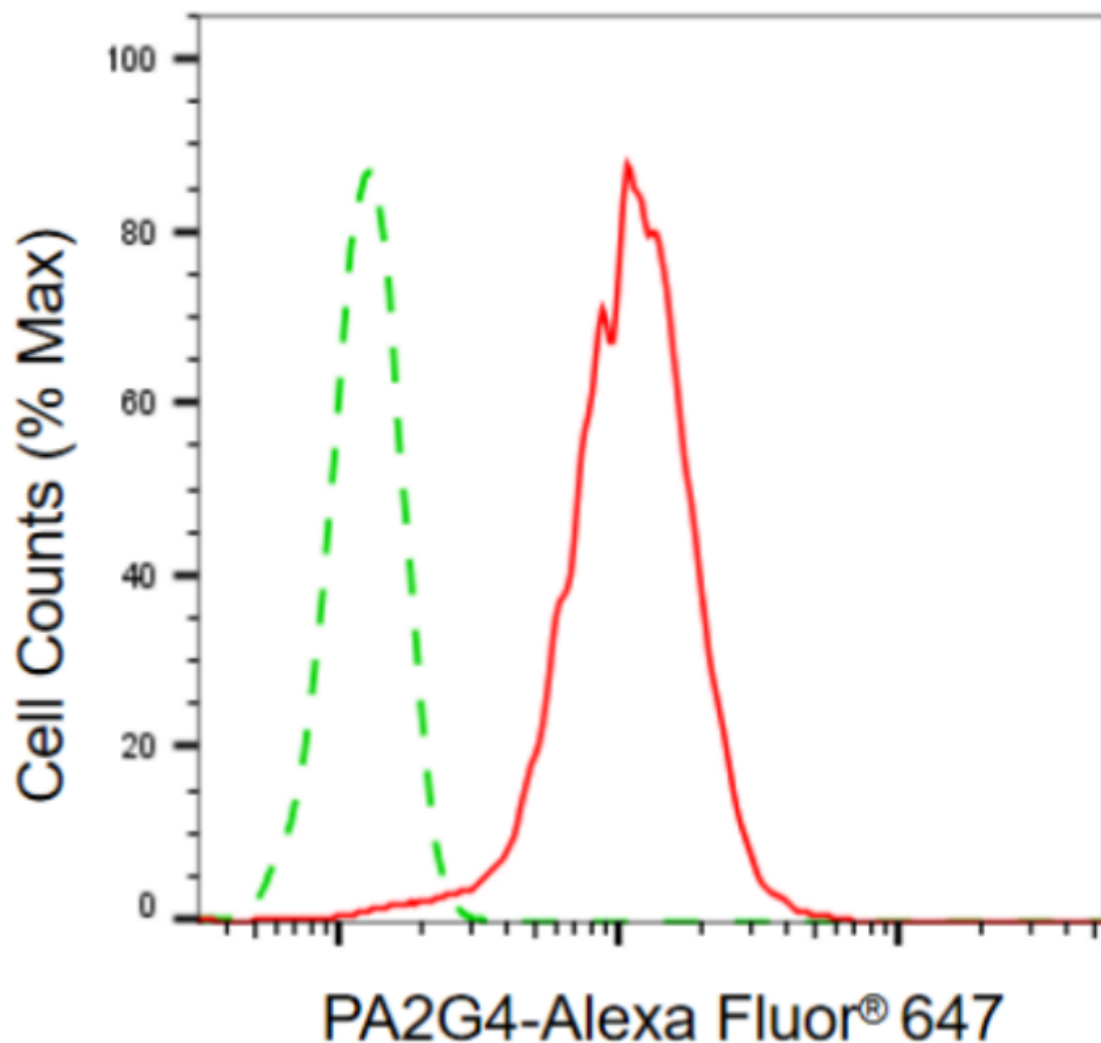
WWW.GENUINBIOTECH.COM

Anti-Proliferation-Associated 2G4 Recombinant Rabbit Monoclonal Antibody

PAGE 2

Note: This product is for research use only.

Validation Data



Copyright ©2024 Genuin Biotechnologies LLC

Flow cytometric analysis of PA2G4 expression in HepG2 cells using anti-PA2G4 antibody (Cat#4504, 1:2,000). Green, isotype control; red, PA2G4.

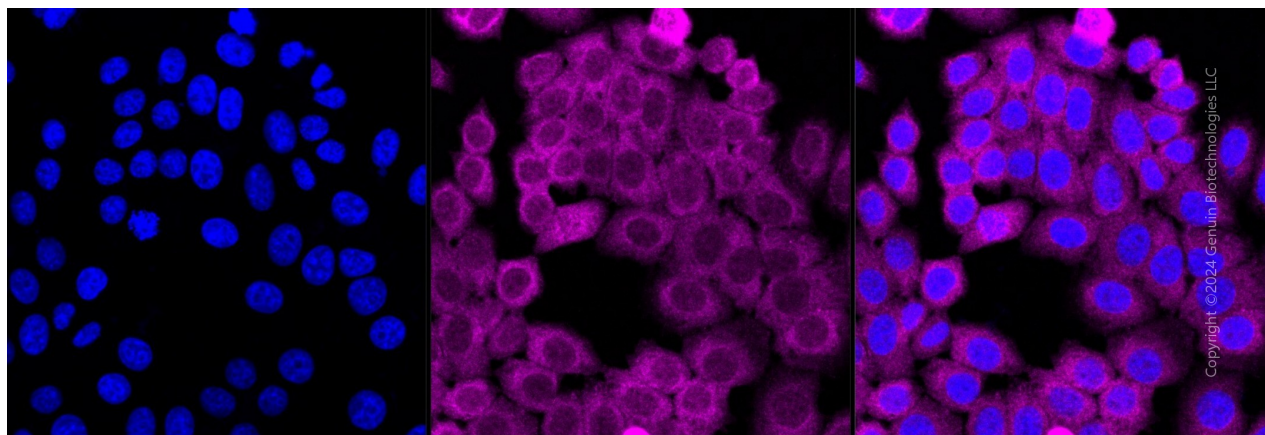
SUPPORT

SUPPORT@GENUINBIOTECH.COM
TEL: +1-540-855-7041

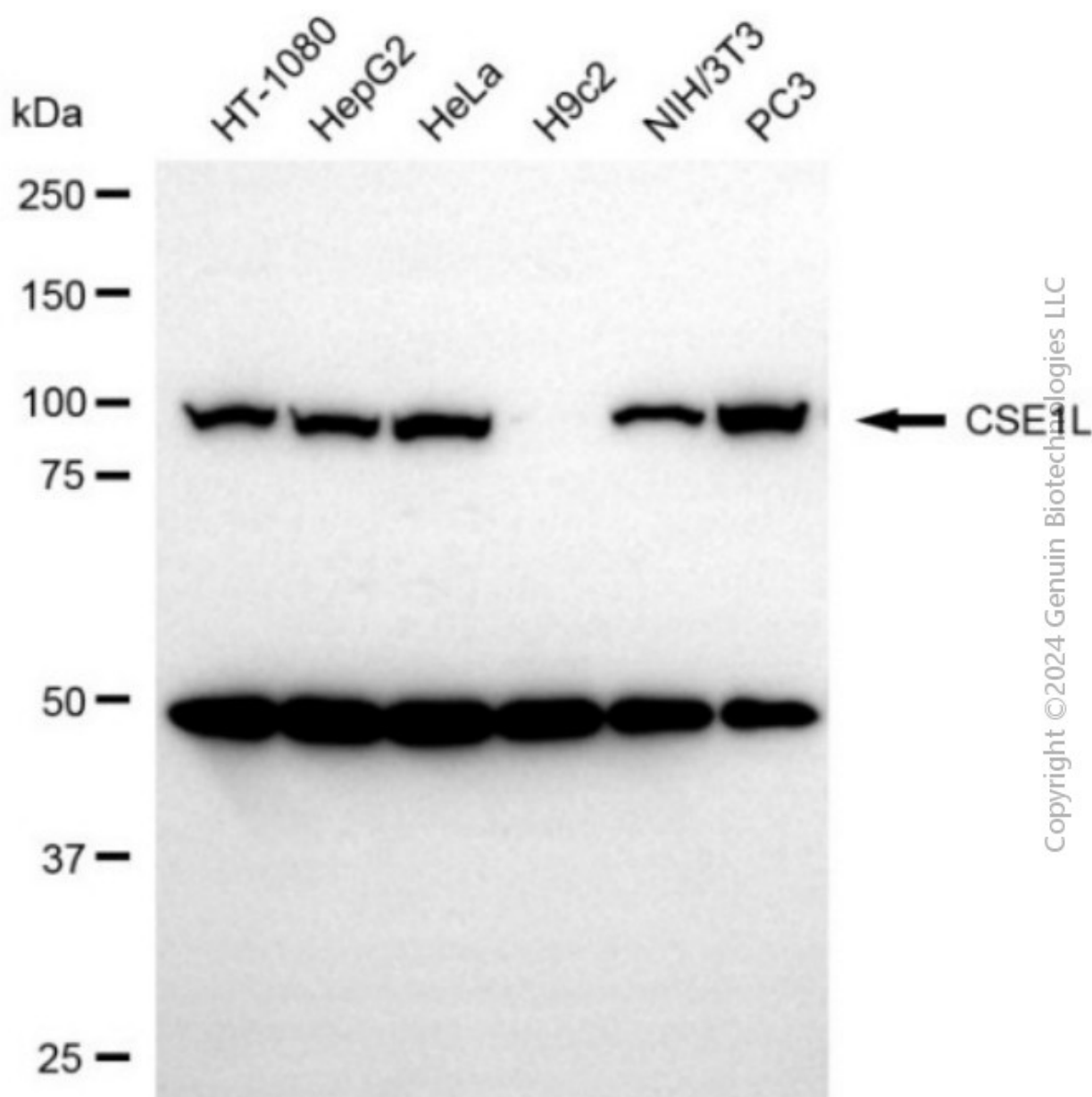
ORDERS

SALES@GENUINBIOTECH.COM
FAX: +1-540-855-7041

WWW.GENUINBIOTECH.COM



Immunocytochemical staining of HepG2 cells with anti-PA2G4 antibody (Cat#4504, 1:1,000). Nuclei were stained blue with DAPI; PA2G4 was stained magenta with Alexa Fluor® 647. Images were taken using Leica stellaris 5. Protein abundance based on laser Intensity and smart gain: Medium. Scale bar, 20 μ m.



Copyright ©2024 Genuin Biotechnologies LLC

Western blotting analysis using anti-PA2G4 antibody (Cat#4504). Total cell lysates (30 µg) from various cell lines were loaded and separated by SDS-PAGE. The blot was incubated with anti-PA2G4 antibody (Cat#4504, 1:5,000) and HRP-conjugated goat anti-rabbit secondary antibody (Cat#201, 1:20,000) respectively. Image was developed using NaQ™ ECL Substrate Kit (Cat#716).