

# Anti-Peptidylprolyl Isomerase D Recombinant Rabbit Monoclonal Antibody



**Catalog #: 4508**

## Aliases

Peptidylprolyl Isomerase D; CYP-40; CypD; Peptidyl-Prolyl Cis-Trans Isomerase D; Cyclophilin-Related Protein; Cyclophilin 40; Rotamase D; EC 5.2.1.8; PPIase D; 40 KDa Peptidyl-Prolyl Cis-Trans Isomerase D; Peptidylprolyl Isomerase D (Cyclophilin D); 40 KDa Peptidyl-Prolyl Cis-Trans Isomerase; Testicular Tissue Protein Li 147; Cyclophilin-40; Cyclophilin D; CYP40; CYPD

## Background

Gene Name: PPID

NCBI Gene Entry: [5481](#)

UniProt Entry: [Q08752](#)

## Application Information

Molecular Weight: Predicted, 41 kDa; observed, 36 kDa

Clonality: Rabbit monoclonal antibody

Clone ID: 24GB11570

Species Reactivity: Human, mouse, rat

Applications Tested: Western blotting (WB), flow cytometry (FCM), immunocytochemistry (IC)

## Immunogen

A synthesized peptide derived from human Cyclophilin 40

## Isotype

Rabbit IgG

## Storage Buffer

Supplied in PBS (pH 7.4) containing 50% glycerol, and 0.02% sodium azide.

## Storage

Store at -20 °C for one year.

## Recommended Dilutions

Western Blotting (WB): 1:1,000-1:5,000

Flow Cytometry (FCM): 1:2,000

Immunocytochemistry (IC): 1:100-1:1,000

---

### SUPPORT

SUPPORT@GENUINBIOTECH.COM  
TEL: +1-540-855-7041

### ORDERS

SALES@GENUINBIOTECH.COM  
FAX: +1-540-855-7041

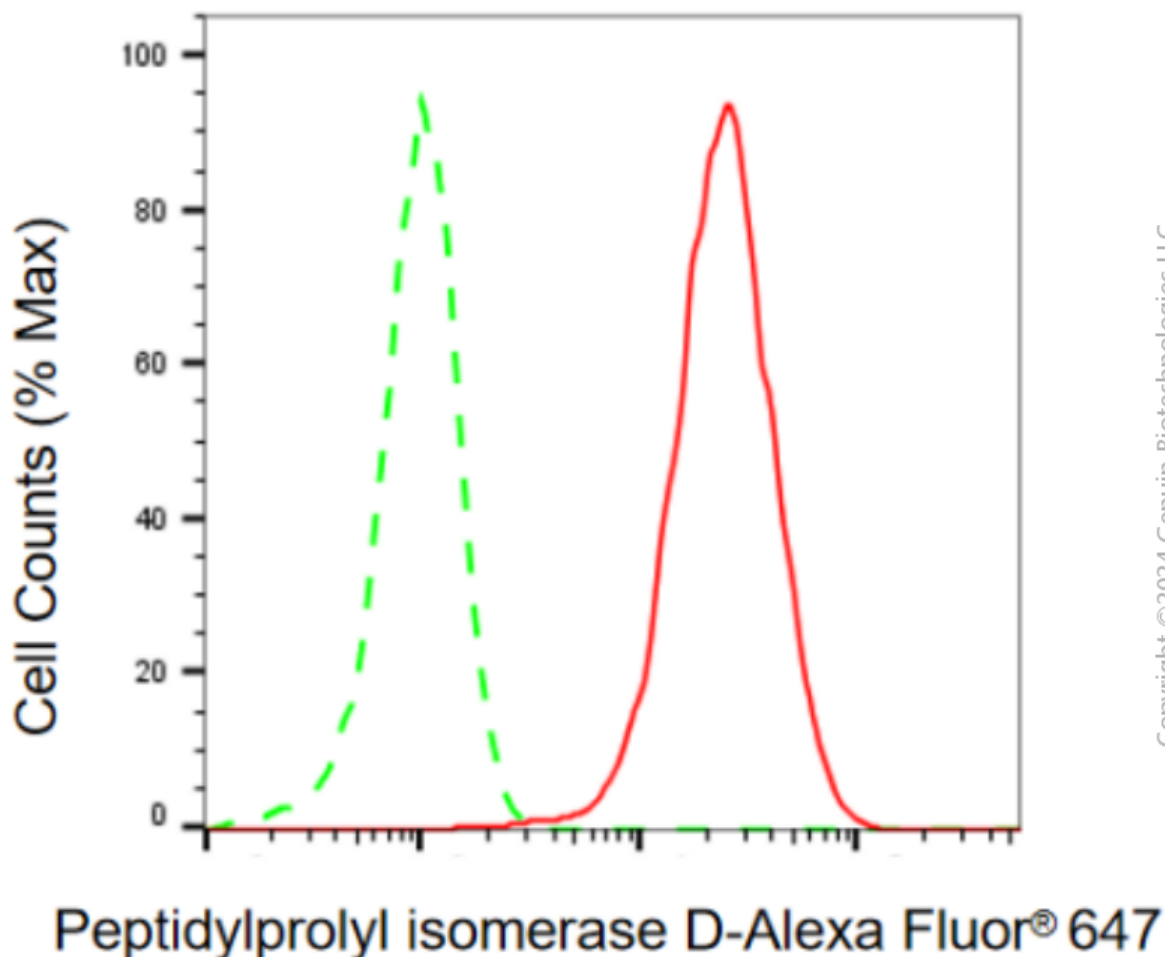
[WWW.GENUINBIOTECH.COM](http://WWW.GENUINBIOTECH.COM)

# Anti-Peptidylprolyl Isomerase D Recombinant Rabbit Monoclonal Antibody

PAGE 2

**Note:** This product is for research use only.

## Validation Data



Flow cytometric analysis of peptidylprolyl isomerase D expression in HepG2 cells using anti-peptidylprolyl isomerase D antibody (Cat#4508, 1:2,000). Green, isotype control; red, peptidylprolyl isomerase D.

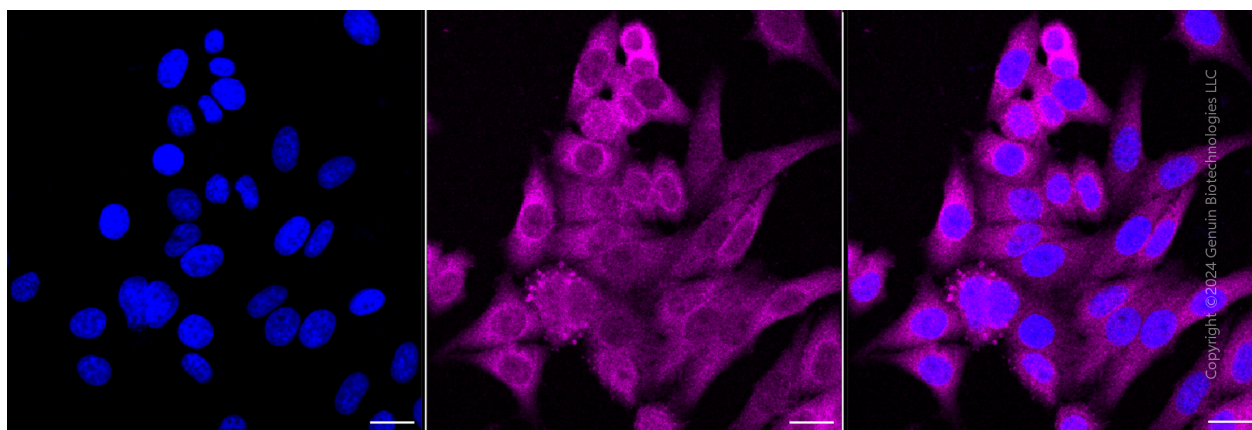
### SUPPORT

SUPPORT@GENUINBIOTECH.COM  
TEL: +1-540-855-7041

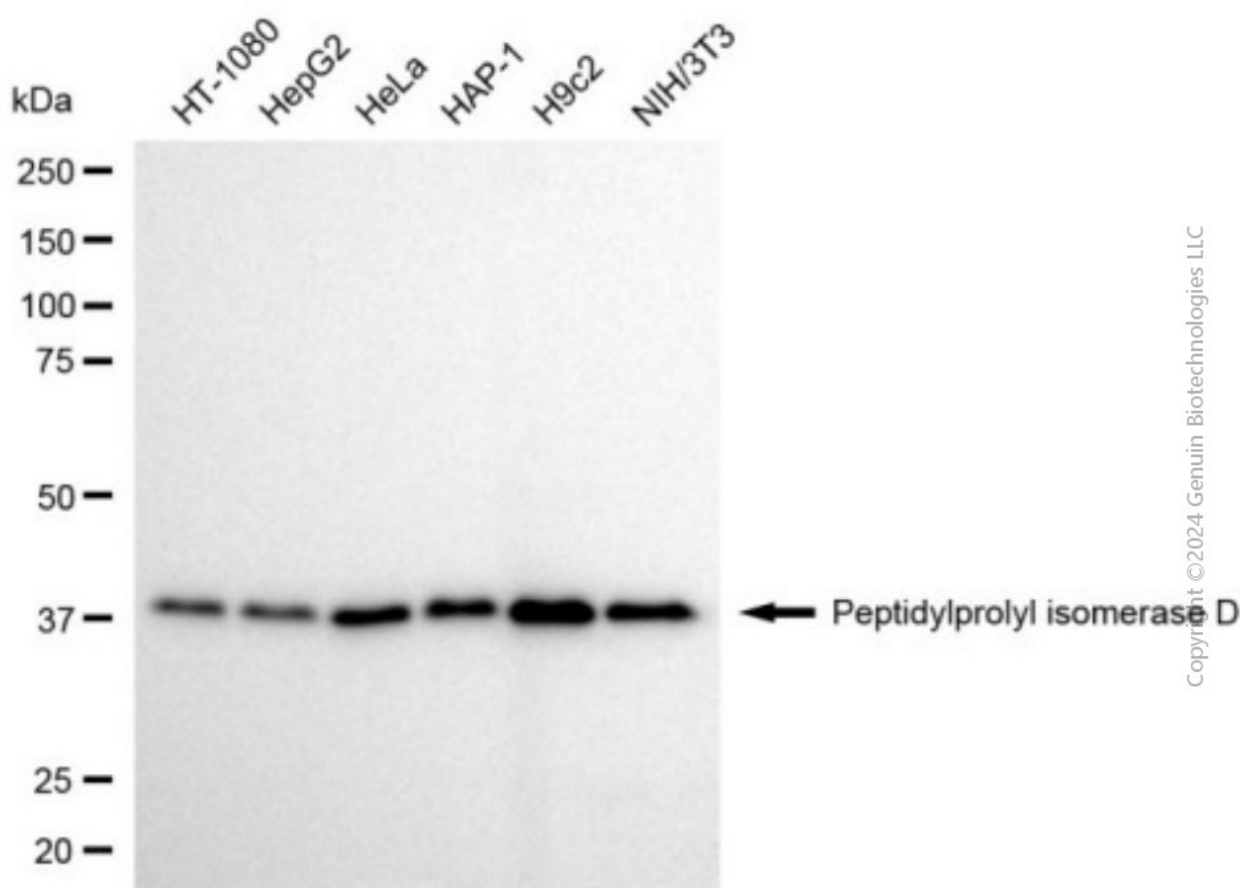
### ORDERS

SALES@GENUINBIOTECH.COM  
FAX: +1-540-855-7041

[WWW.GENUINBIOTECH.COM](http://WWW.GENUINBIOTECH.COM)



Immunocytochemical staining of HepG2 cells with anti-peptidylprolyl isomerase D antibody (Cat#4508, 1:1,000). Nuclei were stained blue with DAPI; Peptidylprolyl isomerase D was stained magenta with Alexa Fluor® 647. Images were taken using Leica stellaris 5. Protein abundance based on laser Intensity and smart gain: Medium. Scale bar, 20  $\mu$ m.



Western blotting analysis using anti-peptidylprolyl isomerase D antibody (Cat#4508). Total cell lysates (30  $\mu$ g) from various cell lines were loaded and separated by SDS-PAGE. The blot was incubated with anti-peptidylprolyl isomerase D antibody (Cat#4508, 1:5,000) and HRP-conjugated goat anti-rabbit secondary antibody (Cat#201, 1:20,000) respectively. Image was developed using

## SUPPORT

SUPPORT@GENUINBIOTECH.COM  
TEL: +1-540-855-7041

## ORDERS

SALES@GENUINBIOTECH.COM  
FAX: +1-540-855-7041

[WWW.GENUINBIOTECH.COM](http://WWW.GENUINBIOTECH.COM)

# **Anti-Peptidylprolyl Isomerase D Recombinant Rabbit Monoclonal Antibody**

PAGE 4

NaQ™ ECL Substrate Kit (Cat#716).

---

## **SUPPORT**

SUPPORT@GENUINBIOTECH.COM  
TEL: +1-540-855-7041

## **ORDERS**

SALES@GENUINBIOTECH.COM  
FAX: +1-540-855-7041

**WWW.GENUINBIOTECH.COM**