

Anti-Ribosomal Protein S6 Kinase B2 Recombinant Rabbit Monoclonal Antibody



Catalog #: 4509

Aliases

Ribosomal Protein S6 Kinase B2; STK14B; P70-BETA; P70S6Kb; S6Kbeta; S6KB; KLS; 70 KDa Ribosomal Protein S6 Kinase 2; Serine/Threonine-Protein Kinase 14B; Ribosomal Protein S6 Kinase Beta-2; P70 Ribosomal S6 Kinase Beta; S6 Kinase-Related Kinase; P70 S6 Kinase Beta; P70 S6K-Beta; EC 2.7.11.1; S6K-Beta-2; P70-S6K 2; S6K-Beta; P70 S6KB; P70S6K2; S6K2; SRK; Ribosomal Protein S6 Kinase, 70kDa, Polypeptide 2; Ribosomal Protein S6 Kinase, 70kD, Polypeptide 2; Serine/Threonine-Protein Kinase 14 Beta; P70(S6K)-Beta; P70-Beta-1; P70-Beta-2; S6K-Beta2; EC 2.7.11; P70-Beta; S6KI(2); S6K β

Background

Gene Name: RPS6KB2

NCBI Gene Entry: [6199](#)

UniProt Entry: [Q9UBS0](#)

Application Information

Molecular Weight: Predicted, 53 kDa; observed, 53 kDa

Clonality: Rabbit monoclonal antibody

Clone ID: 24GB11575

Species Reactivity: Human, mouse, rat

Applications Tested: Western blotting (WB), flow cytometry (FCM), immunocytochemistry (IC)

Immunogen

A synthesized peptide derived from human P70 S6 Kinase beta

Isotype

Rabbit IgG

Storage Buffer

Supplied in PBS (pH 7.4) containing 50% glycerol, and 0.02% sodium azide.

Storage

Store at -20 °C for one year.

Recommended Dilutions

Western Blotting (WB): 1:1,000-1:5,000

Flow Cytometry (FCM): 1:2,000

SUPPORT

SUPPORT@GENUINBIOTECH.COM
TEL: +1-540-855-7041

ORDERS

SALES@GENUINBIOTECH.COM
FAX: +1-540-855-7041

WWW.GENUINBIOTECH.COM

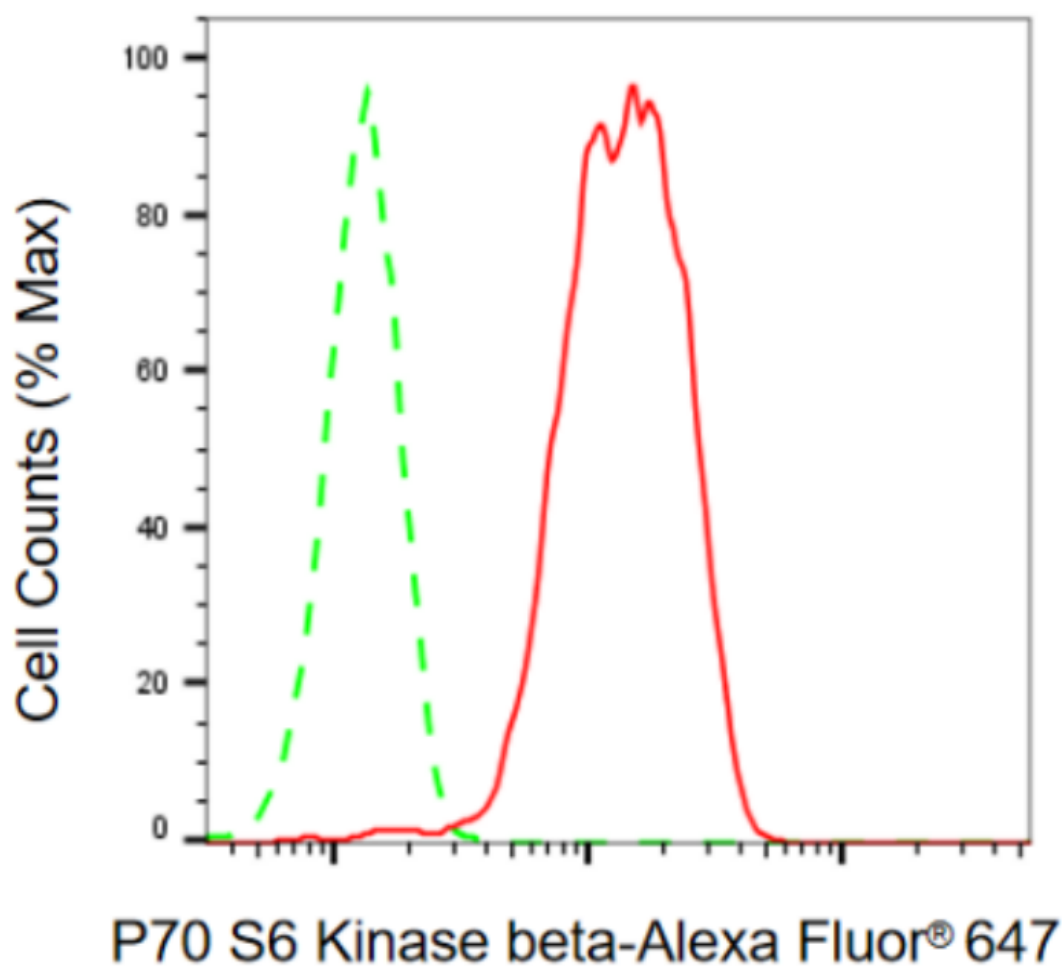
Anti-Ribosomal Protein S6 Kinase B2 Recombinant Rabbit Monoclonal Antibody

PAGE 2

Immunocytochemistry (IC): 1:100-1:1,000

Note: This product is for research use only.

Validation Data



Copyright ©2024 Genuin Biotechnologies LLC

Flow cytometric analysis of P70 S6 Kinase beta expression in HeLa cells using anti-P70 S6 Kinase beta antibody (Cat#4509, 1:2,000). Green, isotype control; red, P70 S6 Kinase beta.

SUPPORT

SUPPORT@GENUINBIOTECH.COM
TEL: +1-540-855-7041

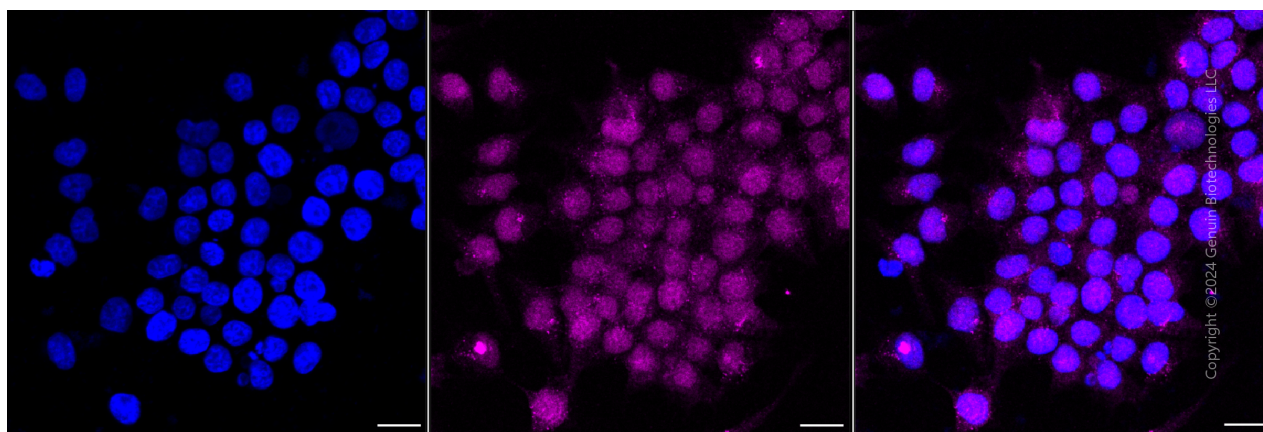
ORDERS

SALES@GENUINBIOTECH.COM
FAX: +1-540-855-7041

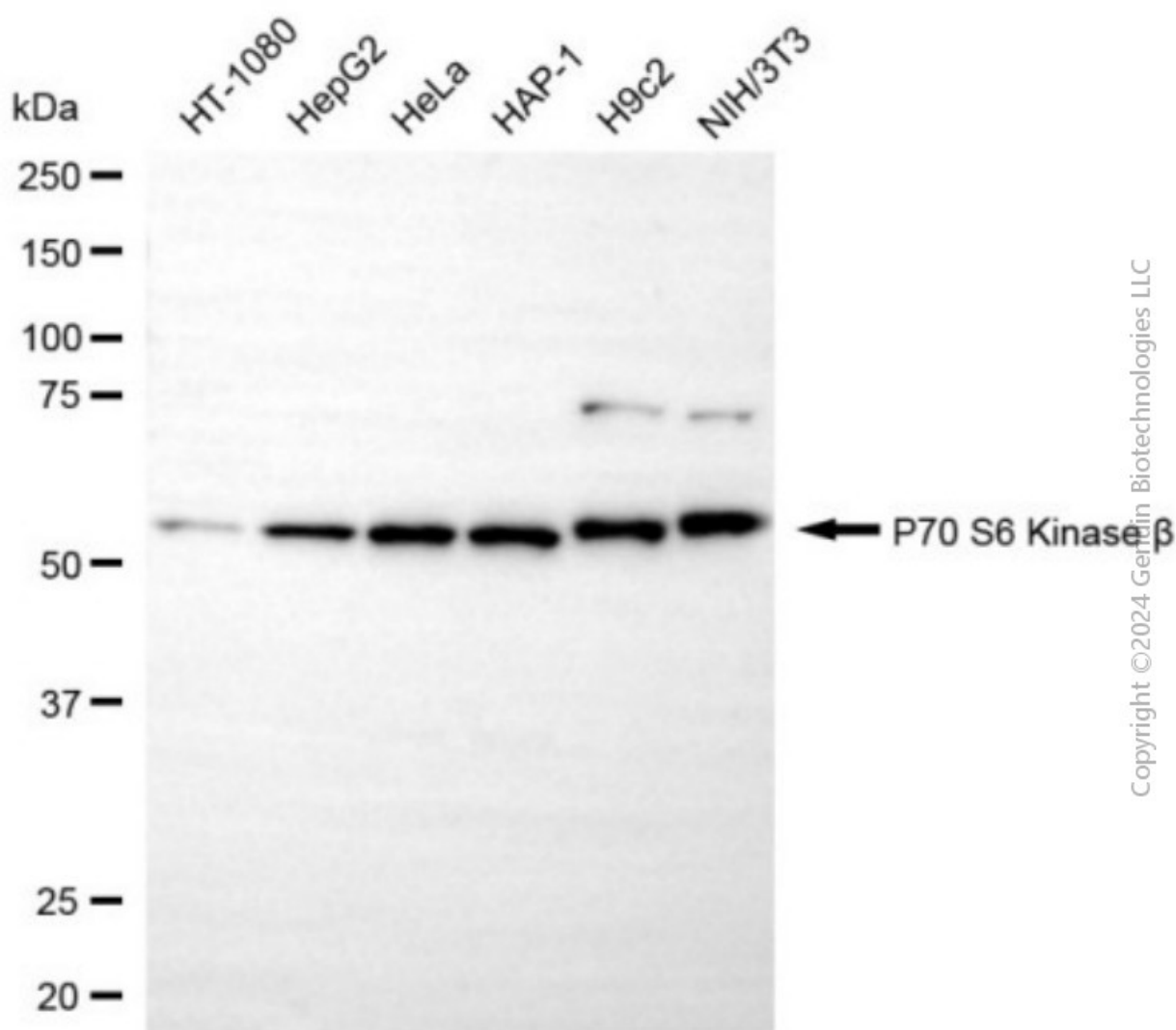
WWW.GENUINBIOTECH.COM

Anti-Ribosomal Protein S6 Kinase B2 Recombinant Rabbit Monoclonal Antibody

PAGE 3



Immunocytochemical staining of HeLa cells with anti-P70 S6 Kinase beta antibody (Cat#4509, 1:1,000). Nuclei were stained blue with DAPI; P70 S6 Kinase beta was stained magenta with Alexa Fluor® 647. Images were taken using Leica stellaris 5. Protein abundance based on laser Intensity and smart gain: Medium. Scale bar, 20 μ m.



SUPPORT

SUPPORT@GENUINBIOTECH.COM
TEL: +1-540-855-7041

ORDERS

SALES@GENUINBIOTECH.COM
FAX: +1-540-855-7041

WWW.GENUINBIOTECH.COM

Anti-Ribosomal Protein S6 Kinase B2 Recombinant Rabbit Monoclonal Antibody

PAGE 4

Western blotting analysis using anti-P70 S6 Kinase beta antibody (Cat#4509). Total cell lysates (30 µg) from various cell lines were loaded and separated by SDS-PAGE. The blot was incubated with anti-P70 S6 Kinase beta antibody (Cat#4509, 1:5,000) and HRP-conjugated goat anti-rabbit secondary antibody (Cat#201, 1:20,000) respectively. Image was developed using NaQ™ ECL Substrate Kit (Cat#716).

SUPPORT

SUPPORT@GENUINBIOTECH.COM
TEL: +1-540-855-7041

ORDERS

SALES@GENUINBIOTECH.COM
FAX: +1-540-855-7041

WWW.GENUINBIOTECH.COM