

Anti-Alkaline phosphatase Recombinant Rabbit Monoclonal Antibody



Catalog #: 4511

Aliases

ALPI; Alkaline Phosphatase, Intestinal; IAP; Intestinal Alkaline Phosphatase; Intestinal-Type Alkaline Phosphatase; EC 3.1.3.1; Alkaline Phosphomonoesterase; Glycerophosphatase; Kasahara Isozyme

Background

Gene Name: ALPI

NCBI Gene Entry: [248](#)

UniProt Entry: [P09923](#)

Application Information

Molecular Weight: Predicted, 57 kDa; observed, 68 kDa

Clonality: Rabbit monoclonal antibody

Clone ID: 24GB11585

Species Reactivity: Human

Applications Tested: Western blotting (WB), immunocytochemistry (IC), flow cytometry (FCM)

Immunogen

A synthesized peptide derived from human Alkaline phosphatase

Isotype

Rabbit IgG

Storage Buffer

Supplied in PBS (pH 7.4) containing 50% glycerol, and 0.02% sodium azide.

Storage

Store at -20 °C for one year.

Recommended Dilutions

Western Blotting (WB): 1:500-1:2,500

Immunocytochemistry (IC): 1:100-1:1,000

Flow Cytometry (FCM): 1:2,000

Note: This product is for research use only.

SUPPORT

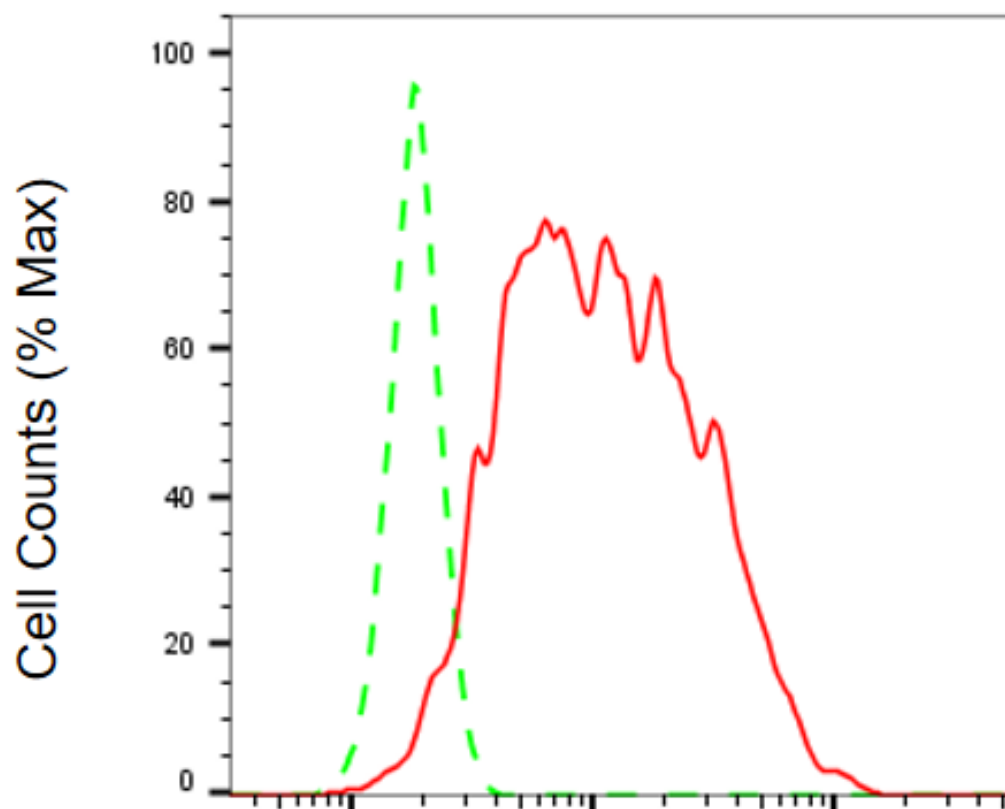
SUPPORT@GENUINBIOTECH.COM
TEL: +1-540-855-7041

ORDERS

SALES@GENUINBIOTECH.COM
FAX: +1-540-855-7041

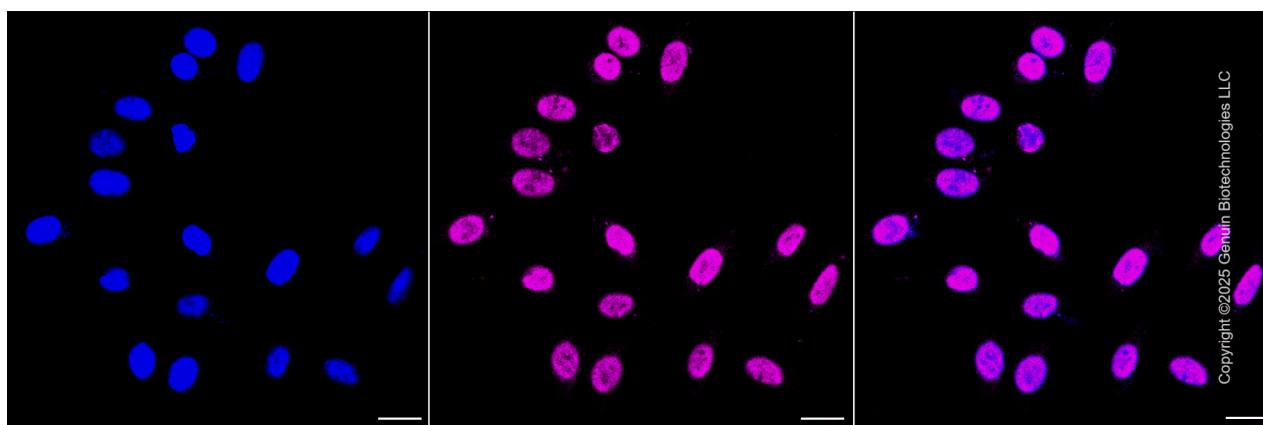
WWW.GENUINBIOTECH.COM

Validation Data



Alkaline phosphatase-Alexa Fluor® 647

Flow cytometric analysis of Alkaline phosphatase expression in HepG2 cells using anti-Alkaline phosphatase antibody (Cat#4511, 1:2,000). Green, isotype control; red, Alkaline phosphatase.



SUPPORT

SUPPORT@GENUINBIOTECH.COM
TEL: +1-540-855-7041

ORDERS

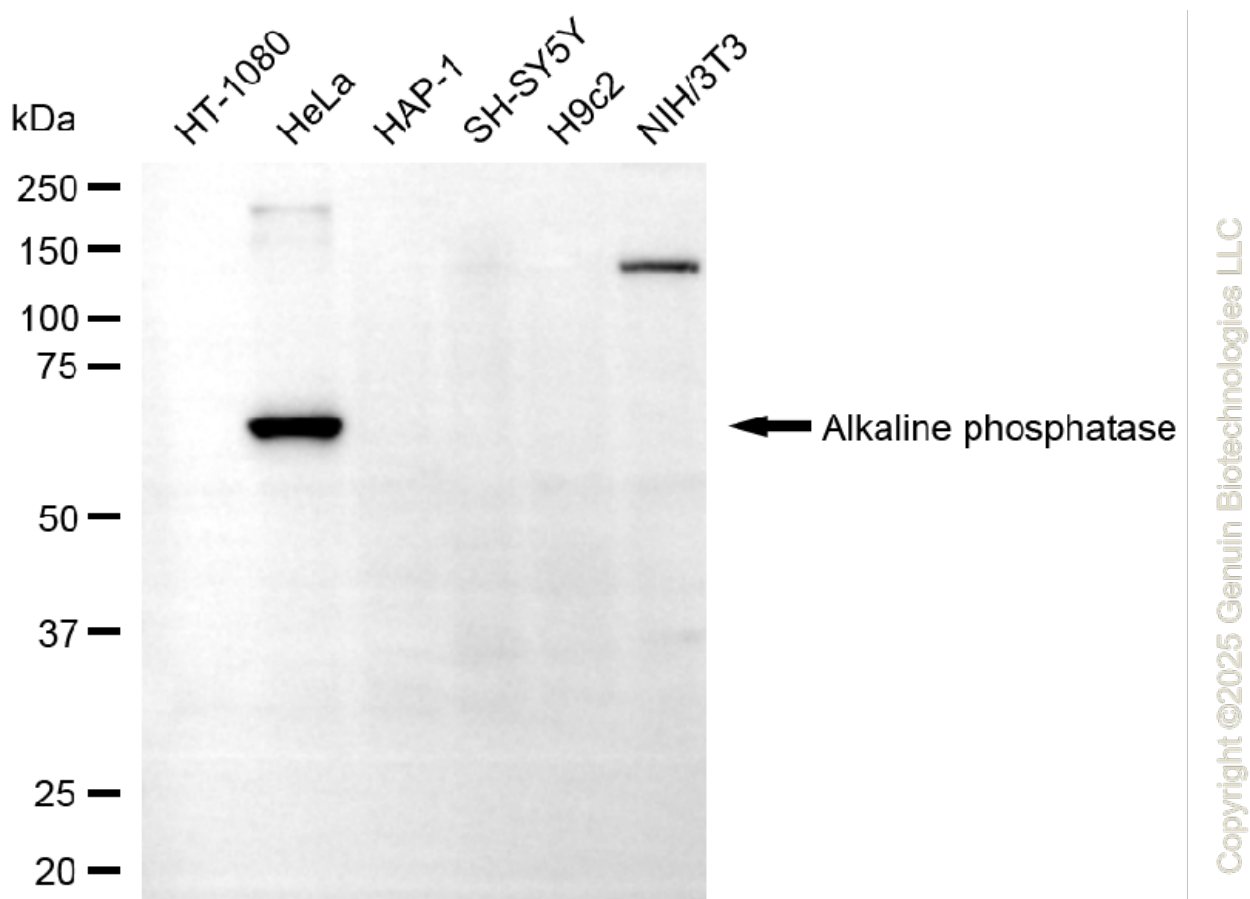
SALES@GENUINBIOTECH.COM
FAX: +1-540-855-7041

WWW.GENUINBIOTECH.COM

Anti-Alkaline phosphatase Recombinant Rabbit Monoclonal Antibody

PAGE 3

Immunocytochemical staining of HepG2 cells with anti-Alkaline phosphatase antibody (Cat#4511, 1:1,000). Nuclei were stained blue with DAPI; Alkaline phosphatase was stained magenta with Alexa Fluor® 647. Images were taken using Leica stellaris 5. Protein abundance based on laser Intensity and smart gain: Medium. Scale bar, 20 µm.



Western blotting analysis using anti-alkaline phosphatase antibody (Cat#4511). Total cell lysates (30 µg) from various cell lines were loaded and separated by SDS-PAGE. The blot was incubated with anti-alkaline phosphatase antibody (Cat#4511, 1:2,500) and HRP-conjugated goat anti-rabbit secondary antibody (Cat#201, 1:20,000) respectively. Image was developed using NaQ™ ECL Substrate Kit (Cat#716).

SUPPORT

SUPPORT@GENUINBIOTECH.COM
TEL: +1-540-855-7041

ORDERS

SALES@GENUINBIOTECH.COM
FAX: +1-540-855-7041

WWW.GENUINBIOTECH.COM